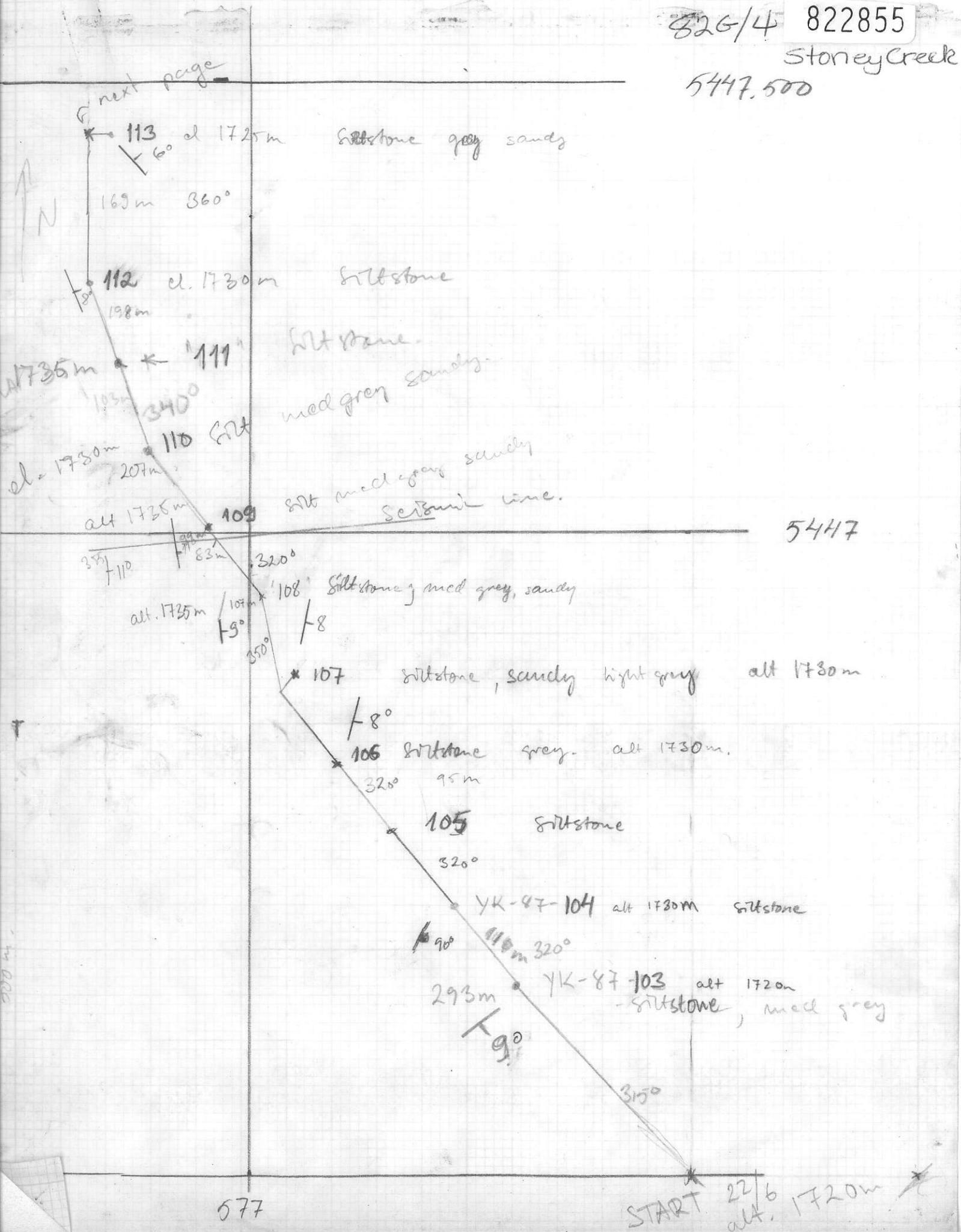
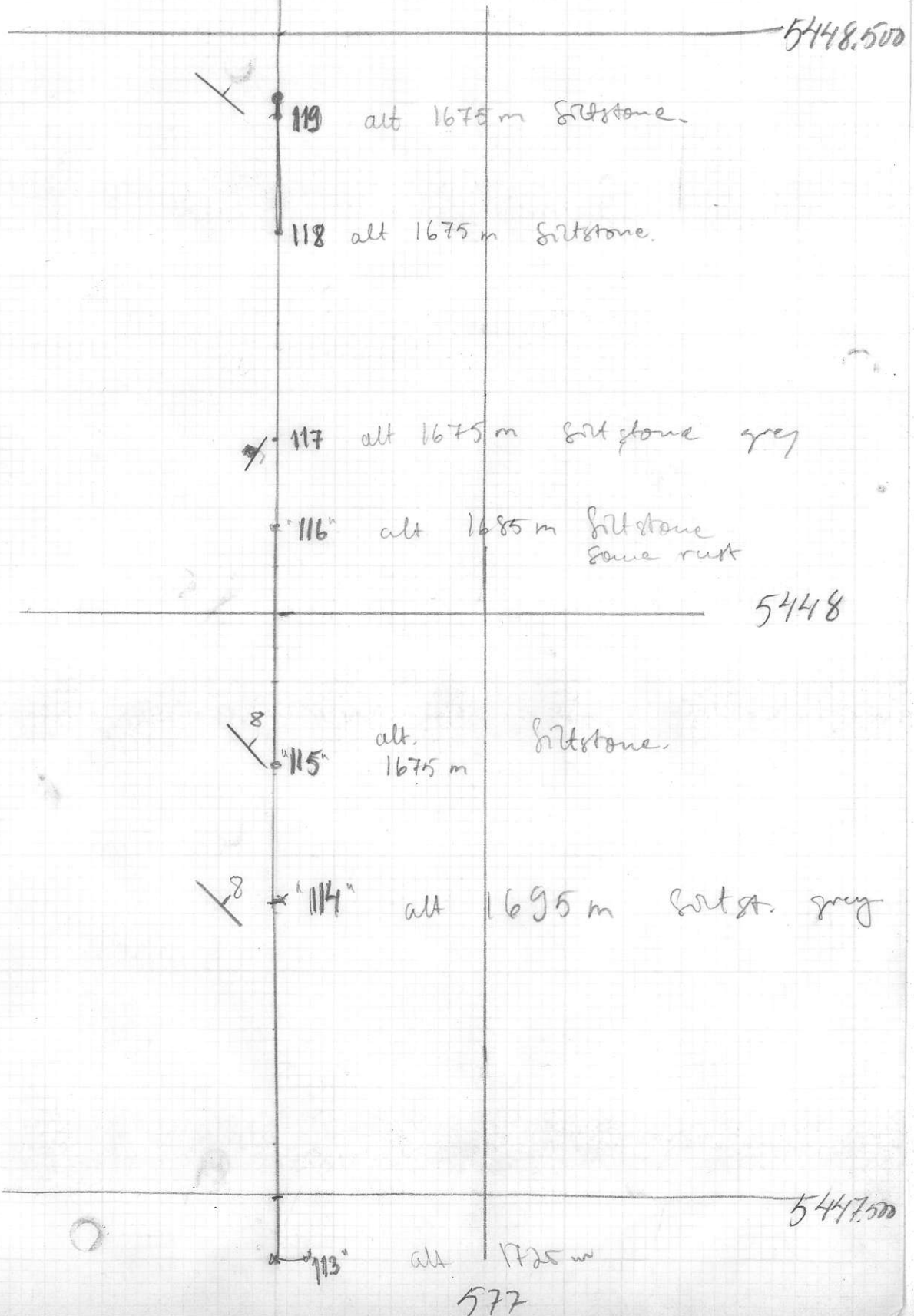
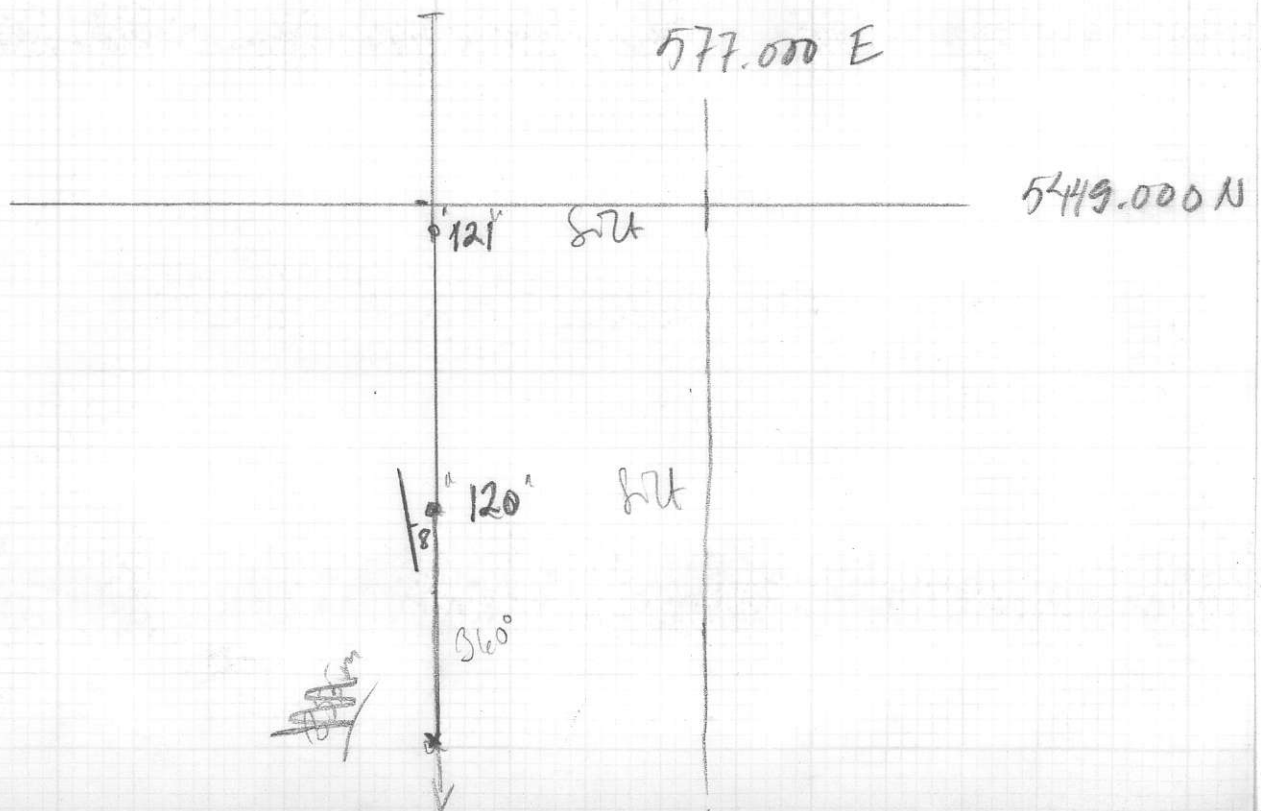


next page

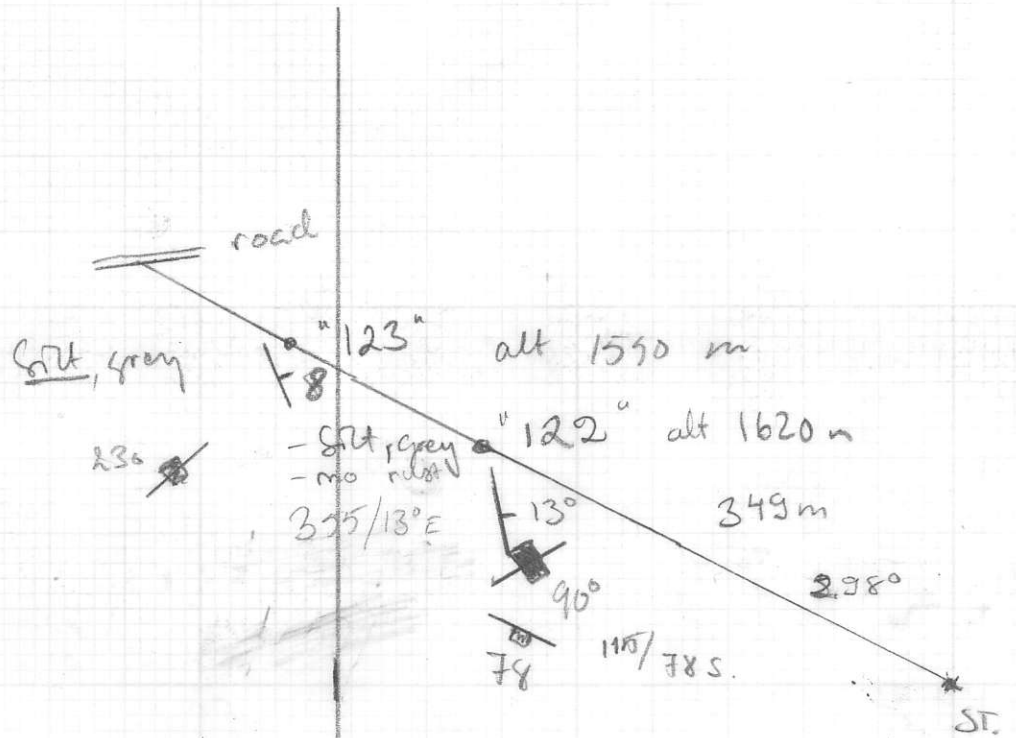


next page





23/6



576 910

5446 770

5446 500 N

576 500 E

1180m 6° 1670m

claim line

Steep

YK-87-134 alt 1680m

-gabbro  
fine grained, dark grey

5143,000N

Claim line

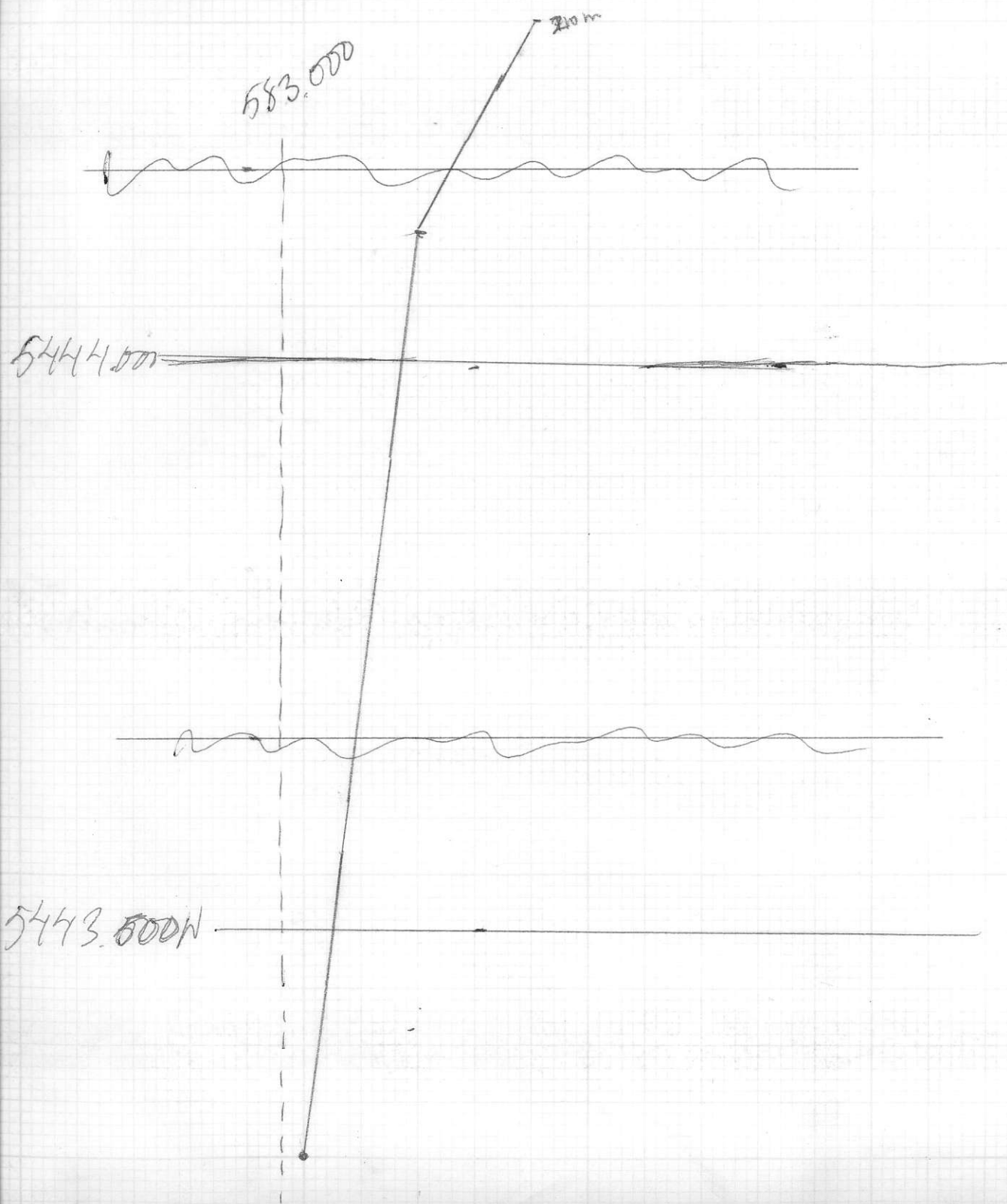
610m alt. 1650m

6°

ST

alt 1595m

583,000E



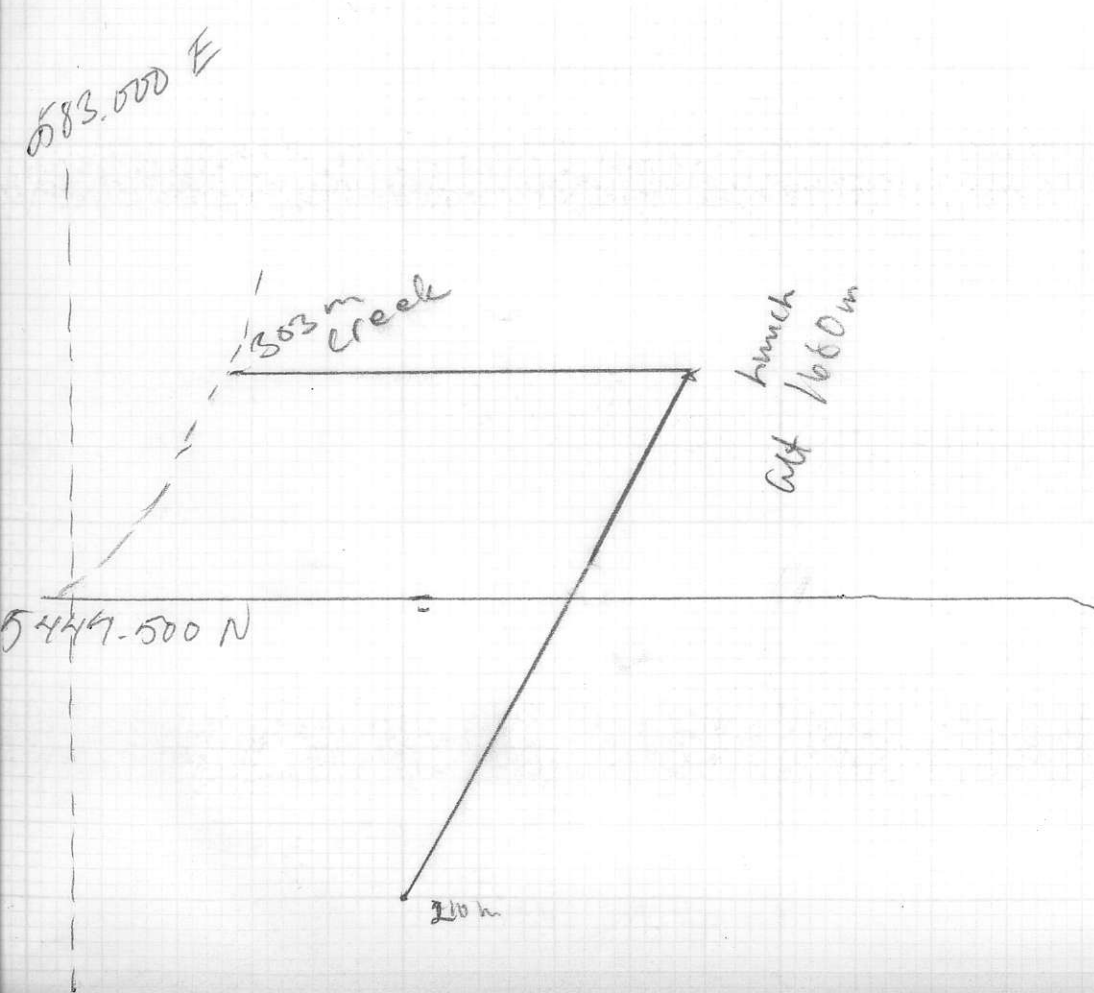
583.000 E

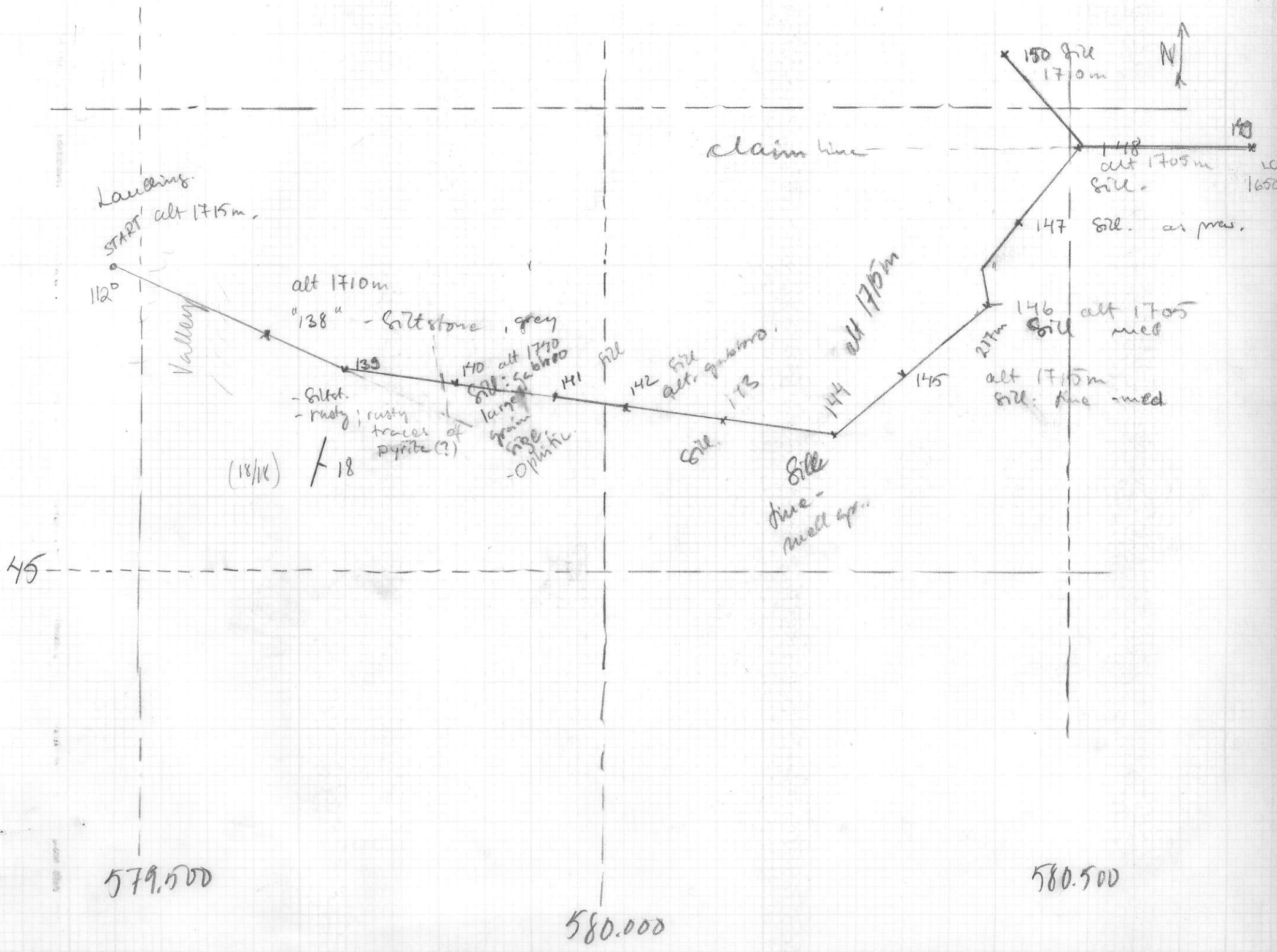
503 m creek

branch  
alt 1660 m

5449.500 N

200 m









45.500

580.000

151  
alt 1420  
sell q.b.  
res

alt 1410

150.

No Coordinates

(29/6)

27/6

~~YK 87-157~~

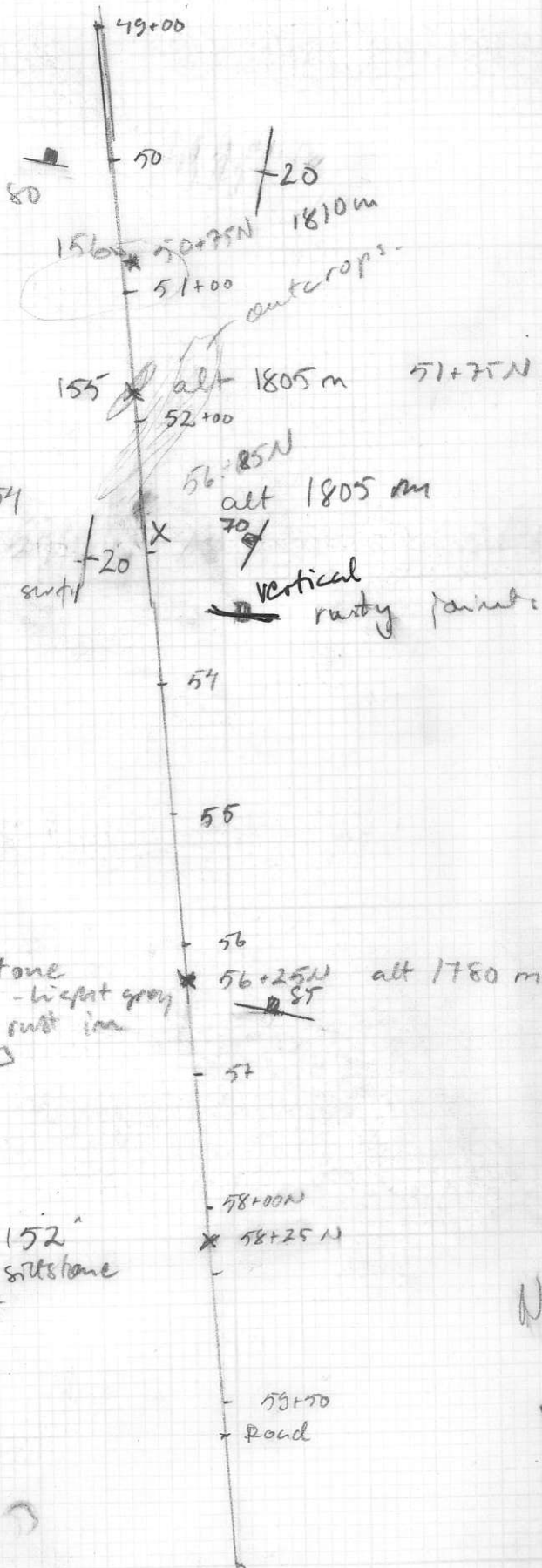
YK-87-156  
 - siltstone gray  
 - same rust

YK-87-155  
 - muddy siltstone  
 - med-dark grey  
 - rusty

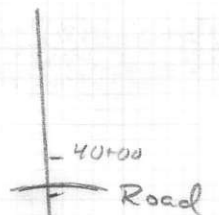
YK-87-154  
 - siltstone  
 - ds. gray  
 - rust on surf

153  
 - siltstone  
 - grey - light grey  
 - light rust in joints

"152"  
 - siltstone



27/6



VK-87-160 42+50N

- siltst. med grey
- a little muddy
- some rust.

160x 42+50N alt 1750m

VK-87-159

- siltstone, as prev., rusty and weathered
- the rock has suffered movement and alter. weather.

159 44+00N

VK-87-158

- siltstone grey, with muddy interbeds
- rust on surface.

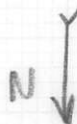
158 45+05N alt 1775m

VK-87-157

- siltstone, some rust (not much)

157 46+00N alt 1775m

- Bent degree  
5m wide same as  
fills, med. grained.



49+00N

578.500 E

A

\* Road  
59+00

075 E

\* = 1 5447230 N

52+00

152  
- 822.5  
- grey

\* 58+25 N alt 1775  
58+00

5447 000 N

153

\* 56+25 1780m

154 \* 1805 m 52+85

5446 500

155 1805 51+75

156 \* 50+75 N 1810m

50+00

48+00

5446 000

\* 47+00 N

5446

BSL 100 E

775000

47+00

Slt

x 46+00

"157"

1775 m

Slt

x "158"

Slt

x "155"

5445.500

Slt

"160"

x x

42+50

1750 m

42+00

Road

40+00

galtbr.

x "182"

alt 1720 m

galtbr.

x 38+00 "183"

1720 m

5445 000

galtbr.

x 184

1720 m

36+00

Slt

x 185

1725 m

35+00

579.000

35+00

186 alt

34+00

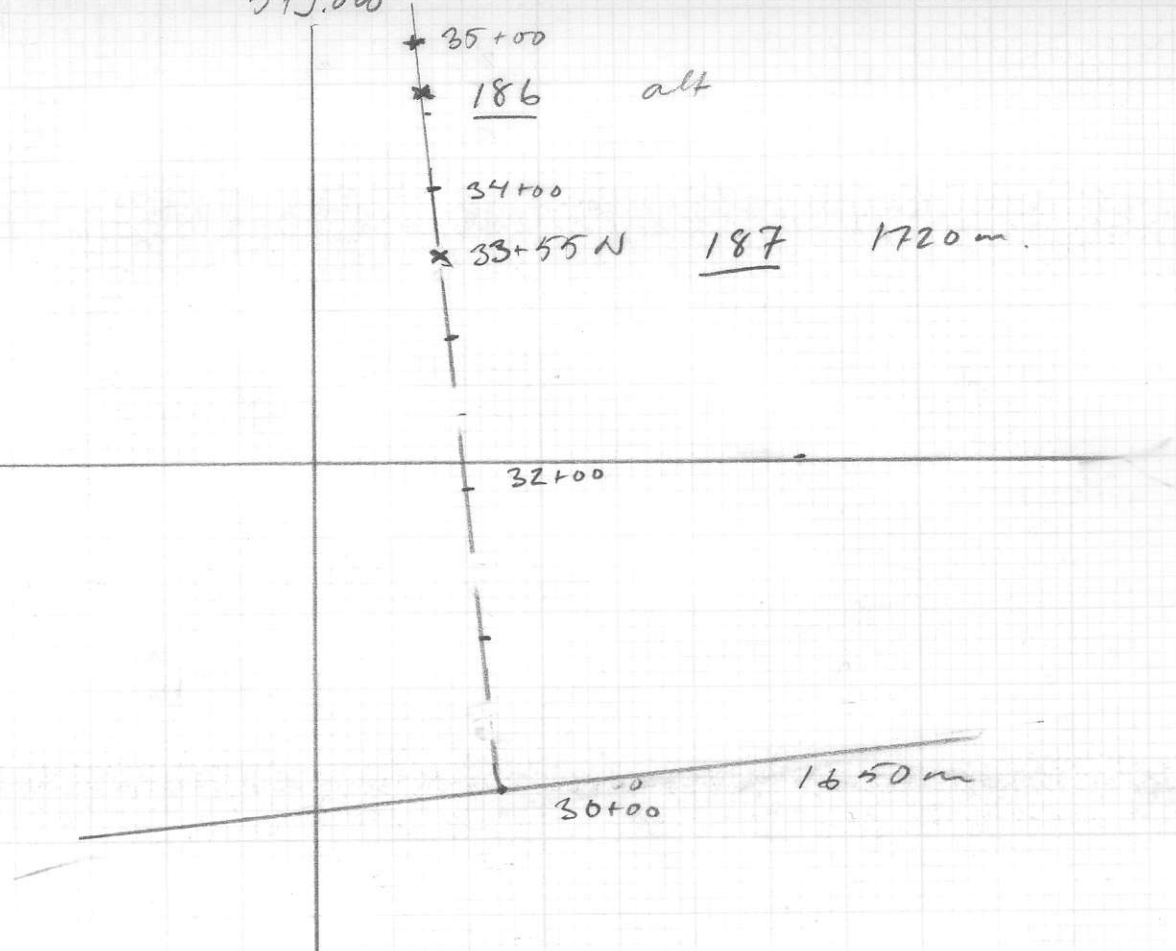
33+55 N 187 1720 m.

5444500.

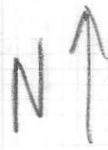
32+00

30+00

1650 m

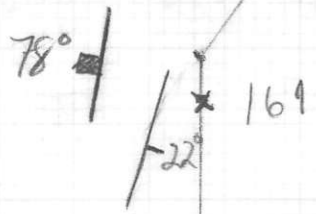


579



5445

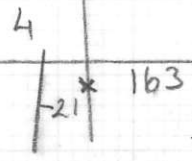
ST-2 27/6 alt. 1735 ?



alt. 1770m  
 - siltstone grey, rusty in places.  
 - sole marks on boulders.

162

- alt 1760m  
 - siltstone; as prev.



alt 1760m  
 - siltstone as prev.  
 - rusty in places.  
 - quite normally interbeds.

28/6

579.500



5451.000

320  
83

23

alt 1190 m - siltstone  
- sandy siliceous  
- some rust in joints

14

- alt 1190 m  
- siltstone as prev.  
- light grey - med gra  
- micas (seric.)  
- a little muddy

No outcrop

237/7 7

siltstone as previous  
light grey.

8

169 alt 1295 m

YK-87-168  
- siltstone  
- light grey  
- siliceous

169 m alt 1290  
sandy  
some rust.

5450.500

168  
alt 1260m / 399 m

Steepest slope  
bottom of valley

No outcrop  
alt 1294 m

YK-87-167 alt 1340 m  
- siltstone  
- light grey  
- rusty (a little)

6°

Road

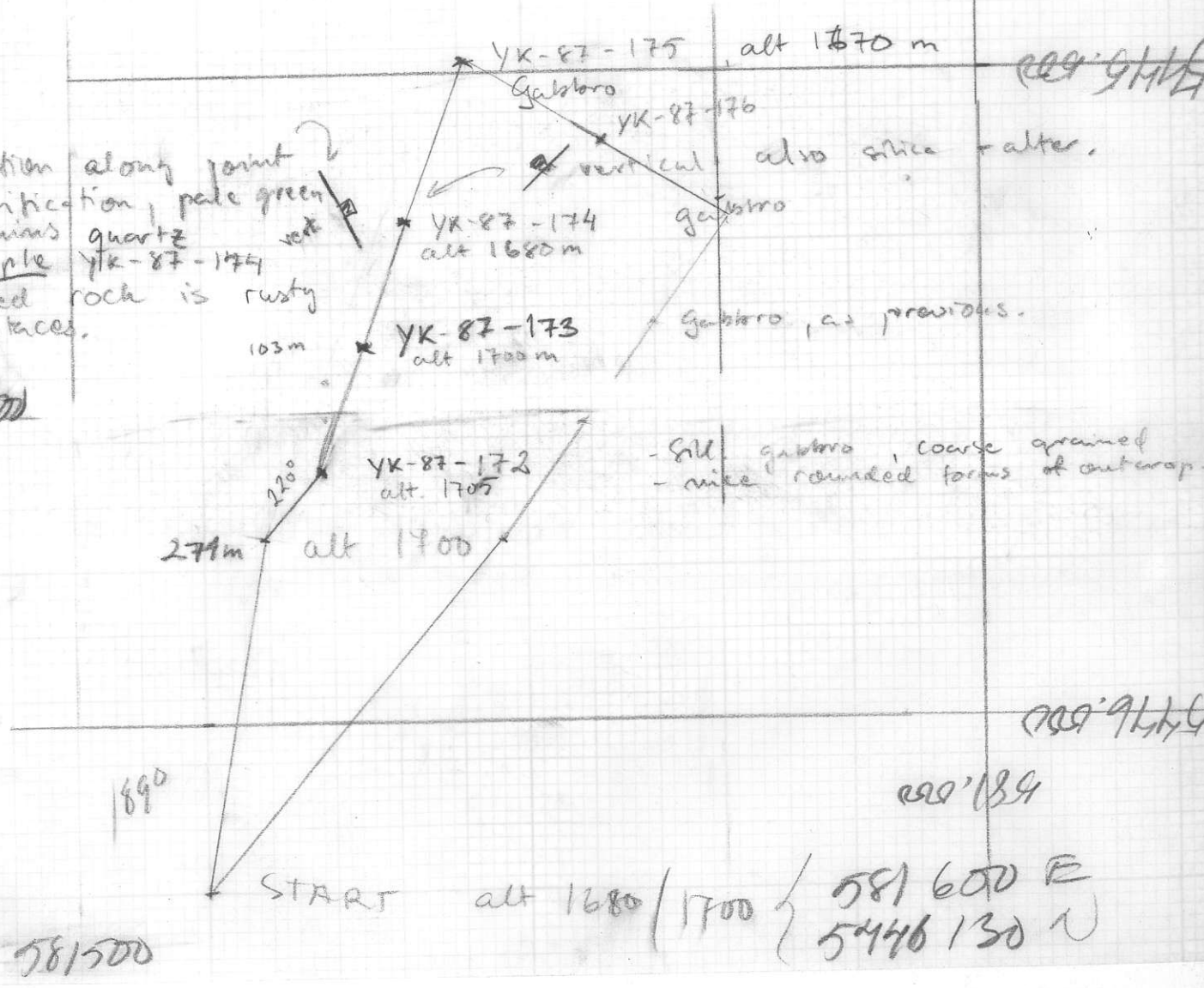
167  
START TRAVERSE  
28/6 alt 1340 m



29/6

- alteration along joint
- silicification, pale green contains quartz
- altered rock is rusty in places.

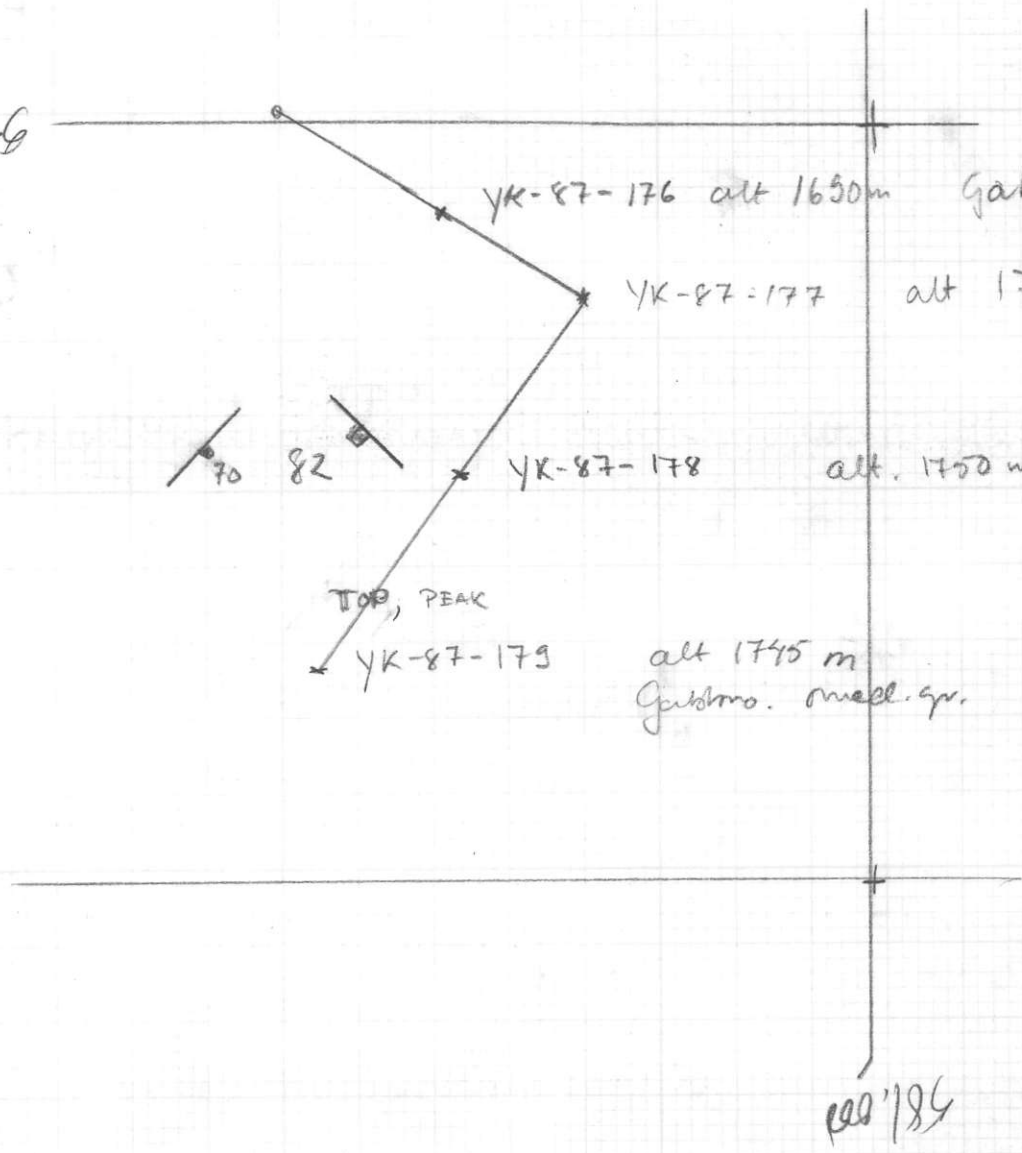
5446.500





at YK-177 <sup>very</sup> bleb at coarse material in med. grained sill. Plg + pyrox. 15cm across.

0005/6/7/8



YK-87-176 alt 1650m Gabbro coarse

YK-87-177 alt 1730m Gabbro med. grain

YK-87-178 alt. 1750m

TOP, PEAK  
YK-87-179 alt 1745m Gabbro. med. gr.

Gabbro, med. grained.  
- lots of green alt. blebs.  
Obs! Boulders of sedimentary rocks!



N  
↑

578.000 E

578.500

ST

578700 E

5445 460 N

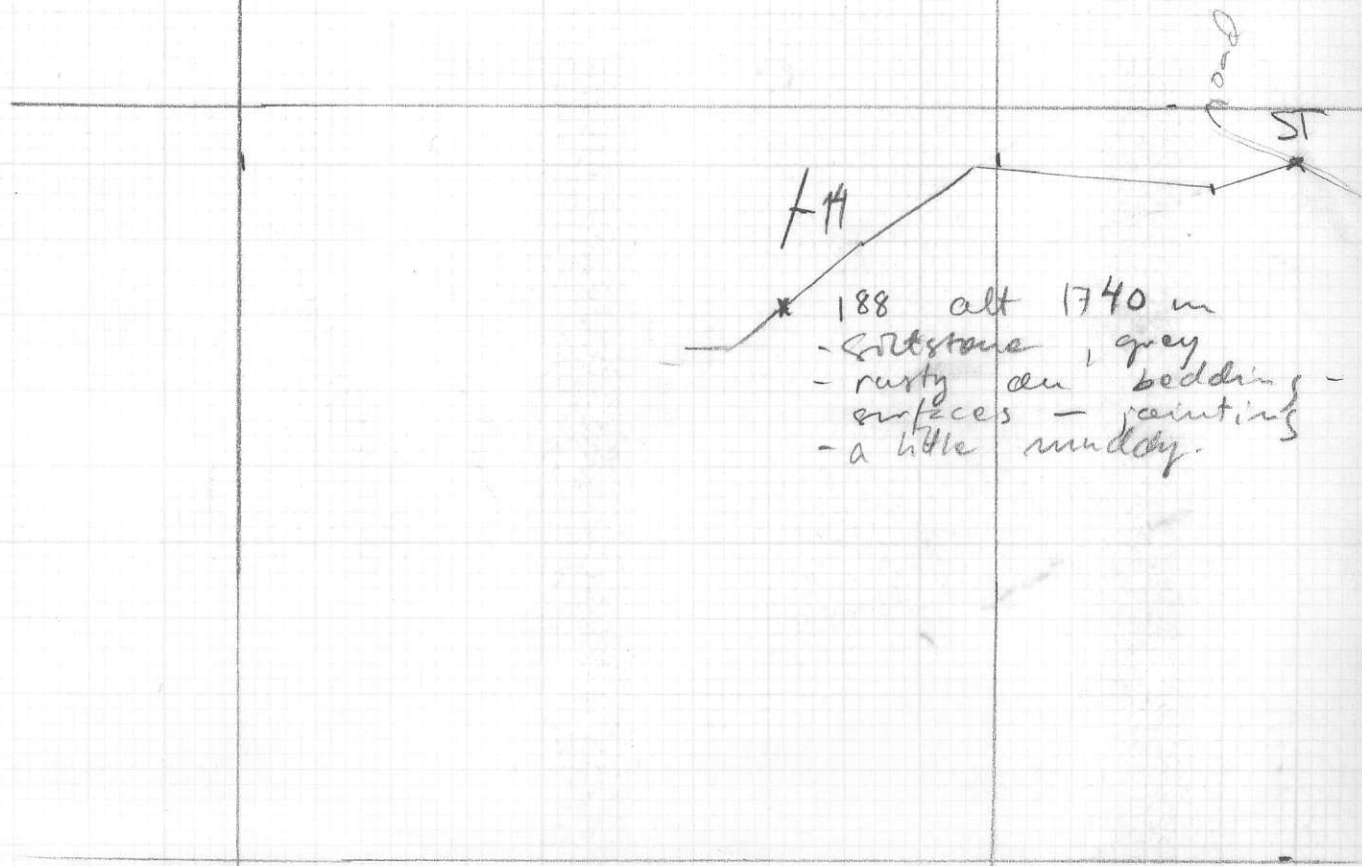
5445 500 N

FH

188 alt 1740 m

- Siltstone, grey
- rusty au bedding surfaces - painting
- a little muddy.

5445.000 N



575 500

576 000

5441.500 N

1470

345

80°

- silicee filled cracks

194

- siltstone  
- grey  
- silicee rich

alt 1760 m (? thunder)

alt 1755 m

YK-195

- siltstone  
- as prev;  
- Si-rich (sandy)

16°

- alt 1760 m  
- some rust on bedding surfaces.

YK-87-196

alt 1720

- siltstone as 195  
- rusty on bedding surface

26

YK-87-197

alt 1700

- siltstone, as prev.

5441.000

360

10  
vert. 286

336

10

5440.500

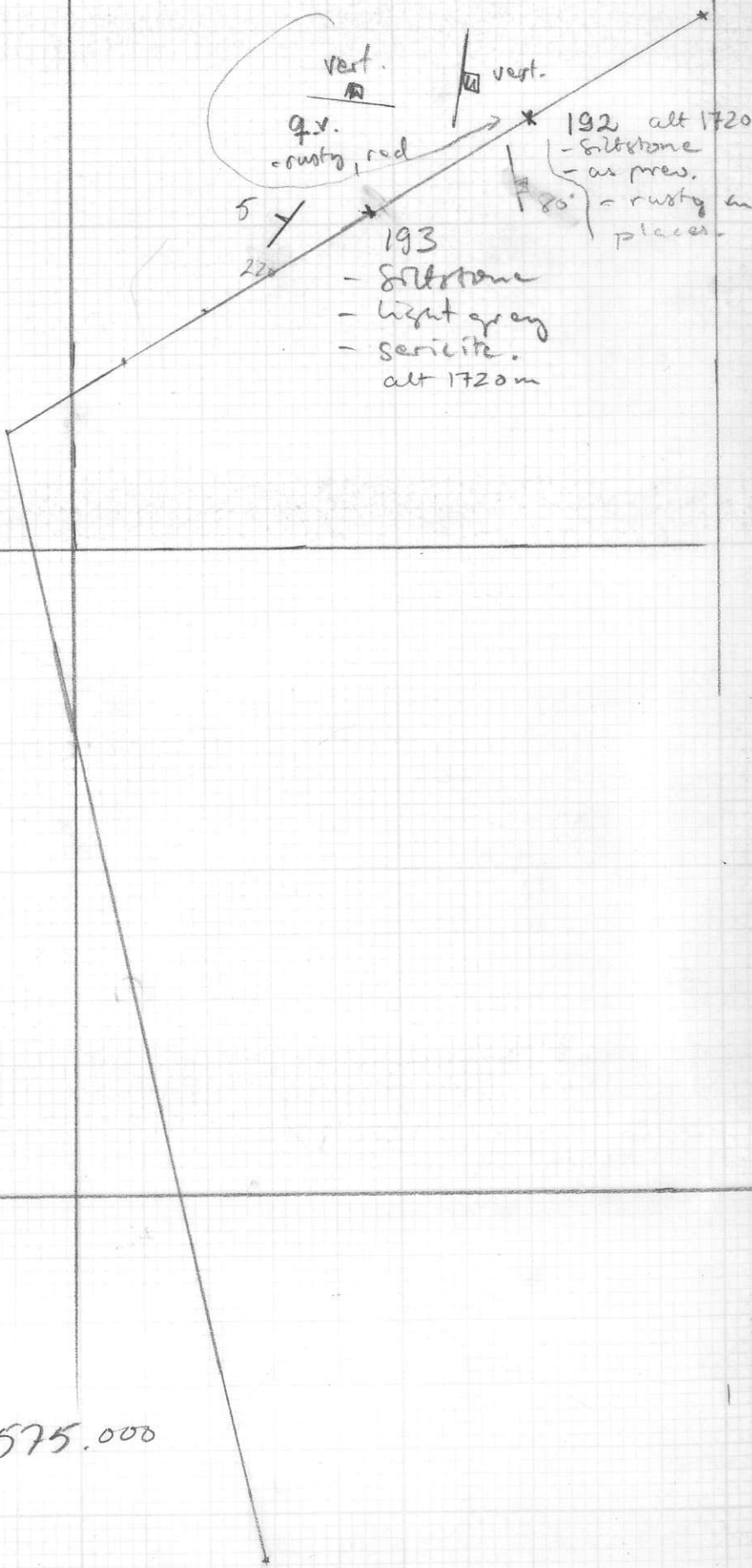
575.000

5443

5442.500

5442.000

575.000



vert.  
A

q.v.  
crusty, red

5  
22

vert.

192 alt 1720  
- siltstone  
- as prev.  
- rusty in places

193  
- siltstone  
- light gray  
- sericite.  
alt 1720m

576 000

ST / 576 500  
2/7 } 5443 800

260° ST

EOL  
alt 1680

5443 500

5443 500

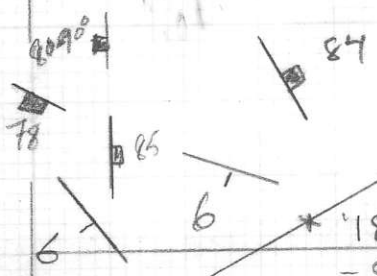
575 500

2150

claim post stone 14, 15

2400

5443 000



YK-87-

\* '189' alt 1700m

- siltstone, grey - light grey
- cont. a little mica

190 alt 1700 m

- siltstone as prev.
- some rust bedding surfaces
- muddy.

191

alt 1715 m

siltstone, as prev, but higher SiO<sub>2</sub>, lower mud.

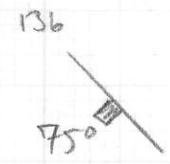
575.500 E

576 000 E

3/7

580

580.500



579 500 } ST  
544 250 }

75° - vert. - rusty

324  
vert.

347  
21°  
108+15E

544500

102+10E

30  
(siltstone)

107+00E

82°  
100+00

YK-87-198  
- alt 1675 m  
- sill: gabbro  
- coarse grained

YK-87-199 alt 1600 m  
- siltstone, light grey  
- sil. rich, sandy.  
- some rust  
- jointed

YK-87-200 alt 1625 m  
- siltstone, as previous.  
- muddy layer ~ 10 cm thick  
- some rust

4/7 P 1.



49 000

100 m

90°

alt 1570 m

1078 m

ST { 581 920 E  
5448 270 N

48 500

136

890

YK-ST-202  
alt 1635 m

170

10

301°

- siltstone
- light grey
- sandy, "massive"

swampy field  
ST

alt 1635 m

581 000

581,500



4/2 p2

↑ N

50 000

280

no outcrop  
alder bush

325

7

VK-87-203 alt 1570m  
- silty light grey - as prev.  
- some rust.

49 500

581 500

582 000

4/7 p 3

PN

51 000

50 500

581 500

582

582, 500

282' 12

80 318 10

293 6

320 355 12

\* YK-87-208 alt 1500m  
 - siltstone, light grey  
 - sandy

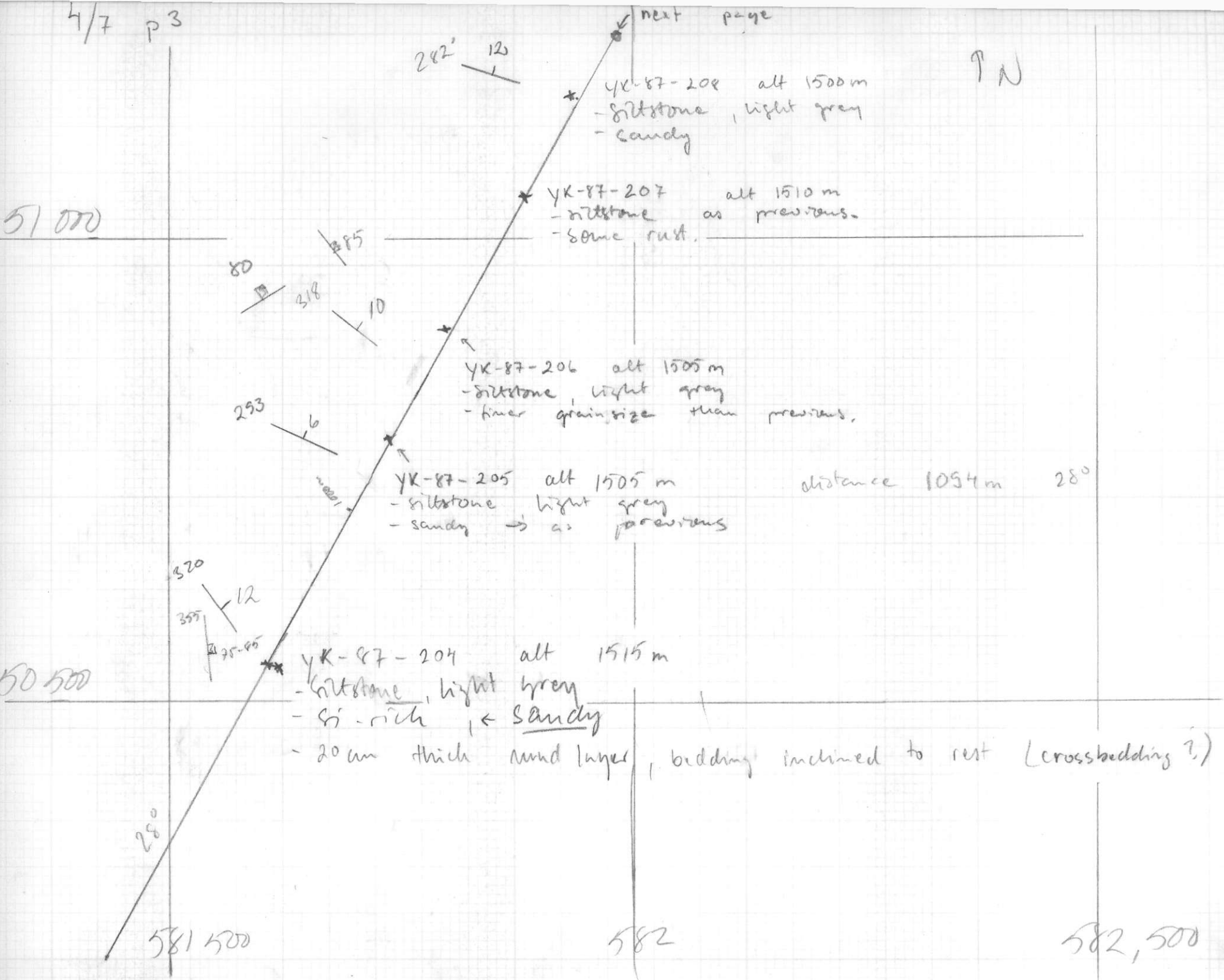
\* YK-87-207 alt 1510m  
 - siltstone as previous.  
 - some rust.

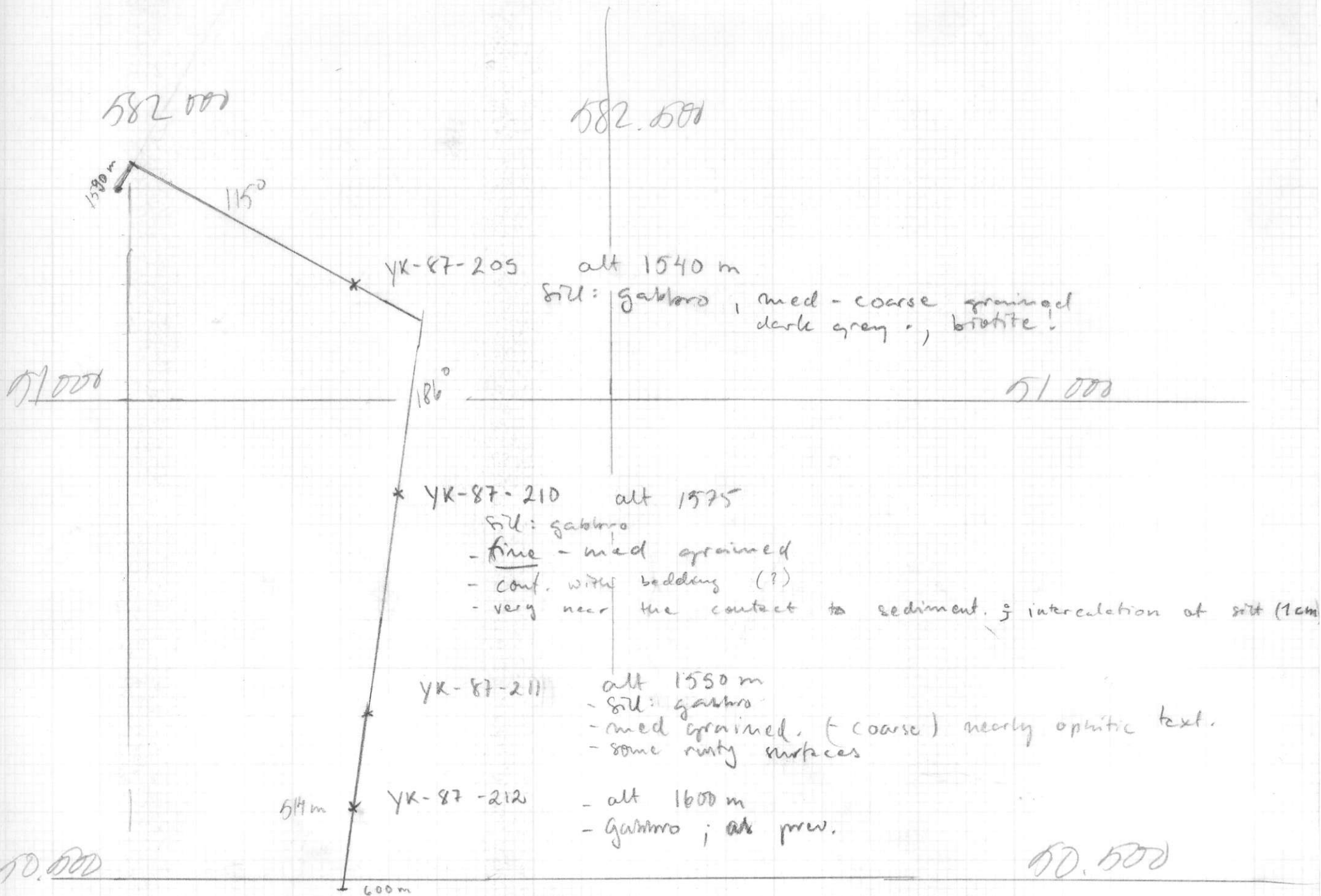
\* YK-87-206 alt 1505m  
 - siltstone, light grey  
 - finer grain size than previous.

\* YK-87-205 alt 1505m  
 - siltstone light grey  
 - sandy → as previous

\* YK-87-204 alt 1515m  
 - siltstone, light grey  
 - Si-rich ← sandy  
 - 20 cm thick mud layer, bedding inclined to rest (crossbedding?)

distance 1054m 28°





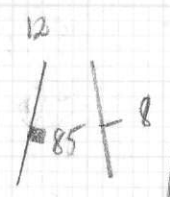
H<sup>2</sup>  
p5

582.000

600 m

186°

582.000



x

YK-87 - 213

alt 1600 m

- Siltstone
- light grey
- light rust in places.

50.000

49.000

582.000

582.500

5/7 1987 p1.



306 16°

102°

\* YK-87-218 alt 1630 m - siltstone grey - some rust

5449500

327 8°

\* YK-87-217 alt 1640 m - siltstone muddy (argillaceous) - thin beds, sometimes pure mudstone.

60° 180°

308°

40°

68°

\* YK-87-216 alt 1650 m - siltstone as prev. - a little lighter in colour - muddy crossbedded into layers - rusty in places.

72°

353°

\* YK-87-215 alt 1640 m - siltstone as prev. - muddy, into beds (thin < 1cm)

80°

5449000

6°

87° 78° 110°

\* YK-87-214 alt 1630 m - siltstone grey - some rust.

140

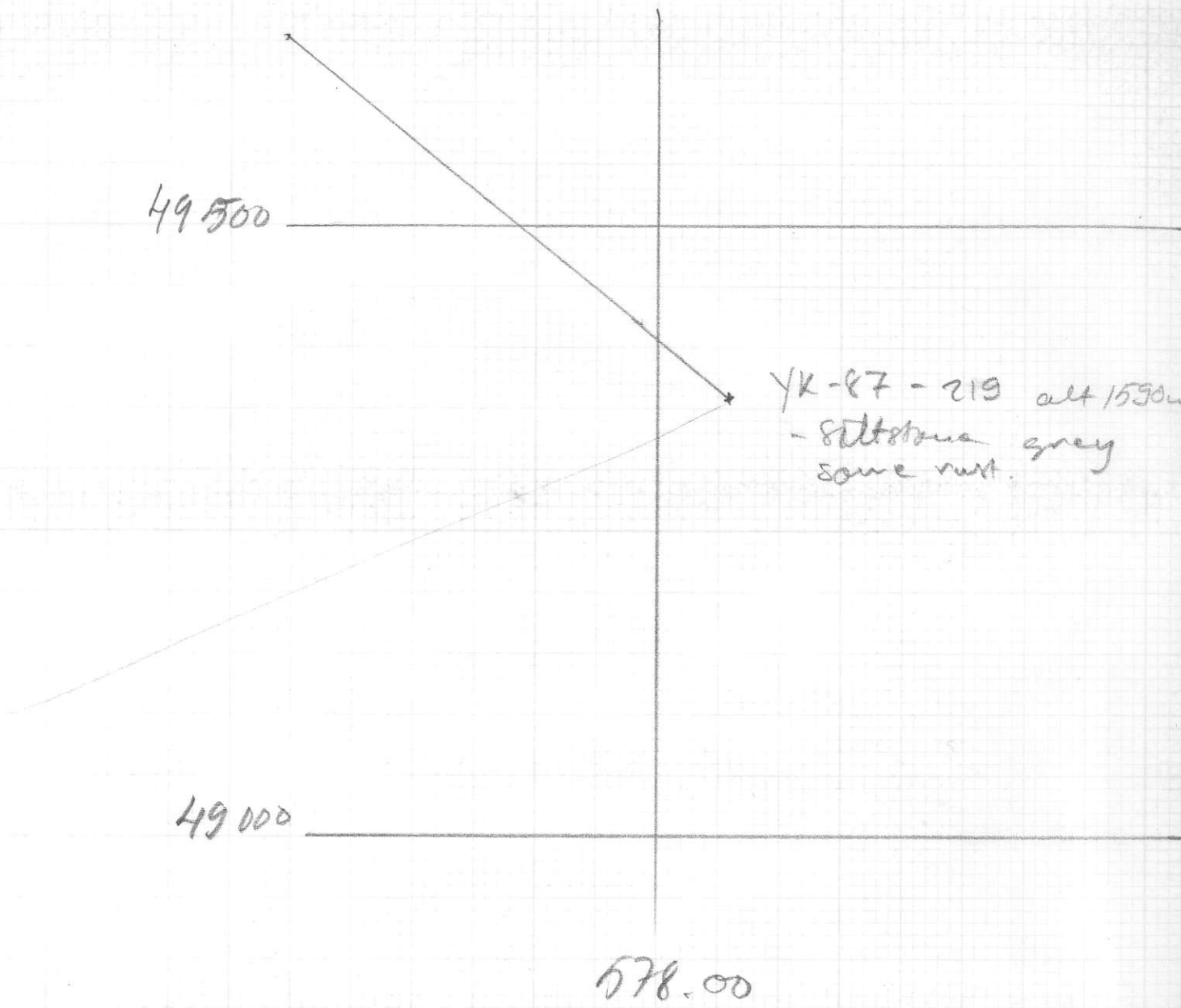
START. 5/7

ST { 577 400 E  
5748 500 N

577 500

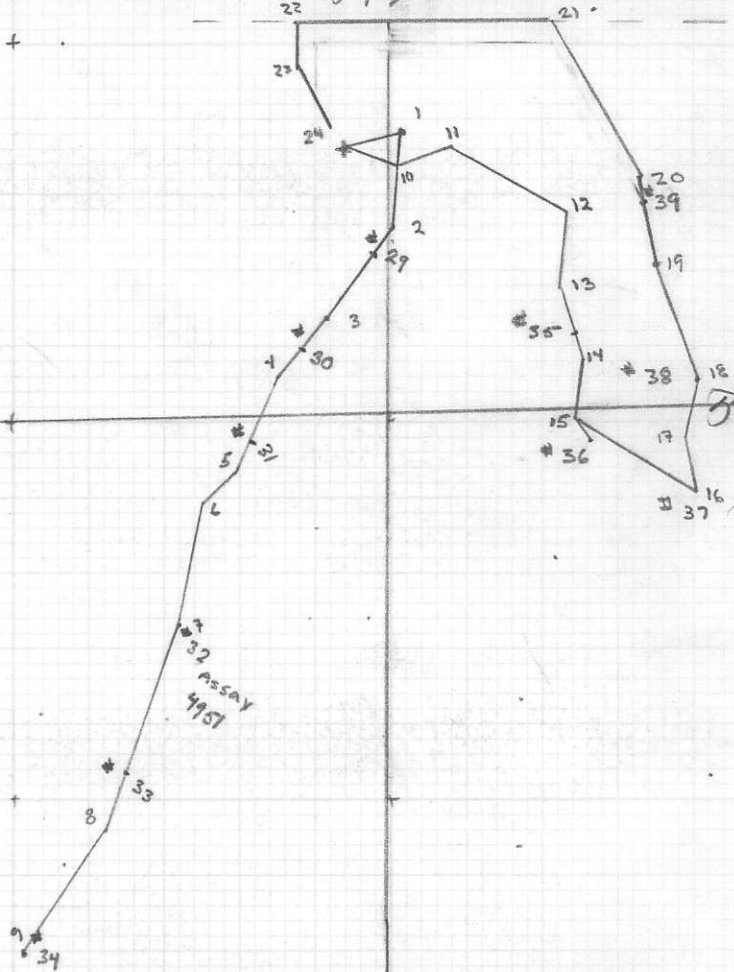
578 500

5/7 p2



578.500

579.000



577.500

496.500