



## Regional Geology

The property covers ground in the second structural block of Proterozoic age Aldridge sediments and intrusives. The stratigraphy forms a syncline and the Lower Middle Aldridge contact is exposed on the east limb and can be traced for 10 km. northeast to the Vine prospect.

## Property Geology

The bedded rocks generally strike NNW and dip 10-20 degrees NE. The Lower Middle Aldridge contact is interpreted to be present across the property at depths up to 1500 meters. Gabbros occur as both dikes and sills and BRL maps show numerous faults displacing stratigraphy up to 1000 meters without much evidence. BRL themselves report that Middle Aldridge markers are rarely present on the property (Pg 14, 1990 report).

## Targets

### Veins

A series of quartz sulphide veins exist in the hanging wall of a gabbro sill on the west limb of the McNeil syncline. The veins are lead rich and true widths average 1.2 meters. Lead isotope analyses indicate the veins do not plot at Sullivan time but are Middle Aldridge in age. The orientation, age and grades of the veins are similar to the Vine and St. Eugene systems. The veins do not appear to have the potential to develop significant tons.

### Gold

The 1990 program unsuccessfully attempted to evaluate gold mineralization reported on the western margin of the property. Only two samples of the 850 soils collected returned values greater than 50 ppb (a 63 and 108 ppb). No gold potential exists on the property.

### Massive Sulphides

Hole 89-3 intersected 1.75% Zn over .4 meters at a depth of 182 meters and 89-7 hit .5% Zn over .3 meters at the same depth. 89-7 was collared 150 meters north of 89-3.

These intercepts occur with what the logs describe as "banded sulphides". Follow up holes drilled 500 meters north, east, southeast, and south failed to intersect significant base metals. BRL interprets these zones to lie in Middle Aldridge stratigraphy.

Hole 89-8 located 130 meters southeast of 89-3 encountered Lower Aldridge at a depth of 1000 meters. Trace amounts of sphalerite occur in heavy pyrrhotite beds over a 16 meter interval at the contact.

More work could be done to follow up these zones. (Downhole PEM and a few more holes)

### Program Review

#### 1988

30 line km., Max-min, VLF, 29 trenches  
drilling: 8 holes 2677m

Pb soil anomaly 1.4km X .4 km.  
Narrow qtz-sulph veins  
Best intercept .5m of 16.5% Pb, .38% Zn.

#### 1989

19 line km. on N end of /88 grid UTEM, Mag, HLEM  
drilling: 21 holes 5621 meters

UTEM 1 shallow weak conductor on SE part of grid.  
89-3 hit 1.74% Zn over .4 meters at 180 meters  
89-7 hit .5% Zn over .3 meters at 184 meters  
89-8 hit 25 meters of anomalous Zn at LMC (957 meters)

#### 1990

7.5 line km. grid, 863 soils, 1 line IP  
Target: Au in shear

2 samples > 50 ppb (a 63 and a 108 ppb)

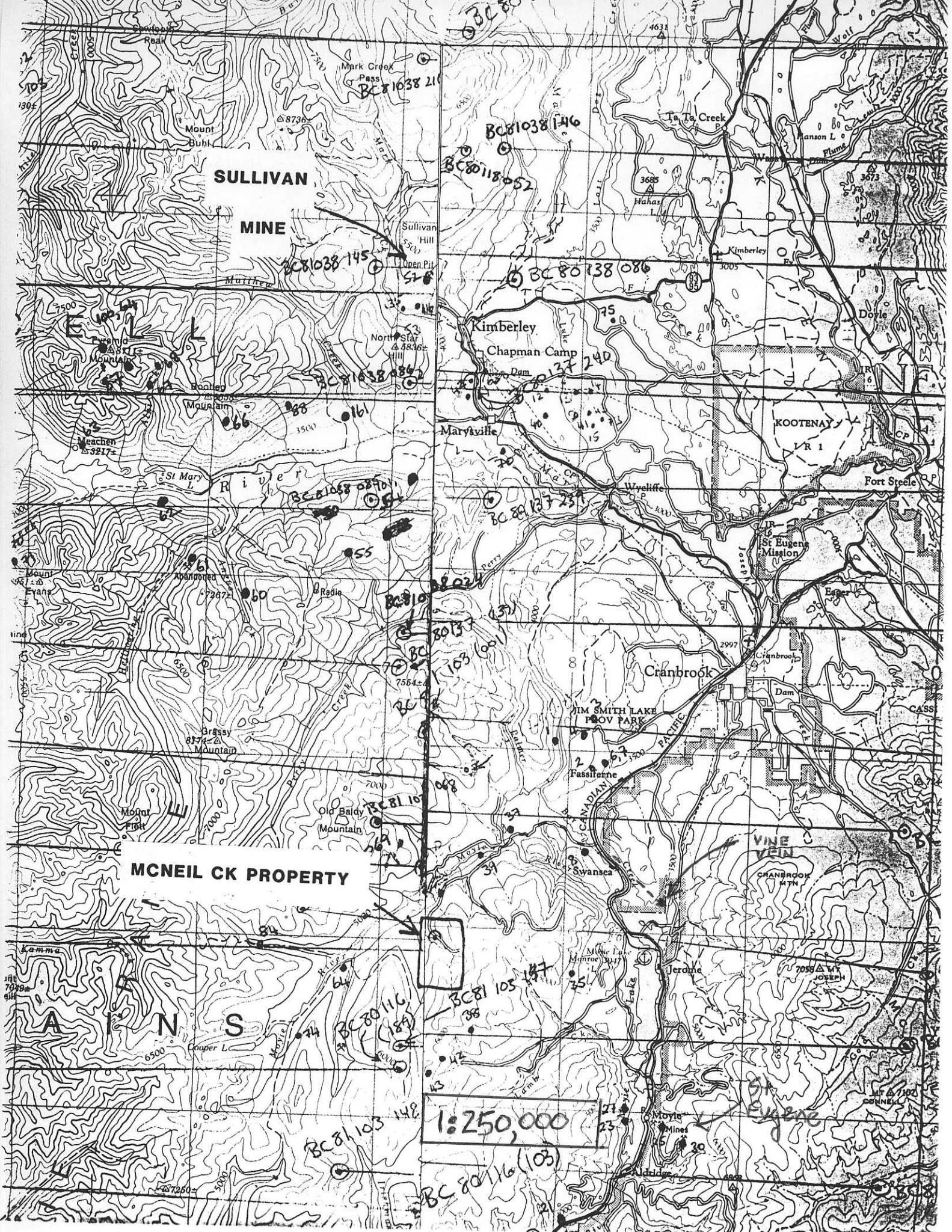
### Conclusions and Recommendations

It appears the McNeil property shows some promise for hosting a large tonnage massive sulphide deposit. Next spring we should examine the sulphide intercepts in order to judge their significance.

**SULLIVAN  
MINE**

**MCNEIL CK PROPERTY**

**1:250,000**





120m NSV 89-13  
 below 80 gabbro  
 gabbro below 45m  
 89-11,12  
 89m 153m Gabbro below 38m  
 89-2 ALL  
 GABBRO  
 305m

89-7  
 0-100 gabbro  
 276m  
 at 183 .50% Zn/3m  
 in Py/Po rich zone  
 below 99 gabbro  
 89-4,5  
 111.5  
 165m  
 below 153 gabbro

89-3 400m  
 1.75% Zn/.4m at 190m  
 320 Ft.  
 0-59 gabbro  
 89-8  
 1080m  
 DIKES  
 OUT?

160-185 LAMP  
 DIKE + Gabbro

89-19 323-  
 890m  
 Zn vnlts at  
 140 & 160

15°

89-6  
 256m  
 112m 982ppm Zn/.1m

263m  
 NSV 89-2  
 50  
 0-96 gabbro  
 130-263 gabbro



MCNEIL  
 1:5000

MC NEIL CK

5000'