

822700

REPORT ON
ST. EUGENE MINING CORP. LTD. (N.P.L.) PROPERTY

MOYEE, B.C. FORT STEELE, M.D.

Lat. 49° 17' N Long. 115° 50' W

Elevation 31-0-5200'

N.T.S. 82-G-5

Vancouver, B.C.

D.H. Brown

November 20, 1974

J.J. McDougall

REPORT ON

ST. EUGENE MINING CORPORATION LIMITED (N.P.L.) PROPERTY

MOYIE, BRITISH COLUMBIA

Latitude : $49^{\circ}17'N$

Longitude: $115^{\circ}50'W$

Elevation: 3100 to 5200'

N.T.S. 82-G-5

Mining Division : Fort Steele

Vancouver, B.C.
November 20, 1974

D. H. Brown
J. J. McDougall

TABLE OF CONTENTS

	<u>Page</u>
Foreword	
LOCATION	1
PROPERTY	1
SURFACE RIGHTS	2
HISTORY	4
PRODUCTION	5
DEVELOPMENT	6
1962 JOINT EXPLORATION PROGRAM	7
1965 ST. EUGENE EXPLORATION PROGRAM	8
Geology	9
Stratigraphy	9
Intrusives	9
ORE DEPOSITS - St. Eugene Mine	10
Aurora & Guindon Mine	12
Society Girl Mine	12
REFERENCES	13
ATTACHMENTS	14
 <u>APPENDICES</u>	
L-3039-S1 - Legal Survey	
L-3039-S2 " "	
L-3039-S3 " "	
L-3039-S4 " "	
L-3039-S5 " "	
L-7662-S1 " "	
L-7662-S2 " "	
L-3003-S1 " "	
 <u>MAPS</u>	
Map SE-74-2	Moyie Mining Camp Fort Steele M.D. (In pocket)
Map SE-74-3	Ideal Section A-B " "
Map SE-74-4	Moyie Area - General Geology " "
Map SE-74-5	Geological Map (A. Smith) and Drill Hole Location (In pocket)

MOYIE LAND HOLDINGS

(ST. EUGENE MINING CORPORATION N.P.L.)

Foreword

This report is an attempt to index and describe under one cover, our complicated land and mineral claim holdings involving the St. Eugene Mine at Moyie, B.C.

St. Eugene Mining Corporation N.P.L. was established as the first Ventures Limited company in B.C. with the primary objective being to carry out exploration in and beyond the original St. Eugene workings. This was covered by a long-term agreement with Cominco, owners of the main property. Work in the original mine did not proceed as proposed however, although equipment was purchased for this purpose. Some surface exploration and diamond drilling was done at a later date under an extended agreement.

The company staked additional claims and picked up related crown grants on which some surface rights were obtained. The latter, now having some value because lake frontage is included, is the chief subject of this report.

The present status with respect to the property itself is that Cominco has, by letter following the expiration of our long-term agreement, offered a continuation of the same and 'the ball is in our court'.

Because of the greatly increased costs of required underground mining, the deposit itself is continually decreasing in importance, and we will probably, with rapidly escalating taxes, be faced with land disposition in the not too distant future; this compilation is thus considered timely.

The writer has only an overall appreciation of the project, and more recently (1974) examined the surface holdings as per enclosed photos etc. Dave Brown has dealt with legal descriptions, assessment hearings etc., and is responsible for most enclosures. Alex Smith was involved in the project since shortly after its inception, and only minor updating can be added to his more recent reports, more of which are probably in Toronto's St. Eugene files than in Vancouver.

J.J. McDougall

ST. EUGENE MINING CORPORATION LIMITED (N.P.L.) PROPERTY

MOYIE, BRITISH COLUMBIA

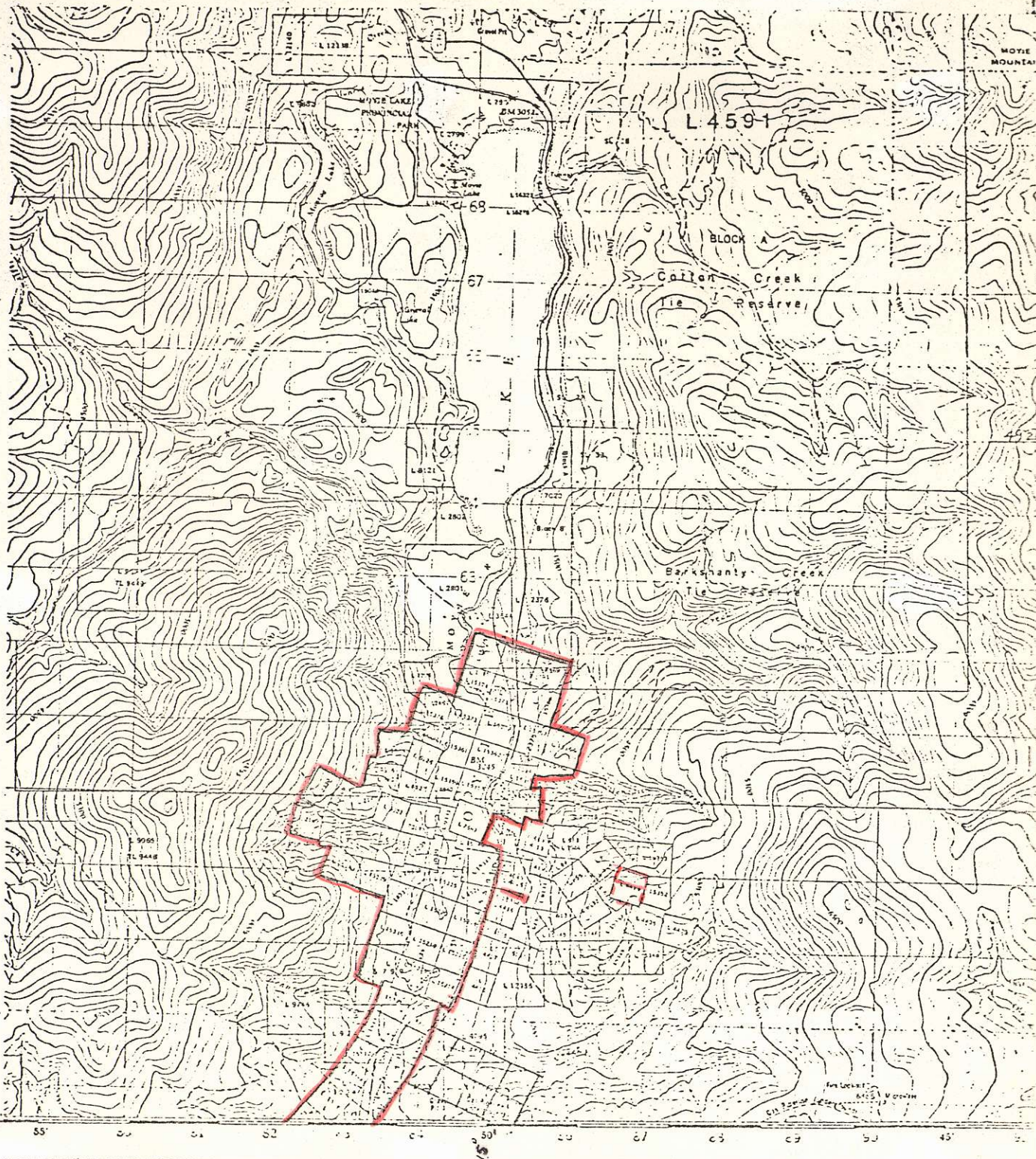
Location

The property is 20 miles south of Cranbrook and adjacent to the town of Moyie. It covers all of Lower Moyie Lake, and about one mile either side of the lake.

Property

St. Eugene owns : 81 Crown granted claims plus 4/16 undivided interest in Lot.4413, and thirteen located mineral claims, the first five of which come due on November 3, 1975. A list of Crown granted and recorded mineral claims is appended. St. Eugene also owns surface rights on which 1974 taxes were paid as follows :-

	<u>Lot</u>	<u>Acreage</u>	<u>Tax</u>	<u>Market based on Assessment</u>
	7662	50.05 (water)	\$ 4.13	122
Pcl. A	3003	24.05	176.05	9,848
Pcl. B	3003	0.17	17.40	976
Pcl. C	3003	13.42	181.49	7,214
	3039	50.0	506.53	21,250



4915

MOYIE LAKE
 KOOTENAY LAND DISTRICT
 BRITISH COLUMBIA
 Scale 1:50,000 Echelle

Roads	Routes	1/2 inch	1/2 inch
Hard surface all weather	Gravel, loose sand	1/2 inch	1/2 inch
Hard surface all weather	Gravel, loose sand	1/2 inch	1/2 inch
Route or stabilized surface all weather	Gravel, loose sand	1/2 inch	1/2 inch
Route or stabilized surface all weather	Gravel, loose sand	1/2 inch	1/2 inch
Unimproved street	Gravel, loose sand	1/2 inch	1/2 inch
Cart track	Gravel, loose sand	1/2 inch	1/2 inch
Bad cut line or post hole	Gravel, loose sand	1/2 inch	1/2 inch

FOR COMPLETE REFERENCE SEE REVERSE SIDE POUR UNE LISTE COMPLETE DES SYMBOLES VOIR AU VERSO



St. Eugene C.G.'s —
 St. Eugene M.C.'s —

ST. EUGENE MINING CORPORATION LIMITED

CROWN CHARGEABLE PROPERTIES

Claim	Lot No.	Acreage	Taxes	Claim	Lot No.	Acreage	Taxes
Borothy	2167	43.05	11.00	M L 21 Fr	15347	42.33	10.75
Arvento	2168	32.00	8.00	M L 18	15348	43.26	11.00
Apple	2169	46.47	11.75	M L 17	15349	51.57	13.00
Roberts	2330	37.07	9.50	M L 16	15350	51.62	13.00
Kruger	2331	29.60	7.50	M L 15	15351	45.05	11.00
Half Moon Fr	3545	46.03	11.75	M L 23 Fr	15352	33.00	0.50
Frizzo	6126	47.19	12.00	M L 24	15353	50.00	12.75
Guidon	6127	43.41	11.00	M L 25 Fr	15354	24.98	6.25
Etna	7015	38.71	9.75	M L 26	15355	51.27	13.00
Dunage	7016	51.65	13.00	M L 27 Fr	15356	50.34	12.75
Aurora	7017	46.40	11.75	Adol No. 7 Fr	15357	24.62	6.25
Horse Shoe	7022	49.54	12.50	Adol No. 1	15358	49.84	12.50
Portland	7205	45.11	11.50	Adol No. 4 Fr	15359	47.40	12.00
Cambrian	7662	51.60	12.75	M L 53	15360	27.83	7.00
Mabelle Fr	9593	25.11	6.50	M L 46	15361	44.57	11.25
Surprise	9805	50.72	12.75	Adol No. 5	15362	49.32	12.50
Pereola	9806	37.00	9.25	Adol No. 6 Fr	15363	35.33	9.00
Alice Fr	9807	3.26	1.00	M L 31 Fr	15364	42.00	10.50
M L 1	15214	48.46	12.25	M L 28	15365	51.65	13.00
M L 2	15215	49.12	12.50	M L 30	15366	51.65	13.00
M L 3	15216	49.09	12.50	M L 36	15367	51.50	13.00
M L 4	15217	34.20	8.75	M L 37	15368	51.65	13.00
M L 6	15218	51.16	13.00	M L 38	15369	51.65	13.00
M L 7	15219	51.65	13.00	M L 39	15370	51.65	13.00
M L 8	15220	51.65	13.00	M L 43	15371	51.65	13.00
M L 9	15335	43.18	11.00	M L 44	15372	51.65	13.00
M L 12	15336	51.65	13.00	M L 47	15373	50.71	12.75
M L 13	15337	51.65	13.00	M L 48	15374	51.65	13.00
M L 14 Fr	15338	30.55	7.75	M L 49	15375	51.65	13.00
M L 40	15339	45.62	11.50	M L 52	15376	51.65	13.00
M L 41	15340	44.42	11.25	M L Met Fr	15377	4.40	1.25
M L 42 Fr	15341	15.12	4.00	M L 35 1	15390	16.67	4.25
Adol No. 3 Fr	15342	40.91	10.25	M L 61	15378	46.72	11.75
Adol No. 2	15343	51.20	13.00	M L 60	15379	50.10	12.75
M L 55 Fr	15344	3.26	1.00	M L 63	15380	51.61	13.00
M L 19	15345	15.98	4.00	M L 62	15381	51.65	13.00
M L 20	15346	27.99	7.00	M L 65	15382	33.37	9.75
				M L 64	15383	45.63	11.50
				M L 67	15384	50.15	12.75
				M L 66	15385	51.61	13.00
				M L 69	15386	47.82	12.00
				M L 63	15387	49.59	12.50
				M L 71	15388	50.63	12.75
				M L 70	15389	51.13	13.00
						<u>3162.63</u>	<u>8277.00</u>

MINERAL CLAIMS

MOYIE AREA

Claim	Record No.	Next Assessment Due
Sandy #1 Fr.	6198	May 4, 1987
" 2 Fr.	6199	" " "
" 3 m.c.	6200	" " "
" 4 m.c.	6201	" " "
" 5 m.c.	6202	" " "
" 6 m.c.	6203	" " "
" 7 m.c.	6204	" " "
" 8 m.c.	6205	" " "
October Fraction	5192	November 3, 1975
Autumn No. 1	5193	" " "
" " 2	5194	" " "
" " 3	5195	" " "
" " 4	5196	" " "

Falconbridge Pop

1
2
3
4

Surface Rights

Lot.7662 (Cambrian)

Information received November 15, 1974 confirms that St. Eugene is paying taxes (\$4.20 - 1974) on 50.05 acres of water - that part of L. 7662 not covered by L. 2803 which covers the only 0.95 acres of land within L. 7662 (See survey sketches appended).

Lot 3039

Information received November 8, 1974 suggests that St. Eugene owns surface rights on 50 acres comprising the core of the peninsula including its southern protrusion jutting into Moyie Lake on its west shore, but not the north peninsula protrusion. St.Eugene also owns the timber rights on this block subject to obtaining a licence to cut and a 30¢/100 cu. ft. royalty. (Both peninsulas are only accessible by land through L. 3039 !). {See survey notes appended}~

Lot 3003

The appended survey plan of L. 3003 consists of :-

Pcl. B.	M.L. 1	0.17 acres
Pcl. A.	M.L. 60	24.05 acres
Pcl. C.	M.L. 62	13.42 acres

The actual value of the land contained within the three lots is difficult to determine. We own the timber, but its value would probably be offset by penalties designed to prevent logging around such a scenic lake.

Lakeshore property is being developed elsewhere along the lake, but sub-division of our large tracts would be a prerequisite, and an uncertainty under the present government's "green belt" policies. Should this be allowed, the saleable value based on assessed value, would probably average between \$4,000-\$4,500 per acre.

Our total tax bill of our land holdings, although escalating is currently \$885.60 per year. The assessed value of improved waterfront lots at the south end of Moyie Lake run \$875 on a 0.21 acre lot.

History

- 1898 - Branch line of Crow's Nest Pass Rly. via Moyie completed.
The St. Eugene Group makes first shipment of ore from Moyie.
Four groups working St. Eugene veins.
- 1899 - Three of above four groups incorporated into St. Eugene Consolidated Co.
- 1900 - St. Eugene Consolidated started up mill.
- 1905 - Fire destroyed shaft house, hoisting plant and mine portal.
- 1906 - Cominco acquires St. Eugene Consolidated.
- 1915 - Production declines at St. Eugene mine. (Sullivan starts development).
- 1917 - Fire destroys St. Eugene mill. (Sullivan in production).
- 1926 - Cominco builds 500-ton mill to retreat St. Eugene tailings.
- 1929 - St. Eugene retreatment mill shutdown.
- 1939 - St. Eugene Mining Corp. acquires holdings of St. Eugene Extension Mines and negotiates a 20-year lease dated April 17, 1937 on Cominco's St. Eugene property.
- 1958 - Lease on Cominco property expires.
- 1962 - Cominco and St. Eugene Mining Corp. participate in joint exploration program, agreement dated April 19, 1962.
- 1963 - Cominco withdraws during Stage II of the above joint program.
St. Eugene assumed management control.
- 1966 - Stage II completed.

(From a report by R. G. Gifford dated February 11, 1963)

Production

St. Eugene Mine Production up to 1915 was 1,018,323 tons averaging
7 oz. Ag., 14% Pb., 5% Zn.
The St. Eugene mill produced a Pb concentrate only.
Tailings ran 1.4 oz. Ag., 2.7% Pb., 5% Zn.
Smelter yield on the total mine production was
5.3 oz. Ag./T., 11.3% Pb. In the period 1915-21
5,800 tons were produced. The mine shutdown in 1921.

St. Eugene Tailings 1926-29. 524,354, tons retreated chiefly for Zn.
content.

Aurora Mine 1910-29, 3,352 tons of hand-sorted material averag-
ing 3.3 oz. Ag., 7.7% Pb., 18.5% Zn., was shipped.

Guindon Mine 1919-27, 31 tons of hand-sorted material averaging
3.5 oz. Ag., 11.8% Pb., 12.4% Zn was shipped.

Society Girl (private but adjoining St. Eugene to the east).
1900-1952 shipped 3,289 tons of hand-sorted material
averaging 4.2 oz. Ag., 16.8% Pb., 0.8% Zn.

Development (Prior to 1962)

(a) Underground

St. Eugene Mine

The ore deposit was developed from 19 different levels spread through a vertical range of 2,300 ft. The longest drift was off the 1800 Level and explored the Main (North) vein 4,000' eastward of the portal.

Drifting	37,000'+
Crosscutting	8,000'+
Sinking	930'
Raising	10,934'
Drilling	31,535'

Aurora Mine

Nearly all the development footage came from two levels.

Drifting & Crosscutting	2,200'
Sinking	40'+
Raising	50'+

Guindon Mine

Most of the development was on three levels.

Drifting & Crosscutting	1,100'
Raising	80'

(b) Surface

St. Eugene Mining Corp., drilled 20 EX size holes in the period 1940-1950 to give a total footage of 6,416'. Thirteen of the holes were on the east lake shore, two were near the Aurora Mine, three were near the Society Girl Mine, and two were at the southern limit of the property. Five of the holes located on the east shore did not reach bedrock.

The holes in general were designed to prospect for veins of the St. Eugene type.

1962 Joint Exploration Program

Cominco-St. Eugene Mining Corp., drilled three holes totalling 5,129' in 1962. All holes were on the east shore, south of the St. Eugene Mine. One of the holes was abandoned in overburden.

T. Connors contracted the drilling. Their crew worked three, eight-hour shifts per day for a six-day week. The holes were drilled with a B.B.S. No.2 drill machine and 30' pulls were utilized on all set-ups.

Hole C-1, 2,314' in length, was drilled entirely with standard AX equipment.

C-2 was 2,530' in length. The hole was drilled standard BX from bedrock collar to 602' then BX wire-line from 602' to 2,530'.

Both C-1 and C-2 encountered similar rock conditions. Comparing the two drilling methods used in the holes, the BX wire-line gave a lower bit cost and greater rate of advance than standard Ax. Moreover, the wire-line particularly out-performed standard equipment at depths greater than 1,000'.

C-3 was abandoned in overburden at a depth of 285'.

1965 - St. Eugene Exploration Program

During the 1965 field season a FS-2 Refraction Seismic Survey and a Hydrosonde Survey were carried out to determine bedrock depths along possible extensions of the St. Eugene vein system. Trenching and pitting of several geophysical anomalies on the Aurora grid and several geochemical anomalies on the Baltimore grid.

On the Baltimore C.G. 1755 ft. of diamond drilling were completed in five holes, proving a major fault passes through in a N-S direction with an indicated 200-250 ft. vertical displacement. (See Map SE-74-2).

Five packsack diamond drill holes totalling 665 ft. were completed. Weak vein-type mineralization was intersected in two of the five holes drilled. (See Map SE-74-2).

The 1965 drilling served to explain most of the geophysical anomalies tested, and added significantly to the geological data on these outlying areas. However, none of the assay results obtained were of economic significance or sufficient encouragement on which to base further work recommendations.

Geology

The Moyie vein system cuts the crest of a broad north-plunging anticline and transects upper Middle Aldridge, Upper Aldridge and basal Creston strata. The system contains sulfide-rich sections through a strike length of 11,000' and a vertical range of 4,400'. Production to date has been chiefly from the upper 2,200' of Middle Aldridge.

Stratigraphy

The basal Creston strata in the Moyie area consists mainly of thick-bedded argillite with subordinate argillaceous quartzite. The Upper Aldridge is chiefly thin-bedded argillite and argillaceous siltstone. The incompetent character of both these formations appears to make them less favourable for hosting either fissure-controlled or bedding-controlled mineralization than the underlying thick-bedded units of the Middle Aldridge.

The Upper Middle Aldridge sediments alternate from a 100' to 500' sequence of thick-bedded quartzite to a 100' to 200' sequence of thin-bedded argillite. The competent thick-bedded members appear to be the best host rock of the formation for both fissure-filled ore deposits and bedding-controlled replacement deposits of the Sullivan type.

Intrusives

Purcell diorite is the only intrusive observed near the Moyie vein system. A narrow dyke and a thin sill intrude sediments at the upper St. Eugene workings. Two thick sills occur 800' below the lower most workings.

The lower sills, each about 150' thick, are separated by 200' of sediments. The lowest of the two is known to crosscut the stratigraphy at a shallow angle. The stratigraphic gradient in this case is 50' down per 1,000' north.

The vein system is post-diorite. The thin sill at the upper workings is cut by the St. Eugene vein and one 1962 drill hole intersects the vein system below the lowest thick sill.

Ore Deposits

St. Eugene Mine

The St. Eugene deposits are associated with two sub-parallel fracture zones that cut Upper Middle Aldridge and Upper Aldridge strata. The two zones trend N70°W and dip 65°SW.

The ore minerals are galena and sphalerite. In addition there is much pyrrhotite and pyrite, some magnetite, and minor chalcopyrite. The vein matter is mostly quartz with minor amounts of biotite, chlorite, garnet and amphibole in decreasing order of abundance. According to Schofield (1915) magnetite was deposited first, the gangue minerals next, and sulfides last.

The 1962 drilling program showed that the St. Eugene veins extend at least 2,100' down-dip from the lowest mine workings. The altered and mineralized zone at this depth has an estimated true width of 180'. Of this, the best mineralized part averaged 1.6 oz. Ag., 2.8% Pb., 9.1% Zn for an estimated true width of only 3 ft.

(Exploration-wise our hopes were that a Sullivan-type replacement orebody in favourable (Sullivan-type) underlying rocks could be present. Also the possibility existed that the main vein (fracture) system could be related to such a deeper body, or could in themselves be of importance under the lake itself. Neither of these concepts has materialized although admittedly work has not been of an exhaustive nature).

The silver-lead ratio over the whole Moyie vein system is fairly consistent at 1 oz. Ag. per ton to 2.4% Pb. There is scant information on the overall lead-zinc ratio; however, it appears to be about 1% Pb. to 1-3% Zn. Table I shows the metal ratios at various points in the vein system.

TABLE I

<u>Location</u>	<u>Ratio oz Ag/T.: 2% Pb.</u>	<u>% Pb. : % Zn.</u>	<u>Remarks</u>
St. Eugene Mine	1:2	-	Ag. ratios are consistent throughout mine sampling data and agree closely with the overall production record. Sampling data showing Zn. grade is not available; some Zn-rich areas apparently were not mined.
Aurora Mine	1:2	1:2	Data from the overall production record.
Guindon Mine	1:3	1:1	Data from the overall production record.
Society Girl Mine	1:4	-	Data reported by Schofield (1915) for the sulfide material.
1962 Drilling Program	1:2 to 3	1:1 to 3	Data from C-1 and C-2 core sampling.

Aurora and Guindon Mines

The Aurora and Guindon deposits are on the west side of Moyie Lake in Upper Middle Aldridge strata. The deposits are 4,000' northwesterly of the St. Eugene Mine, and roughly on strike with the St. Eugene vein system (See Photo #2). Galena and sphalerite are the chief ore minerals present.

The Guindon vein is about 700' north of the Aurora. It strikes east and dips 60° S.

The Aurora deposits are associated with two veins trending $N75^{\circ}$ W. The most southerly vein is vertical, the other dips 55° SW. It is reported the two veins should converge about 30' below No. 2 tunnel.

Society Girl Mine

The Society Girl deposits occur in basal Creston strata about 3,000' southeast of the St. Eugene Mine. The Society Girl is not part of the Cominco-St. Eugene Mining Corporation property.

The deposits occur in two veins about 200' apart. Both veins trend $N60^{\circ}$ W and dip 60° SW.

Galena and sphalerite are dominant in the deeper unoxidized workings. The near surface deposits are oxidized to cerussite and pyromorphite.

Ore

Two holes in the 1962 drilling program intersected sulfides. Both intersections appeared to be in the same vein structure. It is assumed the structure sub-parallel the St. Eugene South Vein. Projection places it 450' south of the South Vein at the 2400 Level (elevation 2,430').

Hole C-1 cut the structure 600' down-dip from the 2400 Level, and C-2 cut it 1,500' below C-1. Sampling was from 1,001' to 1,111' in C-1, and from 2,110' to 2,357.5' in C-2. The significant intersections are shown in Table II, and locations shown on Map SE-74-3.

TABLE II

<u>Hole No.</u>	<u>From</u>	<u>To</u>	<u>Estimated True Width</u>	<u>oz. Ag.</u>	<u>% Pb.</u>	<u>% Zn.</u>
C-1	1,105'	1,107'	1.5'	3.3	9.7	0.1
C-2	2,316'	2,320.5'	3'	1.6	2.8	9.1
	2,349'	2,350'	0.5'	2.1	5.4	7.6

References

- 1) Chubb, P.A. (1939) - St. Eugene Mining Corp. Moyie, B.C.
- 2) Gifford, R.G. (1962) - Progress reports, Moyie project.
- 3) Gwillam, J.C. (1909) - St. Eugene Mine, Moyie, B.C.
- 4) Kerr, F.A. (1937) - St. Eugene Extension Mines, Moyie, B.C.

- 5) Minister of Mines, B.C.
Annual Reports - Aurora, 1909, 1923;
Guindon, 1917, 1923; Mines Index
1937-53 Table I;
St. Eugene, 1898, 1904, 1909;
Society Girl, 1909, Mines Index 1937-53,
Table I.
- 6) Schofield, S.J. (1915) - Cranbrook map-area, Geological Survey
Memoir No. 76.
- 7) Smith, A. (1949) - St. Eugene Mine, Moyie, B.C.
- 8) Swanson, C.O. (1948) - St. Eugene Mine, Moyie, B.C.
- 9) Burgoyne, A. (1965) - 1965 Exploration at St. Eugene Property
- 10) Smith, A. (1966) - 1966 Work - Moyie, B.C.
- 11) Smith, A. (1969) - Report on Operations 1962-1968

Attachments

- 1) General Geology of Moyie Area.
- 2) Ideal Section showing Stratigraphy between Midway and St. Eugene
Mines.
- 3) Claim Map of Moyie Property.
- 4) Geological Section showing 1962 Drilling.
- 5) Location Plan - 1965 work programs and drill holes.

D. H. Brown, P. Eng.

November 20, 1974

A P P E N D I C E S

LEGAL SURVEYS

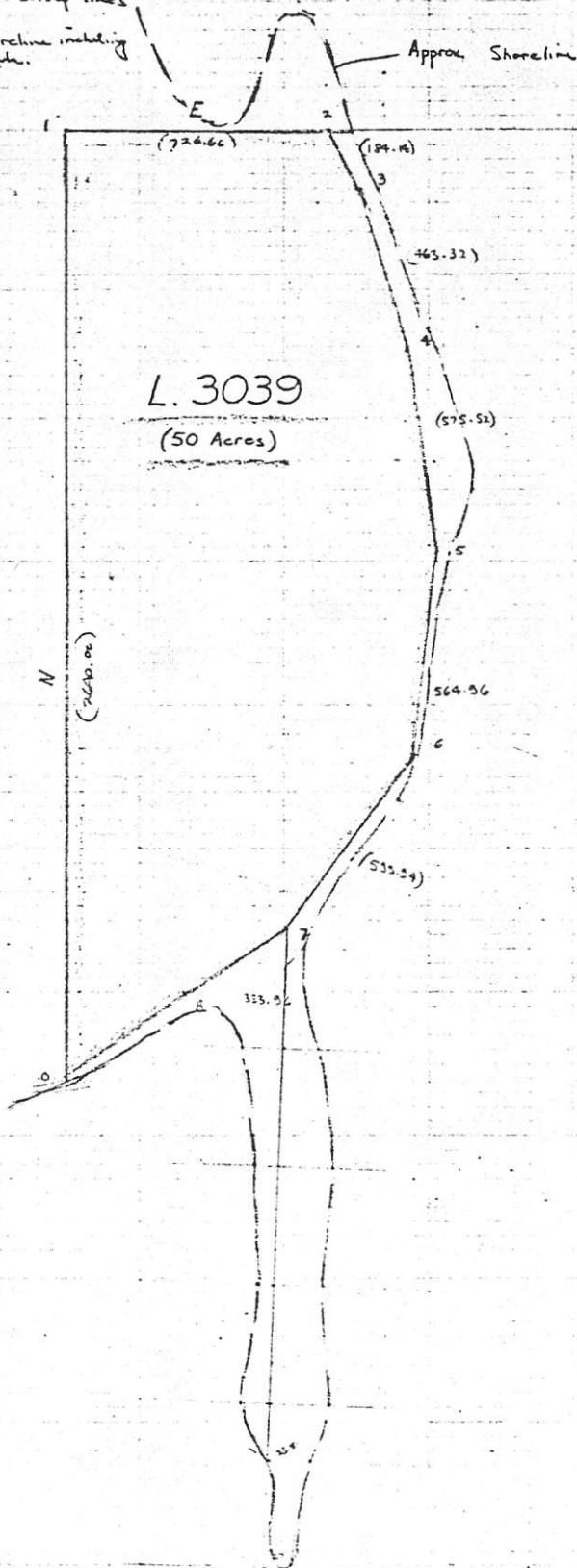
Plotted Nov. 15/74 by R.J.E. from
surveyors field notes.

Approx. Area with planimeter

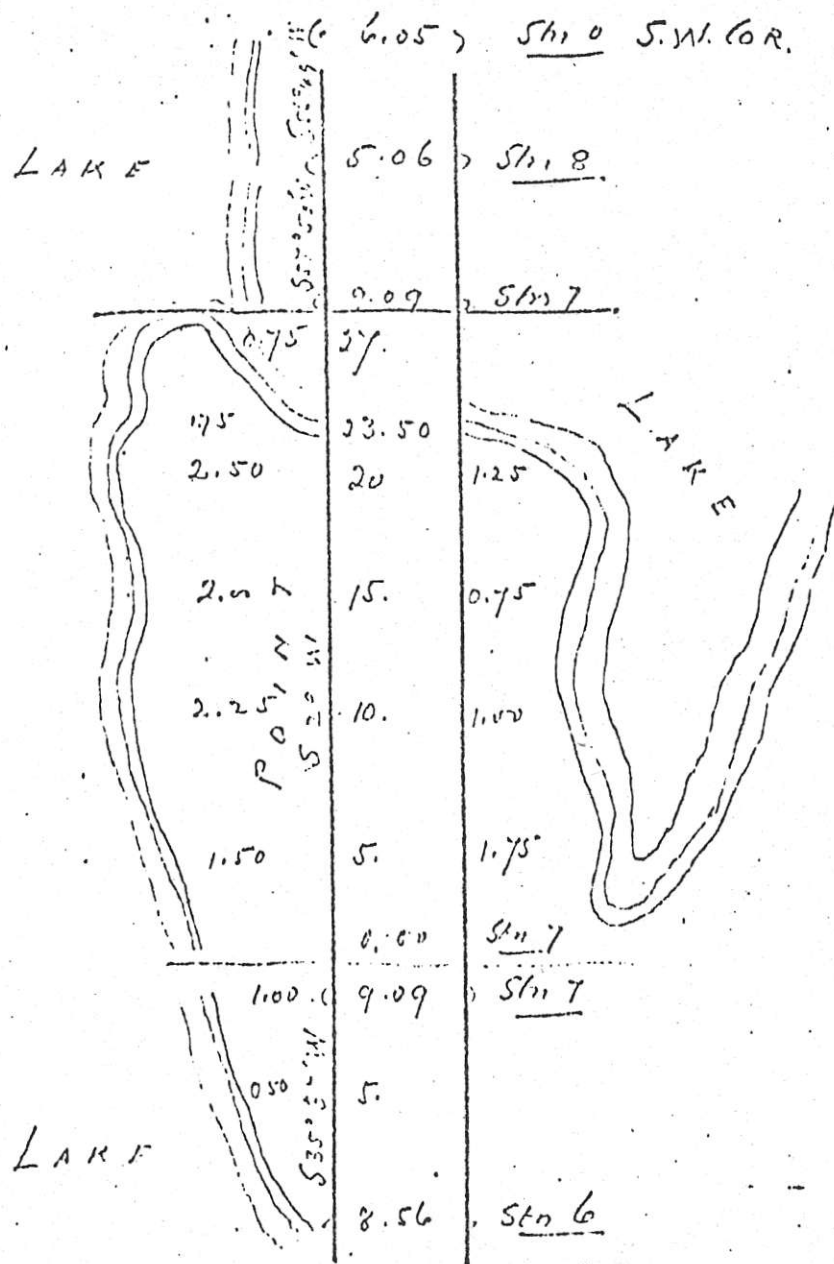
1" = 400'

= 49.15 within survey lines

= 59.87 to shoreline including
peninsula.



4



Traverse Table

Sta.	Dist.	Bearing	LAT.		DEP.	
			N.	S.	E	W
0		(S.W. COR)				
0-1	40.00	North	40.00			
1-2	11.01	East			11.01	
2-3	2.79	S 27° 06' E		2.48	1.27	
3-4	7.02	S 16° 13' E		6.74	1.96	
4-5	8.72	S 8° 33' E		8.62	1.30	
5-6	8.56	S 6° 05' W		8.51		0.91
6-7	9.09	S 35° 37' W		7.39		5.79
7-8	5.06	S 57° 50' W		2.62		4.33
8-0	6.05	S 56° 48' W		3.31		5.06
			40.00	39.67	15.54	15.59

The above line was run the 22nd day of August 1897.

The above line was run the day of 189.....

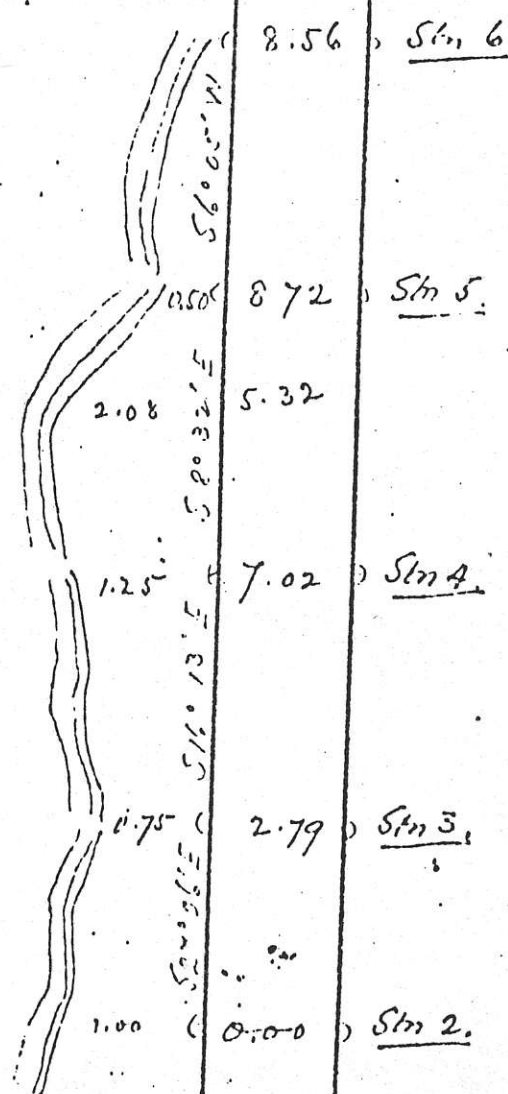
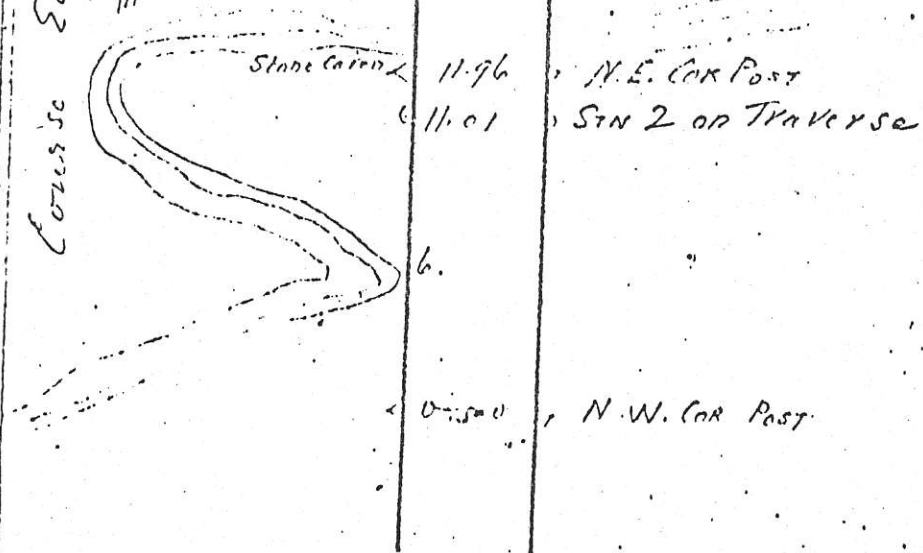
Northern Boundary of Lot 3039, Q1.

Course East

MOYIE

LAKE

MOYIE LAKE



The above line was run the 23rd day of April 1897.

The above line was run the 22nd day of April 1897.

Western Bdy of LOT 3039.91.1

Description.

Beginning at S.W. Corner post on shore of Mogyi Lake, thence North (110.00) forty chains, thence East (11.01) eleven ¹/₁₀₀ chains to Lake shore, thence South along Lake shore to point beginning, containing in all (49.83) forty nine ⁸³/₁₀₀ acres.

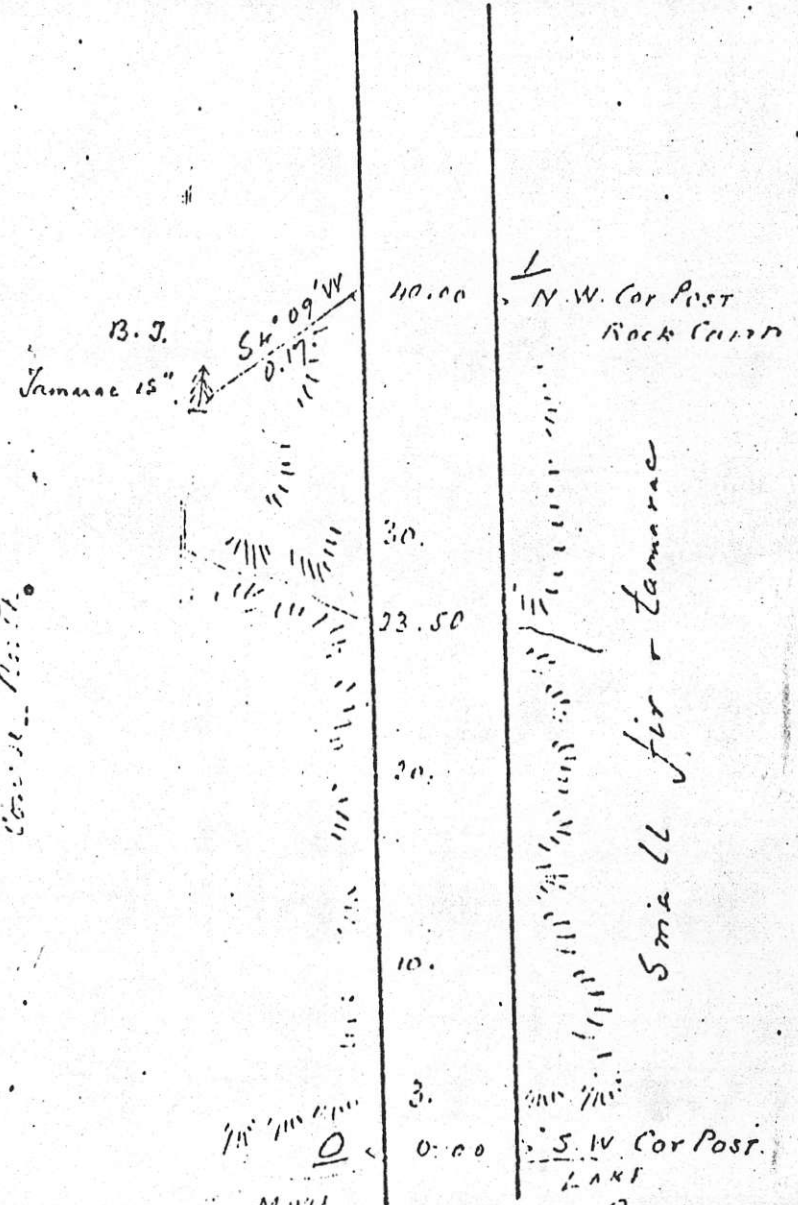
Affidavit.

I, Harry L. Cummins a duly authorized Land Surveyor of the Province of British Columbia make oath and say that I have examined the herein described land and declare it to be third class land within the meaning of the Act.

Subscribed before me
 H. Laidlaw, J.P.
 May 24th 1897.
 Text-plate - 13 C

Harry L. Cummins
 Provincial Land Surveyor

The above line was run the day of 1897



The above line was run the 23 day of August 1897.

L. 9 35-85
15

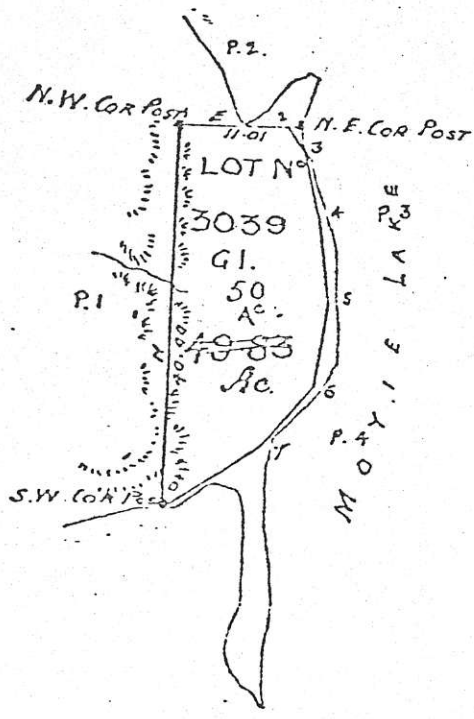
L. 1. 4577
98

PLAN

OF

I. B. SANBORN'S PURCHASE ON
MOYIE LAKE EAST KOOTENAY B.C.

20 Chains = 1 Inch



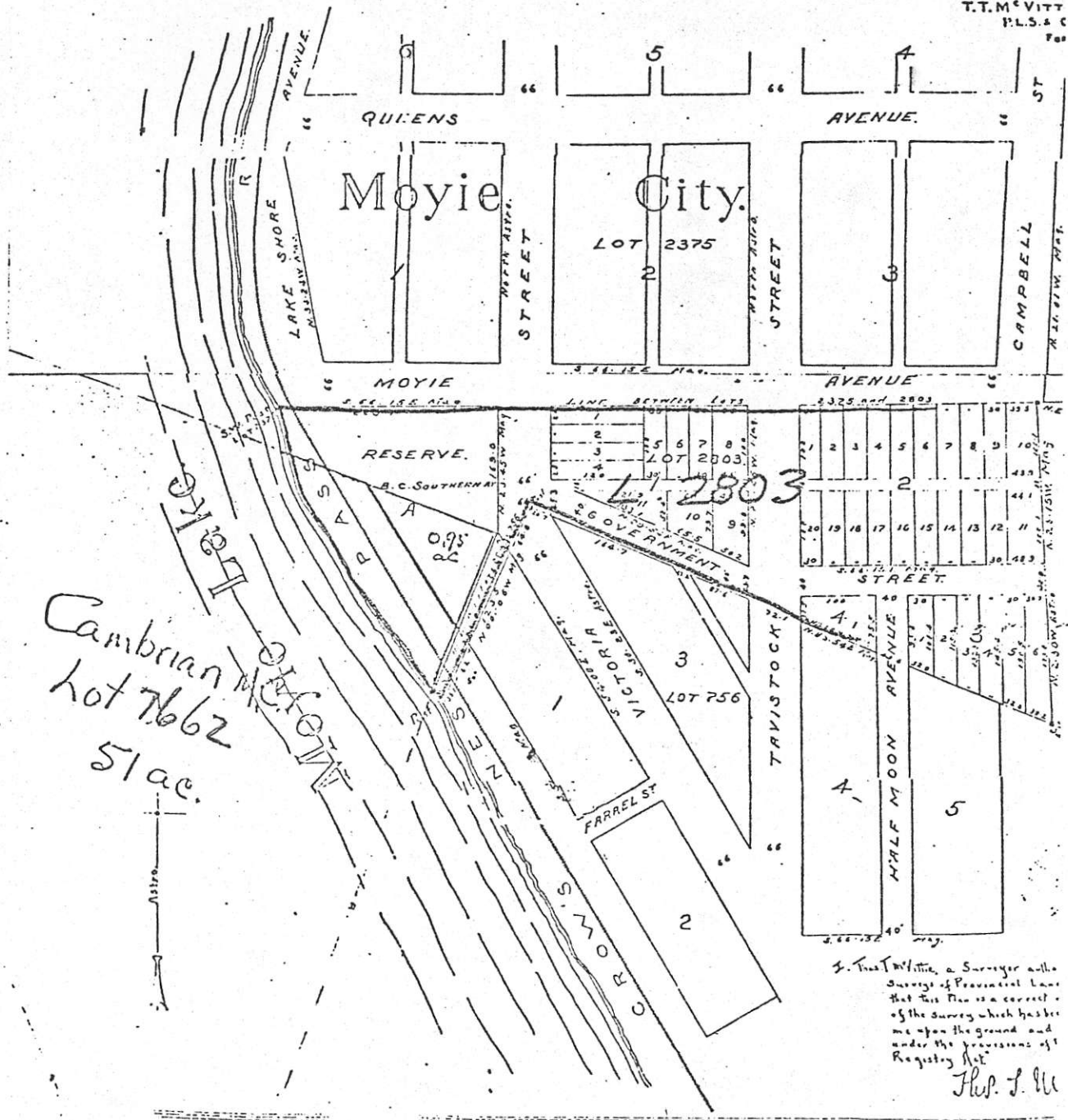


Subdivision of lot 2003
BEING PART OF TOWNSITE OF MOYIE.

East Kootenay.
B.C.

Scale 200 Feet = 1 Inch

T.T. McVITT
P.L.S. & C.
VAN



Cambrian
lot 7662
51 ac.



I, T.T. McVitt, a Surveyor with
Survey of Provincial Lands
that this Plan is a correct
of the survey which has been
me upon the ground and
under the provisions of
Registry Act
T.T. McVitt

James Dunsmuir

Lieutenant-Governor



LAND ACT.

Province of BRITISH COLUMBIA)
Register

James Dunsmuir

British  Columbia.

Crown Grant No. 3792
237

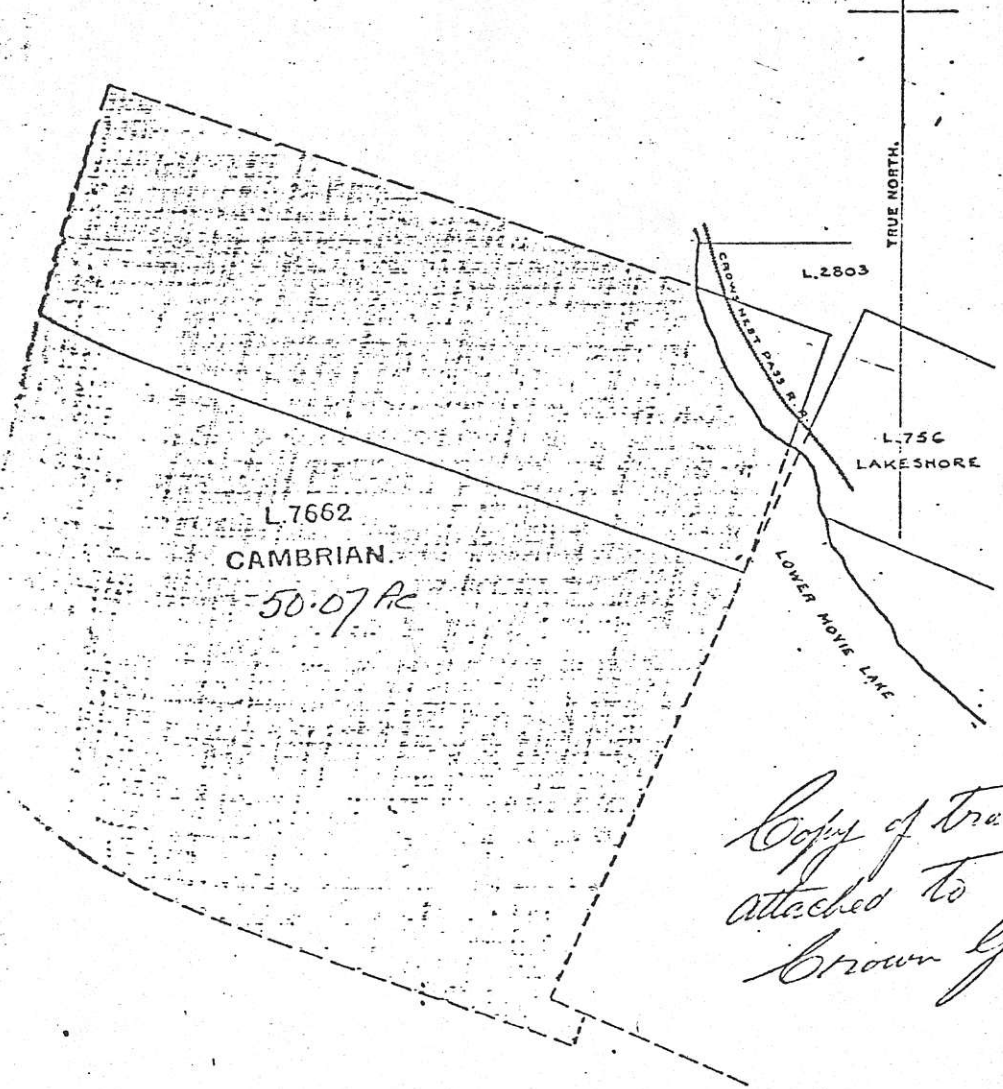
KOOTENAY DISTRICT.

J.C.

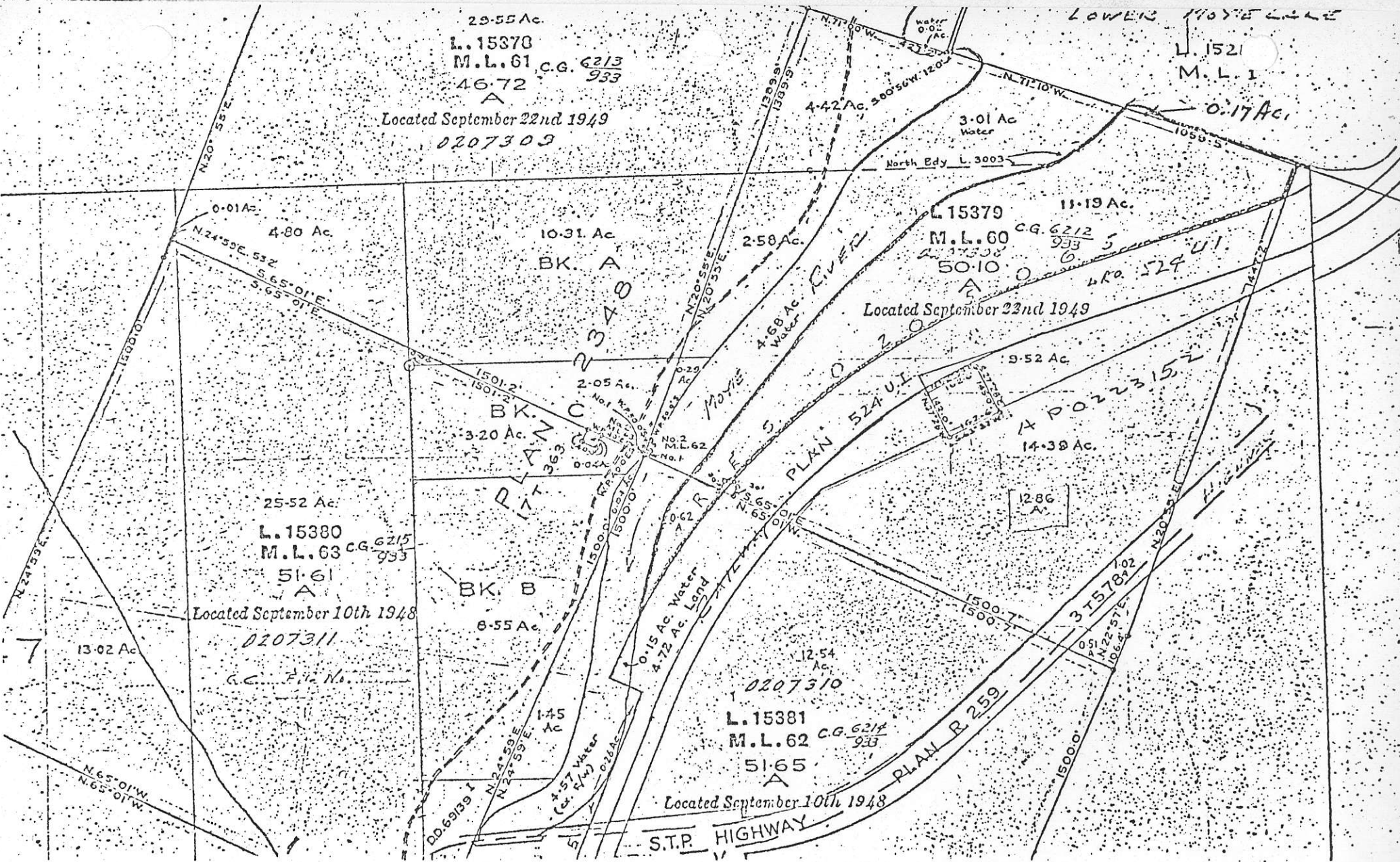
Mining Company Limited, Heavy Personal Liability

Scale, 300 Feet = One Inch.

Group One.



*Copy of tracing
attached to
Crown Grant.*



29.55 Ac.
L. 15378
M.L. 61 C.G. 6213
46.72 933
A

Located September 22nd 1949
0207303

LOWER MONEY CREEK
L. 1521
M.L. 1
0.17 Ac.

0.01 Ac.
4.80 Ac.

10.31 Ac.
BK. A

L. 15379
M.L. 60 C.G. 6212
50.10 933 5
A
40.524 U.I.

Located September 22nd 1949

1501.2
1501.2
BK. C

2.05 Ac.
3.20 Ac.

25.52 Ac.
L. 15380
M.L. 63 C.G. 6215
51.61 933
A

Located September 10th 1948
0207311

BK. B
8.55 Ac.

12.54 Ac.
L. 15381
M.L. 62 C.G. 6214
51.65 933
A

Located September 10th 1948

S.T.R. HIGHWAY



1. Looking Northeast from Southwest end of Moyie Lake showing St. Eugene Land Holdings relative to developed area.



2. Mining property, relative to Moyie Lake looking West from St. Eugene vein outcropping on top of hill.



3. Looking North from South end Moyie Lake. Showing lake front development to October, 1974.



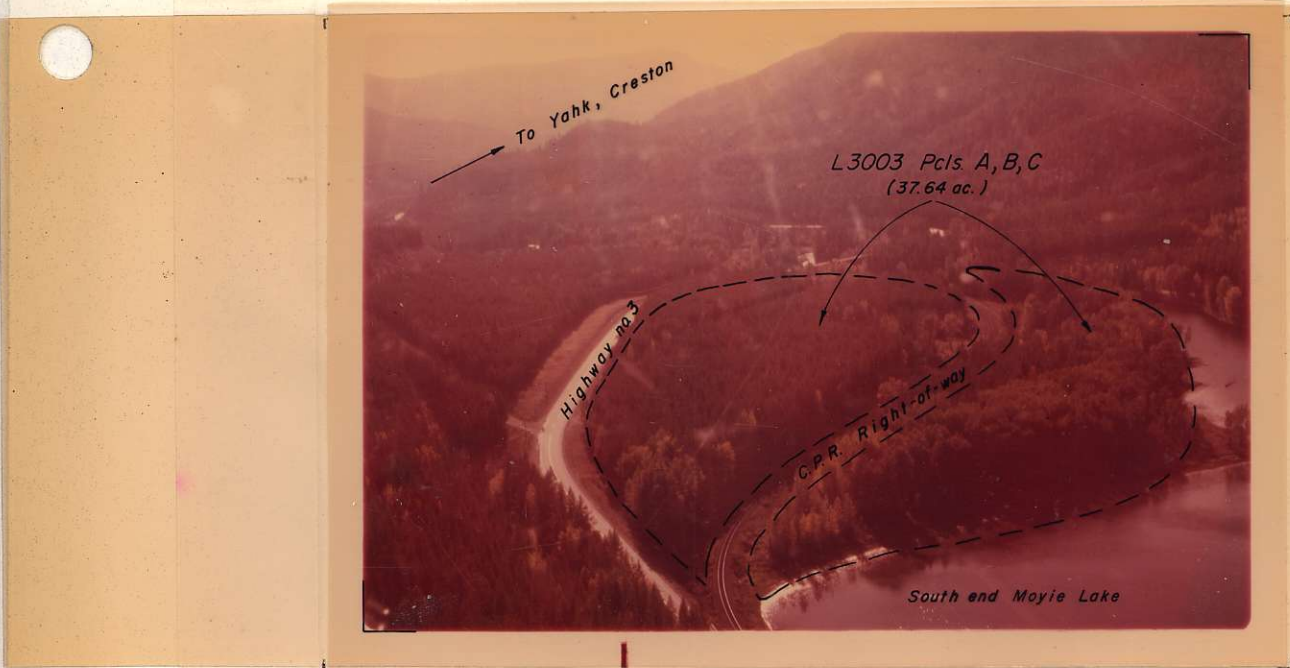
4. North Cove Beach on West side Parcel #1. Property line not found.



5. South Cove Beach on West side Parcel #1. Property line should be about 200 feet left of photo.



6. City of Moyie looking North.



7. Details of South Parcel #1.



8. Triple equipped outhouse on West Parcel #1, being the only standing building on our Moyie Land Holdings.

L. 15370
M.L. 61 C.G. 6213
46.72
A

Located September 22nd 1949
0207309

U. 15214
M.L. 1

17A

0-01 Ac.
4-80 Ac.
N. 24° 59' E. 532
S. 65° 01' E.
5-65-01 E.

10-31 Ac.
BK. A

L. 15370
M.L. 60 C.G. 6215
50.10
A

Located September 23rd 1949

177 PLAN C 2348
363
3-20 Ac.
2-05 Ac.
No. 1
M.L. 62
No. 1

25-52 Ac.
L. 15380
M.L. 63 C.G. 6215
51.61
A

Located September 10th 1948
0207311

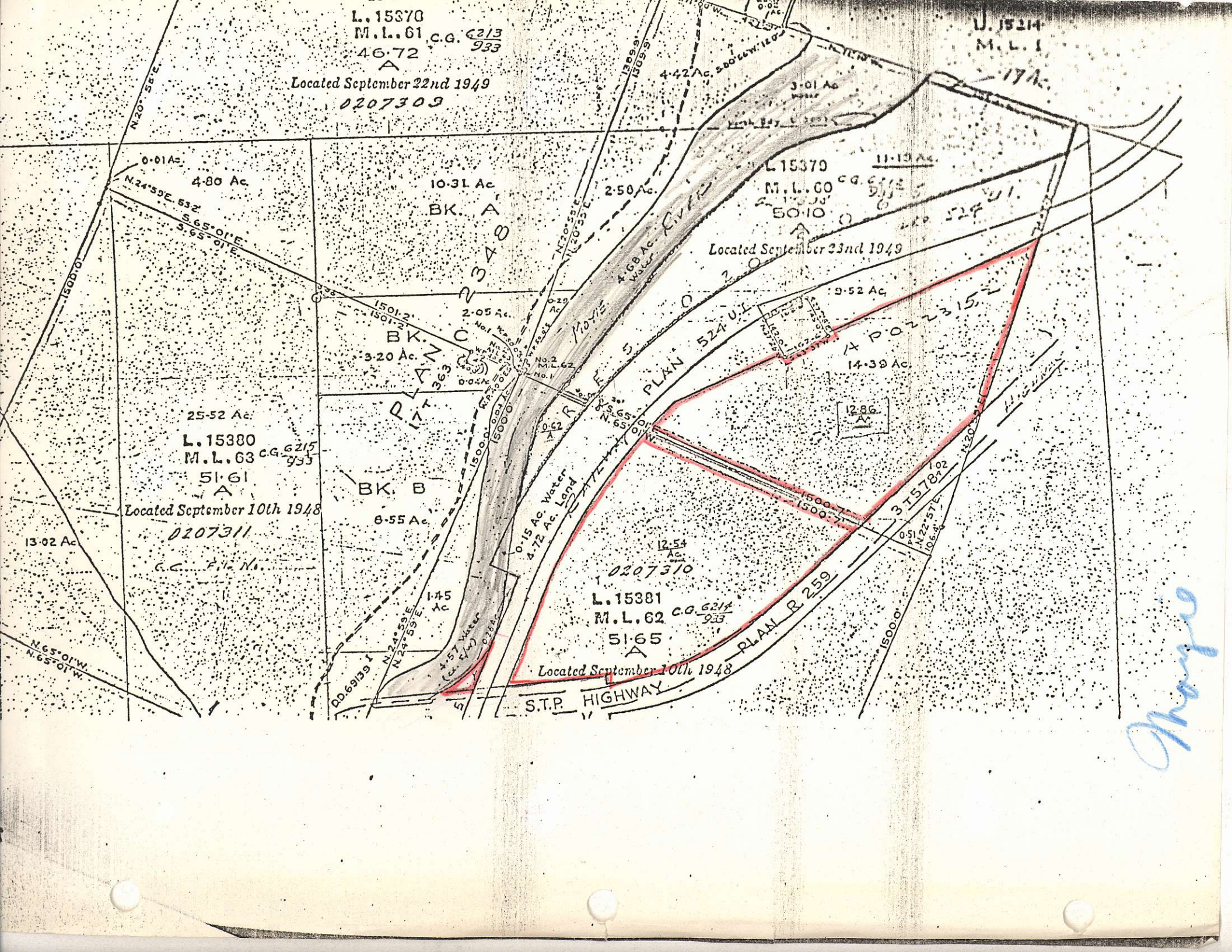
BK. B
8-55 Ac.

12-54 Ac.
0207310
L. 15381
M.L. 62 C.G. 6214
51.65
A

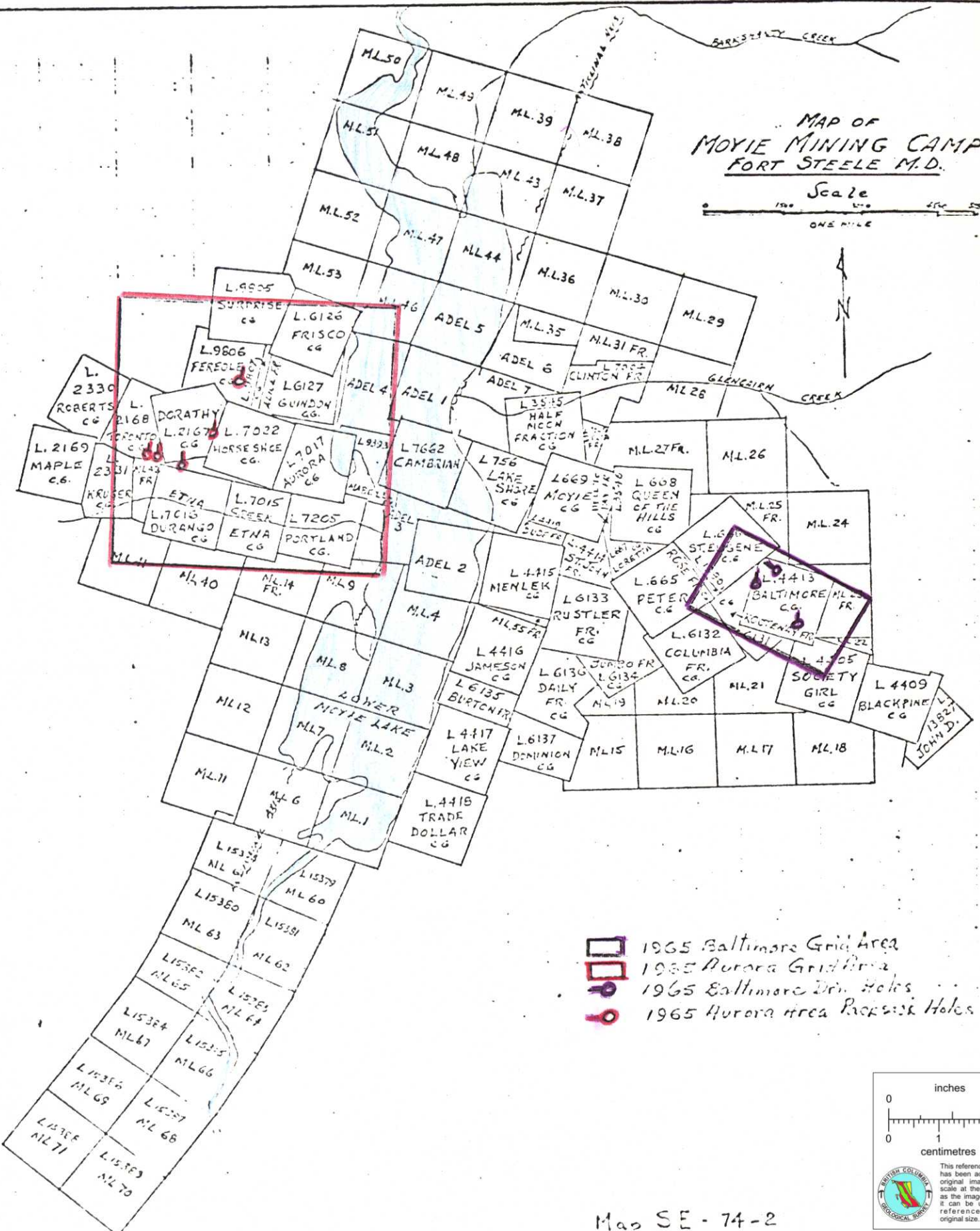
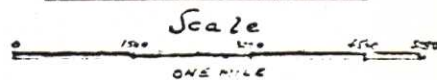
Located September 10th 1948





S.T.P. HIGHWAY
PLAN R 259

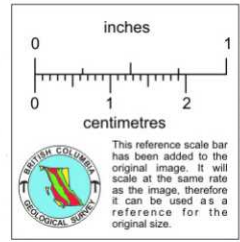
Map



MAP OF MOYIE MINING CAMP FORT STEELE M.D.



-  1965 Baltimore Grid Area
-  1965 Aurora Grid Area
-  1965 Baltimore Drill Holes
-  1965 Aurora Area Prospect Holes



Map SE - 74 - 2

SOUTHWEST

NORTHEAST

MCDONALD CR

RUDD FARM

ST. EUGENE HILL

6000'
4000'
2000'
0
-2000'
-4000'
-6000'

SECTION DATUM LINE

BASE OF 2ND UNIT

BASE OF 5th UNIT

BASE OF 8th UNIT

LOWER LIMIT OF OUTCROP

POSSIBLE BASE OF MIDDLE ALDRIDGE (ASSUMED THICKNESS = 8000')

LOWER ALDRIDGE

CRESTON TRANSITION

UPPER ALDRIDGE

MIDDLE ALDRIDGE

ST. EUGENE QUARTZITE

SHAFT ARGILLITE

ARGILLITE
BRECCIA

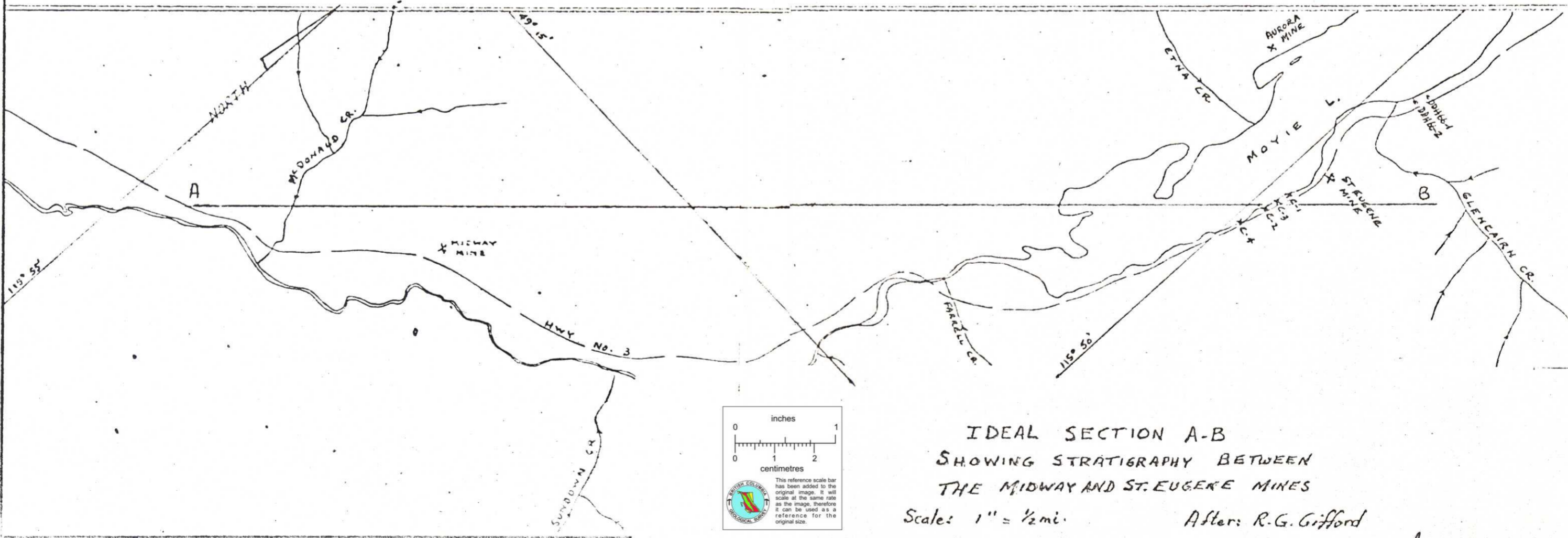
DIORITE

DIORITE

ROAD QUARTZITE

IDEAL SECTION A-B

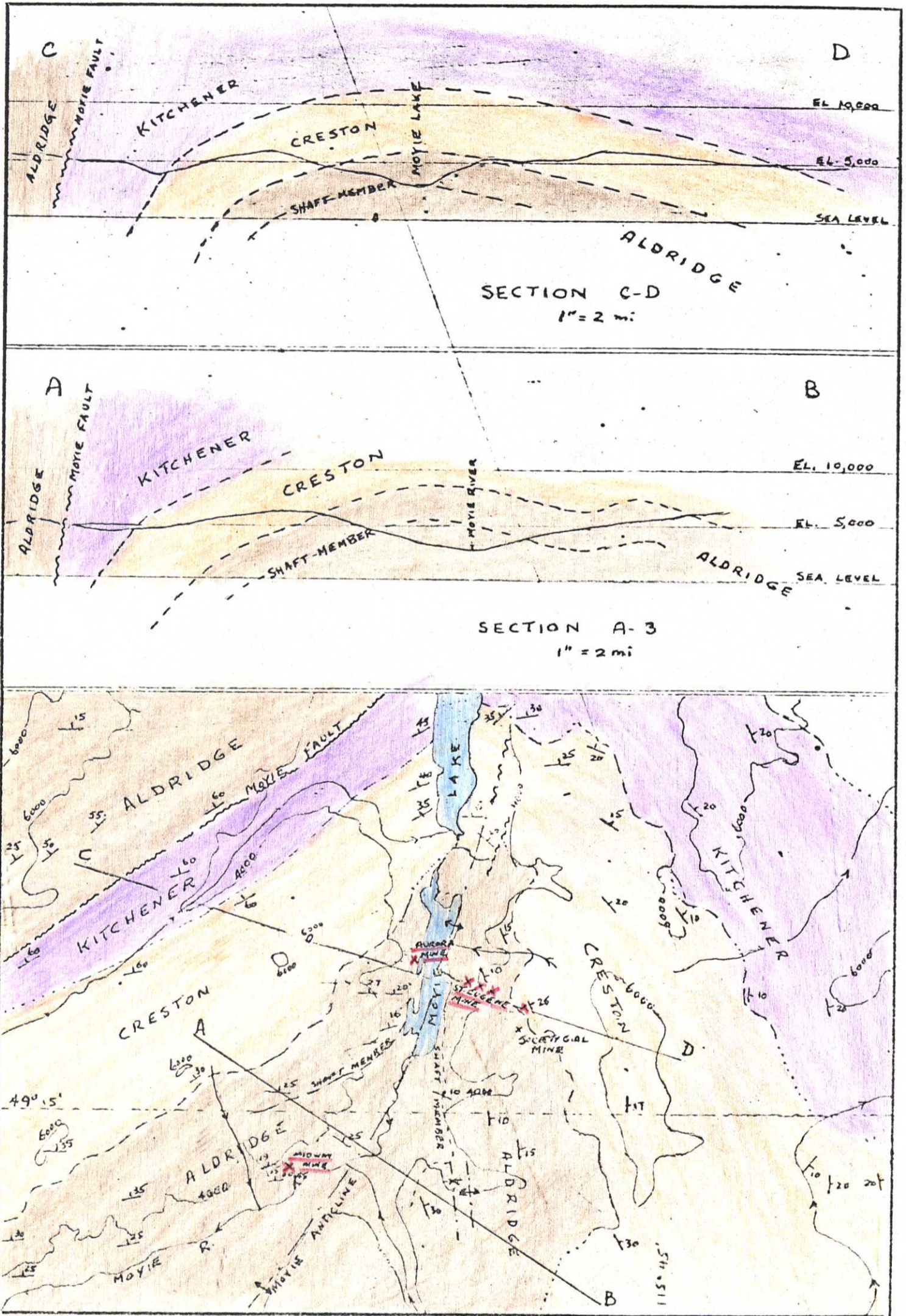
1" = 1/2 mi.



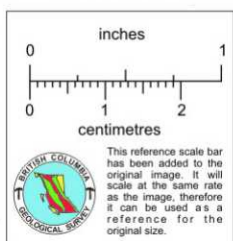
IDEAL SECTION A-B
SHOWING STRATIGRAPHY BETWEEN
THE MIDWAY AND ST. EUGENE MINES

Scale: 1" = 1/2 mi.

After: R.G. Gifford



Moyie AREA - GENERAL GEOLOGY



Scale 1" = 2 mi.

After BGGifford
Map SE 74-4

GEOLOGICAL MAP (A. Smith)

and
DRILL HOLE LOCATION
1962 & 1966

ST. EUGENE AREA - MOYIE

