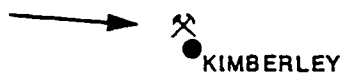


SULLIVAN MINE

160 million tonnes
@ 6.7 % Pb, 5.8 % Zn, 80 g/t Ag



KIMBERLEY

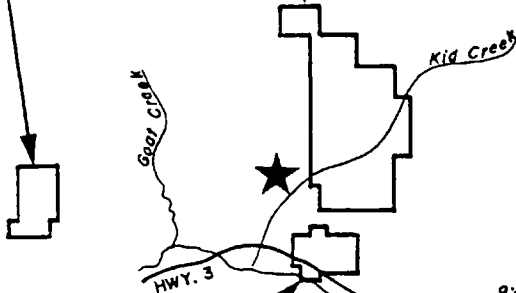
POLARIS



CHEVRON/KOKANEE
(55)
KYDD (M717)

CRANBROOK

CHEVRON/HOMESTAKE
(50) DEVELOPMENT
ROW (M568)



ST. EUGENE MINE

MIDWAY MINE

CHEVRON/FALCONBRIDGE
(40) /ST.EUGENE

Mt.MAHON (M525)

CRESTON

FORMOSA RES.CORP
/CHEVRON - (48.2)

YAHK

GOATFELL (SKY) (M586)

CANADA
U. S. A.

- CHEVRON LAND
- (25) END POINT PERCENT INTEREST
- ⌘ MINE
- ★ MAJOR SHOWING



KOOTENAY Pb-Zn-Ag PROJECTS

BRITISH COLUMBIA