

BY T. LARSEN DATE 3-8/72

SUBJECT FINE LAKE ANOMALY (MC-CLAIMS)

SHEET NO. 1 OF 2

CHKD. BY DATE

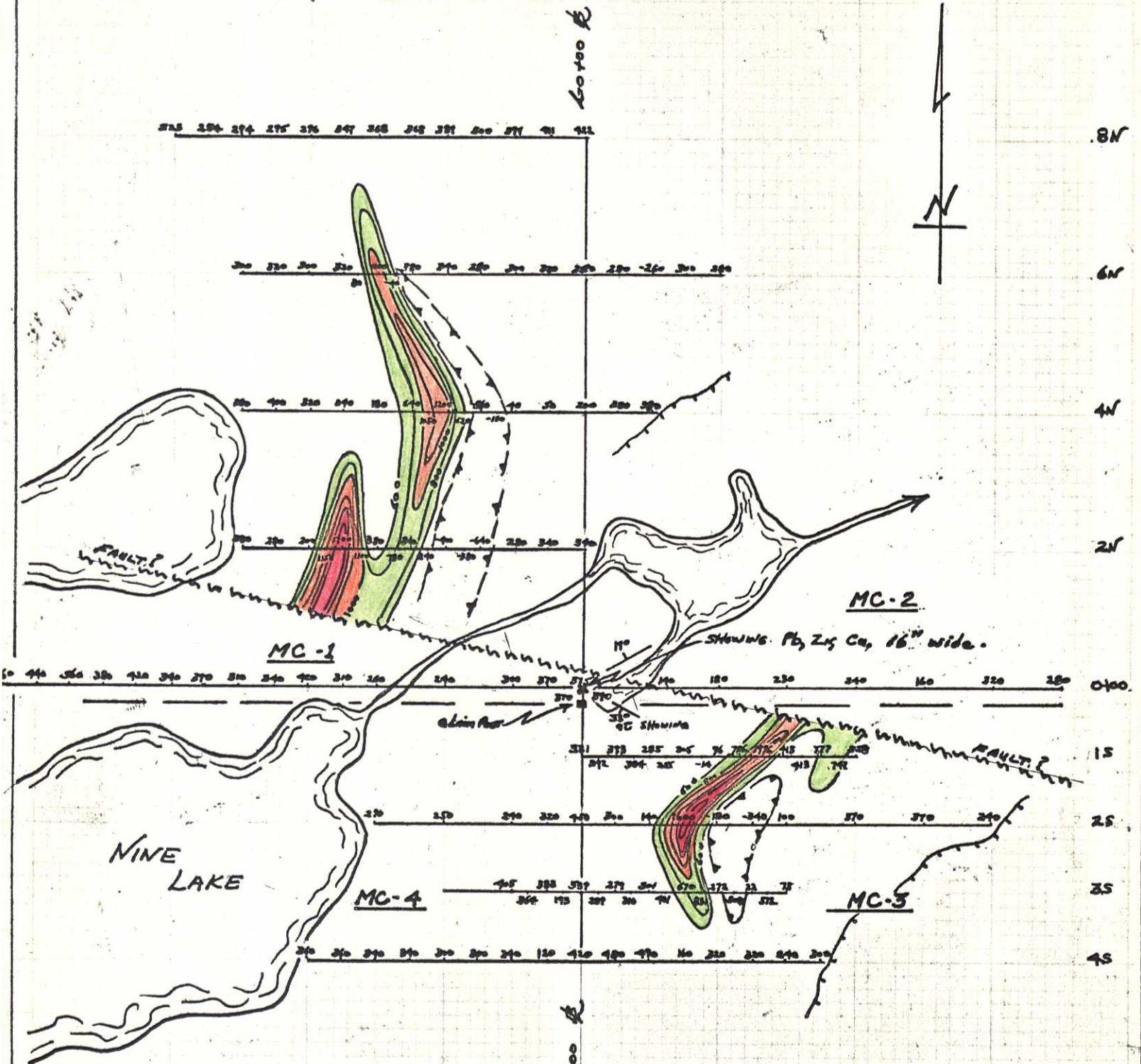
M.F.I. - FLUKGATE MAG.

JOB NO. BC-14-

SCALE 1" = 200'

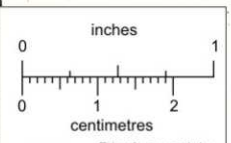
OPER. D. WRIGHT AND G. GRUNWALD

MAG. FEET - 6,400



- >1400 gammas
- 1000-1400 gammas
- 600-1000 gammas

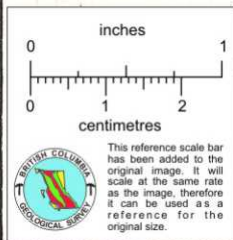
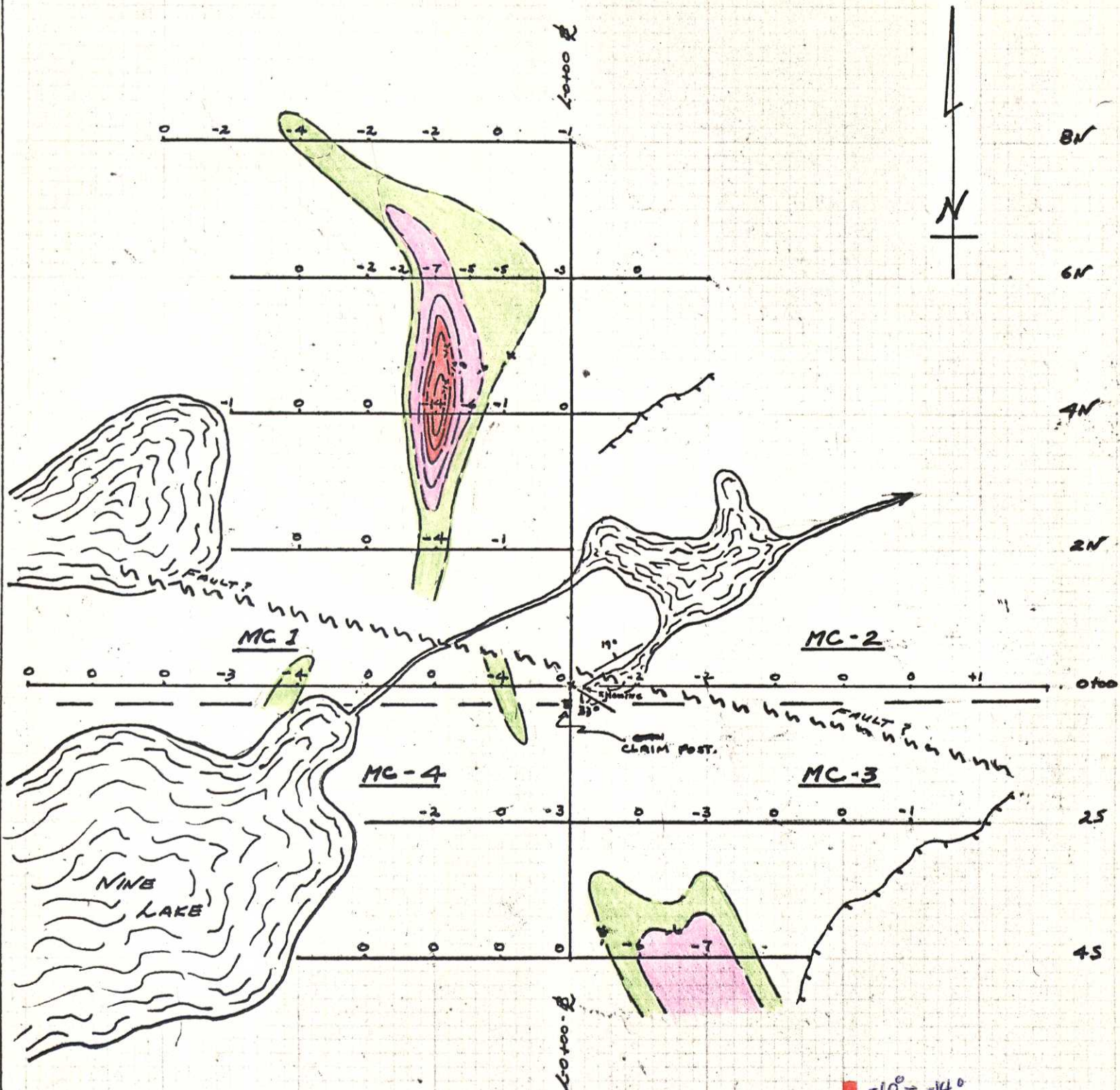
822564



This reference scale bar has been added to the original image. It will scale at the same rate as the image, therefore it can be used as a reference for the original size.

BY T. LAROSE DATE 9/7/72
 CHKD. BY DATE
 SCALE 1" = 200'

SUBJECT NINE LAKE Anomaly (MC-CLAIMS)
 G.E.M. SURVEY $a = 200'$ 1830 Hz
 OPER. T. LAROSE + F. CHOW
 SHEET NO. 2 OF 3
 JOB NO. BC-14
 C.E.M. FEET. 4,500



■ -10° - -14°
■ -6° - -10°
■ < -6°

BY T. LAROSE DATE 9/7/72

SUBJECT NINE LAKE ANOMALY (MC-CLAN)

SHEET NO. 3 OF 3

CHKD. BY DATE

C.E.M. VERTICAL LOOP

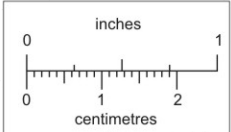
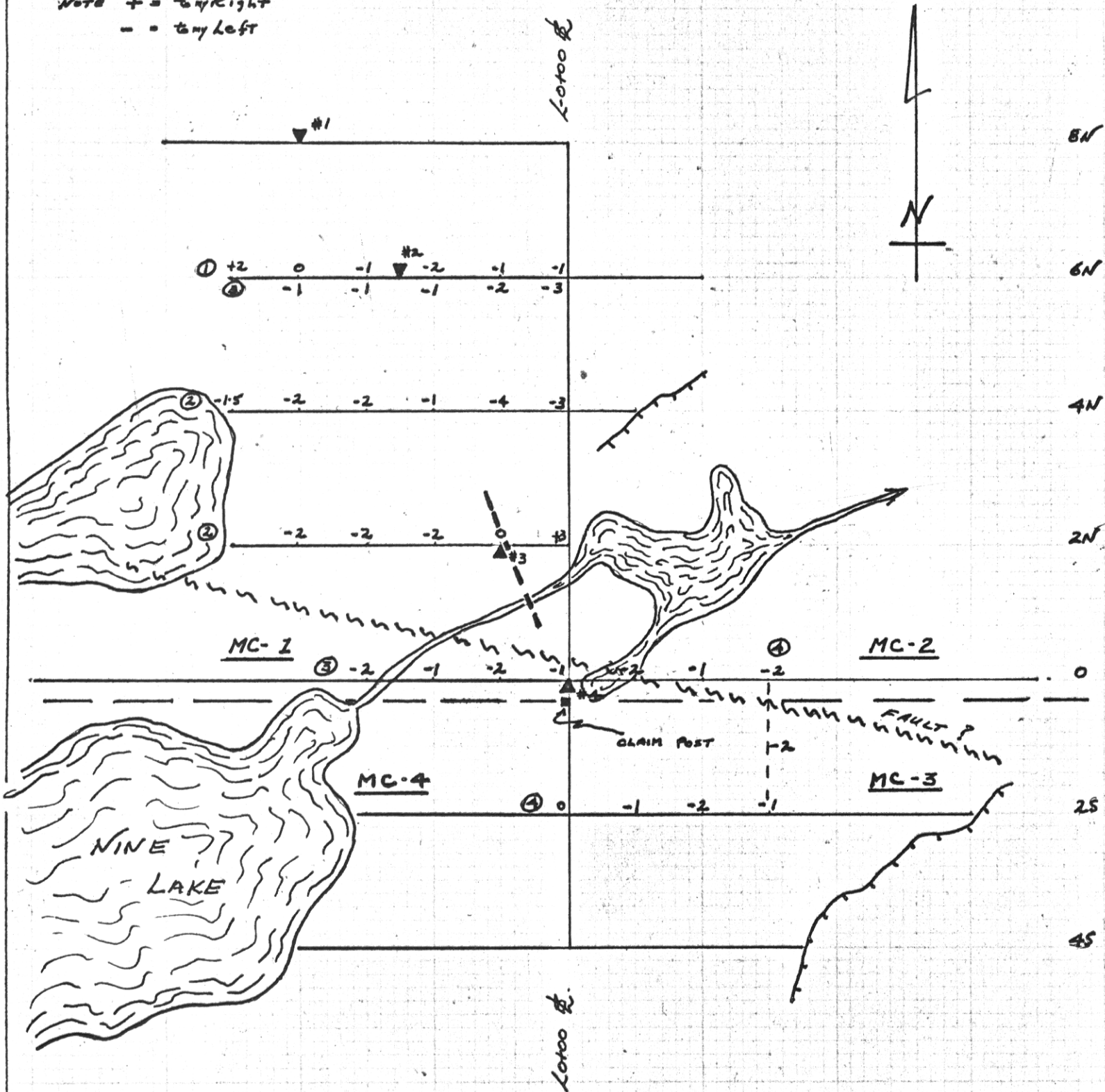
JOB NO. BC-14

SCALE: 1"=200'

OPER. T. LAROSE

VERTICAL LOOP 2500 FT.

NOTE + = to right
- = to left



This reference scale bar has been added to the original image. It will scale at the same rate as the image, therefore it can be used as a reference for the original size.