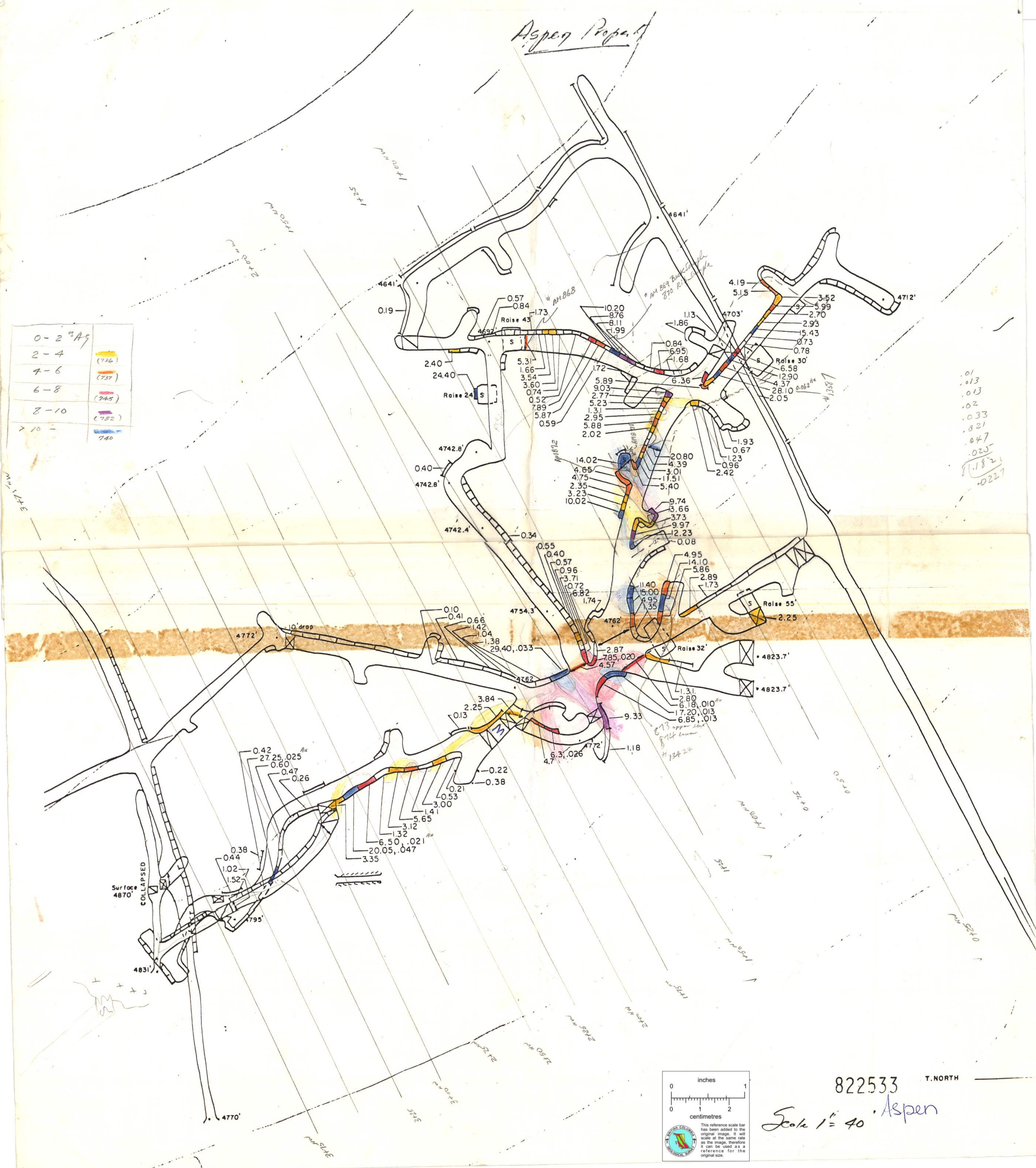


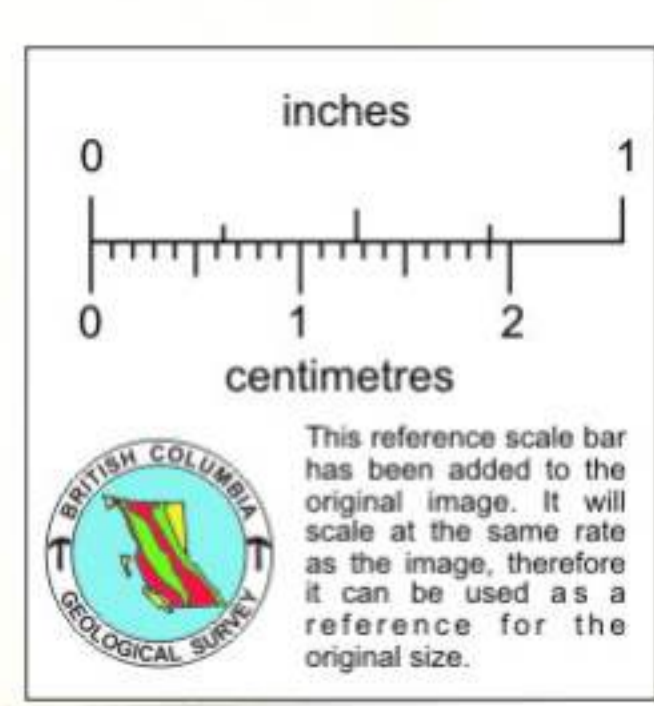
Aspen Report

0-2	As
2-4	(736)
4-6	(737)
6-8	(745)
8-10	(752)
> 10	740



0.01
0.03
0.03
0.02
0.23
0.21
0.47
0.25
1.182
0.227

Surface
4870'
COLLAPSED



822533 T.NORTH
Scale 1" = 40' Aspen