

# SEDIMENTARY AND VOLCANIC ROCKS

## QUATERNARY

Pleistocene and Recent

**11** Drift and alluvium

## TERTIARY

**10** Andesitic and basaltic volcanic rocks

## CRETACEOUS AND TERTIARY

Upper Cretaceous to Eocene  
Sustut Group (in part)

**9** Sandstone, conglomerate, mudstone, minor coal

## JURASSIC AND CRETACEOUS

Lower Cretaceous

**8** Brian Boru Formation - predominantly porphyritic andesite flows

Upper Jurassic and Lower Cretaceous

**7** Greywacke, siltstone, mudstone, conglomerate, and minor coal.  
7A, John Brown sedimentary member - quartz and chert pebble conglomerate, sandstone, and siltstone; 7B, Rocky Ridge sedimentary member - greywacke, siltstone, mudstone, minor conglomerate and coal. (7A and 7B may be Middle Jurassic)

## JURASSIC

Middle Jurassic or Younger

**6** Predominantly basaltic and andesitic flows, tuffs and breccias

Middle Jurassic and (?) Lower Jurassic

**5** Greywacke, siltstone, mudstone, tuffaceous greywacke, and minor conglomerate

Lower Jurassic and (?) Middle Jurassic

**4** Predominantly red, purple, grey, and green andesitic to rhyolitic tuffs, breccias, and flows. Minor intercalated sedimentary rocks

## TRIASSIC AND OLDER?

**3** Predominantly mafic volcanic rocks with some limestone, limestone conglomerate, greywacke, and chert

## INTRUSIVE ROCKS

### UPPER CRETACEOUS AND EARLY TERTIARY

**2** Quartz monzonite, granodiorite, quartz diorite, and porphyritic or fine-grained equivalents. Predominant textures - 2G-granitic; 2P-porphyritic; 2F-felsitic; 2B-gabbro.

### JURASSIC AND (?) CRETACEOUS

**1** Quartz monzonite, granodiorite, quartz diorite, porphyritic in part. Minor diorite and monzonite

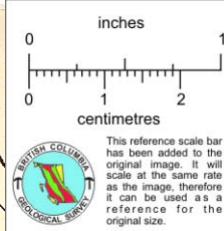
Geological boundary, defined, approximate, assumed

Bedding, inclined, horizontal, vertical

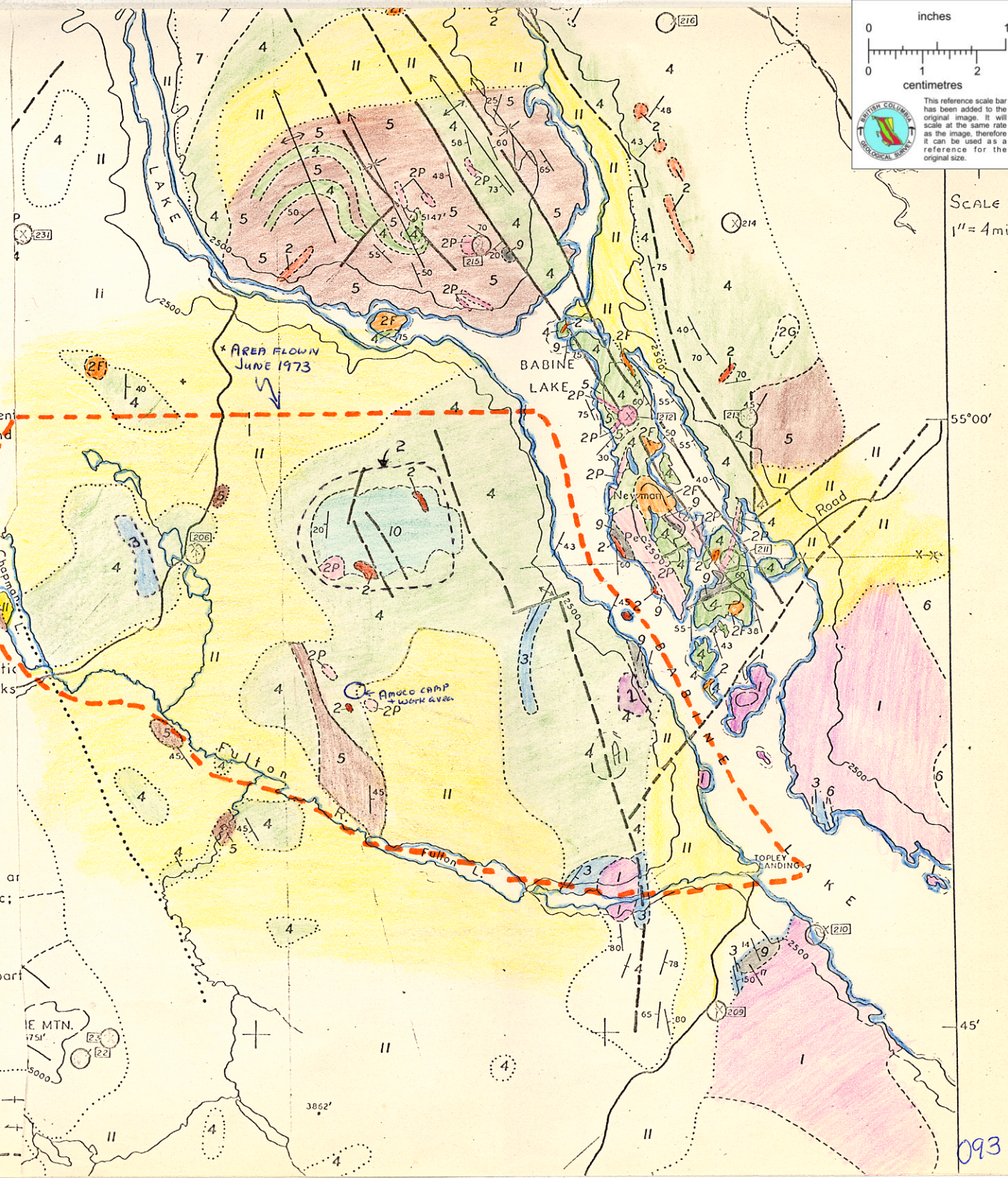
Cleavage and schistosity

Fault, defined, assumed

822419



SCALE  
1" = 4 miles



093