

**INTRODUCTION**

SAM GOOSLY is the name given to a recently discovered copper-silver deposit 22 miles (35 km) south of Houston, B.C., currently being investigated by Kenneco Ex-

plorations. It is situated on a timber-covered upland of gentle relief at an elevation of 4300 feet (1300 m) and is accessible by motor road from Houston. This paper will discuss the mode of discovery, the geologic setting and the style of mineralization, and

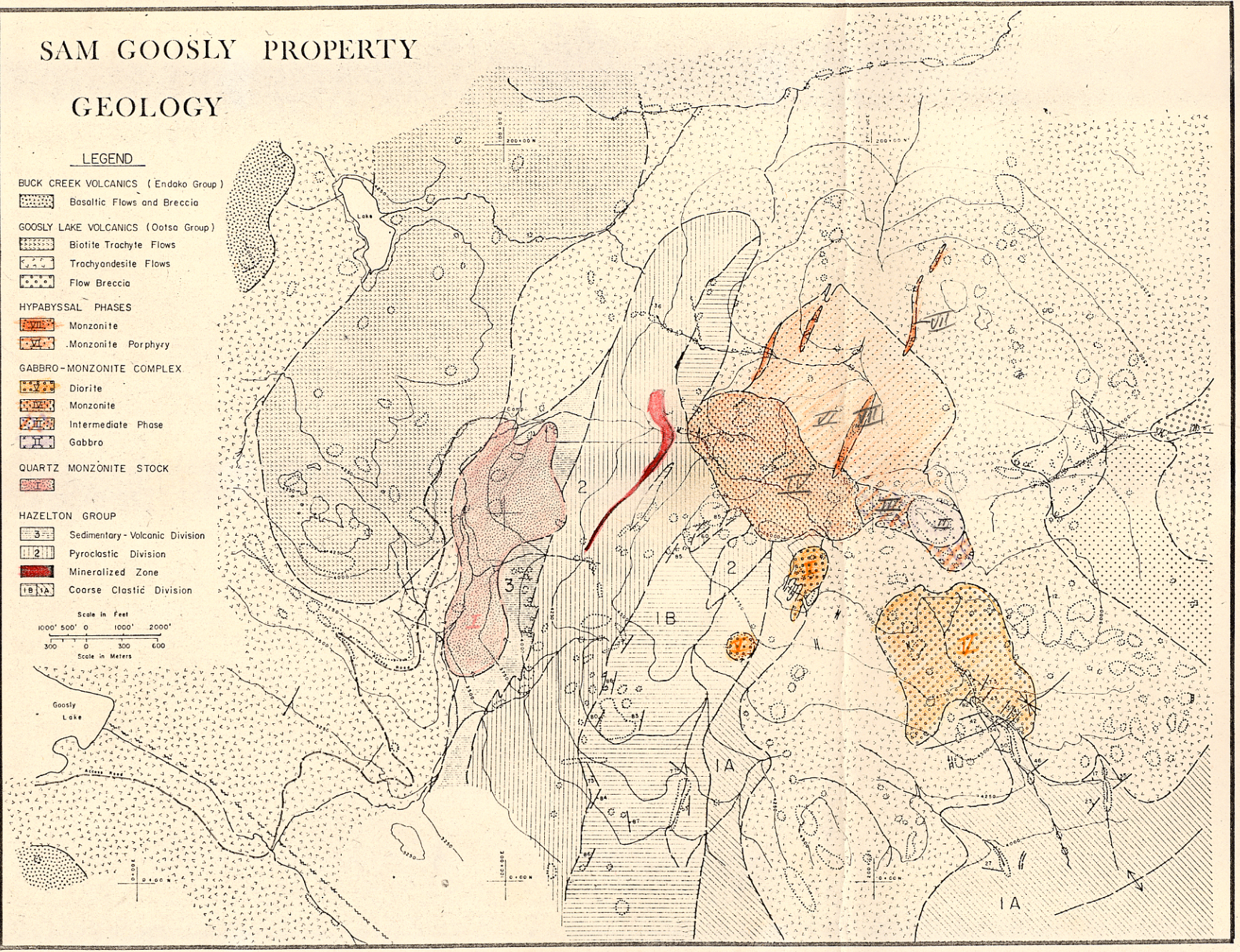


FIGURE 2 — Geology.