

822387

93D

SEP 29 1967

KERR ADDISON MINES LIMITED

(FOR INTER-OFFICE USE ONLY)

of bc. (7)

To P. M. Kavanagh From W. M. Sirola

Subject Ramsey Creek Group - Aeromagnetic Pattern Date September 27, 1967

W.S.P.
K.C.G.
J.H.S.
EF.
R.D.S.
B.C.B.
P.M.K. ✓
G.W.M.
R.O.M.
C.K.W.
J.B.S.
G.P.R.
K.F.L.
(E.C.J.)

The enclosed sketch clearly illustrates that the area of interest on Groyd Creek is in a relative magnetic low. It is highly suggestive of an intrusive which has broken through the volcanics and which is probably mineralized along its periphery.

By now we will probably have staked the other magnetic low shown to the northeast of the Wilf Group.

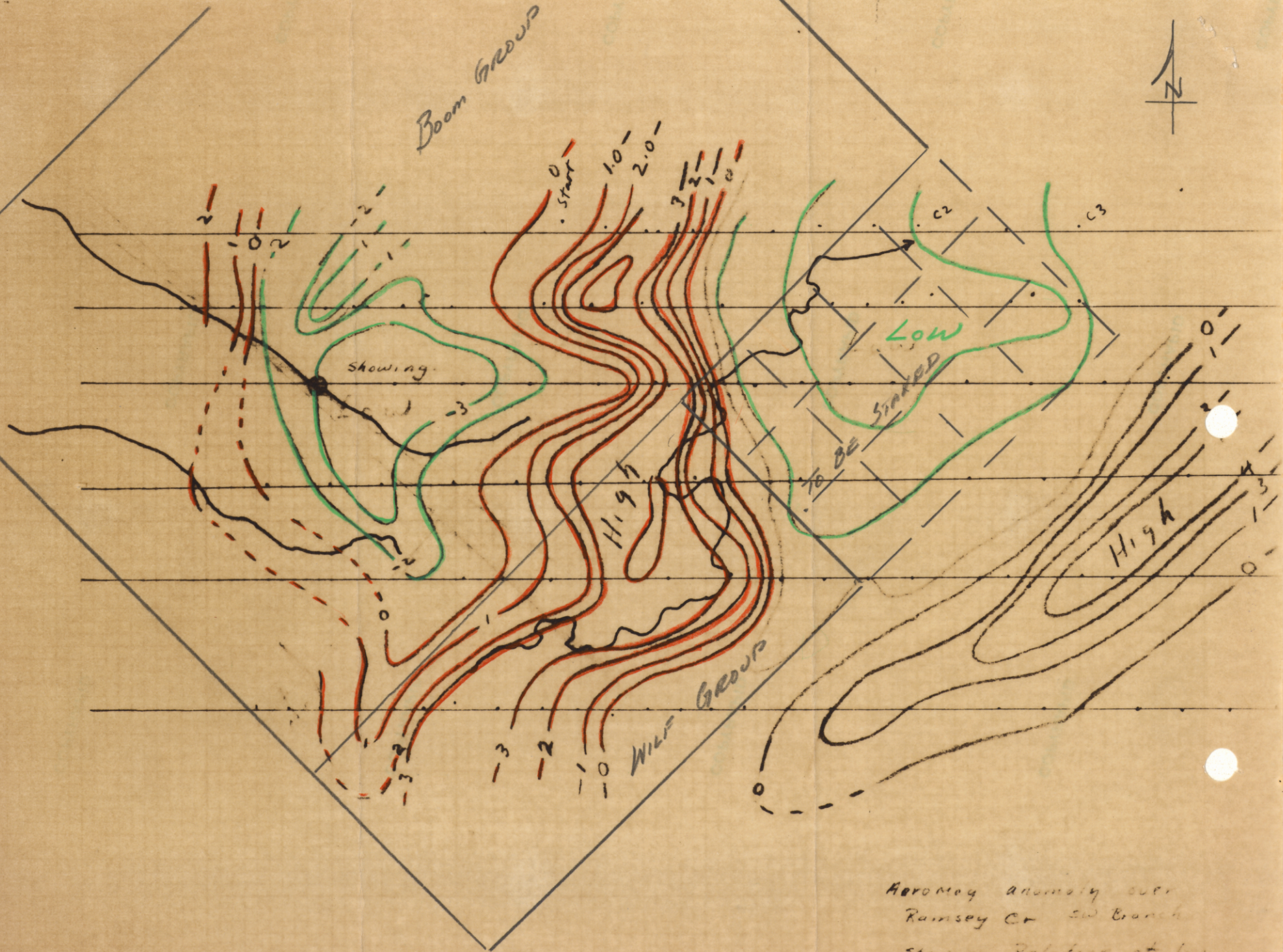
Because the I.P. effects appear to correlate with increased magnetism, the aeromagnetic pattern explains the buildup of I.P. effects to the north, south, east and west of the I.P. grid.

It would be difficult to explain the magnetic low on Groyd Creek as being caused by a less magnetic series of lava flows because it would take intense folding to produce the observed aeromagnetic pattern. It is much easier to visualize an intrusive breaking through at that point.

Bill

W. M. Sirola.

WMS/1k
Encl.



Aeromag anomaly over
 Ramsey Cr SW Branch
 Showing Relation of Low
 to Copper Showing

(Aug. 1967) Scale ~ 2000' = 1". JCL