

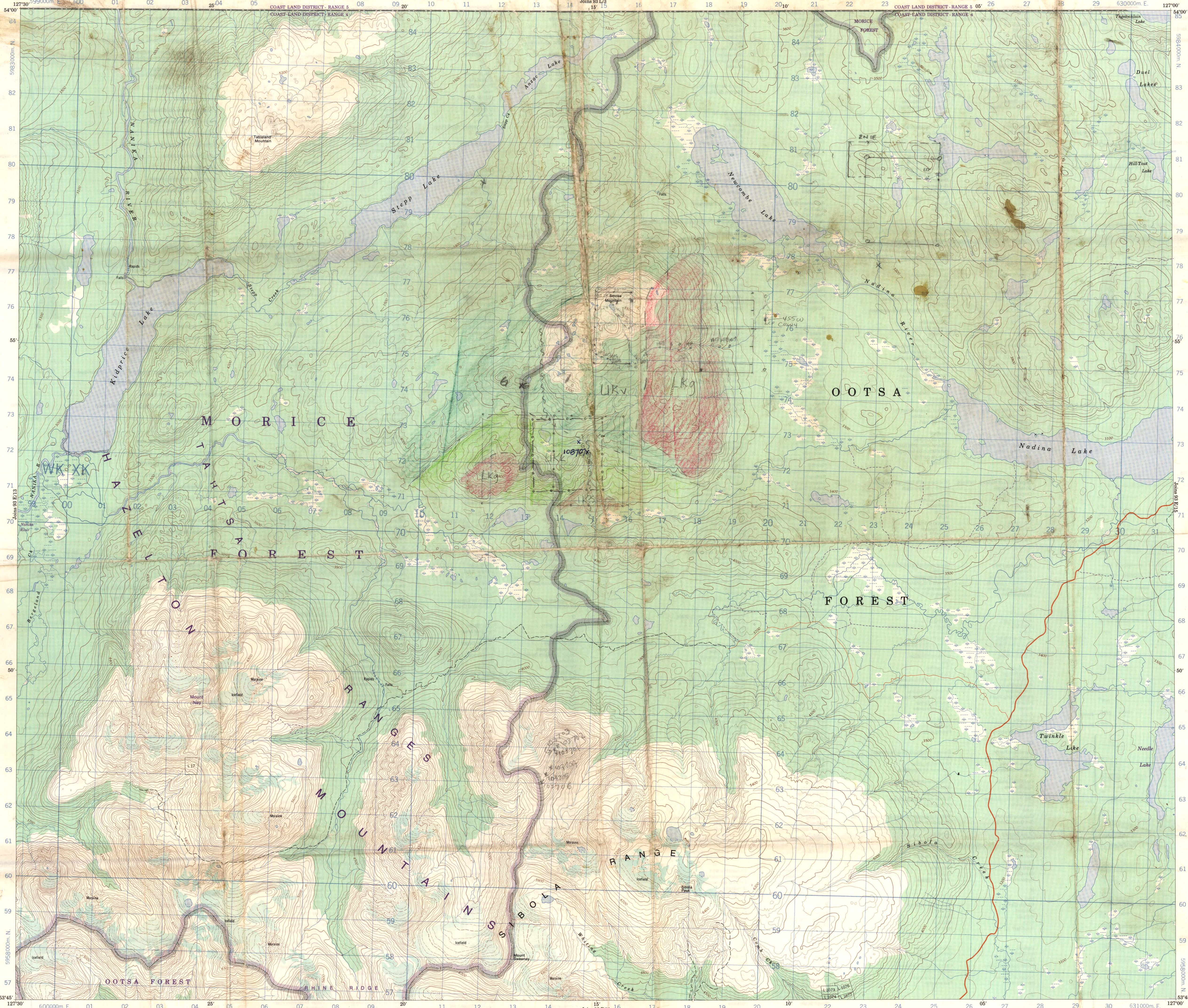
93 E/14

1:50 000

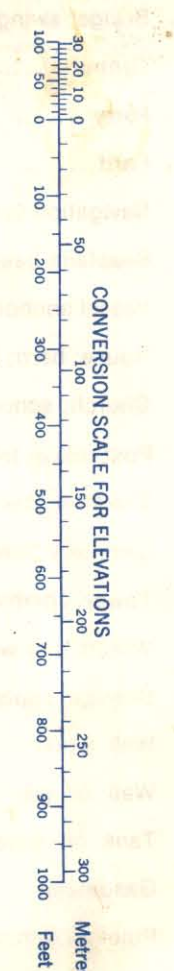
CANADA

EDITION 2

93 E/14

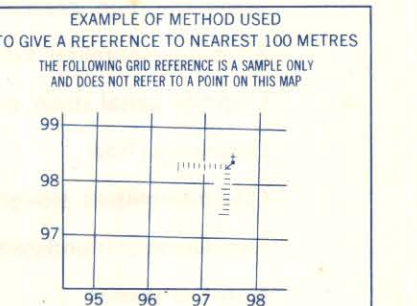
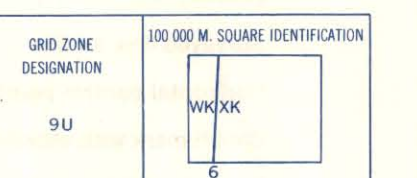


Refer to this map as: 93 E/14  
EDITION 2 MCE  
SERIES A 721



Use diagram only to obtain numerical values.  
APPROXIMATE MEAN ELEVATION: 1380  
FOR CENTRE OF MAP  
Annual change decreasing 11"

ONE THOUSAND METRE  
UNIVERSAL TRANSVERSE MERCATOR  
GRID  
ZONE 9



REFERENCE POINT	CHURCH (see above)
EASTING: Road number on grid line immediately to left of point	97
Estimated width of a road from this line assumed to point	5
NORTHING: Road number on grid line immediately below point	98
Estimated width of a lake from this line northward to point	1

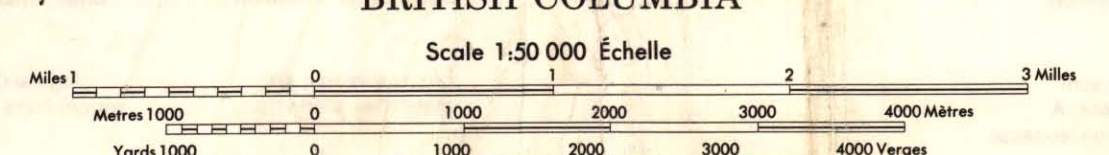
EXAMPLE MILITARY GRID REFERENCE: 075984  
Nearest similar grid reference 100 000 metres (about 62 miles)

Published 1964, by the SURVEYS AND MAPPING BRANCH, DEPARTMENT OF ENERGY, MINES AND RESOURCES, from aerial photographs taken in 1961. First survey 1961. Printed 1971.  
This map was compiled with aerial photography taken in 1970 and based on the data of all major features.  
Copies may be obtained from the Canada Map Office, Department of Energy, Mines and Resources, Ottawa, at your nearest map dealer.  
© 1980 Her Majesty the Queen in Right of Canada, Department of Energy, Mines and Resources.

**ROADS - ROUTES**  
hard surface - pavée  
loose surface - de gravier  
cart track - de terre  
trail - sentier  
Deletions - Suppressions

**Roads**  
loose or stabilized surface, all weather  
loose surface, dry weather and unsealed streets  
cart track  
trail or portage

**Routes**  
gravel aggloméré, toute saison  
de gravier, temps sec et route hors classe  
de terre  
sentier ou portage

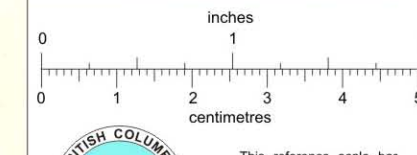


CONTOUR INTERVAL 100 FEET  
North American Datum 1927  
Transverse Mercator Projection

822357

EQUIDISTANCE DES COMBES 100 PIEDS  
Élevations en pieds au-dessus du niveau moyen de la mer  
Système de référence géodésique nord-américain, 1927  
Projection transverse de Mercator

Établi en 1964, par la DIRECTION DES LEVÉS ET DE LA CARTOGRAPHIE, MINISTÈRE DE L'ÉNERGIE, DES MINES ET DES RESSOURCES, à partir des photographies aériennes prises en 1961, sur le terrain en 1961, et imprimé en 1971.  
Ce cartage est basé sur des photographies aériennes prises en 1970, avec ajout de toutes les caractéristiques principales observées.  
Des cartes sont en vente au Bureau des Cartes du Canada, Ministère de l'Énergie, des Mines et des Ressources, Ottawa, au prix de 100 centimes par copie.  
© 1980, Sa Majesté la Reine en Chef du Canada, Ministère de l'Énergie, des Mines et des Ressources.



This reference scale bar has been added to the original image. It will work as the scale bar on the map. It is not to be used as a reference for the original image.

93 E/14  
EDITION 2