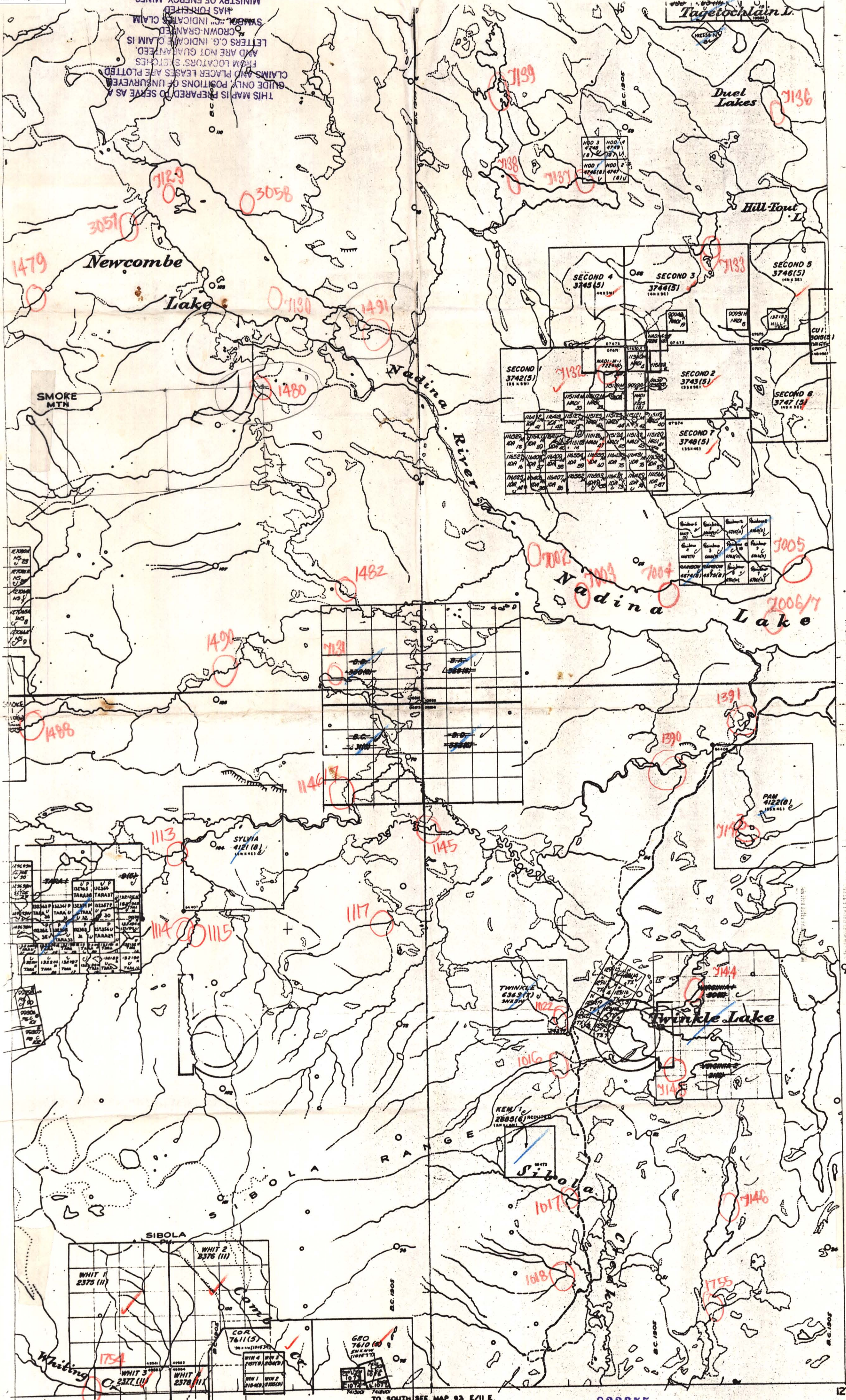


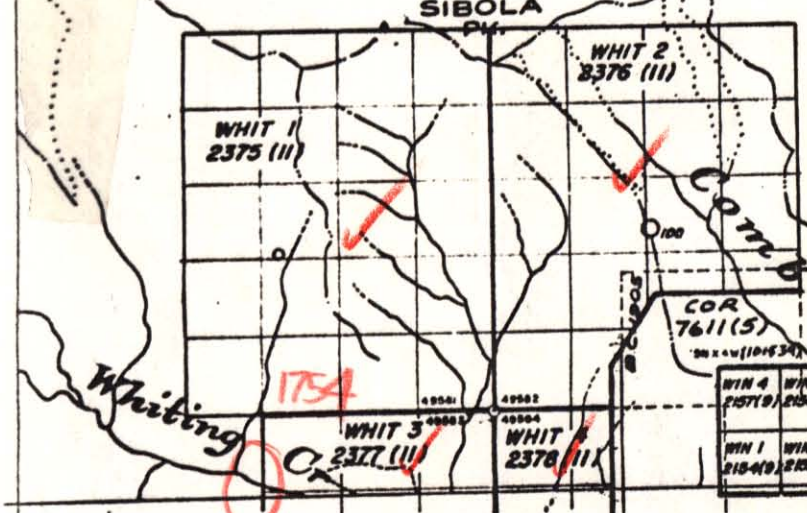
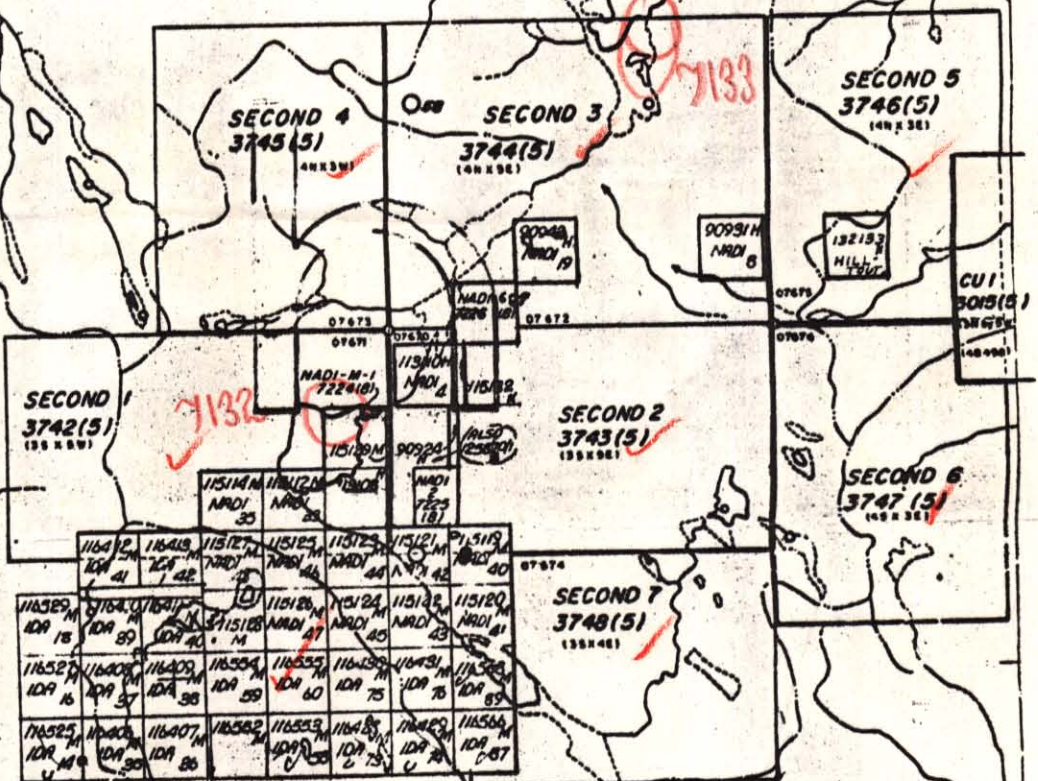
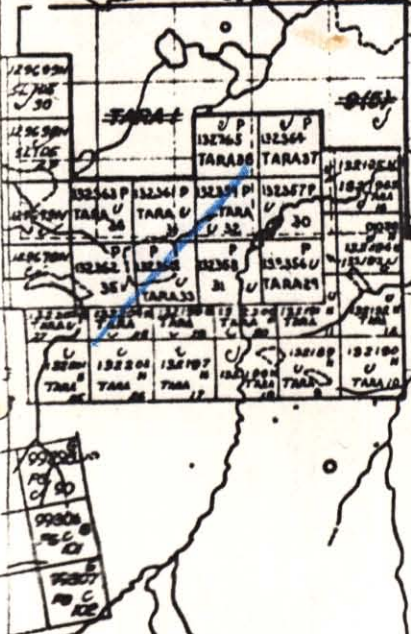
HE
1492 side 5

14E

THIS MAP IS PREPARED TO SERVE AS A GUIDE ONLY. POSITIONS OF UNSURVEYED CLAIMS AND PLACER LEASES ARE PLOTTED FROM LOCATORS' SKETCHES AND ARE NOT GUARANTEED. LETTERS C.G. INDICATE CLAIM IS CROWN-GRANTED. SYMBOLS INDICATE CLAIM HAS FORGOTTEN. MINISTRY OF ENERGY, MINES AND PETROLEUM RESOURCES



EXBON NO. 20
EXBON NO. 21
EXBON NO. 22
EXBON NO. 23
EXBON NO. 24
EXBON NO. 25



27 15' OMNECA MINING DIVISION

TO SOUTHSEE MAP 93 E/11 E.

822355

TO EAST SEE MAP 93 E/15 W

- International Boundary
- Provincial Boundary
- Mining Division Boundary
- City or Municipal Boundary
- Indian Reservation
- Surveyed Boundary
- Unsurveyed Boundary
- Mineral and Placer Reserve
- Ecological Reserve
- Park Boundary
- Recreation Area Boundary
- Bridge
- Tunnel
- Power Transmission Line
- Pipeline
- Stream
- Ditch, canal, flume
- Dam
- Rapid, Falls
- Boundary, swamp, flat trap

DEPARTMENT OF MINES AND PETROLEUM RESOURCES

VICTORIA B.C.

SCALE 1/8 MILE = 1 INCH

This map is prepared only as a guide to the location of mineral claims and Placer Mining Leases as shown on the locator's sketches. For current or more specific information, application should be made to the Mining Division concerned.

Map prepared by 1162