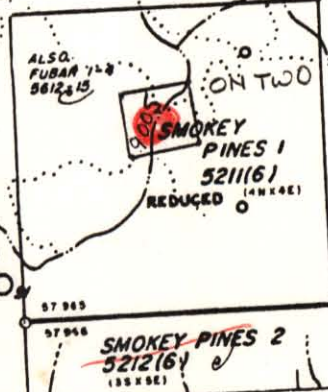
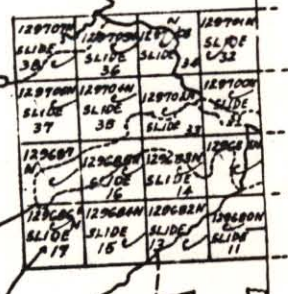
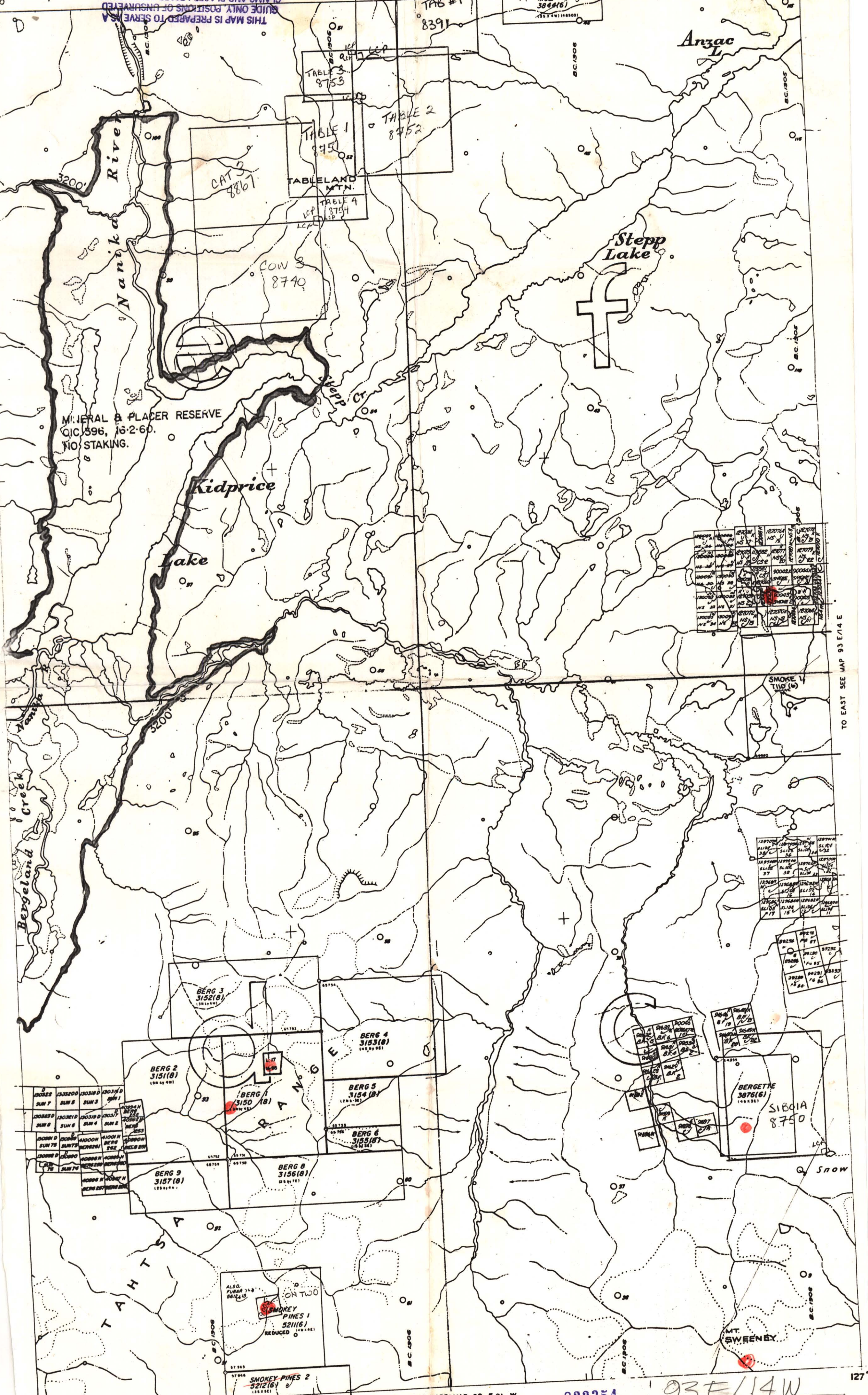


MINISTRY OF ENERGY, MINES AND PETROLEUM RESOURCES
HAS FORGOTTEN
TO INDICATE CLAIM
LETTERS AND PLACER MINING
AND LOCATOR SKETCHES
FROM LOCATOR'S CLAIM IS
GUIDE ONLY POSITIONS OF UNREGISTERED
CLAIMS AND PLACER MINING LEASES ARE PLOTTED
THIS MAP IS PREPARED TO SERVE AS A

TO NORTH SEE MAP 93 L/3 W

127 15
34 0



TO SOUTH SEE MAP 93 E/1 W

822354

93 E/14 W

127

127 30 OMINECA MINING DIVISION

- International Boundary
- Provincial Boundary
- Mining Division Boundary
- City or Municipal Boundary
- Indian Reservation
- Bridge
- Tunnel
- Power Transmission Line
- Pipeline
- Stream, perennial
- Stream, intermittent

DEPARTMENT OF MINES AND PETROLEUM RESOURCES

VICTORIA B.C.

This map is prepared only as a guide to the location of mineral claims and Placer Mining Leases as shown on the locator's sketches. For current or more specific information, application should be made to the Mining Division concerned.