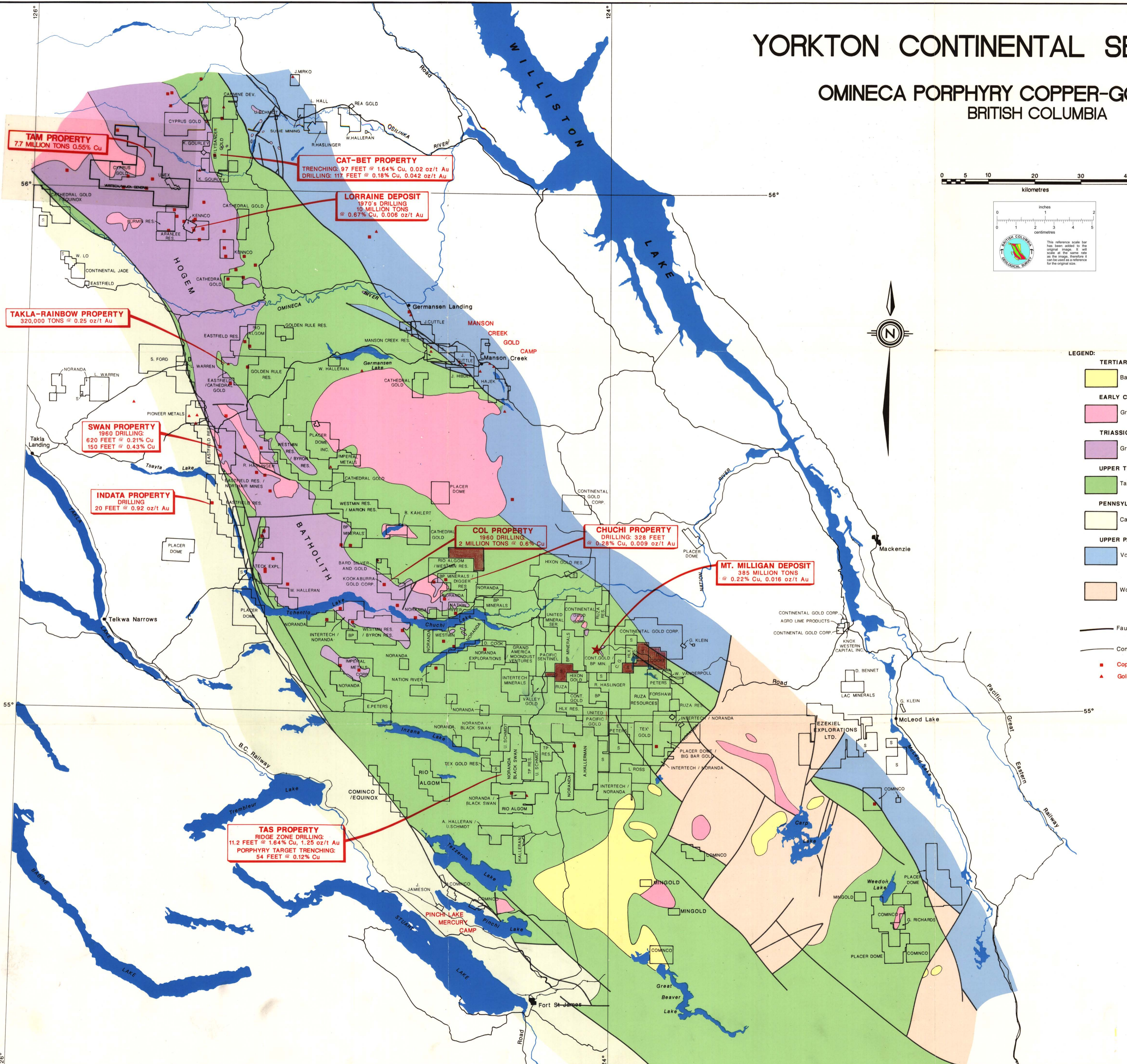


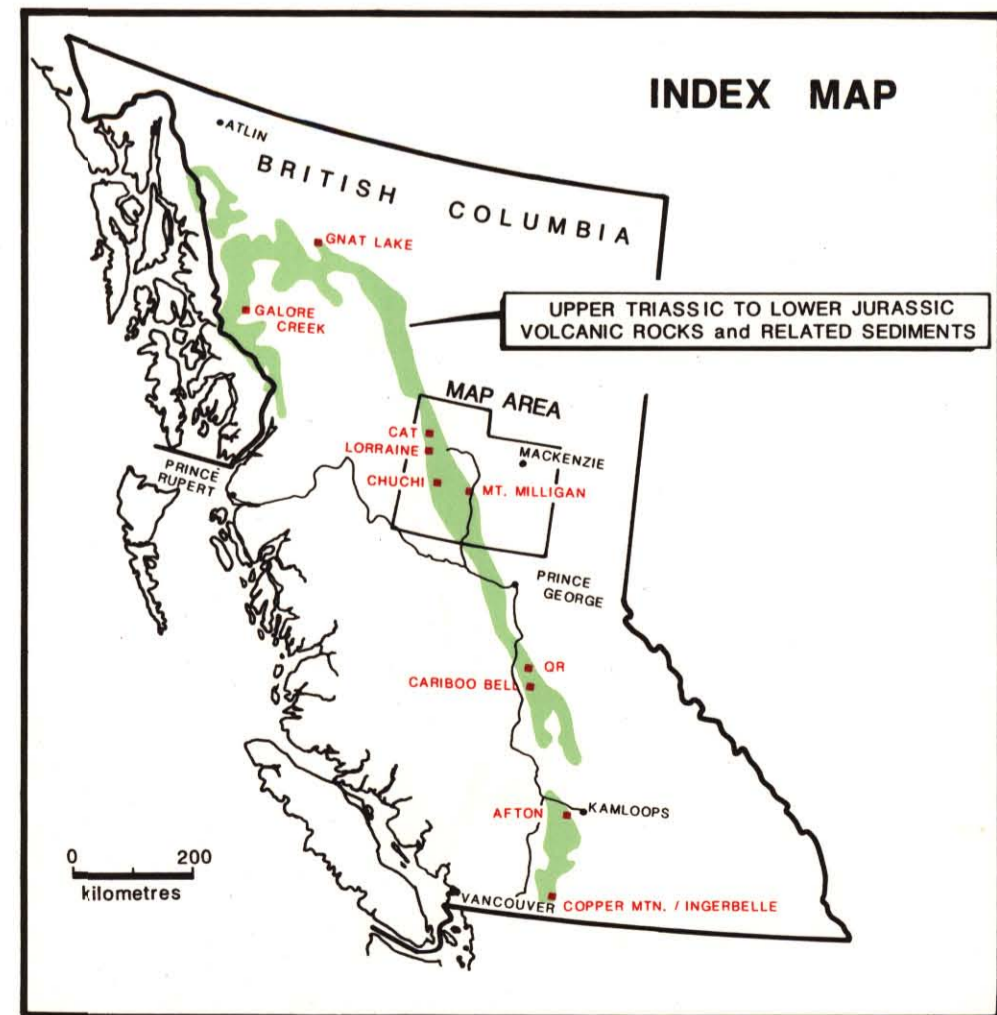
YORKTON CONTINENTAL SECURITIES INC.

OMINECA PORPHYRY COPPER-GOLD DISTRICT BRITISH COLUMBIA



- LEGEND:**
- TERTIARY**
 - Basalt
 - EARLY CRETACEOUS**
 - Granodiorite, granite
 - TRIASSIC-JURASSIC**
 - Granodiorite, quartz monzonite, syenite, diorite, monzonite
 - UPPER TRIASSIC-LOWER JURASSIC**
 - Takla Group volcanics and related sediments
 - PENNSYLVANIAN-PERMIAN**
 - Cache Creek Group
 - UPPER PALEOZOIC**
 - Volcanics, sediments
 - Wolverine Metamorphic Complex, Proterozoic sediments
 - Fault
 - Contact
 - Copper occurrence
 - Gold occurrence

This map has been compiled from information believed to be reliable. Actual locations and ownership are not guaranteed.



PRINTED IN CANADA MAY, 1990

9304 Lac + lake claims Mt. Milligan area Property Submission 822094