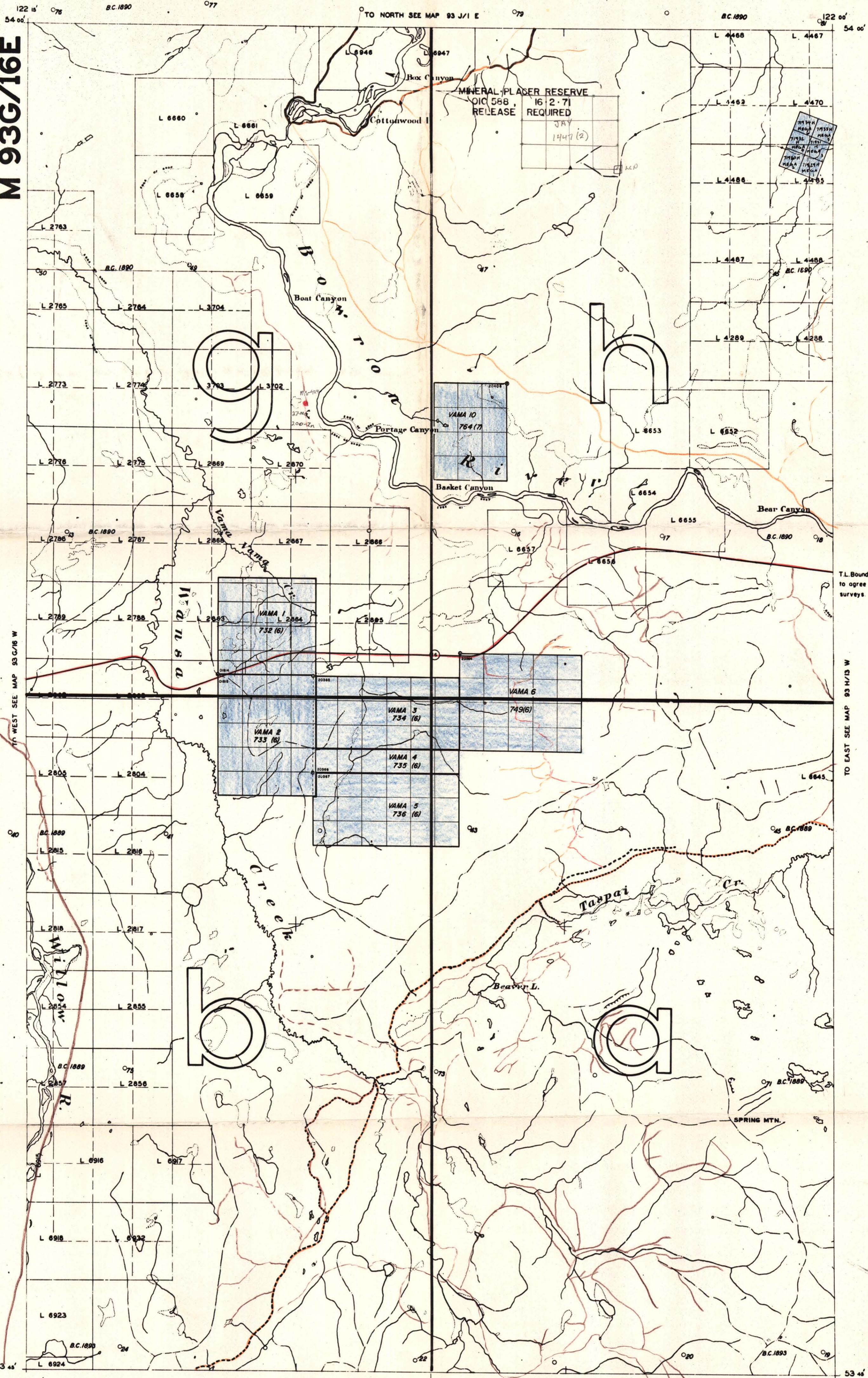


M 93G/16E



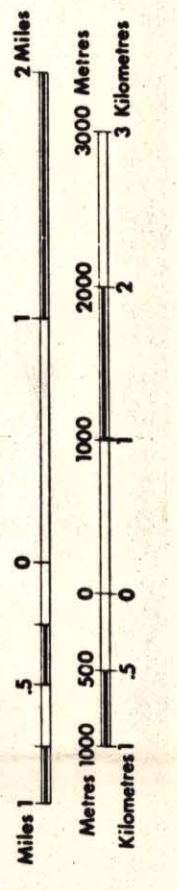
122 00' 078 BC.1890 077 TO NORTH SEE MAP 93 J/1 E 079 BC.1890 122 00' 081

TO WEST SEE MAP 93 C/16 W 076 BC.1889 075 TO EAST SEE MAP 93 H/13 W 078 BC.1889 077

122 00' 078 BC.1890 077 TO SOUTH SEE MAP 93 O/16 E 079 BC.1890 122 00' 081

T.L. Boundaries adjusted to agree with ties to lot surveys.

UNLESS VERIFIED OR SURVEYED, THE MAP POSITION OF A LEGAL CORNER POST IS BASED ON THE LOCATOR'S SKETCH. FOR FURTHER INFORMATION, APPLY TO THE OFFICE OF THE MINING DIVISION CONCERNED. DATE OF MICROFILM: July 27, 1978 50-03-06



LEGEND

- CROWN-GRANTED MINERAL CLAIM
- REVERTED CROWN CLAIM
- VERIFIED LEGAL CORNER POST
- LEGAL SURVEY
- LEGAL CORNER POST & TAG NUMBER

122 00' 078 BC.1890 077 TO SOUTH SEE MAP 93 O/16 E 079 BC.1890 122 00' 081

822021 93G Wansa Creek

