

PM property
093B/13

821835

PM
52°56' 123°40'

93B/13

Assessment Data

Year	Assessment Report #	Work Done
1984	13,206	Soil Sampling, Stream Sediment Sampling, Rock Sampling

Work Done

32 rock samples
27 stream sediment samples
914 soil samples

General Geology

Tertiary Endako Group: ands-bslt volcanics
Lower Cretaceous Skeena Group: Quartz and chert pebble conglomerate occassionally interbedded with sandstone and greywacke

Property Geology

Conglomerate

Rounded-sub-rounded cobbles (1-10cm): chert and quartz vein (60-70%), mafic volcanics (20-25%), sandstone (0-15%)
Matrix: sandy, moderately clay altered
Pervasive weak to moderate clay alteration of fine-medium grained conglomerate
Limonitic and hematitic altered and carbonate stainings along fracture planes
Moderate fractured and faulted
May be interbedded with greywacke and sandstone (10-30cm width)

Endako Group

Massive, weakly siliceous basaltic flow cap surrounded by basaltic agglomerates, tuffs and lapilli breccias (forms a prominent hill) -->Volcanic Cone

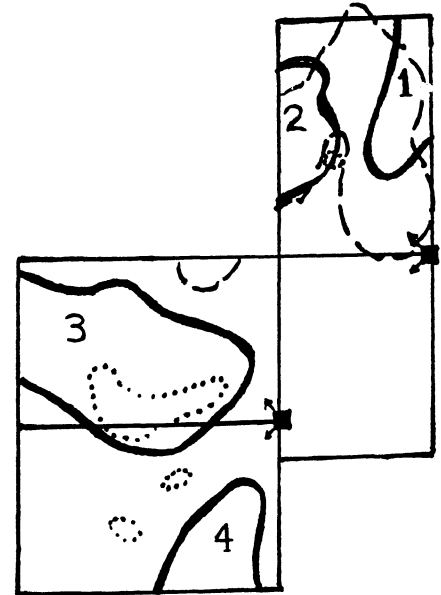
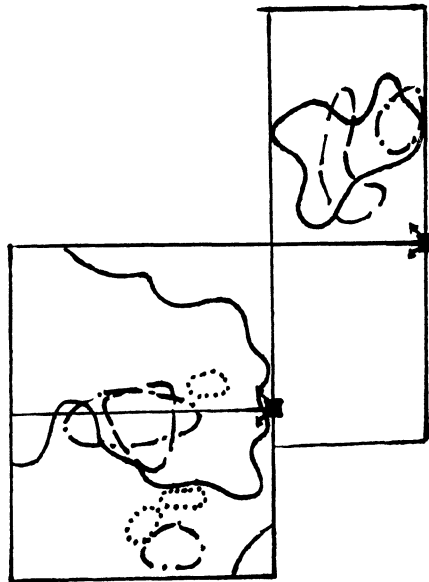
Results

see following diagram

Miscellaneous

Poor rock exposure (<2%)
"No further work is recommended"

SOILS

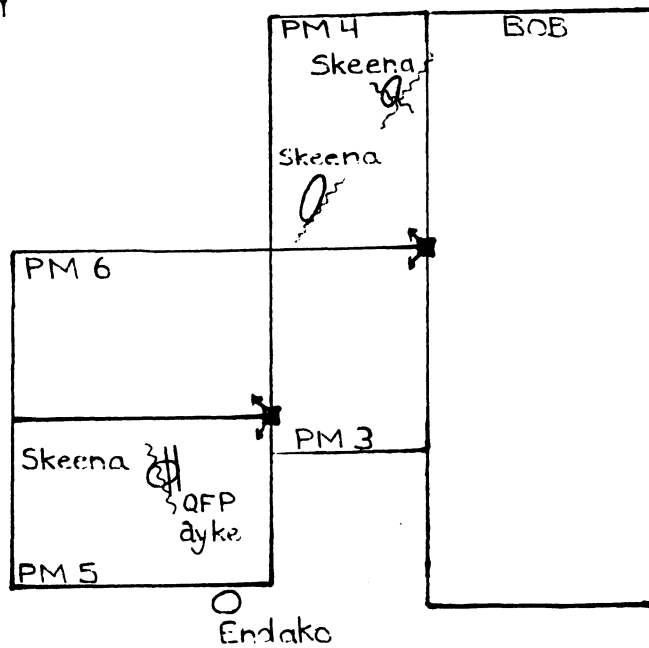


- Cu Anomalies
- Pb Anomalies
- Zn Anomalies
- Au Anomalies
- Ag not Anomalous

- As Anomalies
- Hg Anomalies

1. Ni, Cr, Mg, Ba (V, Fe, Al, Ti, Mn)
2. Fe, V, Mg, Ba, P, Zn, Co, Al
3. Zn, Fe, Co, Ni, Cr, V, Ti, Sr, Ba, Mg, Al, P, (Mn)
4. P, Ni, Mg, Al

GEOLOGY



13206

PM Claims
52° 56' N
123° 40' W

1984
93B/13
Geol
Geochem

soil sampling, stream sed sampling + rx sampling

poor rx exposure (42%)

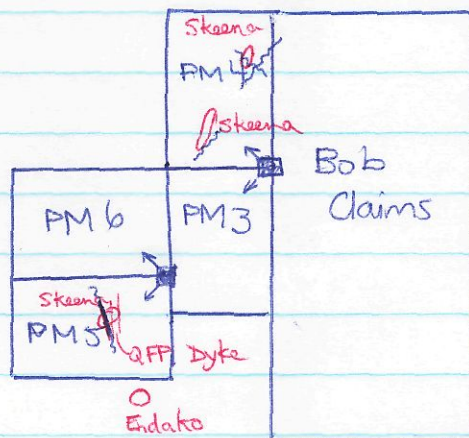


Figure 3
- get a printout
(regional geol map).

Property geology:

Tertiary Endako Gp. and-bstt volc.

lower Cretaceous Skeena Gp. qz + chert pebble cong,
occas. interbedded w/ sst + grywcke

Cong - rounded - subrounded cobbles (4-10cm): chert + qzn (60-70%)
maf vol. 20-25%
ss 0-15%

- matrix: sandy, moderately clay alt.
- mod. Fractured + Faulted.
- limonitic + hematitic alt, + carbonate stainings along frac. planes
- may be interbedded with grywcke + sst (10-30 cm width)
- pervasive, weak-mod clay alt of fg-mg cong.

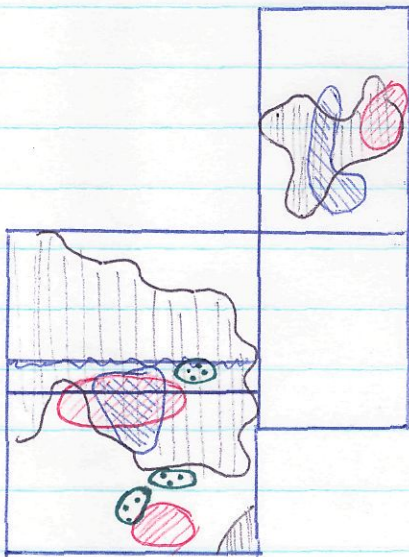
13206 cont.

Endako Gp

- massive, wkly siliceous basaltic Flow cap surrounded by basaltic agglomerates, tuffs + lapilli breccias (forms a prominent hill)

→ volcanic cone

Soils



● - Cu Anomalies

● - Pb Anomalies

● - Zn Anomalies

☺ - Au Anomalies

Ag not anomalous



● - As anomalies

● - Hg anomalies

1 Ni, Cr, Mg, Ba (V, Fe, Al, Ti, Mn)

2 Fe, V, Mg, Ba, P, Zn, Co, Al

3 Zn, Fe, Co, Ni, Cr, V, Ti, Sr, Ba, Mg, Al, P, (Mn)

4 P, Ni, Mg, Al

"no further work is recommended"