

CORPORATE DATA

Officers and Directors

ROBERT A. DICKINSON, President
MURRAY McCLAREN, Vice-President, Exploration
TAD F. van WOLLEN, Vice-President, Engineering
JAMES J. McDOUGALL, Director

Head Office

701 - 744 West Hastings Street
Vancouver, British Columbia
V6C 1A5

Bank

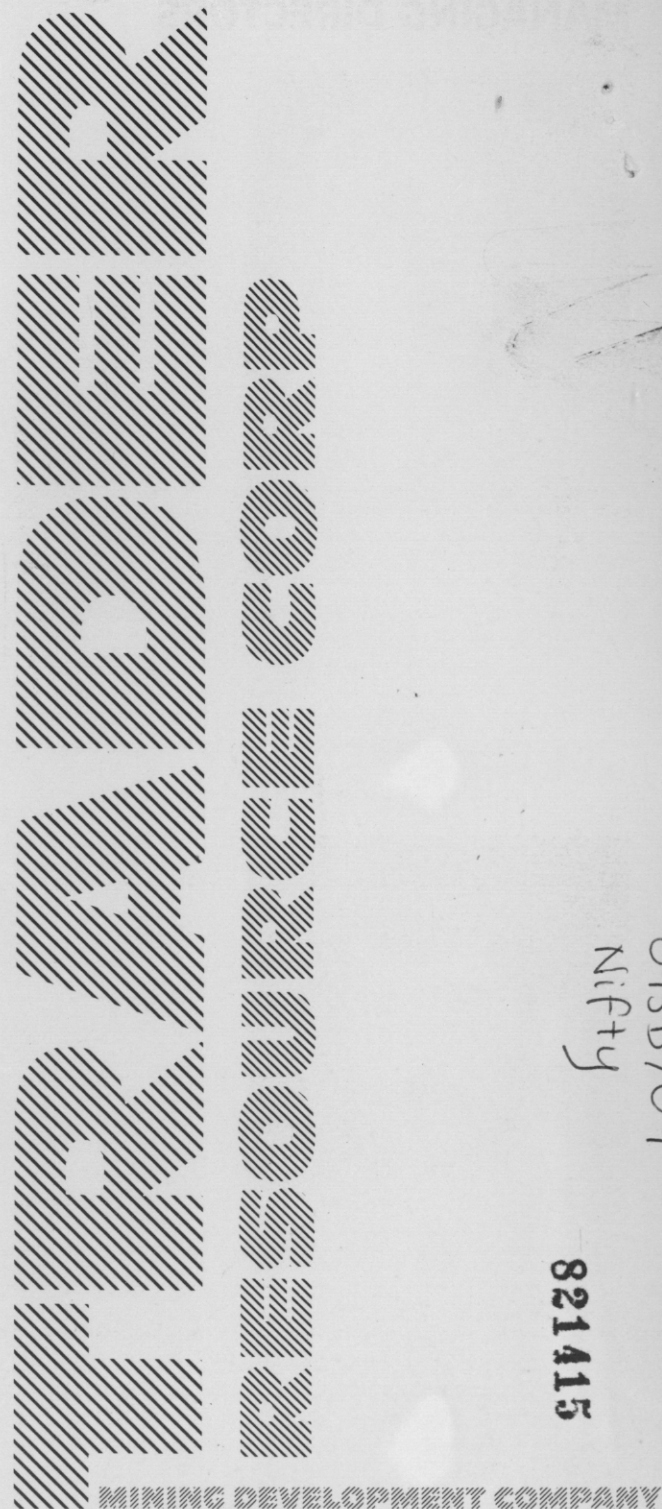
Canadian Imperial Bank of Commerce
Vancouver, British Columbia

Solicitors

Rand & Edgar
400 - 750 West Pender Street
Vancouver, B.C.
V6C 2T7

Auditors

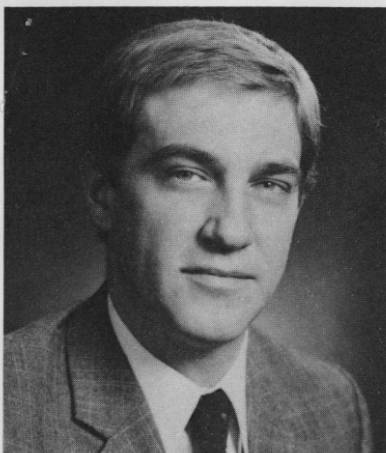
Coopers & Lybrand
Vancouver, British Columbia



093D/09
Nifty

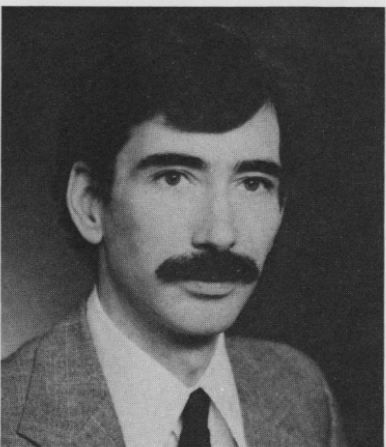
821415

MANAGING DIRECTORS



ROBERT A. DICKINSON, B.Sc., M.B.A.

has a 17 year career in mineral exploration, development, operation and financing. Educated in both finance and geology he has been associated with the evaluation of numerous North American mining projects. Using a wide variety of financial techniques he has successfully completed the financing of significant mining ventures.



MURRAY McCLAREN, B.Sc.

for 19 years has been associated with several major mining companies participating in the discovery and development of mineral deposits. Having an advanced knowledge of geochemical, geophysical and geological techniques he specializes in the appraisal of the various mineral deposit environments found throughout North America.

TRADER RESOURCE CORP.

A mining development Company based in Vancouver, British Columbia, with its operations in Canada and the western United States.

The main objective of the Corporation is the acquisition and development of economically viable mineral deposits, with emphasis on precious metals and strategic minerals.

Distinctive features of the Corporation, essential to the successful development of a prospect into a profitable mine, are:

- The professional skills of its managing directors, tempered with practical experience, which encompass all aspects of geology, engineering and finance.
- Access to financial sources for appropriate mining projects.
- A flexible corporate structure which can quickly respond to changes in the dynamic and volatile mining industry.
- A high ratio of field to overhead expenditure achieved by combining management skills with the necessary technical expertise and staff on a project basis.

TRADER RESOURCE CORP. is confident that investment in precious and strategic metals, combined with professional management, will maximize the potential for Company growth.

We cordially invite, and welcome, inquiries.

TRADER RESOURCE CORP.

MANAGING DIRECTORS



JAMES J. McDOUGALL, B.A., M.Sc., P.Eng.

for 30 years has been associated with the Ventures-Falconbridge group of companies for whom he was most recently employed as manager of Cordilleran Exploration. He has been active in reconnaissance exploration throughout much of B.C., the Yukon and Alaska and was instrumental in the discovery and development of several major deposits.



TAD F. van WOLLEN, M.Sc., P.Eng.

has 17 years dedicated to the design and construction of mining and heavy industrial projects throughout the world. He is experienced in complete management of operating mines, and specializes in control of integrated engineering disciplines to assure development of projects on schedule and within budget.

TO _____
PLACE _____

FROM _____
PLACE _____
DATE _____

1M-MP-1056

(1K)

Have Watkins: (cc Alex)

Enclose ^(leaving) a file of massive sulphide data on 2 ^{'lost mine'} areas in B.C.

(1) - South end of the Morrison Lake

Zone - U.S. side (incl 2 samples)

(2) " " " Canadian side (Church Mts)

also (3)

Some data on holdings near Bella Coola

Submitted thru me by the Demac - Trader Resource Group who know quite a bit about them and may retain an interest in some. Phone Mc Laren or Dickinson if you want to discuss further (685-0696)

JDM.

6
①

Redburn Project 1977, 78, 79.

TAN Claims. Geology + DD. Lorraine

IP Report.

Smotheringale Rept.

VLF, Mag Rept

Maps.

Assessment Repts.

Keen + ^{Nifty} Claims

4 Rio Coronet. Rept

5 Pan Ocean. Rept

Misc Maps + Logs.