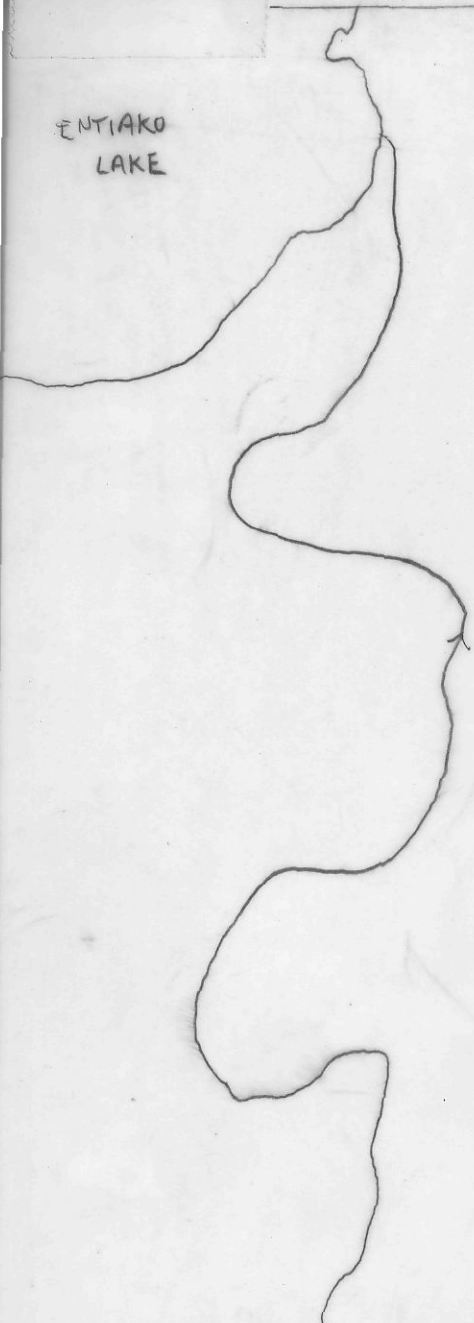


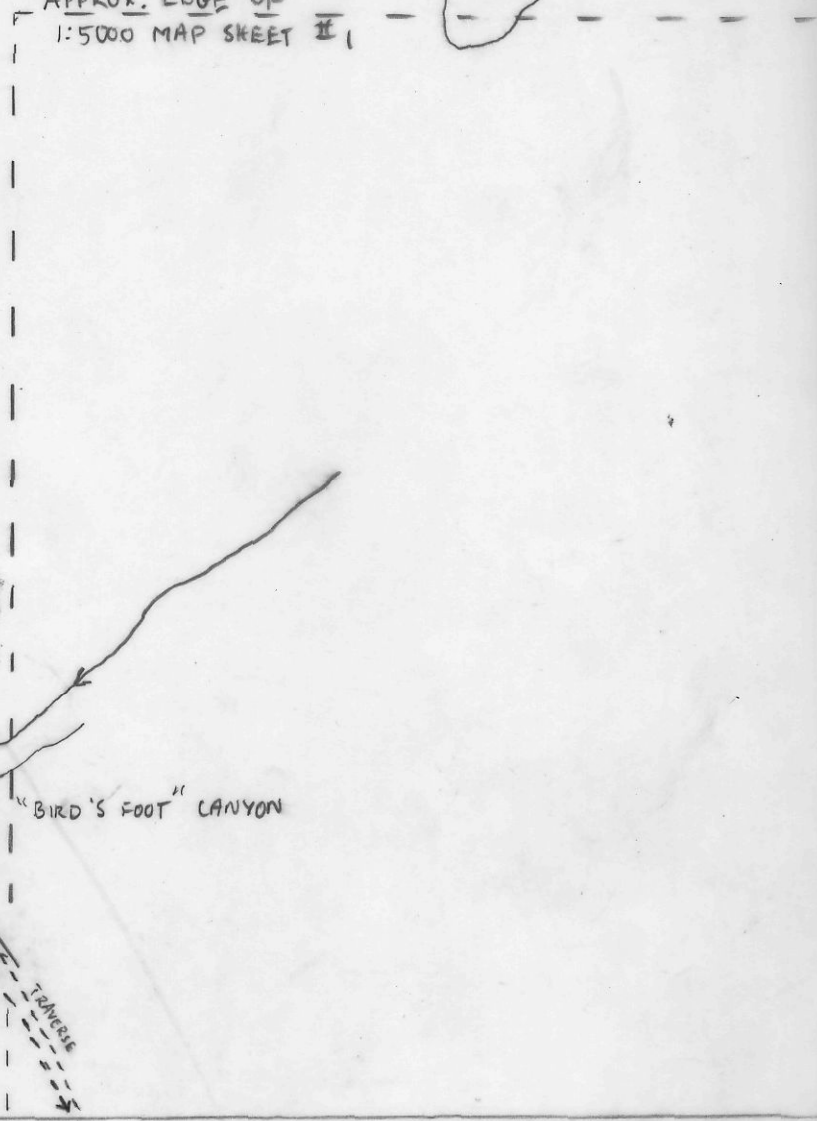
BC4281-176  
S. BLOWER +  
L. KELLY  
JULY 14/93



ENTIAKO  
LAKE



APPROX. EDGE OF  
1:5000 MAP SHEET II



SWAMP

"BIRD'S FOOT" CANYON

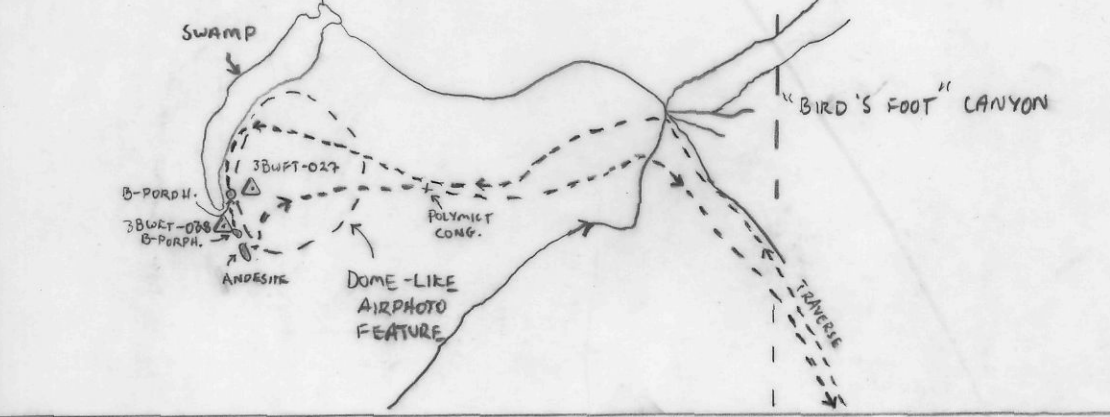
B-PORPH.  
3BWT-022  
B-PORPH.

3BWT-022  
ANDESITE

POLYMET  
CONG.

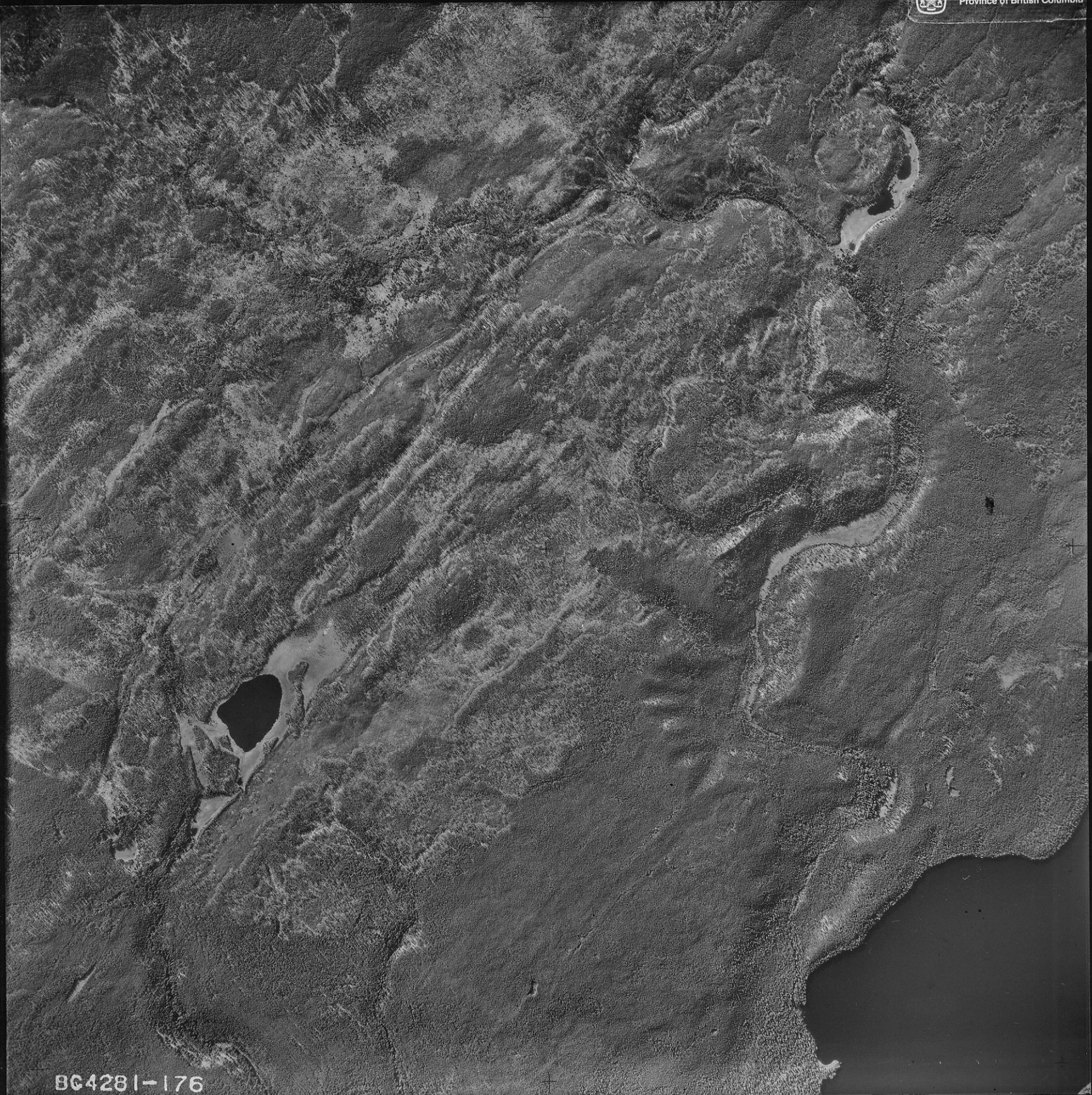
DOME-LIKE  
AIRPHOTO  
FEATURE

TRaverse





Province of British Columbia



BC4281-176

BC4281-176

BC4281-176 00  
S. BLOWER +  
L. KELLY  
JULY 14/93

ENTIAKO  
LAKE

N  
Z

APPROX. EDGE OF  
1:5000 MAP SHEET II

POND

SWAMP

"BIRD'S FOOT" CANYON

B-PORPH.

3BUPT-027

3BUPT-028

B-PORPH.

ANDERSH

POLYMET  
CONG.

DOME-LIKE  
AIRPHOTO  
FEATURE

TONNE

821397

093F/03  
WOLF