

821262

PROPERTY NAME: CANYON (HOUSTON)

PROPERTY/PROJECT DATA FORM

Date: Jan 16 86

ACTIVE FILE: Y or N

CLAIM NAMES: CANYON

LOCATION -

REGION: HOUSTON

PROVINCE/STATE: BC

N.T.S./Twp.-Rnge 93L7W

Lat/Long: \_\_\_\_\_

COMMODITY: Magnetite, Cu

OWNERSHIP -

Owner(s): Eric Shaede Ph.D

Contact: \_\_\_\_\_

Tel.No: 836 2125

Address: RR1 Sicamous BC  
JOE. 2ND

INITIATION -

Initiator: \_\_\_\_\_

Date: \_\_\_\_\_

Submittal:  Y or N

Solicitation: Y or N

STATUS -

Data Studied:  Y or N

Exam planned: Y or  N

Examined on: \_\_\_\_\_

By: \_\_\_\_\_

RECOMMENDATION -

Recommended: Y or  N

Toronto Approval: Y or N

Owner Notified: Y or  N

Report Written: Y or  N

LEGAL -

Underway: Y or N

Completed: Y or N

DATA -

Returnable: Y or  N

Returned: Y or N

File No: \_\_\_\_\_

File Location: \_\_\_\_\_

Monthly Reports: \_\_\_\_\_

Other Refs: \_\_\_\_\_

KEY QUESTION(s):

Previous work turned up?

CAPSULE DESCRIPTION (Incl.legal):

Massive Sulphate (Magnetite) with Cu  
and precious metal credits reported by  
Inspector. Values Au + Ag Not  
impressive.

RECEIVED  
NOV 15 1985  
KERR ADDISON MINES LTD.

R.R. #1,  
Sicamous, B.C.  
VOE 2VO  
November 12, 1985

Kerr Addison Mines Limited  
#703 - 1112 W. Pender Street  
Vancouver, B.C.  
V6E 2S1

Attention: Mr. A.D. Clendenan, Project Geologist

Dear Mr. Clendenan:

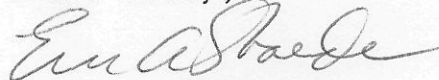
Re: Canyon Mineral Claim, 93L/7W

We have available for option the CANYON mineral claim located near Houston, B.C. and easily accessible via the Walcott Forest road. This property has numerous showings of magnetite with copper and precious metals values. We have enclosed a document package which outlines some of the features of the property.

If, after consideration of the enclosed information, you are interested in the property for your 1986 exploration season, then please contact the undersigned or Mr. Lorne Warren in Smithers at 847-3612.

Thank you for your attention to this submittal.

Yours truly,



Eric A. Shaede, Ph.D.  
Prospector  
phone: 836-2125

## MINING PROPERTY DOCUMENTATION

DESCRIPTION: "CANYON" claim, Omineca Mining District, Record No. 7271  
NTS Map 93L/7W, 20 units 5Ex4S, Staked Sept. 7/8, 1985,  
Date of record September 30, 1985.

OWNERSHIP: On record: Eric A. Shaede, R.R. #1, Sicamous, B.C., VOE 2VO  
(604)836-2125.

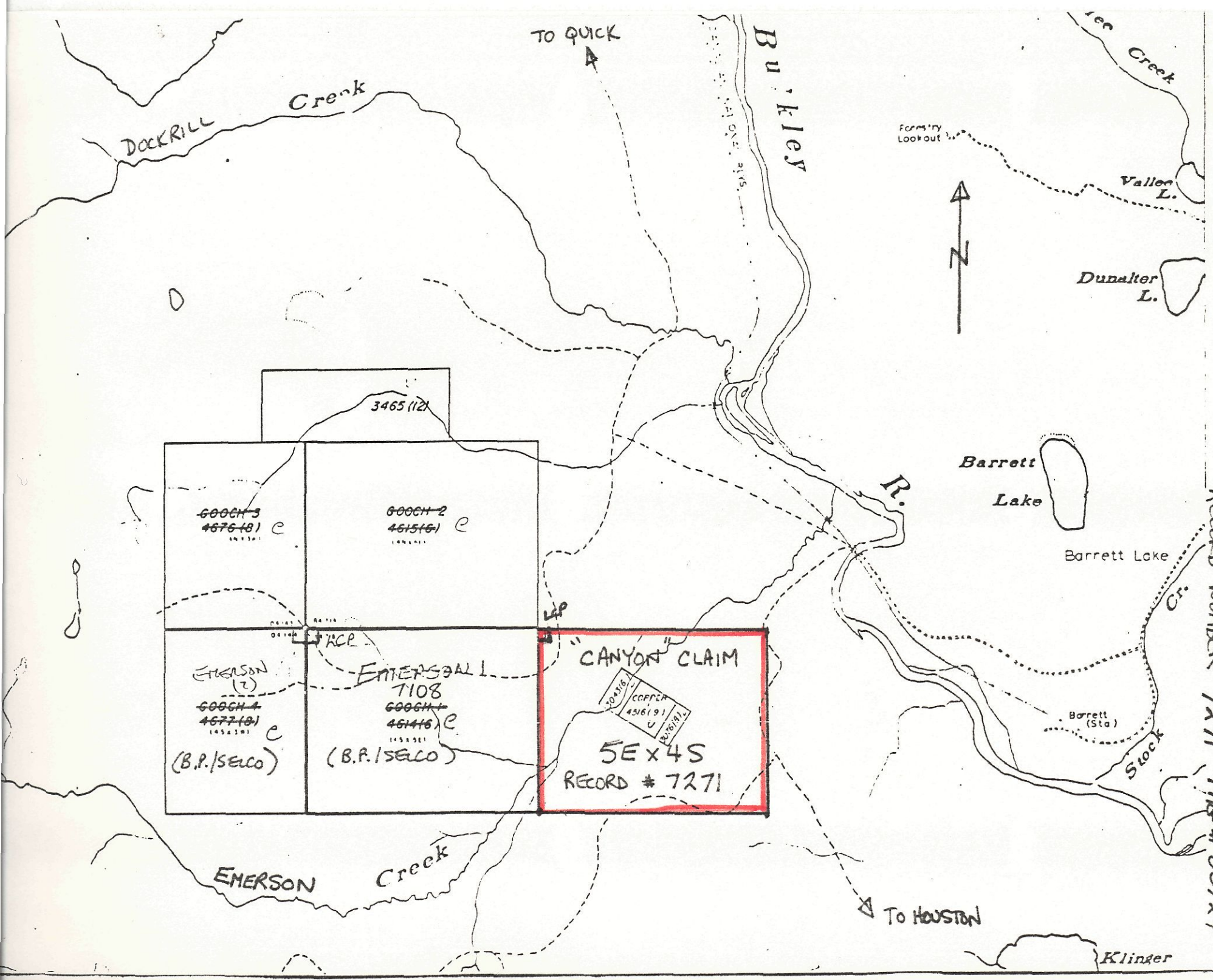
Partner(50%): Lorne B. Warren, Box 662, Smithers, B.C., VOJ 2NO  
(604) 847-3612.

- FEATURES:
- Excellent access by good gravel logging roads from Houston (approximately 15km) and Quick, B.C. See attached map.
  - Near CNR mainline and Highway 16.
  - Numerous showings of massive magnetite and pyrite with chalcopyrite and some precious metals values in old trenches dating from previous exploration efforts in the late 1960's. See sample information and analyses with plan attached.
  - Geologically favourable environment with rhyolite volcanics adjacent to a diorite intrusive. See geological map attached.
  - Potential for location of a large tonnage of magnetite and copper ore with precious metals credits. Market for the magnetite exists in the coal processing operations of northern B.C. and Alberta. Empty coal trains pass within 3 km of the property and anticipated freight rate for magnetite concentrator backhaul to the coal mines is low.
  - Property has not been actively explored since the late 1960's when it was examined as a porphyry copper/moly prospect. The work done was primarily magnetometer surveys and trenching and no record of any drilling has been found. An old access road and the old trenches are partially overgrown but could be easily rehabilitated.
  - A significant magnetic anomaly is located in the area of the trenches and beyond. See contour map of Fortune Channel Mines attached.
  - Only other claims in the area are held by B.P./Selco, who hold 32 units to the immediate west of the Canyon claim. These claims cover an area explored most recently as a molybdenum prospect with some interesting precious metals anomalies in trenching. The property recently came open and was restaked this summer by B.P..
  - The low relative elevation of the claim area will allow year round access for exploration.

OPTION TERMS: Open to offers with a small cash down payment and a significant work commitment for 1986 season.

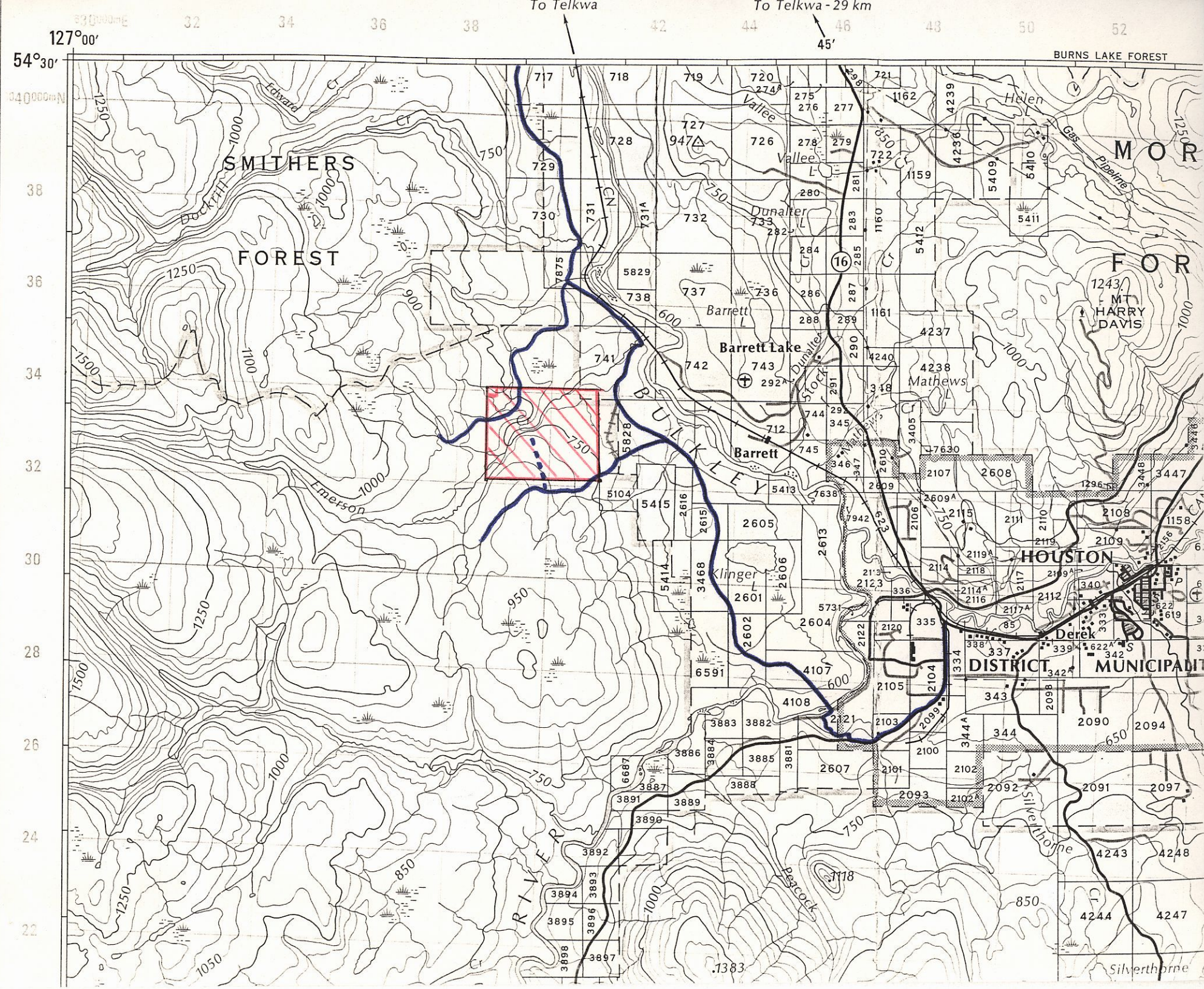
CLAIMS MAP 93L/7W 1:50000

LOCATION OF "CANYON" CLAIM  
RECORD NUMBER 7271 THE # 85724



Klinger

"CANYON" CLAIM LOCATION / ACCESS MAP 93L/SE 1:100,000



To Telkwa

To Telkwa - 29 km

BURNS LAKE FOREST

MOR

FOR

1243  
MT HARRY DAVIS

HOUSTON DISTRICT MUNICIPALITY

Derek

Silverthorne

"CANYON" CLAIM - 1985 PROSPECTING SAMPLES

SAMPLE INFORMATION\*

<u>Sample:</u>	<u>Type, Location, Description, Comments:</u>
1.	Silt sample from Emerson Creek just above bridge on Walcott Forest Road. Preconcentrated in field by panning and subjected to Heavy Medium concentration in Lab.
2.	Chip sample across 1 meter. Silicious rock with pyrite in old trench.
3.	Selected sample of mineralised rock from old trench same location as sample 2.
4.	Selected sample of fine grained silicious rock with pyrite and magnetite from large trench.(T2).
5.	Selected sample of rock with pyrite and magnetite from large trench.(T2).
6.	Selected samples of vuggy, limonitic quartz from narrow weathered vein at west end of large trench.(T2).
7.	Selected quartz vein rock with massive pyrite from narrow vein at west end of small trench.
8.	Reddish brown skarn with garnet from trench on road. May be float.
9.	Andesite (?) with some magnetite and pyrite from trench on road.
10.	Massive magnetite with quartz.
11.	Magnetite with pyrite and calcite from trench near canyon.
12.	Grey cherty rock with pyrite and magnetite from trench near canyon.
13.	Massive magnetite from same trench as sample 12.
14.	Massive magnetite with pyrite, chalcopryrite and calcite. from criss-cross trench near canyon.
15.	Massive magnetite with pyrite and calcite from same trench as sample 14.
16.	Silt sample from Emerson creek canyon just downstream from area of trenches. -80 mesh assayed directly - not concentrated.
17.	Float rock from creek bed with fine grained pyrite.
18.	Massive magnetite and pyrite from large trench.
19.	Banded massive magnetite and pyrite from large trench.
20.	Vuggy quartz with pyrite and hematite from small trench on road. Same location as sample 7.
21.	Quartz with fine pyrite from same trench as sample 20.
22.	Dark silicious rock with pyrite from south end of small trench.
23.	Massive magnetite with pyrite from dump at end of small trench.
24.	Light green rock with pyrite from edge of trench.

---

\* See attached 1'=200' plan of trenches for relative positions of sample locations and trenches.

CANYON CLAIM - SAMPLE LOCATION

WALCOTT 17

14+00E

12+00E

10+00E

8+00E

6+00E

4+00E

2+00E

2+00W

4+00W

6+00W

8+00W

10+00W

12+00W

14+00W

A  
① SILTAM SEDIMENT CONCENTRATE FROM SEVERAL KILOMETERS DOWNSTREAM

⑬ SILTAM SEDIMENT  
⑭ FLOAT-SULFIDE-RICH ROCK FROM CREEK BED

EDGE OF ETHERSON (SUNSET) CREEK CANYON

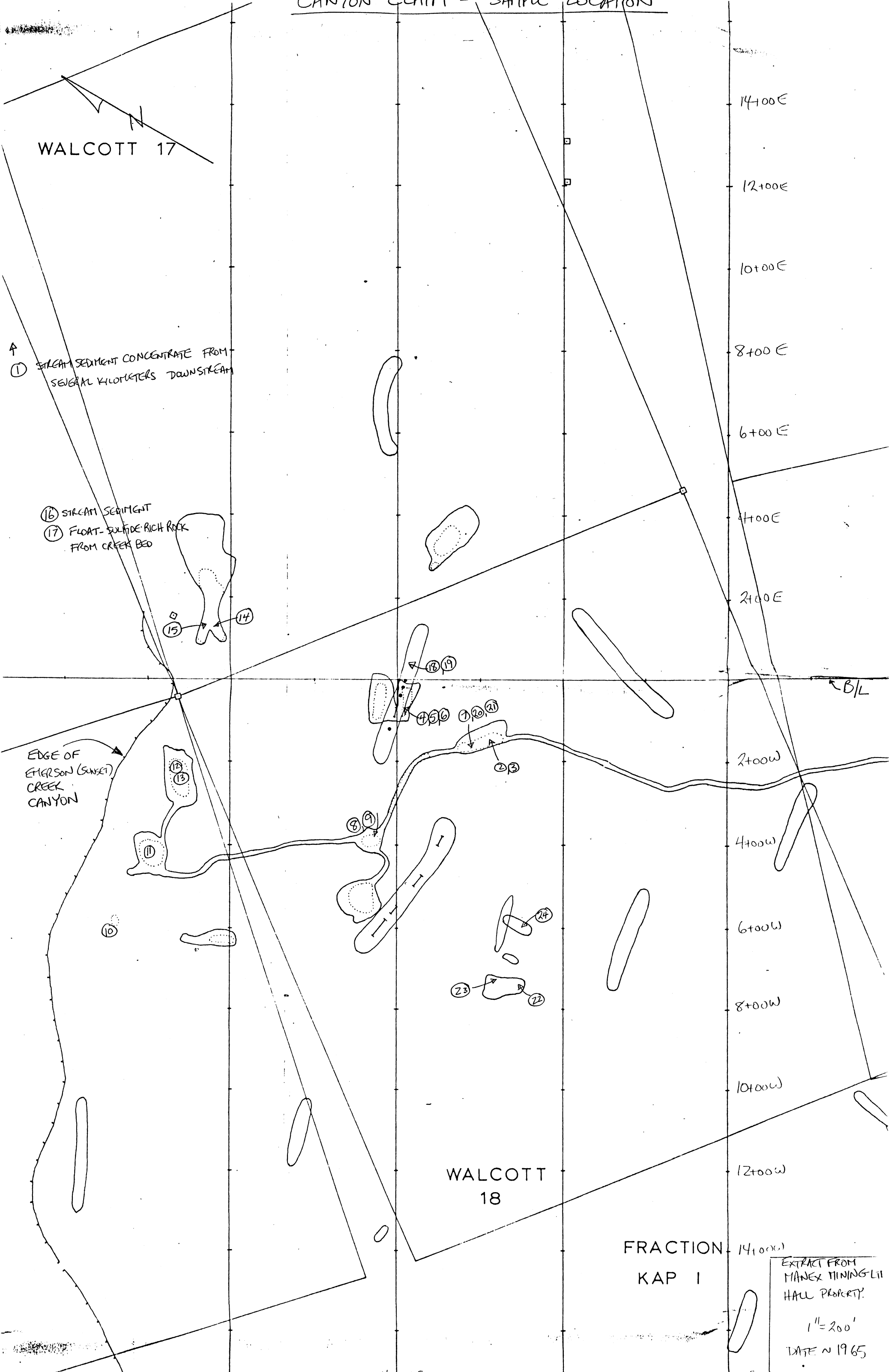
WALCOTT 18

FRACTION KAP 1

EXTRACT FROM MANEX MINING LIT HALL PROPERTY.

1" = 200'

DATE ~ 1965



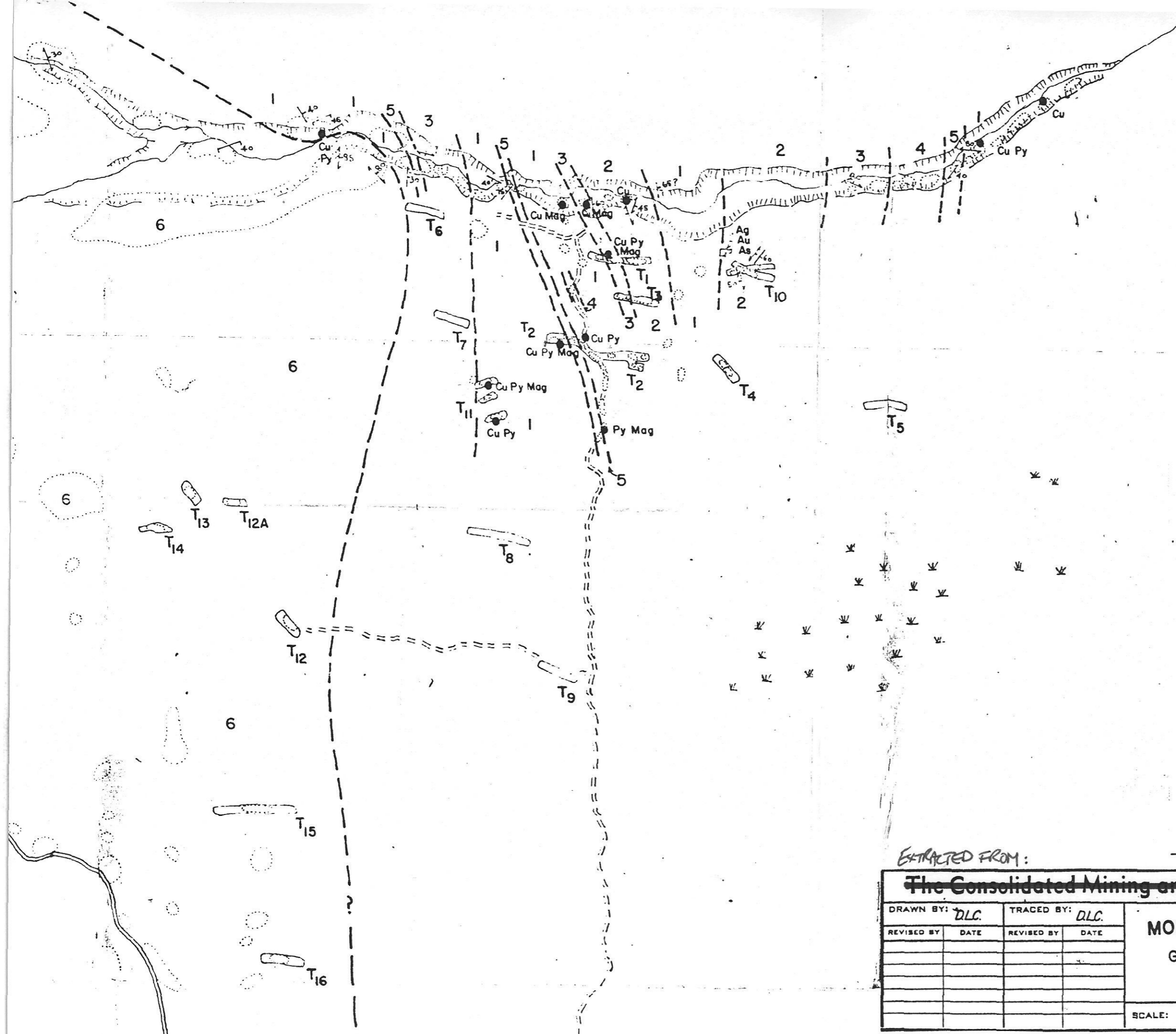
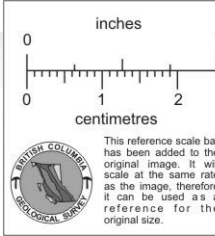
## MIN-EN LABS ICP GEOCHEMICAL ANALYSES

Sample No.	1	2	3	4	5	6	7	8	9	10	11	12
Description	Silt	Rock	Rock	Rock	Rock	Rock	Rock	Rock	Rock	Rock	Rock	Rock
Ag,ppm	2.5	1.9	1.8	2.8	2.0	3.0	3.7	3.0	1.8	3.7	2.3	0.3
Al,%	1.0	1.9	1.4	1.8	1.8	0.7	0.2	1.3	1.1	0.5	2.2	0.09
As,ppm	1	516	51	1	31	127	552	28	31	12	42	16
B,ppm	18	24	19	27	21	14	14	16	9	16	21	1
Ba,ppm	167	61	63	46	45	145	31	101	17	72	54	15
Be,ppm	5.5	10	10	14	7.2	8.1	13	7.6	3.0	15	7.4	0.7
Bi,ppm	27	60	62	57	29	34	79	32	15	53	27	2
Ca,%	0.67	0.10	0.12	4.3	6.0	0.06	0.08	12.8	4.1	1.1	10.2	0.86
Cd,ppm	0.1	0.5	0.1	0.1	1.1	0.8	1.1	0.9	0.6	0.1	1.4	0.6
Co,ppm	13	31	45	15	17	28	232	6	15	14	9	2
Cu,ppm	234	1361	1783	127	139	615	2249	30	202	212	20	42
Fe,%	12.0	13.0	12.6	20.5	10.4	9.5	15.4	13.6	5.5	26.4	11.4	1.0
K,ppm	180	540	300	260	330	1290	40	60	50	50	90	40
Li,ppm	7	52	38	28	30	2	1	8	17	2	20	1
Mg,%	0.5	0.5	0.4	1.3	1.3	0.2	0.2	0.3	0.7	0.2	1.0	0.05
Mn,%	0.13	0.03	0.02	0.19	0.18	0.004	0.002	0.59	0.18	0.07	0.33	0.03
Mo,ppm	13	19	18	23	16	21	21	19	8	32	17	4
Na,ppm	50	290	250	290	330	270	10	70	100	20	10	10
Ni,ppm	1	11	14	3	12	11	15	11	28	3	9	6
P,ppm	950	530	580	180	580	380	110	290	100	420	1640	20
Pb,ppm	45	64	64	66	61	145	97	63	33	80	67	7
Sb,ppm	19	22	19	25	15	17	33	30	11	50	29	2
Sr,ppm	36	30	25	33	24	22	20	1	20	78	113	2
V,ppm	177	123	84	338	557	86	28	562	422	277	690	264
Zn,ppm	102	56	35	134	87	46	11	29	50	38	78	10
Au,(fire)ppb	50	47	42	6	13	32	1225	4	27	164	20	5



MIN-EN LABS ICP GEOCHEMICAL ANALYSES

Sample No.	13	14	15	16	17	18	19	20	21	22	23	24
Description	Rock	Rock	Rock	Silt	Float	Rock	Rock	Rock	Rock	Rock	Rock	Rock
Ag,ppm	2.9	4.5	3.9	1.2	2.4	2.6	3.1	2.9	1.3	2.2	4.1	2.0
Al,%	0.7	1.4	1.4	1.7	2.4	1.8	1.5	0.1	0.07	2.0	0.8	2.2
As,ppm	1	137	13	1	5449	21	26	46	44	15	191	210
B,ppm	18	17	17	18	26	24	23	13	8	15	15	23
Ba,ppm	114	95	32	232	44	70	40	41	19	143	46	38
Be,ppm	14	11	8.5	3.2	12	9.9	10	12	5.6	3.2	8.4	6.7
Bi,ppm	45	46	37	15	40	36	41	69	26	26	48	37
Ca,%	0.35	8.2	11.2	0.61	1.2	5.5	6.3	0.1	0.05	0.79	7.0	0.13
Cd,ppm	0.3	1.1	0.9	1.8	44.4	1.0	0.8	1.1	1.4	1.6	3.8	2.8
Co,ppm	13	34	22	14	22	19	28	396	67	14	72	32
Cu,ppm	187	544	383	38	246	119	230	3480	710	42	963	846
Fe,%	22.4	17.9	15.2	5.3	16.9	16.3	17.5	18.4	7.5	5.3	10.8	7.4
K,ppm	120	70	50	1540	40	1690	60	40	30	7180	50	1130
Li,ppm	3	3	10	16	17	17	5	1	1	22	5	39
Mg,%	0.3	0.2	0.4	1.1	0.8	0.3	0.2	0.09	0.04	1.2	0.3	0.4
Mn,%	0.07	0.31	0.27	0.10	0.12	0.37	0.42	0.002	0.004	0.05	0.24	0.03
Mo,ppm	29	23	20	8	30	23	25	25	12	10	19	15
Na,ppm	30	20	10	410	10	520	10	10	10	1310	10	290
Ni,ppm	8	10	9	14	21	12	9	12	9	14	17	12
P,ppm	100	610	380	590	2750	670	1220	150	90	250	240	960
Pb,ppm	88	72	67	35	93	73	70	84	48	81	137	81
Sb,ppm	46	38	33	10	45	36	38	40	18	10	29	21
Sr,ppm	72	27	17	44	73	45	40	56	24	55	54	59
V,ppm	465	245	112	89	197	66	78	16	28	507	322	367
Zn,ppm	65	23	43	115	74	65	35	18	13	119	264	68
Au,(fire)ppb	15	30	22	2	169	5	9	160	183	160	600	210

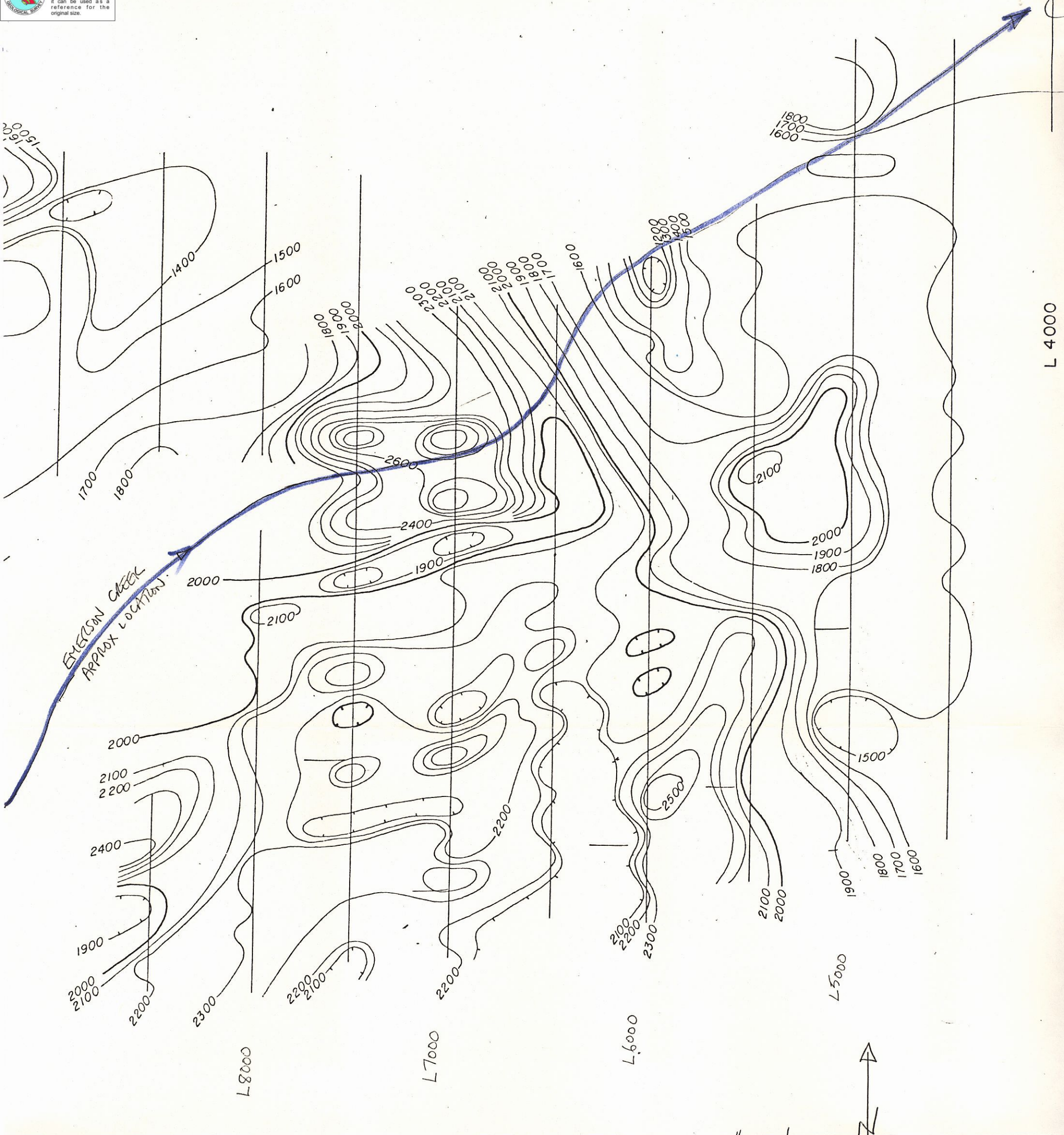
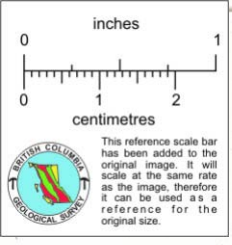


**LEGEND**

- 1 Rhyolite flows - grey, white
- 2 Rhyolite tuffs - grey, white
- 3 Quartz-Eye Rhyolite flows
- 4 Brown and/or grey andesite tuff
- 5 Black Rhyolite tuffs, minor basalt
- 6 Grey intrusive diorite
- Edge of canyon
- Trench
- Outcrop
- Logging Road
- Bulldozer Road
- Geological contact — Inferred
- Dip and Strike — shearing
- " " " — bedding and/or flow structure
- " " " — jointing
- Approximate outline of Claim group
- Copper, magnetite - pyrite mineralization

EXTRACTED FROM:

<b><del>The Consolidated Mining and Smelting Company of Canada Limited</del></b>							
DRAWN BY: <i>DLC.</i>		TRACED BY: <i>DLC.</i>		<b>MOLYMINE EXPLORATIONS LTD</b> <b>GEOLOGY - WALCOTT GROUP</b> <b>Omineca MD</b>			
REVISED BY:	DATE:	REVISED BY:	DATE:				
SCALE: 1" = 400'				DATE: OCT. 6 1966		PLATE: mm-66-3	



MAGNETOMETER SURVEY DATA  
PORTION OF "CANYON" CLAIM

1" = 500'  
EXTRACT FROM PLATE 3  
FORTUNE CHANNEL MINES  
ASSESSMENT REPORT #2308  
MARCH 1970.