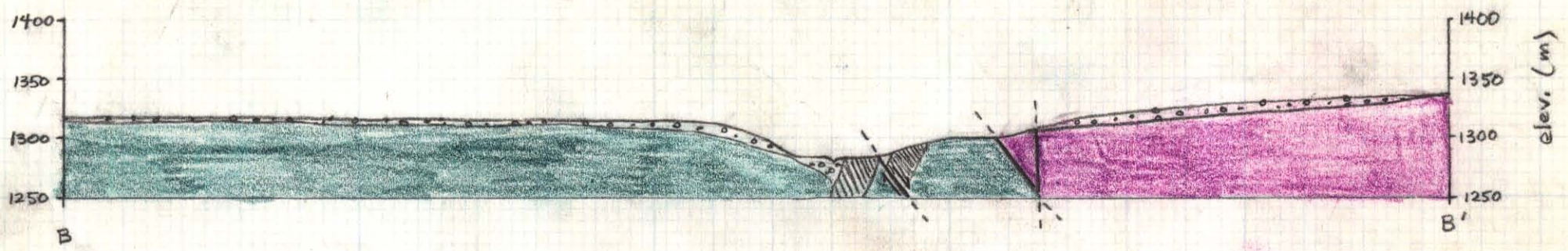

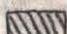





B 1318 1315 1310 1300 1290 1300 1325 B' 1337



-  TILL, OVERBURDEN
-  SOUTH ZONE MINZ + ALTIN
-  ASH, XTAL, LAPILLI, + XTAL LITHIC TUFFS; VOLCANIC SILTSTONE, WACKE, BRECCIA (SHARPSTONE)
-  INTERMEDIATE ± AMYGDALOIDAL FLOWS, MAY INCLUDE FRAGMENTAL VOLCANICS.
-  FAULT

GEOLOGICAL SECTION
 B - B'
 SHEET 2
 1:5000

Clisbako
 093C/09

821119

inches
 0 1
 centimetres
 0 1 2

This reference scale bar has been added to the original image. It will scale at the same rate as the image, therefore it can be used as a reference for the original size.

