

820292

I.P. SURVEY - LIZARD HEAD 1 CLAIMS

N.T.S. 92P/16 120°15'W Long. 51°46'N Lat.

KAMLOOPS M.D.

Mauro G. Berretta, MSc.

Charles A. Ager, PhD, PEng.

September 1980

MAR 23 1981

AGER, BERRETTA & ASSOCIATES INC.

Telephone: (604) 669-7748

CONSULTING
GEOPHYSICISTS

206 - 595 Howe Street
Vancouver, B.C., Canada
V6C 2T5

INDUCED POLARIZATION SURVEY - LIZARD HEAD 1 CLAIMS

SUMMARY

An induced polarization survey on the Lizard Head Property did not outline any significant anomalous responses. Percent frequency effect and resistivity values observed are typical of intrusive rocks that are believed to underlie the property. Therefore, no further work is recommended.

Vancouver, B.C.
September, 1980

Respectfully submitted,



Mauro G. Berretta



Charles A. Ager, P. Eng.



TABLE OF CONTENTS

Introduction	page 1
Induced Polarization Survey	page 1
Induced Polarization Results	page 2
Conclusions and Recommendations	page 2

LIST OF FIGURES

Figure 1	Location Map	page 1a
Figure 2	Property and Grid Map	page 1b
Figure 3	P.F.E. Map	leaflet
Figure 4	Resistivity Map	leaflet

INTRODUCTION

During the periods from July 30 to August 6 and from August 20 to August 26, an induced polarization survey was carried out on the Lizard Head Property of Kerr Addison Mines Ltd. The field work was carried out under the direction of Gordon Ellis, B.Sc., M.B.A., geophysicist.

Crew

G. Ellis, geophysicist
 S. Frederickson, geophysical operator
 K. Poehnnel, geophysical operator
 D. Florence, field assistant
 R. Haveman, field assistant

Property

<u>Claim</u>	<u>Units</u>	<u>Record No.</u>	<u>Expiry</u>
Lizard Head 1	15	1379	Aug. 1980

The property is located in the Kamloops Mining Division, some 15 airmiles north-west of Clearwater, B.C. (Fig 1). Access is via logging roads from Clearwater. The terrain is gently rolling and well forested. Outcrop exposure is almost non-existent.

INDUCED POLARIZATION SURVEY

Previous work on the property consists primarily of a soil geochemical survey. This had outlined some anomalous responses in molybdenum. Thus, the intent of the induced polarization survey was to investigate the possible presence of 'porphyry-copper' type sulfide mineralization.

30'

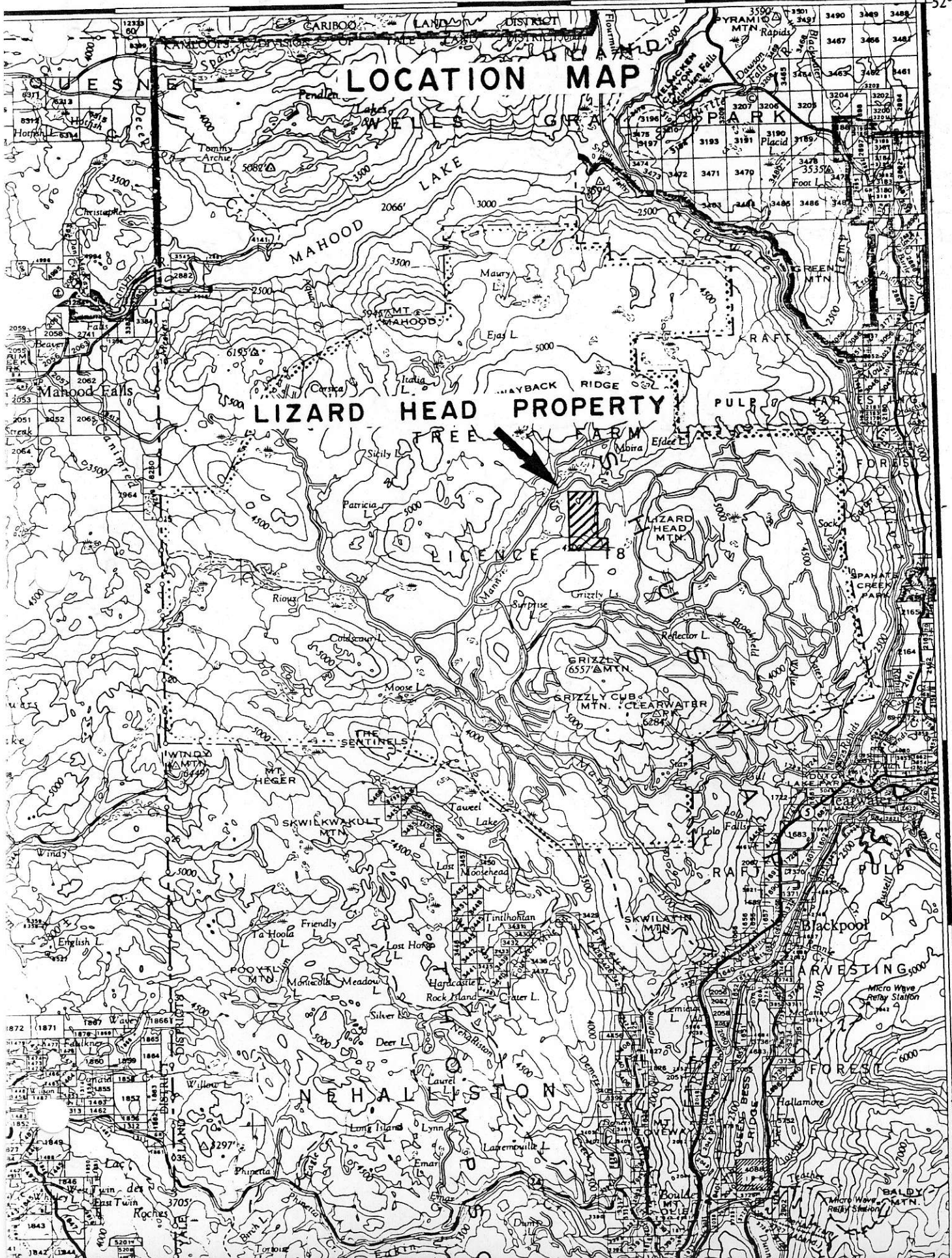
SCALE : 1" = 4 MILES

15'

FIG. 1

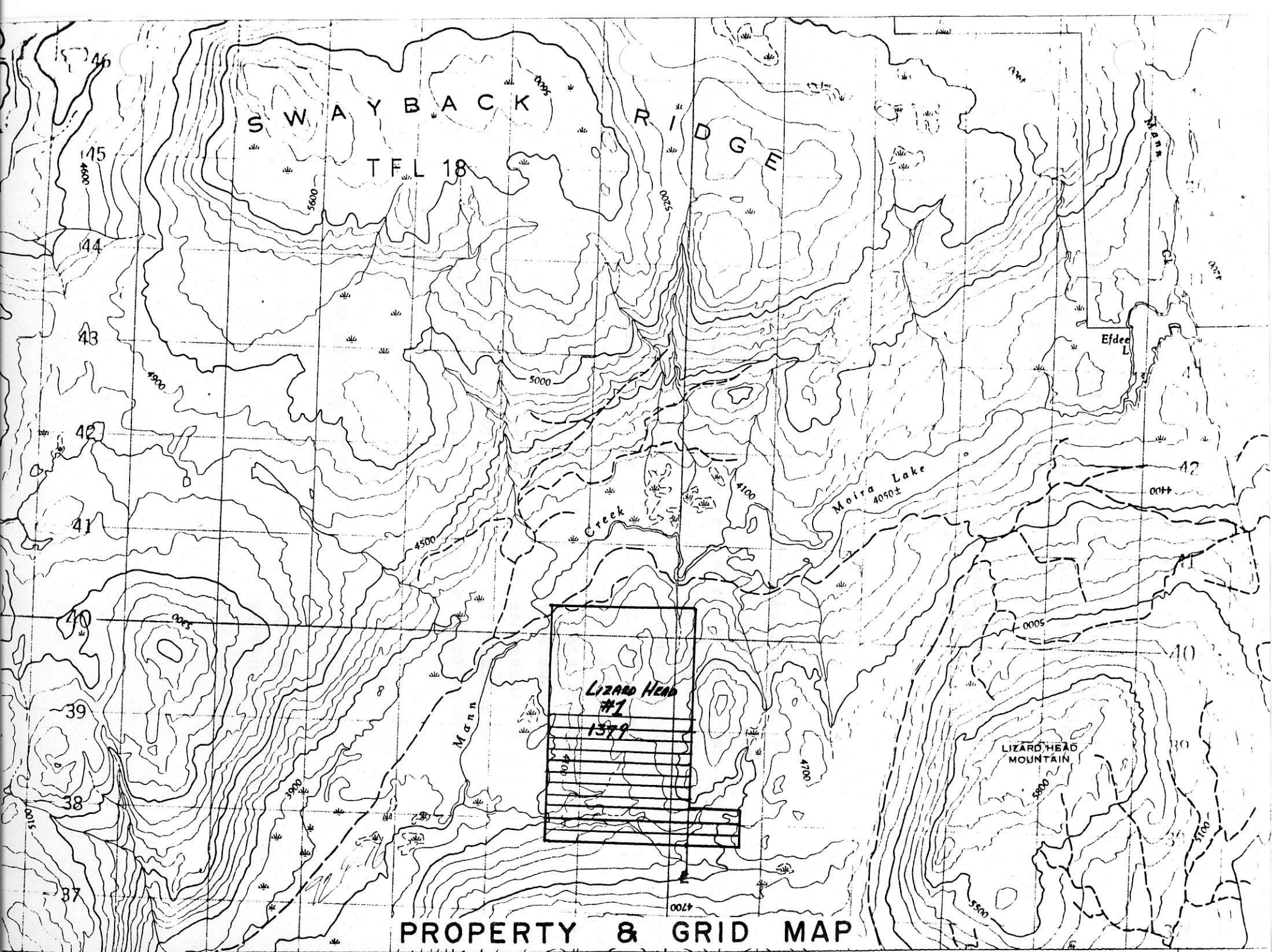
120°00'

52°00'



To Birch Island - 6 Miles

30'



PROPERTY & GRID MAP

To this end, a 450 watt frequency domain system was used in the dipole-dipole configuration, with a dipole of 100m., $n=2$, and a frequency span of 0.3-10 Hz.

A total of 16.3 km. of data was obtained at station intervals of 100 m., and along eleven lines spaced 100 m. apart (Fig. 2).

INDUCED POLARIZATION RESULTS

The i.p. results are shown in Figures 3 and 4. Percent frequency effect values of 0-5% were observed, with background appearing to be in the range 0-3%. Responses of 3%-5% occur in a very irregular and scattered manner, rather than in any consistent trend. Consequently, these somewhat higher values are not considered anomalous. Most likely, they are due to overburden effects and/or variations in background polarizable material within bedrock. Resistivities are in the range 500 to 9000 ohm-metres. The lower values are representative of overburden cover. The higher ones are typical of intrusive rocks that are overlain by variable thicknesses of overburden.

CONCLUSIONS AND RECOMMENDATIONS

The i.p. results obtained do not indicate the presence of 'porphyry-copper' type sulfides within the survey area. In view of the large survey parameters employed, small concentrations of sulfides would not have been detected. No further work is recommended on the property as a potential low grade large tonnage Cu-Mo prospect.

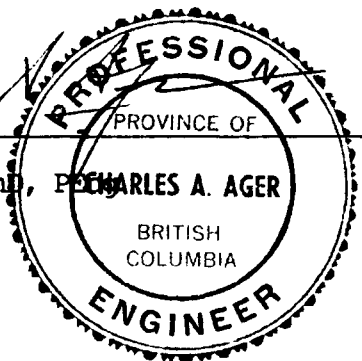
CERTIFICATE OF QUALIFICATIONS

I, Charles A. Ager, do hereby certify that:

1. I am a practising geophysicist with offices at
#206 - 595 Howe St., Vancouver, B.C. Canada V6C 2T5
2. I have received the following university degrees:
 - (a) 1968 BA (Honours Math/Physics)
California State University, Sacramento, Calif.
 - (b) 1972 MSc (Applied Geophysics)
University of B.C., Vancouver, B.C., Canada
 - (c) 1975 PhD (Applied Geophysics)
University of B.C., Vancouver, B.C., Canada
3. I am a member in good standing of the following professional organizations:
 - (a) B.C. Geophysical Society
 - (b) Society of Exploration Geophysicists
 - (c) Association of Professional Engineers of
the Province of British Columbia
4. Since 1968 I have been engaged in exploration and mining geophysics over numerous projects in western North America and eastern Canada.
5. The geophysical field work and the interpretation of the results in this report were done under my direct supervision.

Charles A. Ager

Charles A. Ager, PhD, P.Eng.
Geophysicist



The seal is circular with a double-line border. The outer ring contains the text 'PROFESSIONAL' at the top and 'ENGINEER' at the bottom. Inside this ring, the text 'PROVINCE OF' is at the top, 'BRITISH COLUMBIA' is at the bottom, and 'CHARLES A. AGER' is in the center.

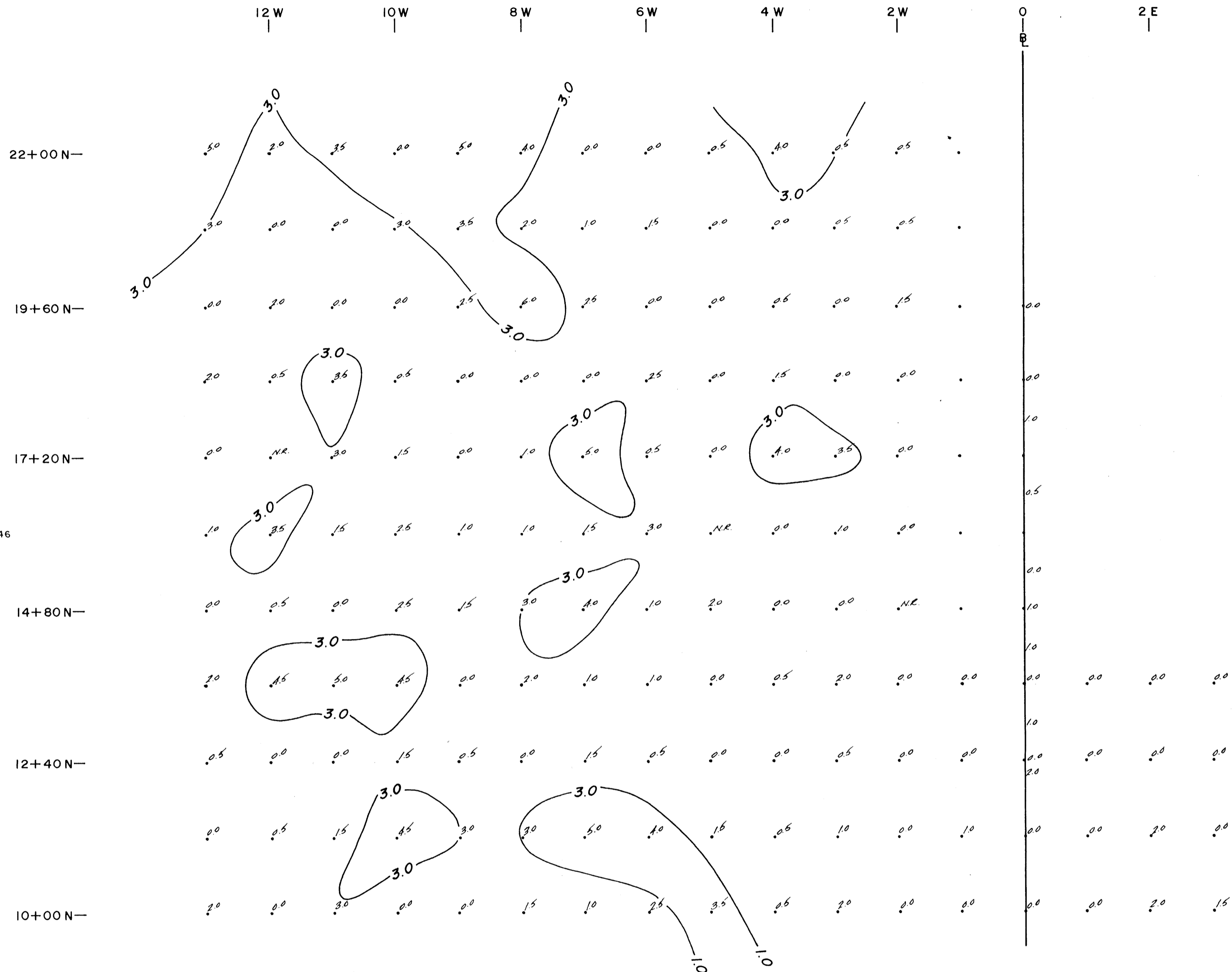
CERTIFICATE OF QUALIFICATIONS

I, Mauro G. Berretta, do hereby certify that:

1. I am a practising geophysicist with offices at
#206-595 Howe St., Vancouver, B.C. Canada V6C 2T5
2. I have received the following university degrees:
 - (a) 1964 BSc. (Honours Physics)
University of Windsor, Windsor, Ontario
 - (b) 1965 MSc. (Theoretical Physics)
University of Windsor, Windsor, Ontario
3. I am a member in good standing of the following professional organization:
 - (a) B.C. Geophysical Society
4. Since 1968 I have been engaged in exploration geophysics as an employee, lecturer, consultant and joint venture partner for UBC and BCIT, and with numerous mining and oil companies. I have considerable experience in all phases of geophysics (i.p., magnetics, e.m., seismics, gravity, resistivity) with special concentration on i.p., e.m. and resistivity methods.
5. The geophysical field work and the interpretation of the results in this report were done under my direct supervision.

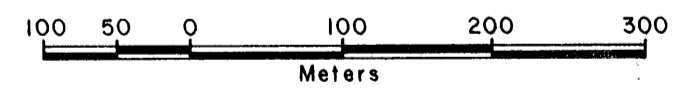
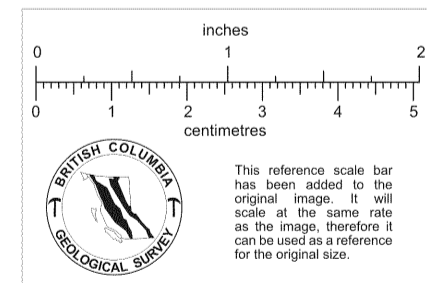
Mauro G. Berretta, M.Sc.
Geophysicist

120° 15'



51° 46'

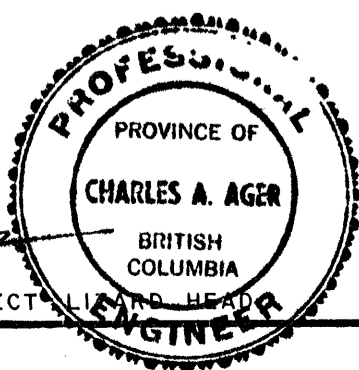
INSTRUMENT: SABRE MARK IV
 DIPOLE - DIPOLE
 a = 100 m
 n = 2
 0.3 - 10 Hz



N.T.S. 92 P/16
KERR ADDISON MINES LTD.
 - LIZARD HEAD PROPERTY -
 KAMLOOPS MINING DIVISION - BRITISH COLUMBIA

PFE MAP
 CONTOUR INTERVAL: 3 PERCENT

TO ACCOMPANY REPORT:
 IP SURVEY
 LIZARD HEAD PROPERTY
 BY: C.A. AGER PH.D., P.E.N.G.
 DATED: SEPT. 1980 PROJECT: LIZARD HEAD



AGER, BERRETTA & ASSOC. INC. VANCOUVER, B.C.	DWN. BY: T.M. CHK. BY: DATE: SEPT. 1980	FIG. NO. 3
-------------------------------------------------	-----------------------------------------------	---------------

120° 15'

12 W 10 W 8 W 6 W 4 W 2 W 0 2 E

22+00 N—

19+60 N—

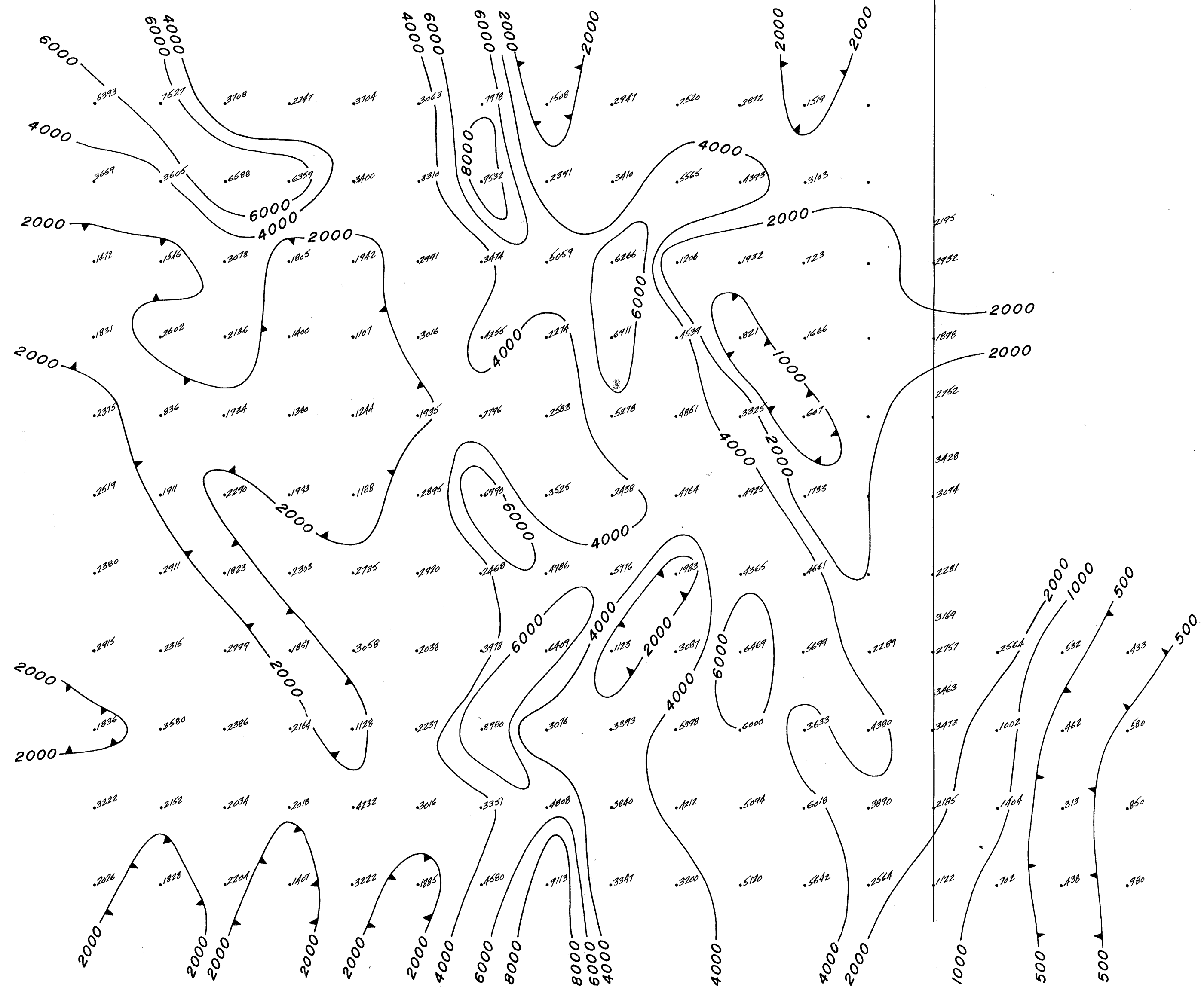
17+20 N—

51° 46'

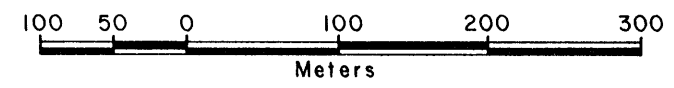
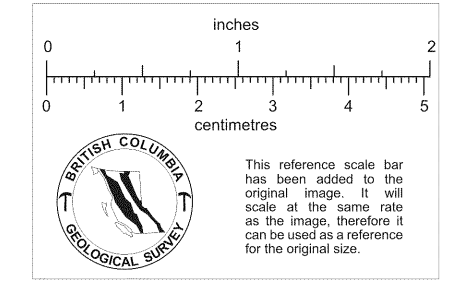
14+80 N—

12+40 N—

10+00 N—



INSTRUMENT : SABRE MARK IV
 DIPOLE - DIPOLE
 a = 100 m
 n = 2
 0.3 - 10 Hz



N.T.S. 92 P/16

KERR ADDISON MINES LTD.
 — LIZARD HEAD PROPERTY —
 KAMLOOPS MINING DIVISION — BRITISH COLUMBIA

RESISTIVITY MAP
 CONTOUR INTERVAL : 500, 1000, 2000
 4000, 6000 Ohm Meters

TO ACCOMPANY REPORT :
 IP SURVEY
 LIZARD HEAD PROPERTY
 BY :
 C.A. AGER PhD, P.Eng.
 DATED : SEPT. 1980 PROJECT : LIZARD HEAD



AGER, BERRETTA & ASSOC. INC. VANCOUVER, B.C.	DWN. BY : T.M. CHK. BY : DATE : SEPT. 1980	FIG. NO. 4
-------------------------------------------------	--------------------------------------------------	---------------