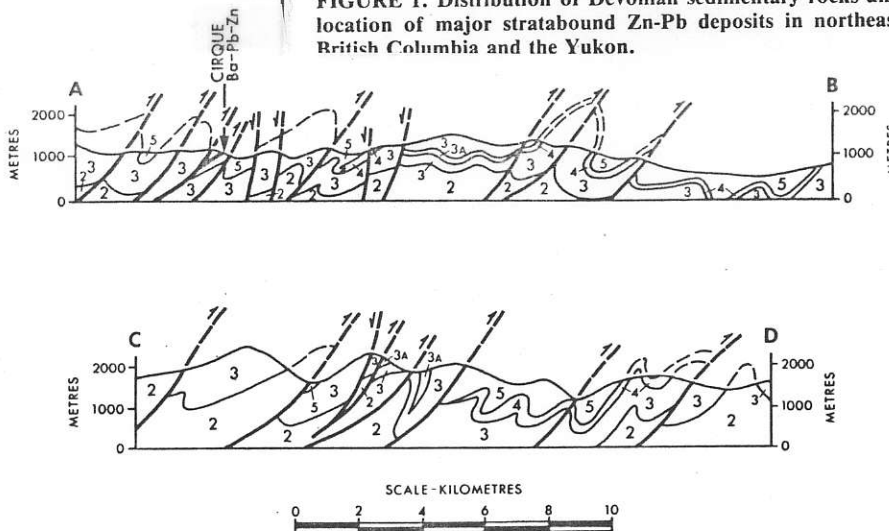
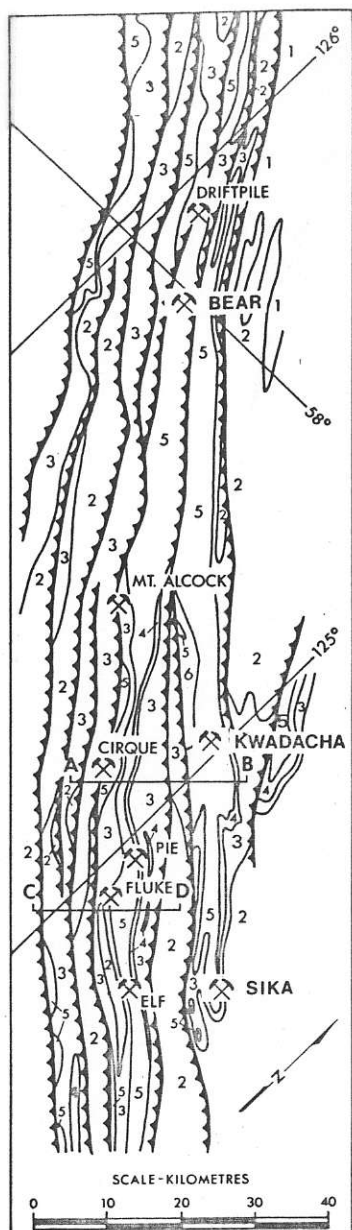


FIGURE 1. Distribution of Devonian sedimentary rocks and location of major stratabound Zn-Pb deposits in northeast British Columbia and the Yukon.



LEGEND

TRIASSIC

6 DOLOMITIC SILTSTONE, LIMESTONE

DEVONIAN

5 BLACK SHALE, SILTY SHALE, SILTSTONE, MINOR SANDSTONE, CONGLOMERATE

4 LIMESTONE, LIMESTONE TURBIDITES, QUARTZ SANDSTONE

MIDDLE ORDOVICIAN - SILURIAN

3 DOLOMITIC SILTSTONE, BLACK GRAPTOLITIC SHALE, CALCAREOUS SILTY SHALE, LIMESTONE TURBIDITES; 3A VOLCANIC ROCKS

CAMBRIAN - LOWER ORDOVICIAN

2 NODULAR PHYLLITIC MUDSTONE, LIMESTONE, QUARTZITE

PROTEROZOIC

1 PHYLLITE, SCHIST

SYMBOLS

THRUST FAULT .....

BARITE ± SULPHIDE DEPOSITS .....

FIGURE 3. General geology of the Driftpile Creek - Akie River Ba-Zn-Pb mineral district.