

Portland  
Canal

Approx. Contact of  
Volc. R. of granod.

Anomaly No 1  
Portland  
Canal Area  
B.C.

Aeromag. Map

1" = 1/4 mi.

820168

103P

PRINTED BY CARLTON 1000 H



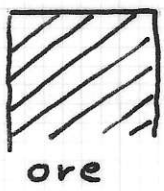
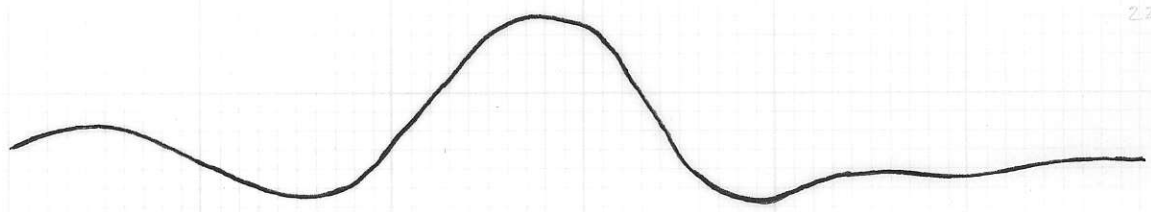
North

South

Mag. Relief

225 γ 225 γ

0 γ 0 γ

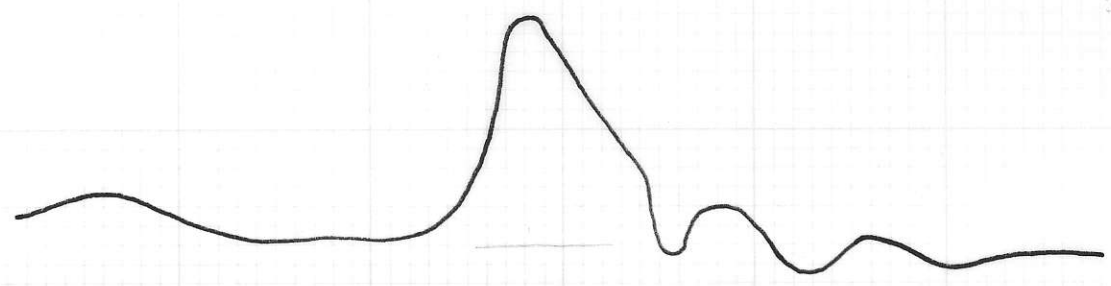


East

West

325 γ 325 γ

0 γ 0 γ



Hidden Cr. Deposit  
Anyox, B.C.

Aeromagnetic Profile

scale 1" = 1500' Approx.



Portland  
Canal.

J70-2  
+ J70-1  
J70-3  
J70-4  
J70-5  
J70-6

gds?

Diorite  
Gneissic di  
Leuco gneiss.

meta volc. mainly And.  
gneiss

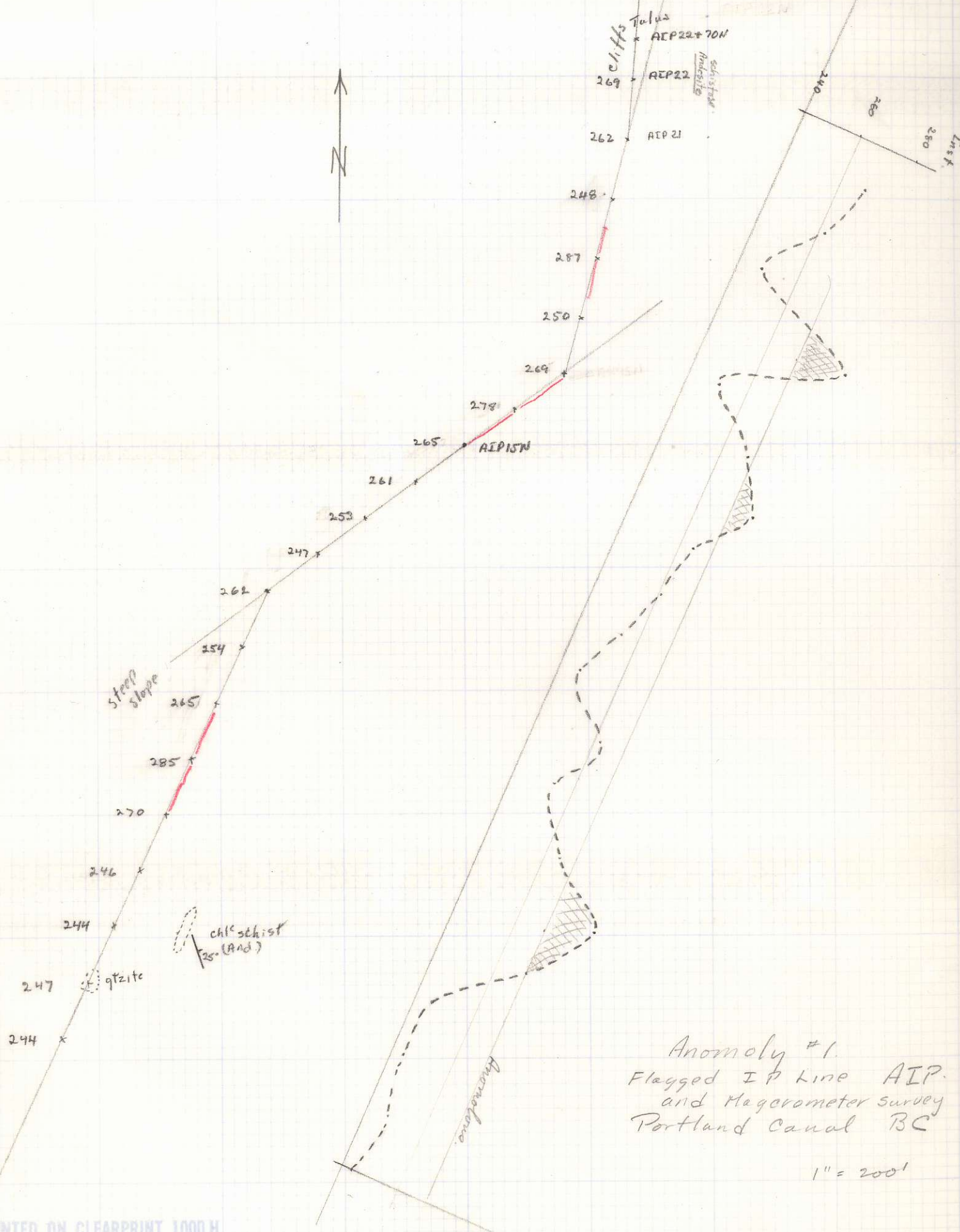
Fld porph dyke

chl. schist

--- Fault

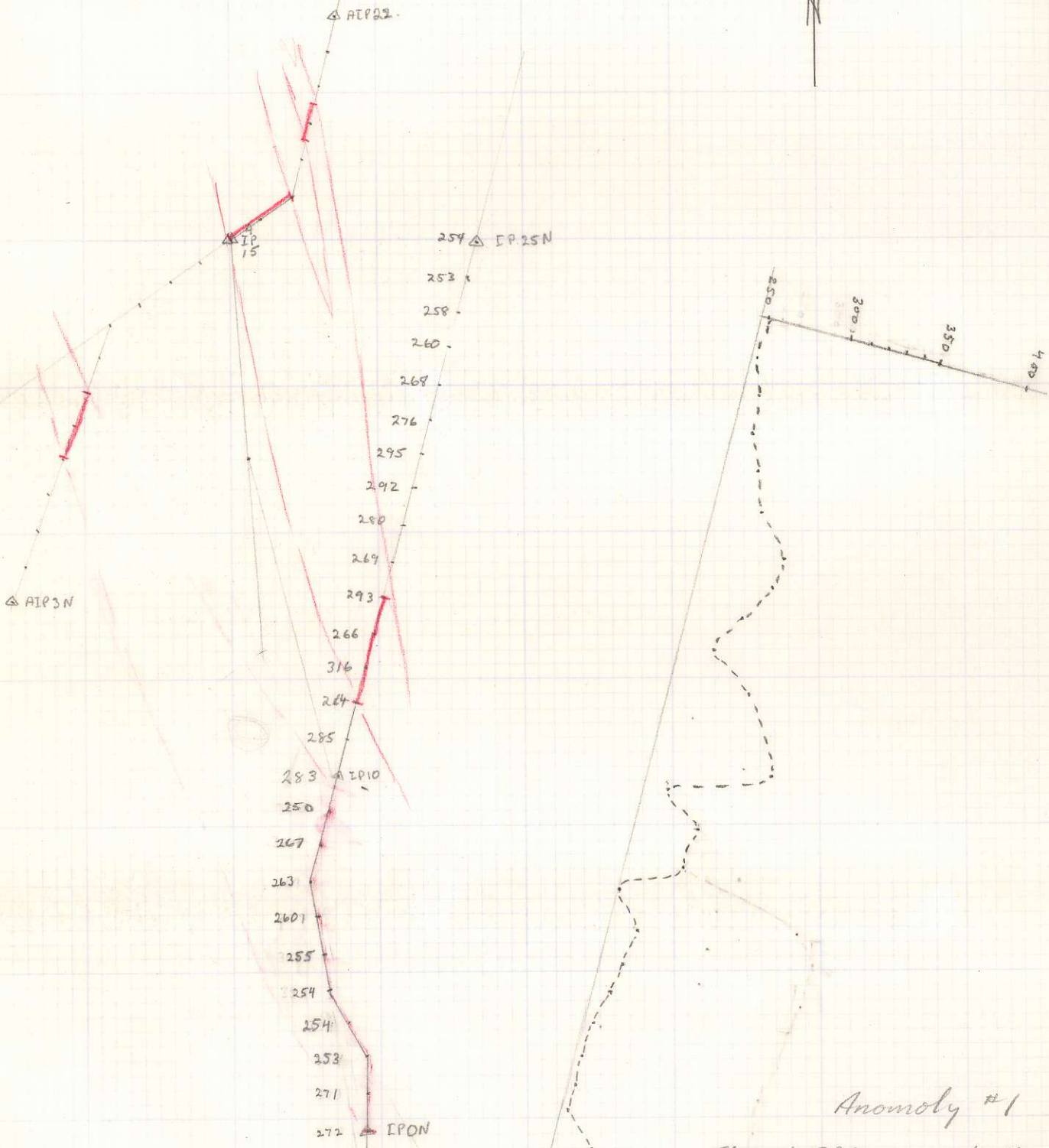
Anom #1

Photo BC 2184-98



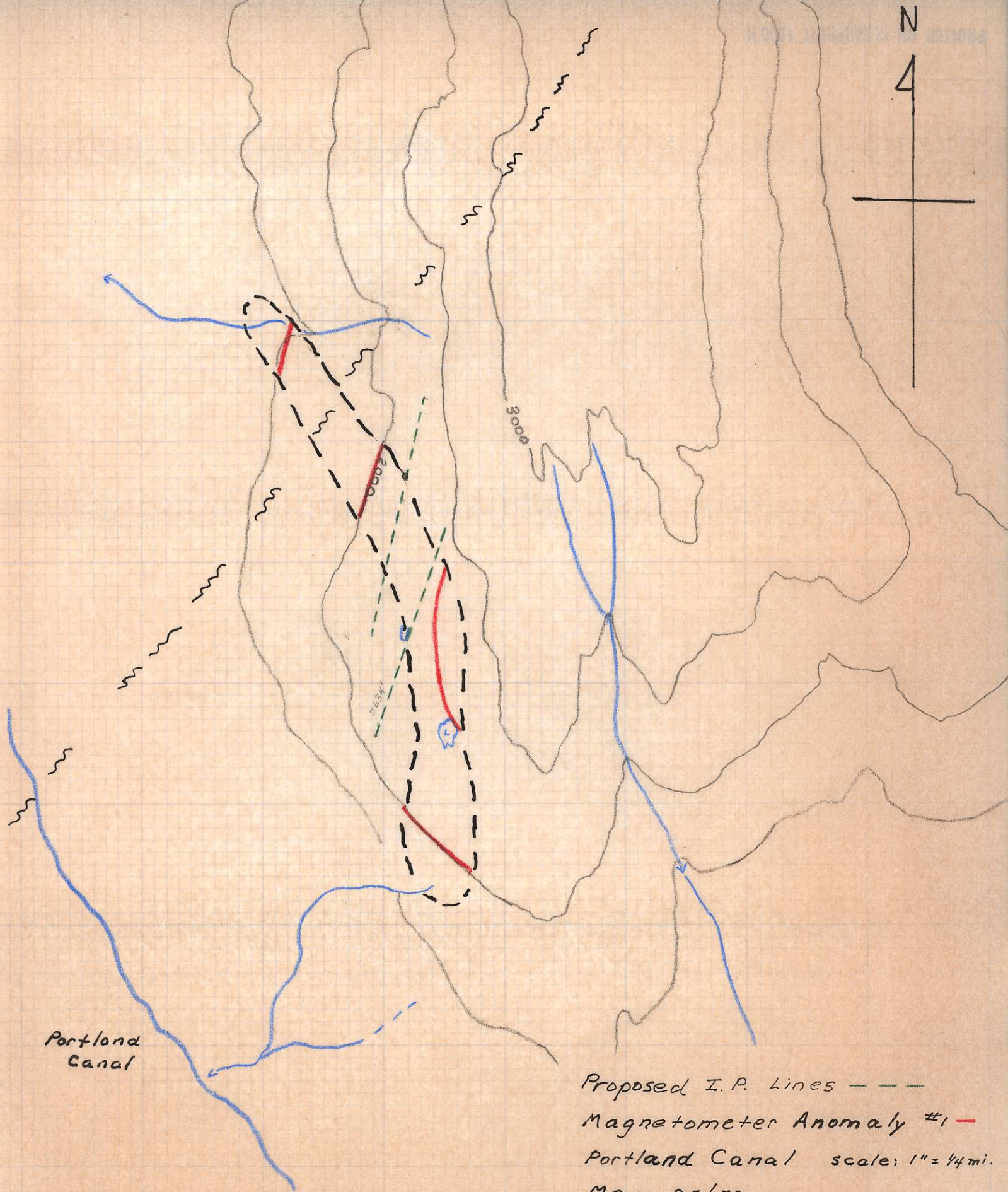
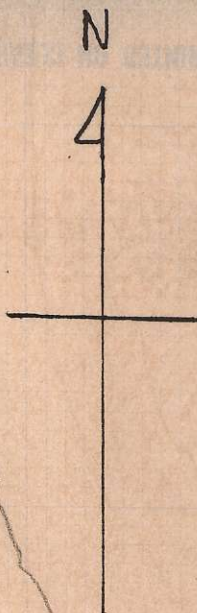
Anomaly #1.  
Flagged IP Line AIP.  
and Magnetometer survey  
Portland Canal BC

1" = 200'



Anomaly #1  
Flagged IP line and May  
Survey  
Portland Canal BC  
1" = 400'

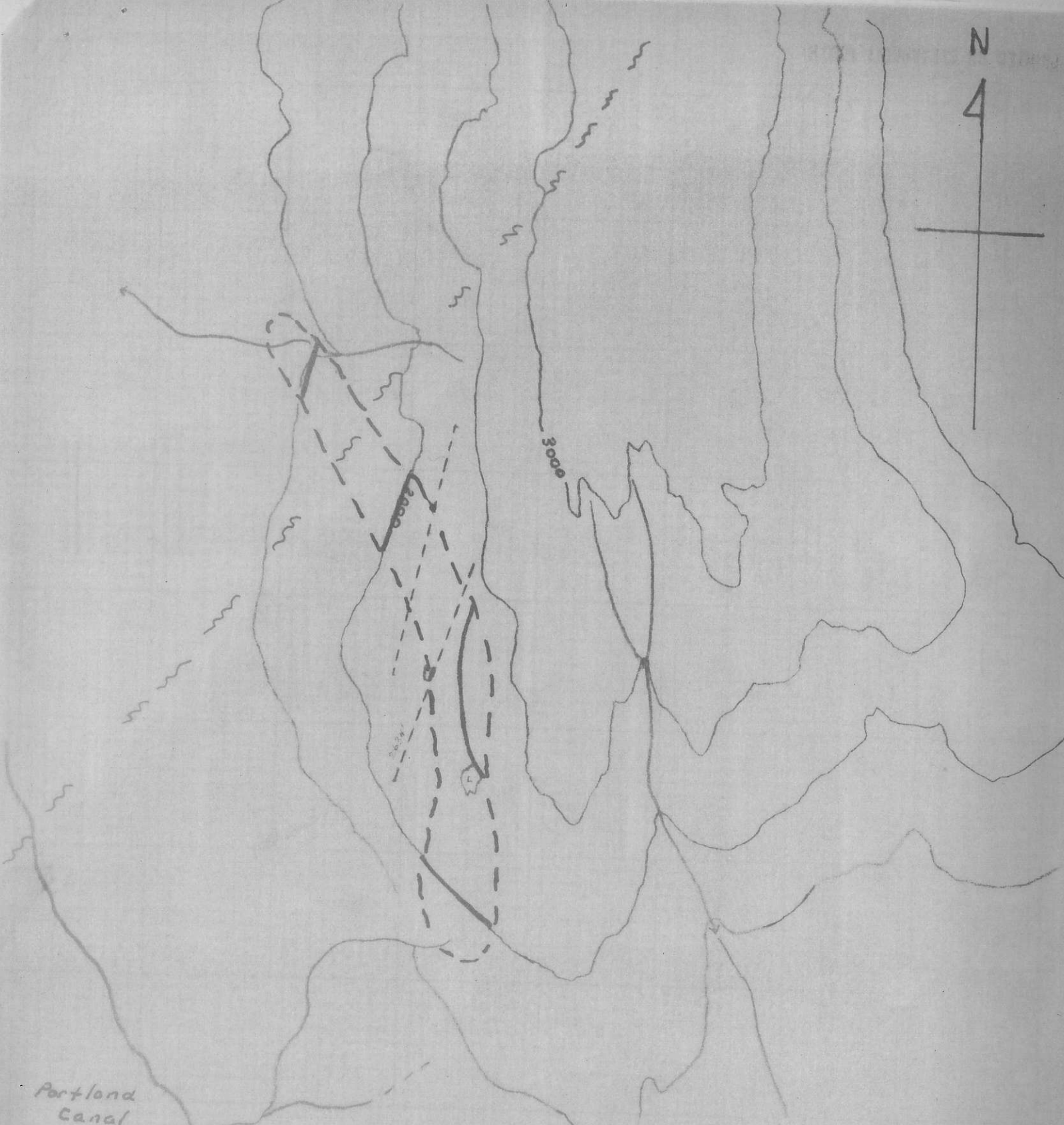
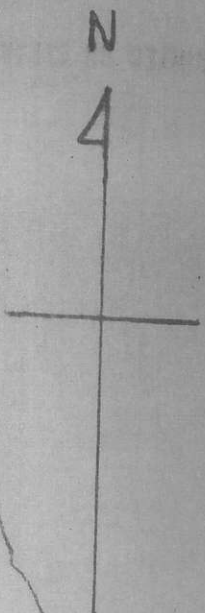




Portland Canal

Proposed I.P. Lines - - -  
Magnetometer Anomaly #1 -  
Portland Canal scale: 1" = 1/4 mi.  
May 25/70

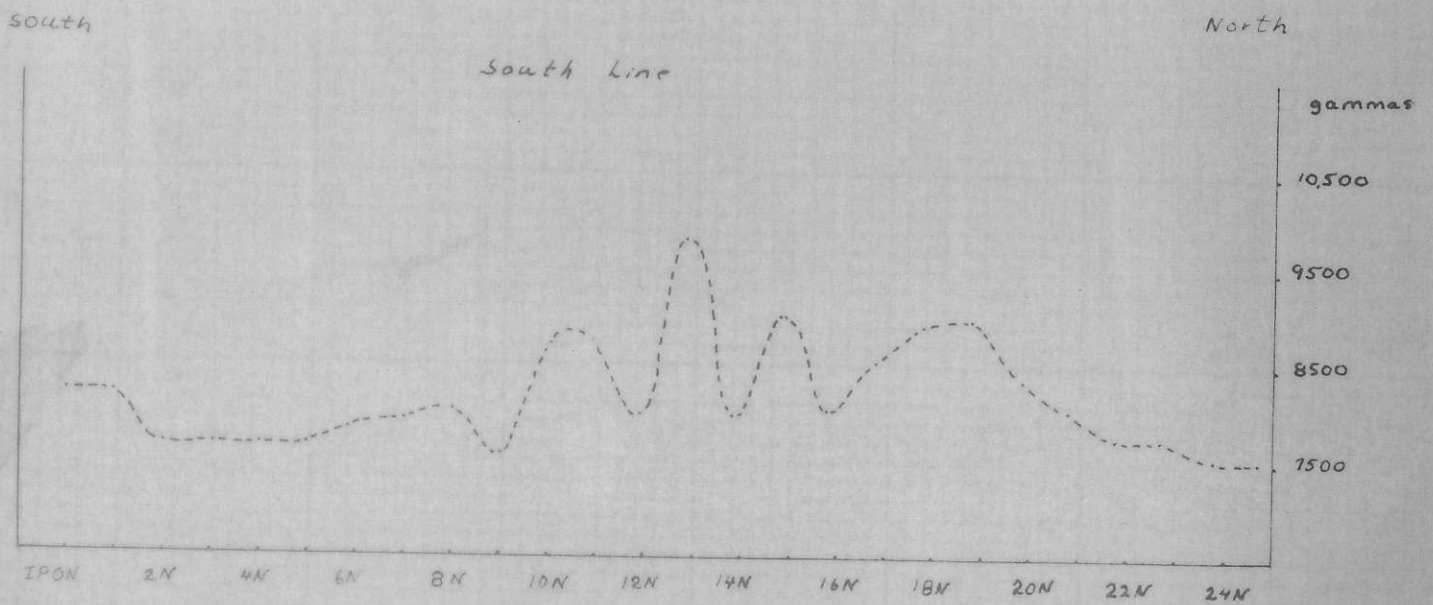
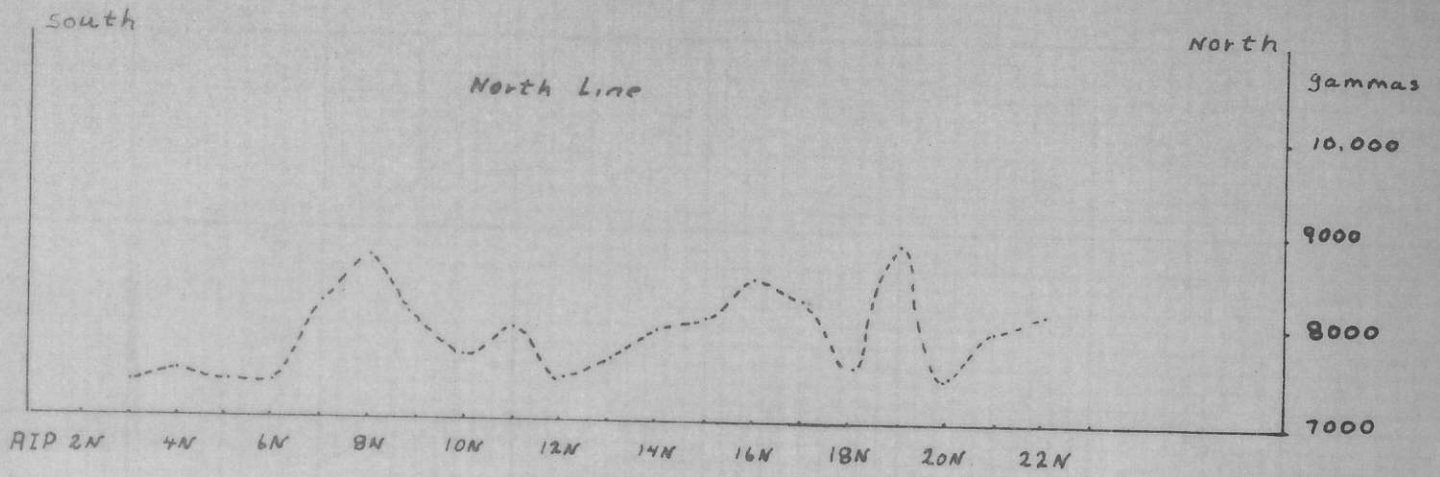




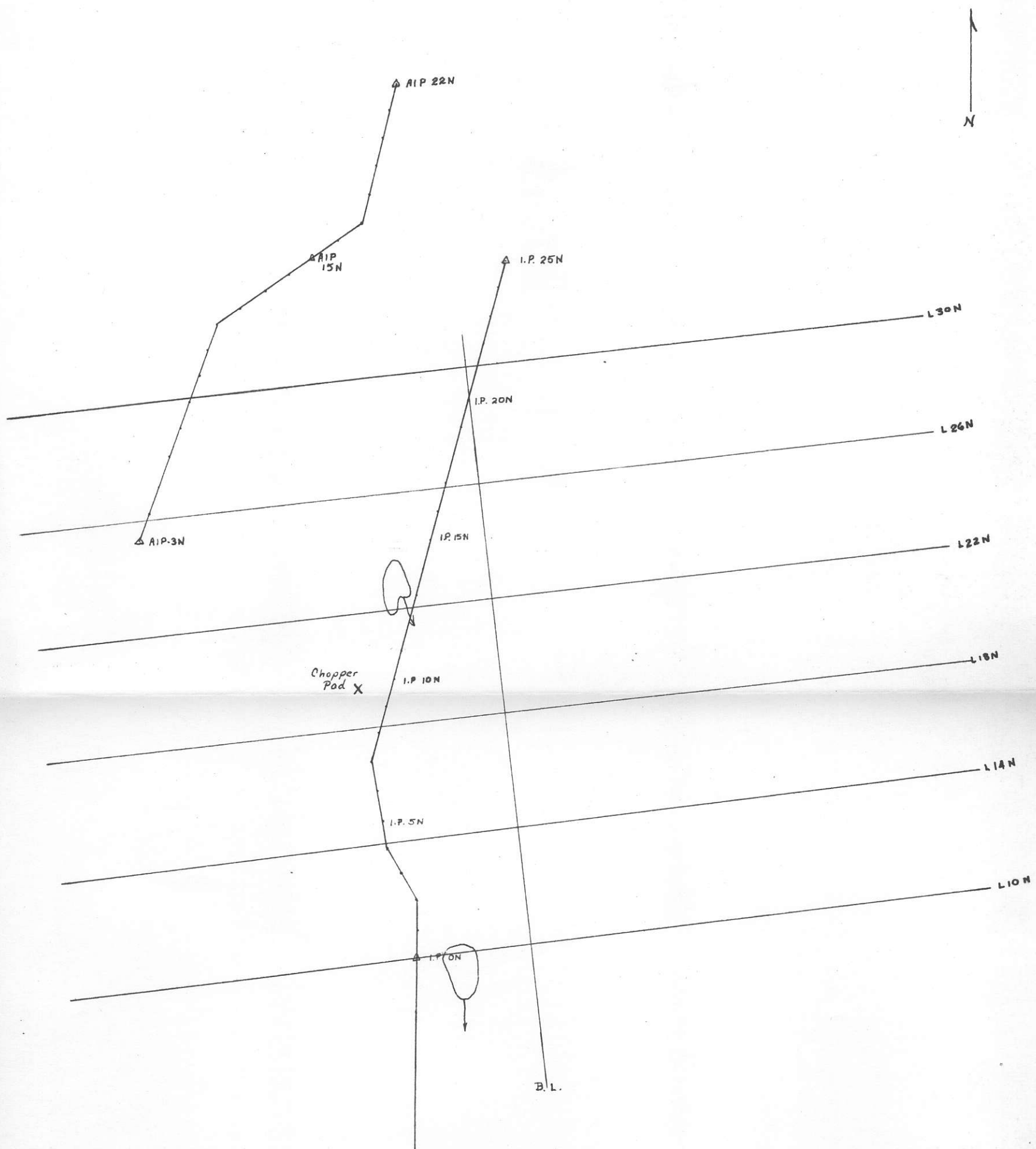
Portland Canal

Proposed I.P. Lines ---  
Magnetometer Anomaly #1 —  
Portland Canal scale: 1" = 1/4 mi.  
May 25/70





*ANOMOLY #1*  
*Magnetometer Profile*  
*on*  
*Proposed IP Line*  
*Scale 1" = 400'*



PROPOSED I.P. LINE  
 ANOMALY #1  
 PORTLAND CANAL, B.C.  
 JUNE 1970

SCALE 1"=400'