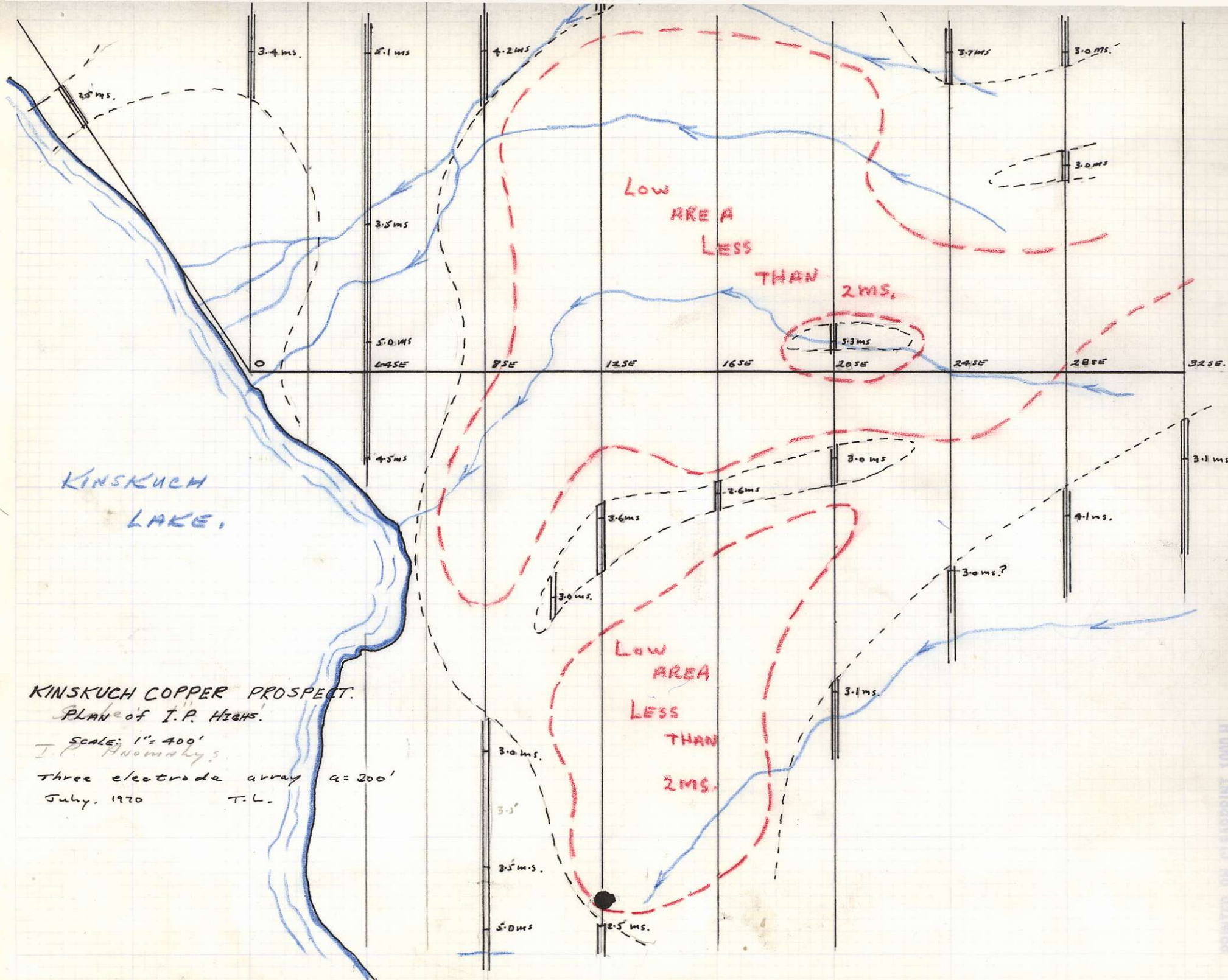


I.P. TEST. LINE. - (OVER MINERALIZATION)  
 XINSKUCH COPPER PROSPECT.  
 July, 1970.  
THREE ELECTRODE ARRAY a = 200 ft.  
 T.L.

FILMED ON STEVENS 1000 H

820120 103P



KINSKUCH  
LAKE.

KINSKUCH COPPER PROSPECT.  
 PLAN of I.P. HIGHS.  
 SCALE: 1" = 400'  
 I.P. Anomalous.  
 Three electrode array a = 200'  
 July, 1970 T.L.

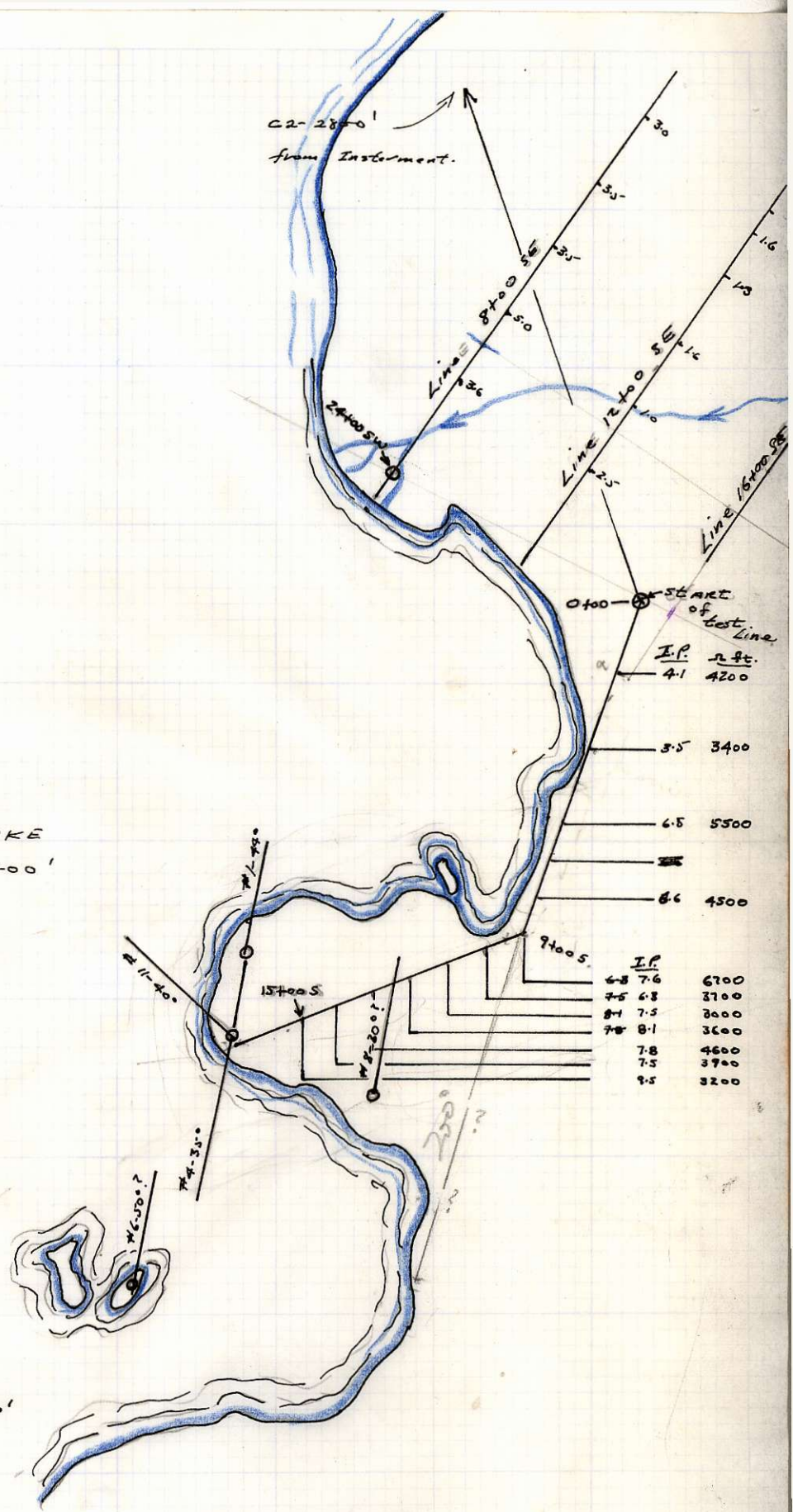
Low  
AREA  
LESS  
THAN  
2MS.

Low  
AREA  
LESS  
THAN  
2MS.

(TRUE) NORTH

KINSKUCH LAKE  
SCALE: 1" = 400'

KINSKUCH COPPER PROSPECT.  
PLAN OF TEST LINE.  
OVER MINERALIZATION  
THREE ELECTRODE ARRAY 2200'  
JULY 1970 T.L.



Dock

Camp Area

Volc. Re.  
Chl.-py Alt.

Kinskuch Lake

100

3800

L48E

L85E

L125E

L165E

L205E

L245E

L285E

4400

4000

3900

Base Line

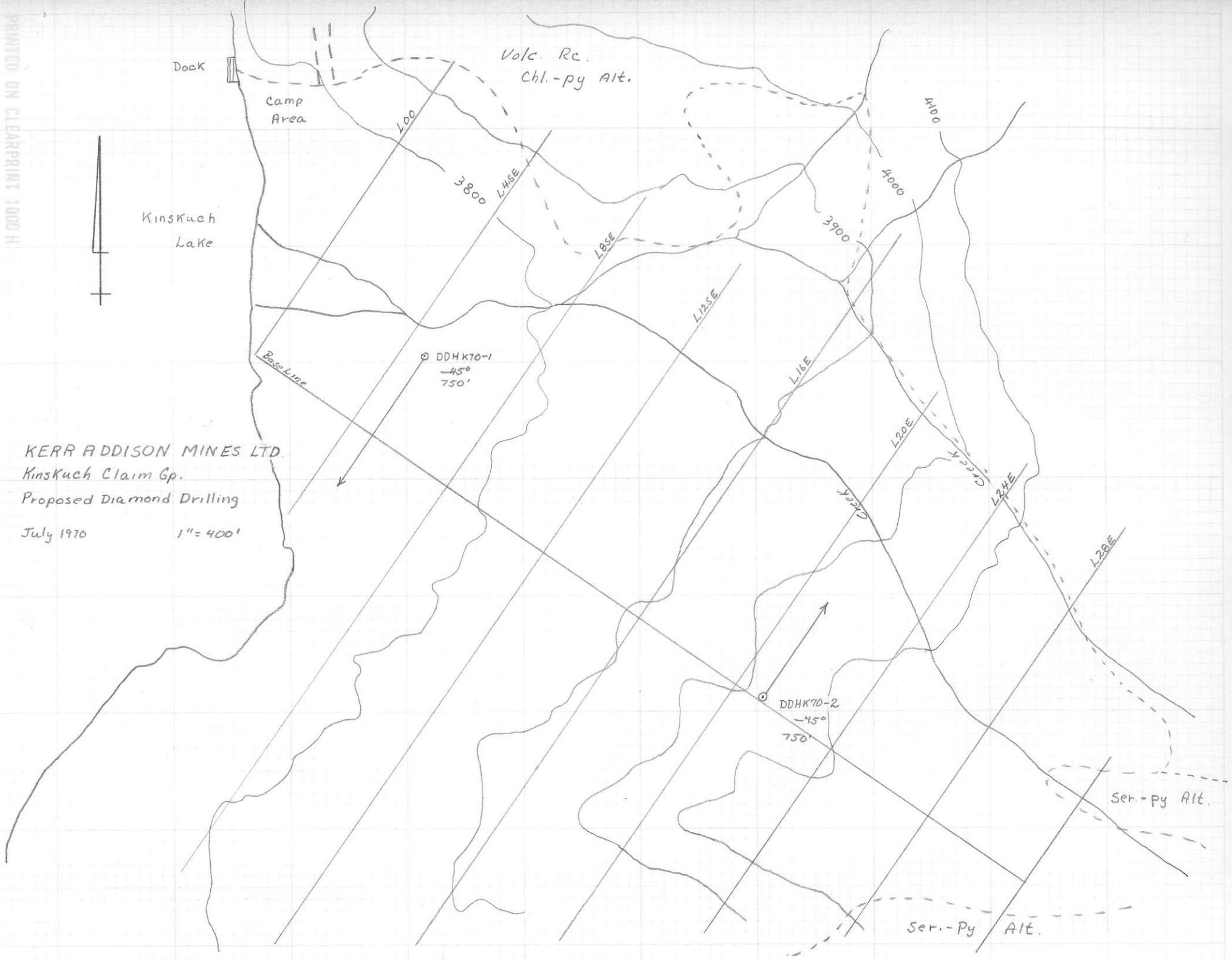
DDHK70-1  
-45°  
750'

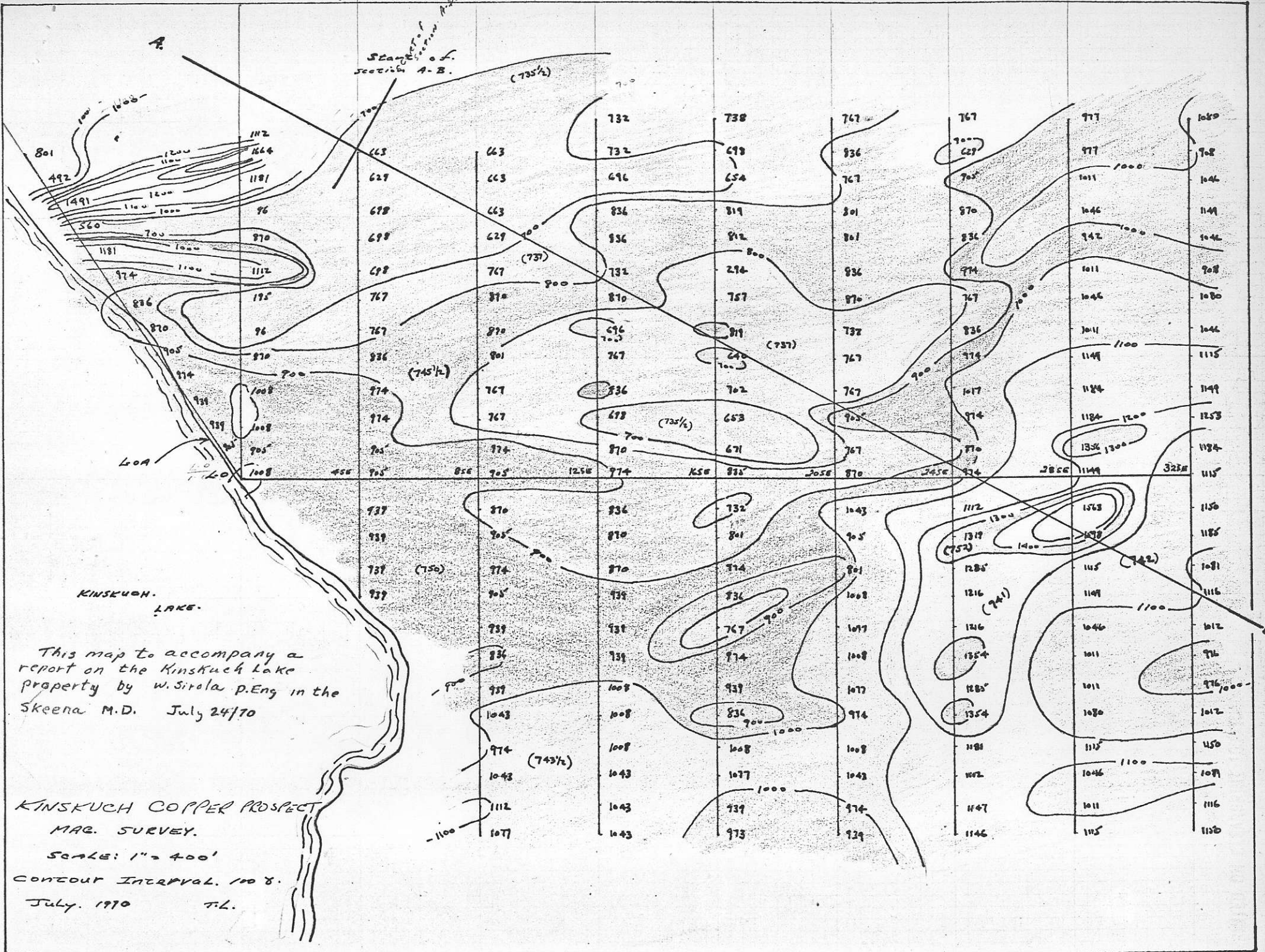
DDHK70-2  
-45°  
750'

Ser.-py Alt.

Ser.-py Alt.

KERR ADDISON MINES LTD.  
Kinskuch Claim Gr.  
Proposed Diamond Drilling  
July 1970 1" = 400'





This map to accompany a report on the Kinskuch Lake property by W. Sirola P. Eng in the Skeena M.D. July 24/70

KINSKUCH COPPER PROSPECT  
MAG. SURVEY.

SCALE: 1" = 400'  
CONTOUR INTERVAL. 100'.  
July. 1970 T.L.