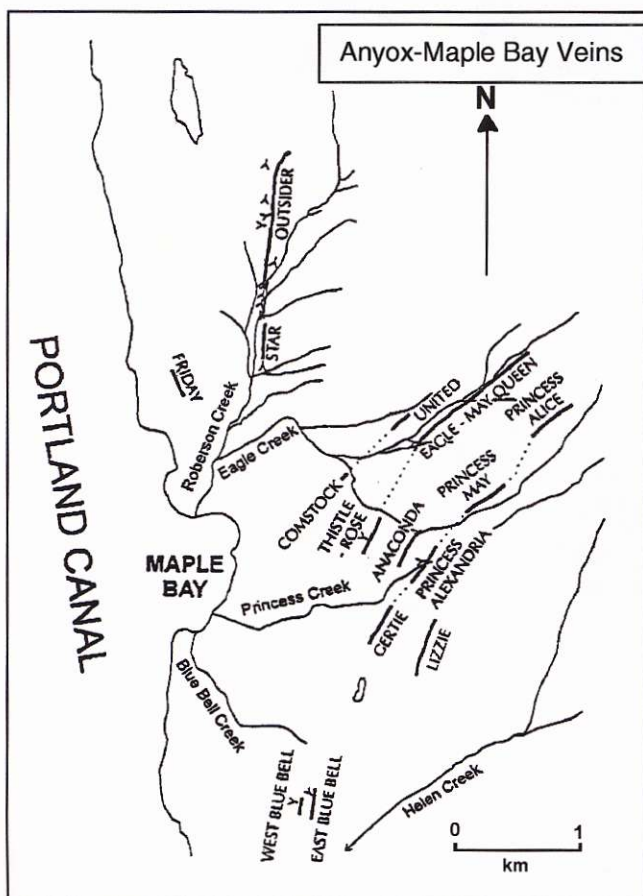
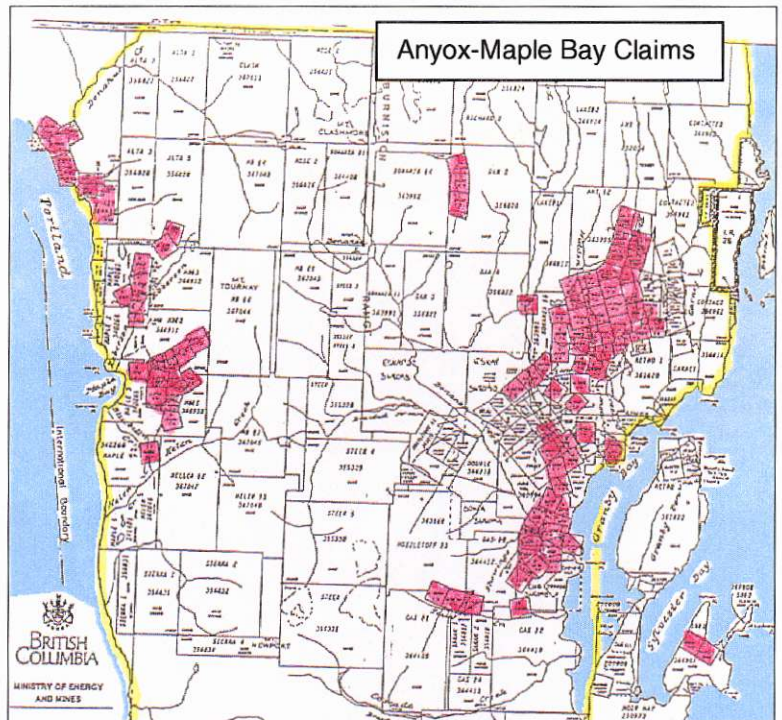


THE ANYOX-MAPLE BAY PROJECT

- Large past producing volcanogenic massive sulphide property and deposits in Coastal Northwestern British Columbia
- Historical production at Hidden Creek consisted of 24 million tons of smelter production at 5,000 tons/day
- Recorded production of 1.57% copper during the operation of the mine.

- Anyox is 100% controlled by a private exploration and development company based in Vancouver.
- Project area covers 1,300 km² in northwestern British Columbia.
- All claims involved are 100% controlled by the Company and are subject to a 1% NSR.
- The area has an extensive history of past producing mines, deposits, showings and mineral occurrences
- Past exploration includes work by Cominco, Mitsui, Granby Consolidated Mining, as well as many junior companies.



- Over 63,000 feet of drilling (both surface and underground) since 1937.
- Since 1985 over \$8 million has been spent on exploration and development of the area.
- Drilling shows that large volumes of copper mineralized rock are below and adjacent to previously mined ore
- In 1982 Mitsui defined 77 million tons of 0.55% copper mineralized material at Hidden Creek
- However, a report prepared for Mitsui and Cominco indicated that there was the potential to define a few hundred million tons of mineralized material within a 1 sq. km area near the Hidden Creek mine.
- The Company intends to actively explore this area using advanced airborne and ground geophysics
- The Company believes that there is the potential to increase the polymetallic resource potential of the Anyox and Maple Bay area to 500 million tons of 1% copper equivalent.

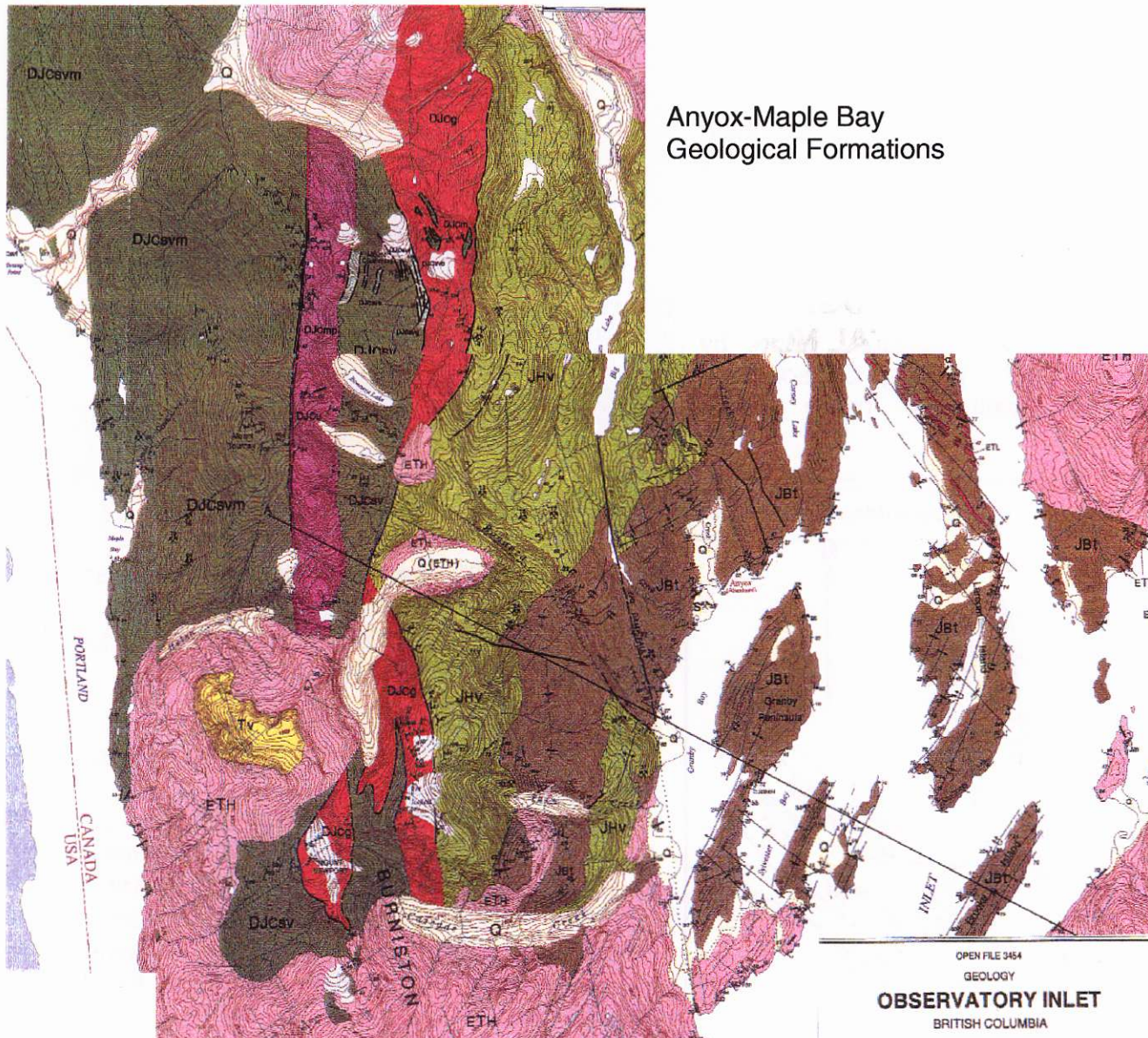
EXPERIENCED MANAGEMENT TEAM

The management team has strong technical and exploration expertise.

Management team includes: Steve Buchan, President, Norman Axten, Director.

Management/Technical/Advisory Committee: Richard Burke, Malcolm Fraser, Lu Manning, Rodney Samuels.

Consultants: G.H. Giroux, Grant Hendrickson, Jan Klein, Bernard Kremer, Jim Laker, Brad Marchant formerly of Triton Mining, Dr. Joe Montgomery, Steve Quin Executive Vice-President of Miramar Mining, and Dieter Schindelbauer.



Prepared on the Anyox-Maple Bay Project by
IBK Capital Corp.

The Exchange Tower, 130 King Street West, Suite 1180
Toronto, Ontario, Canada M5X 1E4

Phone: (416) 360 4505 Fax: (416) 360-8513

E-mail: Inquiries@IBKCapital.com Web: www.IBKCapital.com