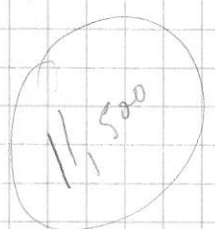
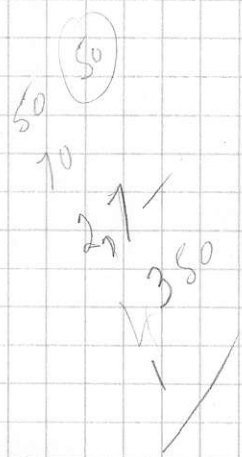


Design Pit	.12 Mill Cut-off			.14 Mill Cut-off		
	Tons Ore	Grade	Tons LG+Waste	Tons Ore	Grade	Tons LG+W
18 West	4,274,000 ✓	.190 ✓	1,516,000 ✓	5,483,000 ✓	.199 ✓	2,307,000 ✓
18 East	8,030,000 ✓	.213 ✓	2,238,000 ✓	6,161,000 ✓	.239 ✓	4,107,000 ✓
16 West	8,240,000	.180	6,603,000	7,016,000	.188	7,826,000
16 East	9,460,000	.217	11,633,000	7,407,000	.247	13,916,000
14 West	5,465,000	.171	6,311,000	3,903,000	.187	7,861,000 ✓
19 East	6,217,000	.192	14,029,000	4,395,000	.218	15,851,000 ✓
.12 West	17,952,000	.173	26,268,000	13,308,000	.187	28,957,000
.12 East	12,052,000	.193	31,398,000	9,413,000	.218	33,540,000
	73,690		11,500	57,086,000		124,364,000



20,000,000

Ratio.

1 : 2.5

32
26