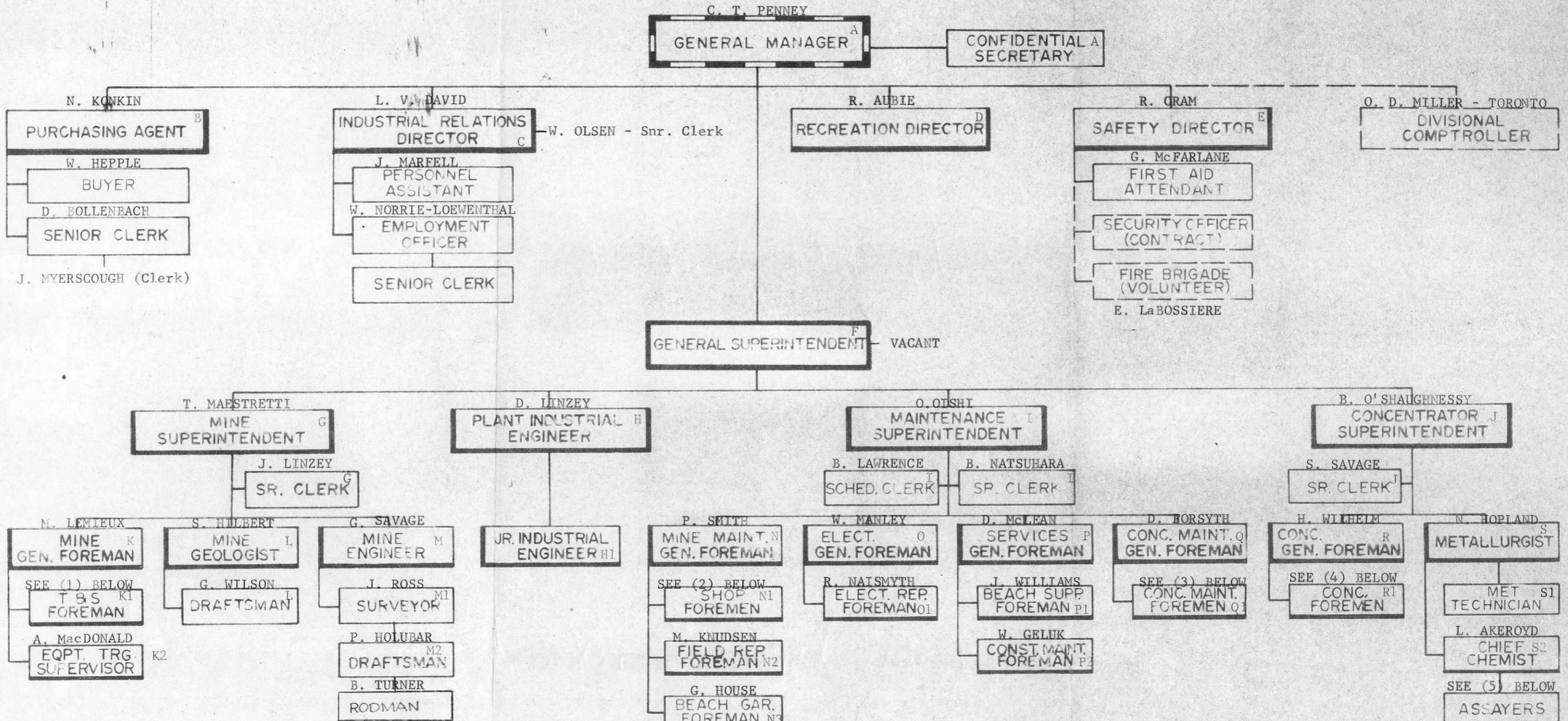


BRITISH COLUMBIA MOLYBDENUM LTD

ORGANIZATIONAL STRUCTURE AUGUST 1970



- (1) A. MORRIS
R. WOODEY
W. LARMOUR (SAFETY)

- (2) P. JANZEN
R. HANNA
F. BREWILL

- (3) R. SCHWARTZ
J. WHEATLEY

- (4) W. KLINGBELL
E. LaBOSSIERE
R. LUNMAN
W. BROWNING

- (5) V. JOHNSON
G. ROSS
D. MARFELL

CATEGORY	A	B	C	D	E	F	G	H	H1	I	J	K	K1	K2	L	M	M1	M2	N	N1	N2	N3	O	O1	P	P1	P2	Q	Q1	R	R1	S	S1	S2	TOTAL
EXEMPT	2	1	3	1	1	1	1	1	3	1	1	1	3	1	1	1	1	1	1	3	1	1	1	1	1	1	1	2	1	5	1	1	46		
NON-EXEMPT		2	1		1					2	1				1			1													1	4		15	
HOURLY													66						33	9	8		12		11	12		14		31			196		
VSA												7							4								2		4				17		
TOTAL	2	3	4	1	2	1	2	1	3	3	2	1	76	1	2	1	1	1	40	10	9	1	13	1	12	13	1	18	1	40	1	1	5	274	

RECOMMENDED BY _____
 RECOMMENDED BY _____
 APPROVED BY _____