

820025

Property Submission

MAY 25 1971

102 ~~21~~/5

J.H.S.	
P.M.K.	✓
G.M.H.	✓
R.D.S.	
B.C.B.	
I.D.B.	
M.D.R.	
J.H.F.	
E.C.J.	

To G.M. Hogg

Quatsino Syndicate:- Teeta

Subject QUATSINO SYNDICATE Neroutsos Inlet

Creek Copper deposit - Neroutsos Inlet - North Vancouver Island

20, 1971.

May 20 1971

Reports and maps were supplied by Jim Billingsley who is a member; the other members are Newmont Mining Corporation and Can-fer Mines Limited.

The syndicate appears to have been incorporated late in 1967 or early in 1968 and upon ratification it was agreed that by January 1, 1972 a four million share public company was to be formed. Newmont controls 50% of the syndicate and Can-fer and Billingsley each have 25%. No work has been done since October 1968 and Billingsley is attempting to find other participants to carry on where Newmont and Can-fer left off. Such a newcomer could earn a 25% interest by expending the sum of \$125,000 and could increase this interest to 50% by spending \$1,000,000. These terms should not be considered gospel but were so described to the writer by Billingsley.

After the syndicate was formed reconnaissance prospecting and stream sediment sampling was conducted on the west side of Neroutsos Inlet and culminated in the staking of 82 mineral claims covering two anomalous areas (see Figure 1). These are staked on both sides of Teeta Creek adjacent to an old crown granted group of mineral claims. A second group, the Judys, were staked six miles northwest of the Star group and tie on to the Yreka property on the northwest. Yreka was a small tonnage contact metamorphic copper deposit which was mined out approximately ten years ago.

During the months of June to August 1968 the Star group was subjected to a program of geological mapping, magnetic surveying, soil and stream silt geochemistry, and finally to a program of diamond drilling which consisted of five holes totalling 2,910 feet. The operation was shut down in October of that year.

Generalized mapping was done by H.C.B. Leach and more detailed mapping by T. Takeda. This mapping indicated that the Star group is underlain by a complex of diorite-gabbro and dacitic intrusions. These rocks are intrusive into Triassic volcanics and sediments. Within the dacitic intrusions are biotite-sulphide zones which were diamond drilled and found to contain small quantities of chalcopyrite and molybdenite. The copper values in these drill holes ranged from .15% to 0.40% with 56% in the 0.15% range, 37½% in the 0.15 to 0.30% range and 6½% in the 0.30 to 0.40% range. The molybdenite content averaged 0.015%.

820025

MAY 25 1971

## KERR ADDISON MINES LIMITED

(FOR INTER-OFFICE USE ONLY)

J.H.S.	
P.M.K.	✓
G.M.H.	✓
R.D.S.	
B.C.B.	
I.D.B.	
M.D.R.	
J.H.F.	

To G.M. Hogg From W.M. Sirola

Subject QUATSINO SYNDICATE, Teeta Creek,  
Neroutsos Inlet, North end Vancouver Island, B.C. Date May 20, 1971.

Reports and maps describing the work of this syndicate were supplied by Jim Billingsley who is a member and instigator of the syndicate; the other members are Newmont Mining Corporation and Can-fer Mines Limited.

The syndicate appears to have been incorporated late in 1967 or early in 1968 and upon ratification it was agreed that by January 1, 1972 a four million share public company was to be formed. Newmont controls 50% of the syndicate and Can-fer and Billingsley each have 25%. No work has been done since October 1968 and Billingsley is attempting to find other participants to carry on where Newmont and Can-fer left off. Such a newcomer could earn a 25% interest by expending the sum of \$125,000 and could increase this interest to 50% by spending \$1,000,000. These terms should not be considered gospel but were so described to the writer by Billingsley.

After the syndicate was formed reconnaissance prospecting and stream sediment sampling was conducted on the west side of Neroutsos Inlet and culminated in the staking of 82 mineral claims covering two anomalous areas (see Figure 1). These are staked on both sides of Teeta Creek adjacent to an old crown granted group of mineral claims. A second group, the Judys, were staked six miles northwest of the Star group and tie on to the Yreka property on the northwest. Yreka was a small tonnage contact metamorphic copper deposit which was mined out approximately ten years ago.

During the months of June to August 1968 the Star group was subjected to a program of geological mapping, magnetic surveying, soil and stream silt geochemistry, and finally to a program of diamond drilling which consisted of five holes totalling 2,910 feet. The operation was shut down in October of that year.

Generalized mapping was done by H.C.B. Leach and more detailed mapping by T. Takeda. This mapping indicated that the Star group is underlain by a complex of diorite-gabbro and dacitic intrusions. These rocks are intrusive into Triassic volcanics and sediments. Within the dacitic intrusions are biotite-sulphide zones which were diamond drilled and found to contain small quantities of chalcopyrite and molybdenite. The copper values in these drill holes ranged from .15% to 0.40% with 56% in the 0.15% range, 37½% in the 0.15 to 0.30% range and 6½% in the 0.30 to 0.40% range. The molybdenite content averaged 0.015%.

# KERR ADDISON MINES LIMITED

(FOR INTER-OFFICE USE ONLY)

To G.M. Hogg

From W.M. Sirola

Subject Quatsino Syndicate - PAGE 2

Date May 20, 1971.

The assay results are such that the copper-molybdenite content of the rocks might be considered interesting, but one would hesitate to recommend any major involvement in the syndicate on the basis of these values. Leach concluded that perhaps more work ought to be done in overburdened areas to the northeast of the known mineralization, but parts of this area are covered by a capping of younger volcanics which pose a threat in more ways than one.

The regional geological map indicates that both groups of claims could lie within a limestone belt trending northwesterly along the south side of Neroutsos Inlet, but no limestone was encountered in the course of the mapping and the likelihood of contact type deposits occurring on these properties appears small.

The property is somewhat reminiscent of our Ramsey Creek claims which appeared to justify a considerable effort on our part but which thus far have turned out to contain the sort of "teaser" mineralization such as was found by the Quatsino Syndicate.

My recommendation for the time being at least is not to participate in the Quatsino Syndicate.

WMS/jm

*Bill*  
W.M. Sirola.

Enclosures:

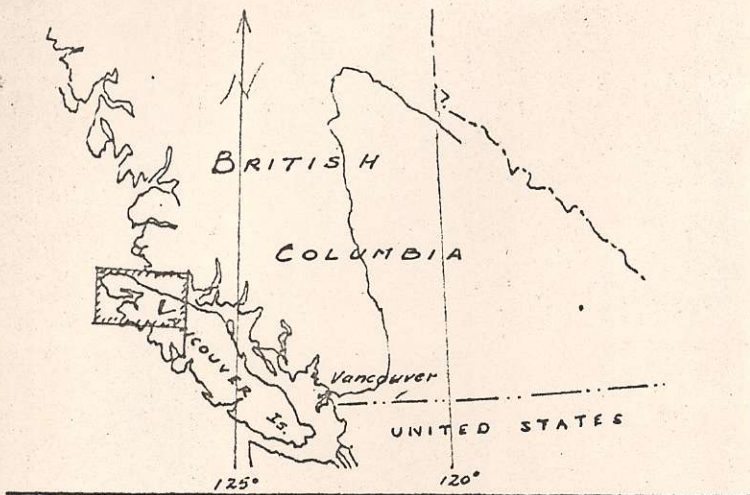
- (1) Key Map - scale 1:500,000
- (2) Claim Location Map (Figure 1) - scale 1" = 2 miles
- (3) General Geology Teeta Creek Area - scale 1" = 1,500 feet

*I agree with Bill  
Sirola's negative recommendation  
for the present.*

*G.M. Hogg May 25/71*

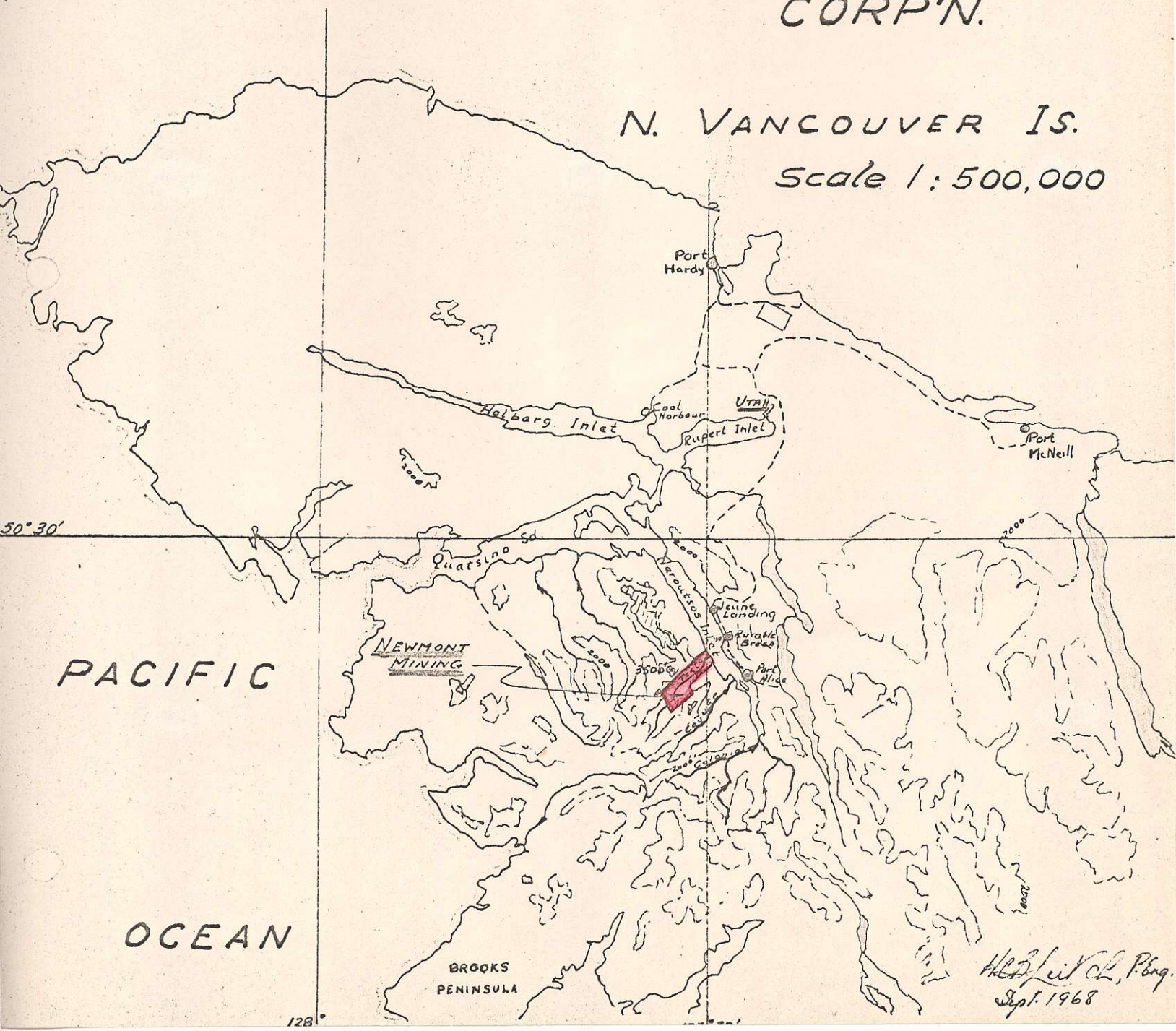
*I agree  
1/MLK  
May 25/71*

# KEY MAP

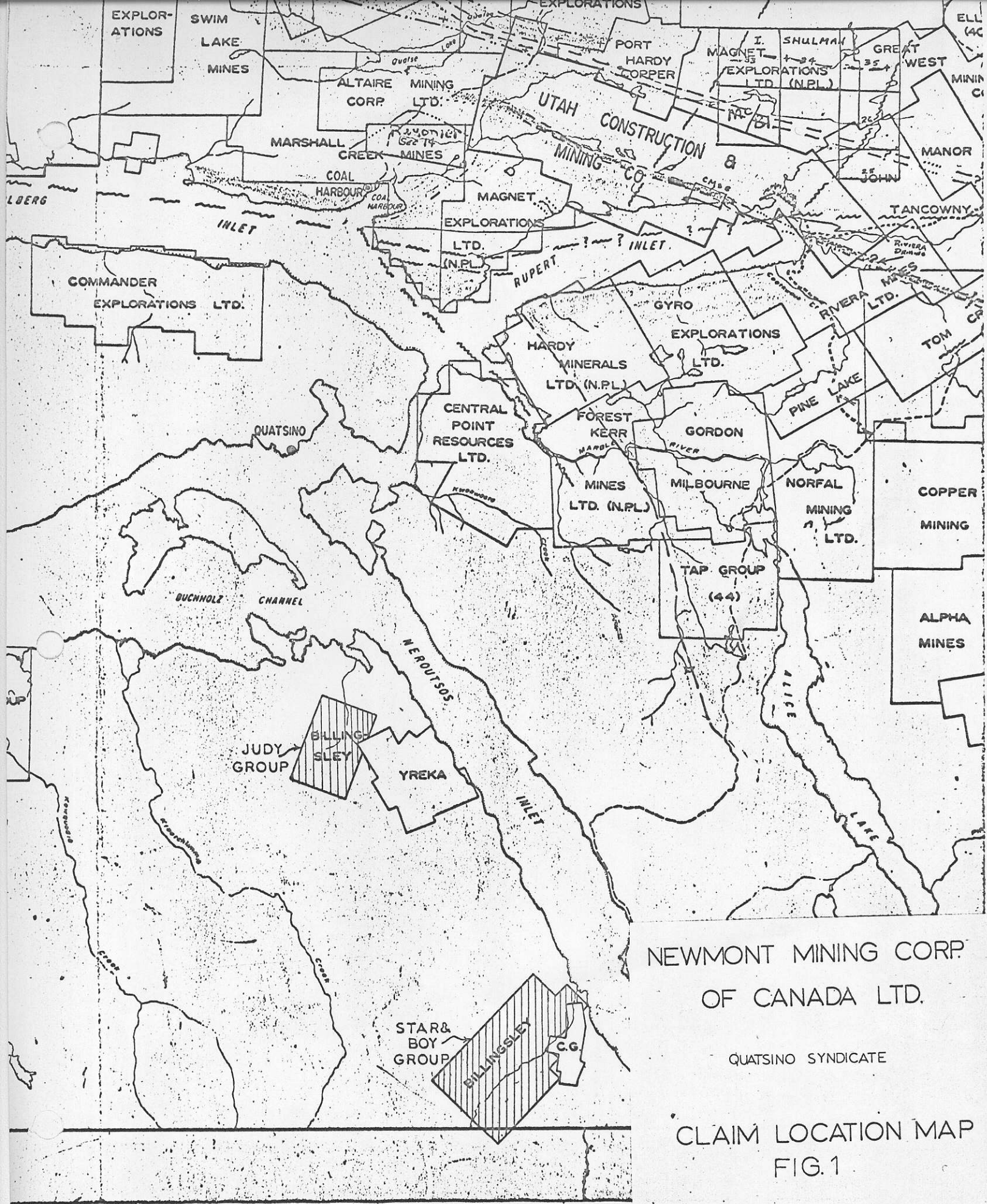


# LOCATION MAP TEETA CREEK PROPERTY NEWMONT MINING CORP'N.

N. VANCOUVER IS.  
Scale 1:500,000



*Handwritten signature and date:*  
H.C. [Signature], P. Eng.  
Sept. 1968

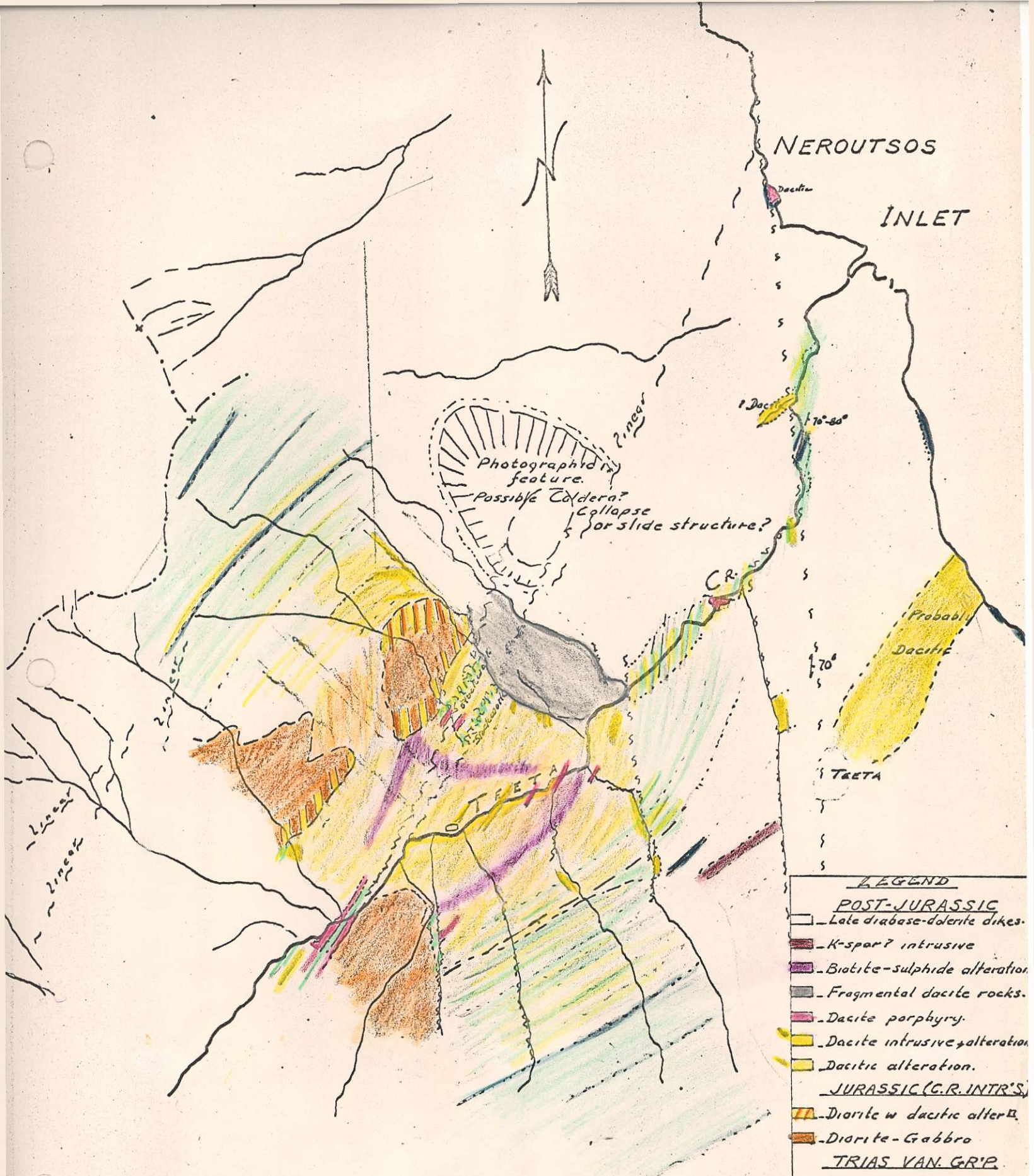


NEWMONT MINING CORP.  
OF CANADA LTD.

QUATSINO SYNDICATE

CLAIM LOCATION MAP  
FIG. 1





GENERAL GEOLOGY

TEETA CREEK AREA

Scale: 1" = 1500'

- LEGEND
- POST-JURASSIC
- Late diabase-dolerite dikes.
  - K-spar? intrusive
  - Biotite-sulphide alteration
  - Fragmental dacite rocks.
  - Dacite porphyry.
  - Dacite intrusive, alteration
  - Dacitic alteration.
- JURASSIC (C.R. INTR'S.)
- Diorite w dacitic alter.
  - Diorite-Gabbro
- TRIAS VAN. GR.P.
- Volcanics w. dacitic alteration
  - Black basalt.
  - Kermutsen andesite-basalt.

H.B. Leitch  
Sept. 1968 P. Eng.