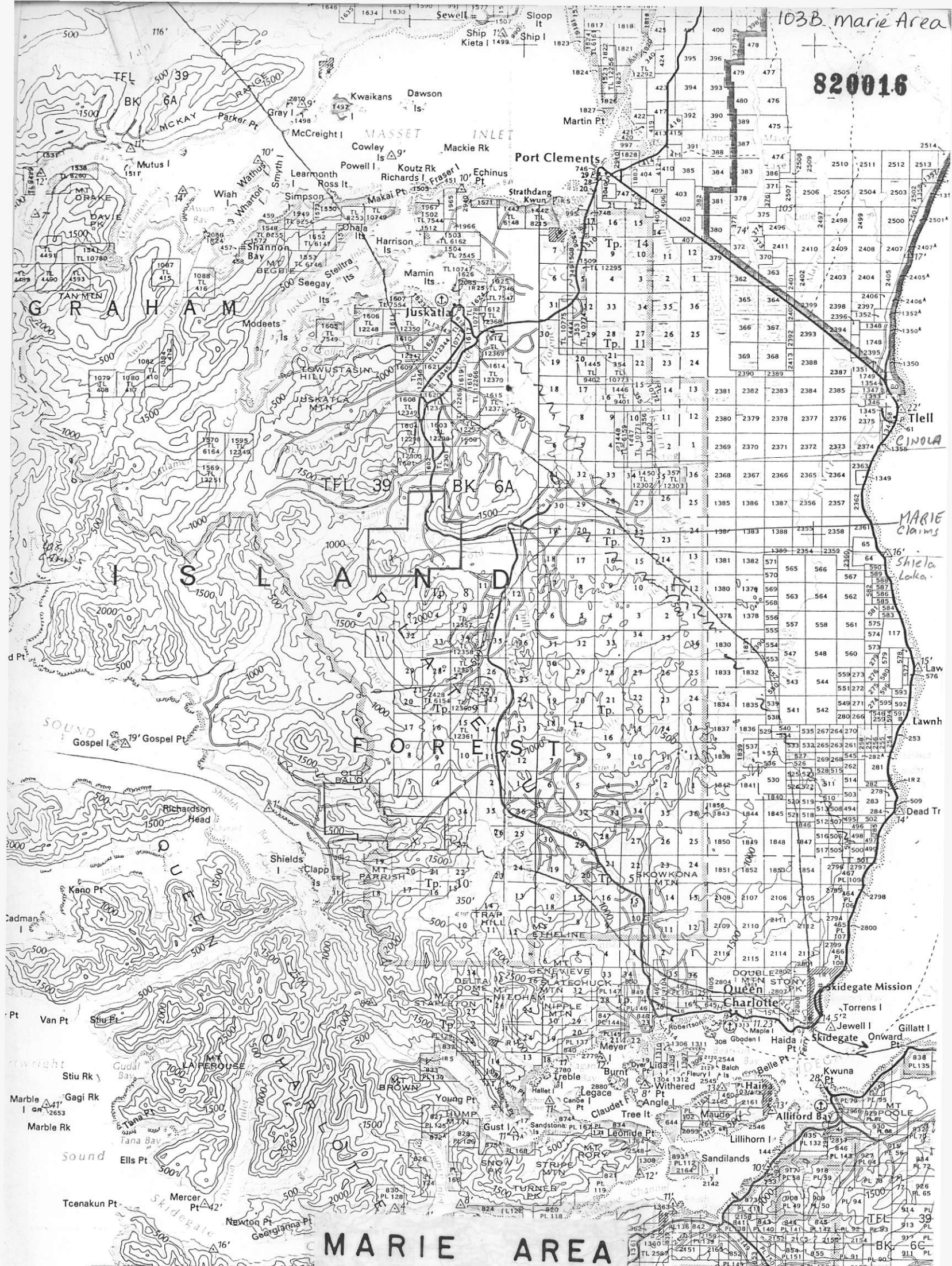


103B Marie Area

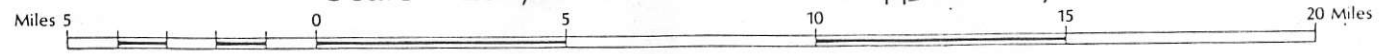
820016



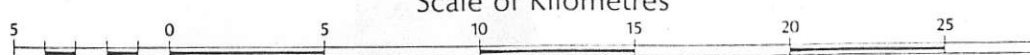
GRAHAM ISLAND

BRITISH COLUMBIA
 QUEEN CHARLOTTE LAND DISTRICT

Scale 1:250,000 or 1 Inch to 4 Miles approximately



Scale of Kilometres



J M T SERVICES CORP

MARIE AREA

GEOLOGY & ALTERATION

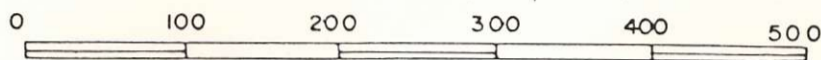
Many Years 1 - 4 Old Trail Prospector
and old Prospector mineral claims

SKEENA MINERAL DIVISION

QUEEN CHARLOTTE ISLANDS

NTS 103 F - 8W & 9W

SCALE 1 : 5,000

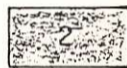


METERS

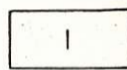
FIG. 1

LEGEND

..... Unconformity



Diorite. Cretaceous ?



Argillite, siltstone, sandstone
H hornfels.



Many local zones pyrite -
silicification with chalcedony
veinlets.



intense silicification ± pyrite
with chalcedony veinlets.

PROPOSED ROAD ————

S Silicification

Q Silification with chalcedonic
quartz veins.

T Tourmalinization

// Quartz structure

MASSET FORMATION Tertiary

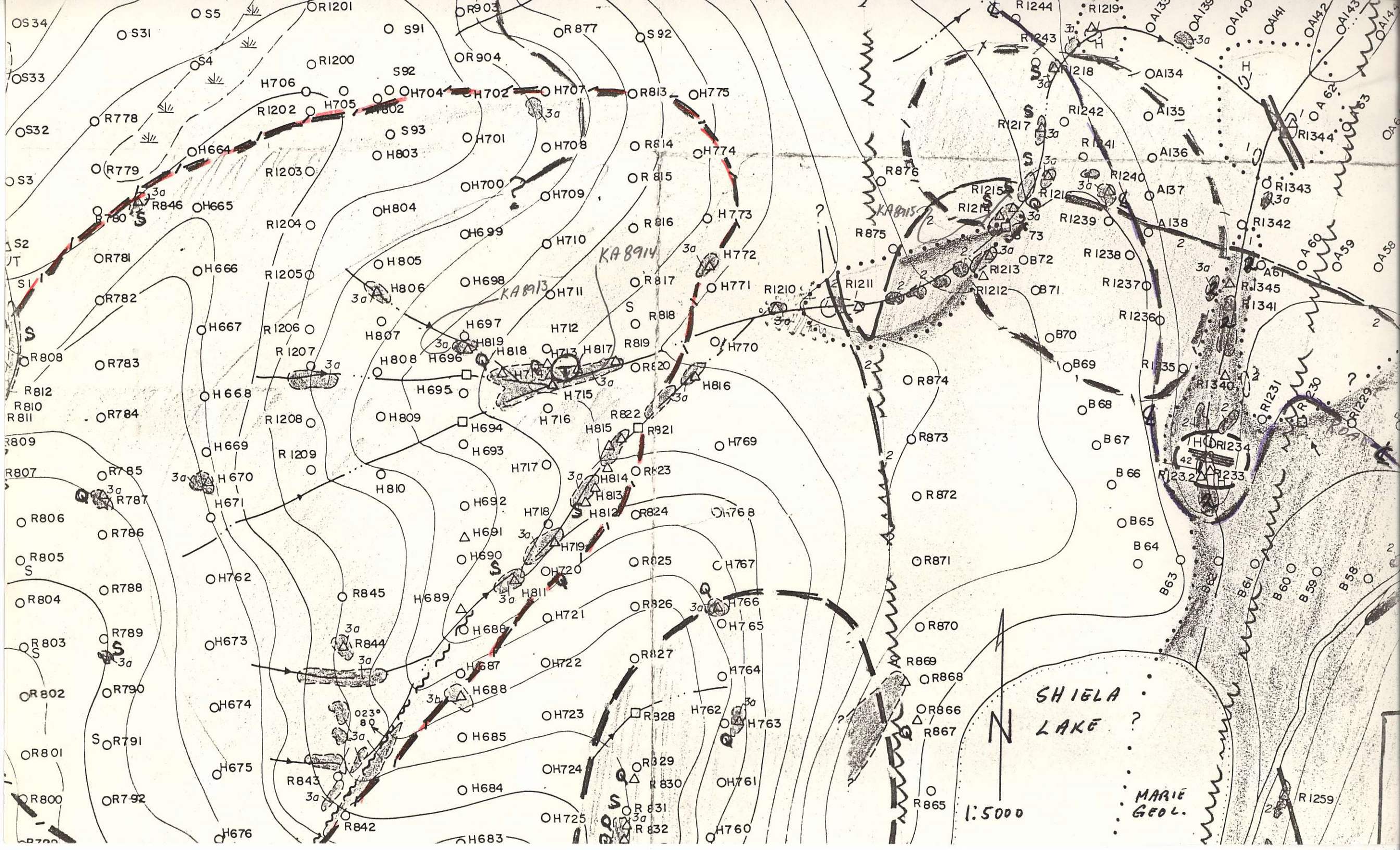


felsic breccias some massive units.

mixed felsic and calcareous argillite breccia

porphyritic dacite

andesite, dacite, basalt flows, breccia, tuffs.



J M T SERVICES CORP

MARIE AREA

ARSENIC GEOCHEMISTRY

Many Years 1 — 4 Old Trail Prospector
and old Prospector mineral claims

SKEENA MINERAL DIVISION

QUEEN CHARLOTTE ISLANDS

NTS 103 F — 8W & 9W

SCALE 1: 5,000

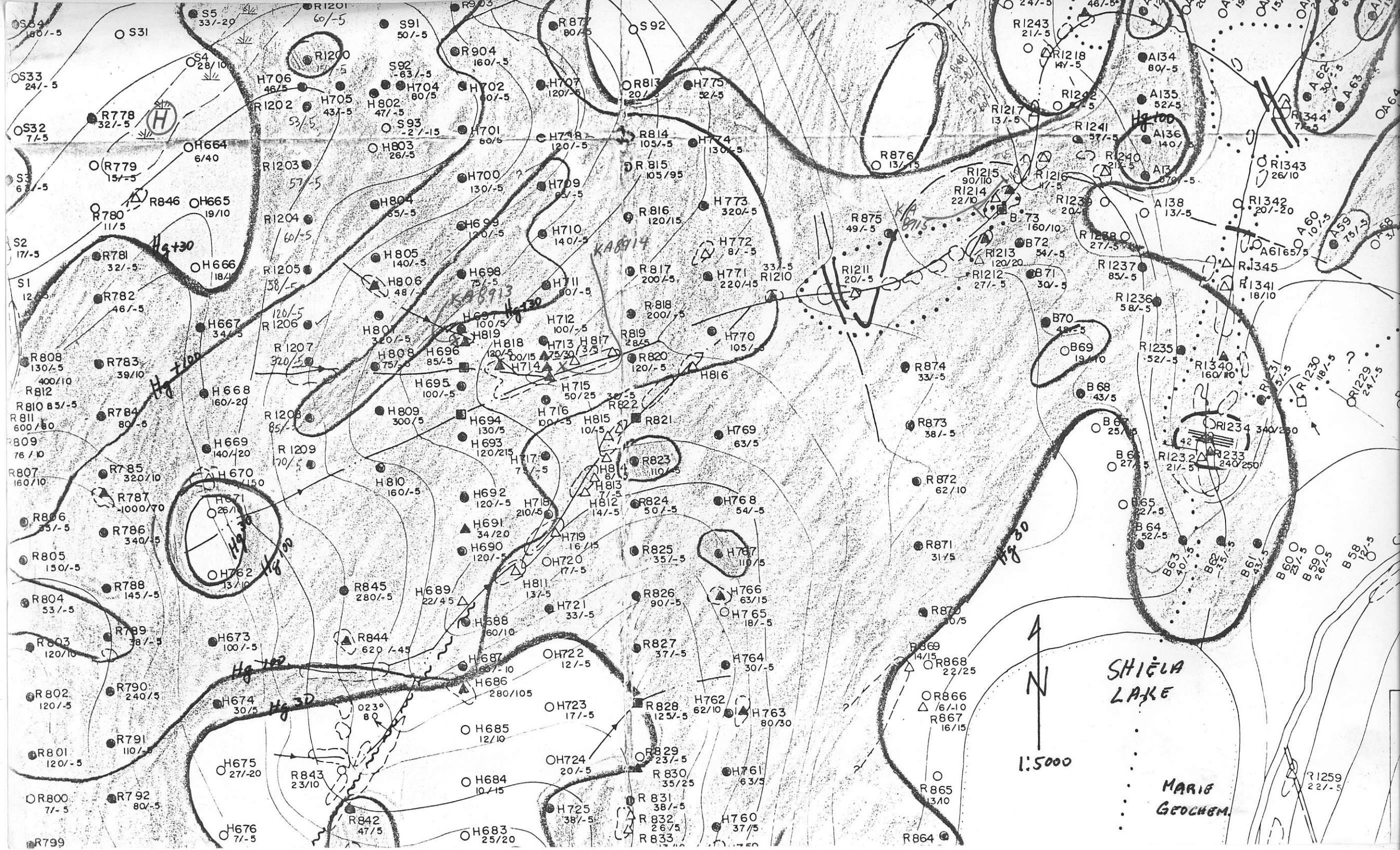


FIG. 4

LEGEND.

- O T 52 Sample location number
- 19/5 Arsenic (ppm) / Gold ppb
- 19/59/5 Arsenic (ppm) / Mercury (ppb) / Gold (ppb)

- O Soil sample
- silt sample
- Δ Rock sample.
- X K.A. 8913
Kerr Addison rock sample



SHIELA
LAKE



1:5000

MARIE
GEOCHEM.

Hq+30

Hq+100

Hq+200

Hq+300

KAB914

KAB913

KAB912

KAB911

