

132°00'

45'

820012

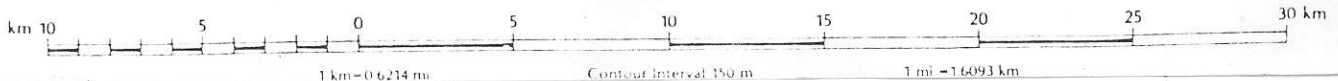


APRIL CLAIMS.

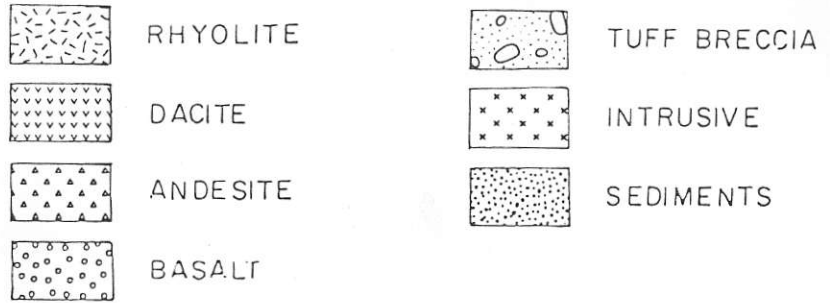
MORESBY ISLAND

QUEEN CHARLOTTE LAND DISTRICT

Scale 1:250 000
(1 cm = 2.5 km)



C I F I C



OUTCROP LEGEND

VOLCANICS

- 1 RHYOLITE — UNDIVIDED
- 1a — FLOW
- 1b — DIKE
- 1c — PORPHYRY
- 1d — TUFF
- 1e — LAPILLI
- 1f — FRAGMENTAL
- 1g — AGGLOMERATE
- 2 DACITE — AS ABOVE
- 3 ANDESITE — AS ABOVE
- 4 BASALT — AS ABOVE
- 5 TUFF BRECCIA

INTRUSIVES

- 6 GRANITE, GRANODIORITE
- 7 DIORITE, QUARTZ DIORITE
- 8 GABBRO

SEDIMENTS

- 9a CONGLOMERATE
- 9b ARKOSE
- 9c SANDSTONE
- 9d SILTSTONE
- 9e SHALE
- 9f ARGILLITE

CONTOUR INTERVAL 500 FEET

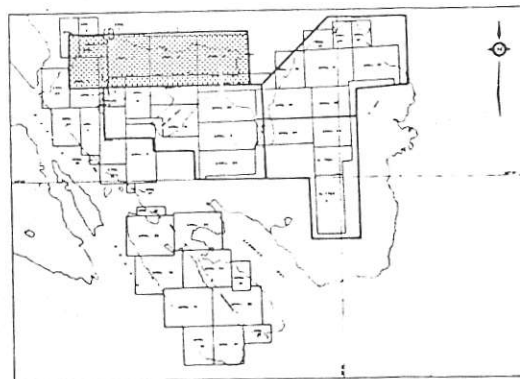


FIGURE 5-1

DRAWN WSP	SCALE 1:10,000	PLACER DEVELOPMENT LIMITED	GEOLOGY
TRACED JS	DATE OCT 1981	QUEEN CHARLOTTE ISLANDS	
NTS 93 B 12		APRIL PROPERTY	
			FILE NO 81-10-V-168-



Figure 5-1

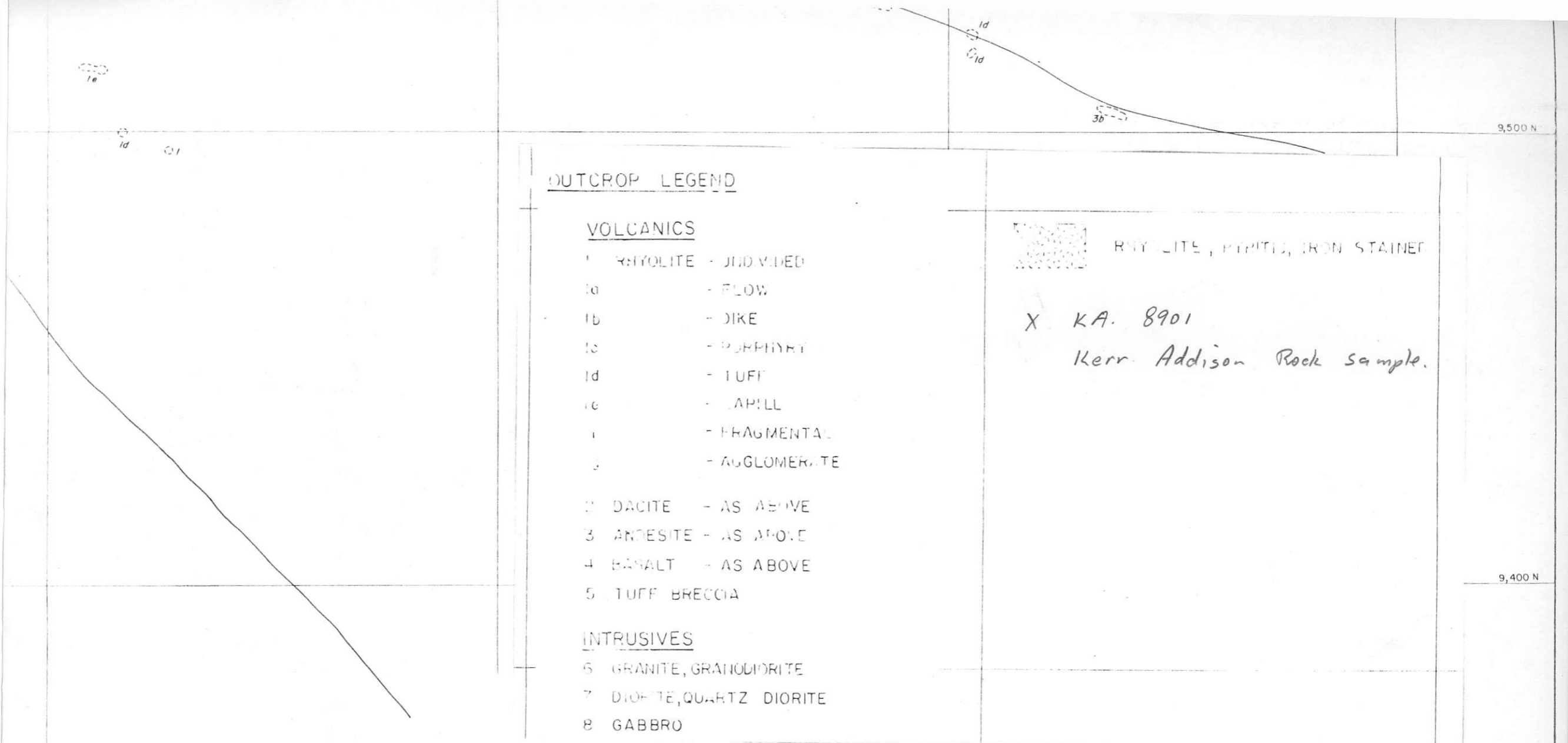


FIGURE 8

DRAWN W S P	SCALE 1:1000	PLACER DEVELOPMENT LIMITED	GEOLOGY AND DRILL HOLE LOCATION MAP
TRACED W S	DATE NOV 1981	QUEEN CHARLOTTE ISLANDS APRIL PROPERTY	
			FILE NO.

10.301.2

10,000E

10,100E

CAMP
AREA

3, 2 d
BRECCIA

?

X KA 8901

LINE 8

LINE 10

X KA 8902

80-11(-60°)

81-14(-60°)

81-13(-90°)
O EL 68.5m

fig Bb
overlap

81-11(-60°)

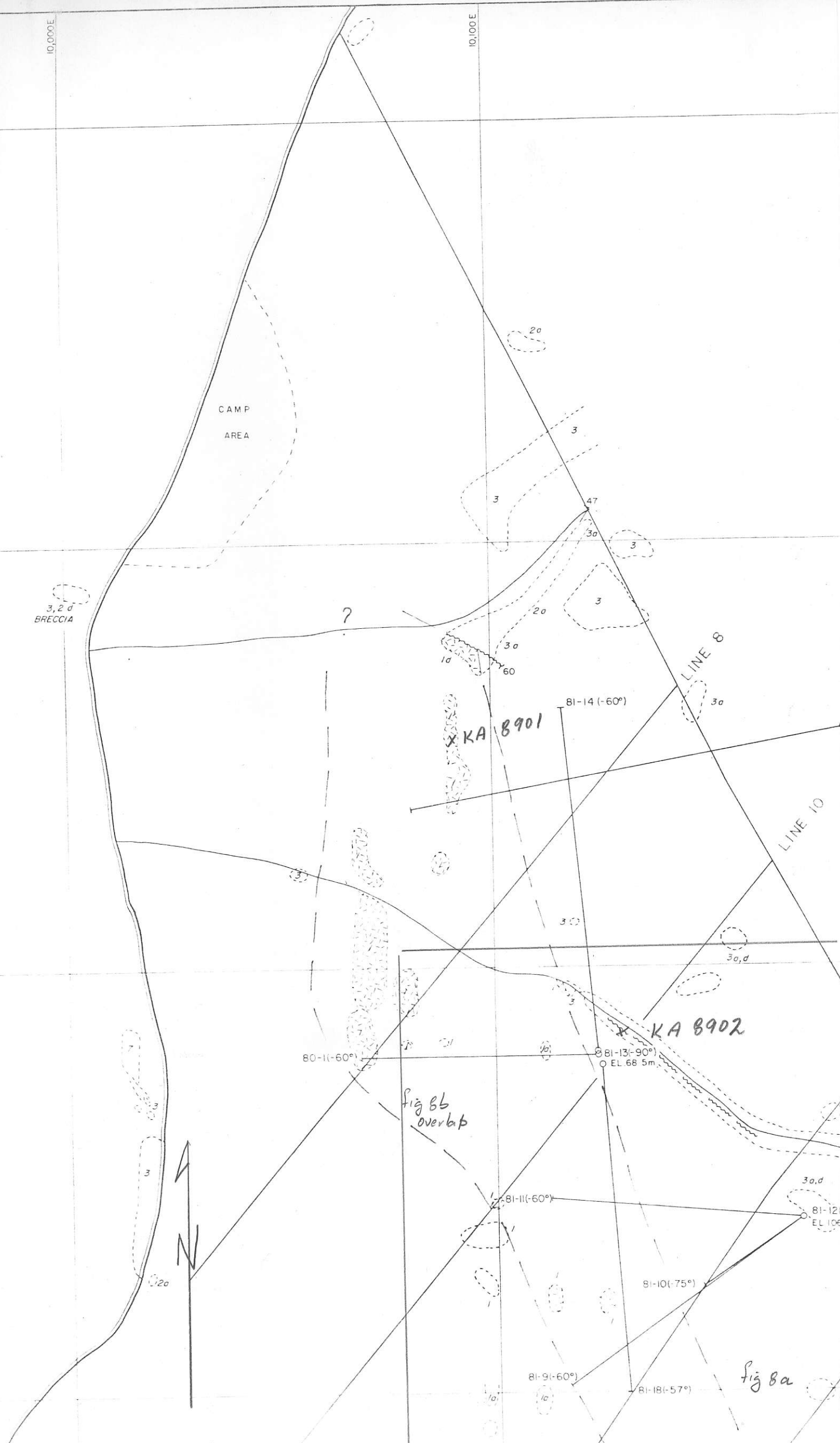
81-12
EL 106

81-10(-75°)

81-9(-60°)

81-18(-57°)

fig Ba



GOLD GEOCHEMISTRY

- □ △ 0 - 24 ppb Au.
- ■ ▲ 25 - 49 ppb Au.
- ⊙ ⊠ ▲ 49 ppb Au.

△ Arsenic (As), Gold (Au)
25, 200 ppm ppb

X KA B901
Kerr Addison rock sample

- ~~~~~ Fault
- /— Strike, dip
- , ⊠ Soil sample, silt sample
- △ Rock geochem sample
- ⊕ Outcrop

JMT SERVICES CORP.

APRIL PROPERTY

Queen Charlotte Islands NTS 103 B - 3 / E

MAIN SHOWING

GOLD GEOCHEMISTRY

SCALE 1:1000

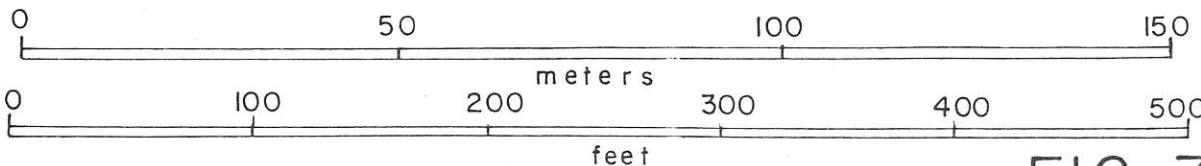


FIG. 7

RICHARDSON

Andesite to dacite tuff

20 W-88N

OE-850N

KA 8901

OE-857N
+500/550
OE-850N
360/215
OE-865N
160/80
OE-860N
OE-855N
370/90
OE-845N

strong pyrite

10W-835N
89/30

10W-830N
58/50

5W-825N
95/10

SE-840N
340/75

10E-835N
85/20

OE-830N
6/15

OE-825N

15E-825N
+500/80

OE-800N
29/35

OE-802N

830N
7/20

810N
75/450

805N

KA 8902

very strong silification

800N
26/40

780N
100/40

767N
175/325

80-T-55
60/5

775N
6/30

B.L. 750 N

P 750 N
17/70

Min. Float

Silicic zone

P 735 N
36/2800

P 20E
5/15

P 50E
38/30

pyrite, ct

Lt. gn. rhy. dacite tuff.

750 N

T-52

725 N
20/5

T54
34/10

P 700 N
8/5

700 N
14/20

700
25/45

675 N
54/105

T 53
26/20

100E
690N
80/140

675N
210/565

650 N

P 650 N
19/-5

650 N
5/15

2950 Au

625N
5/10

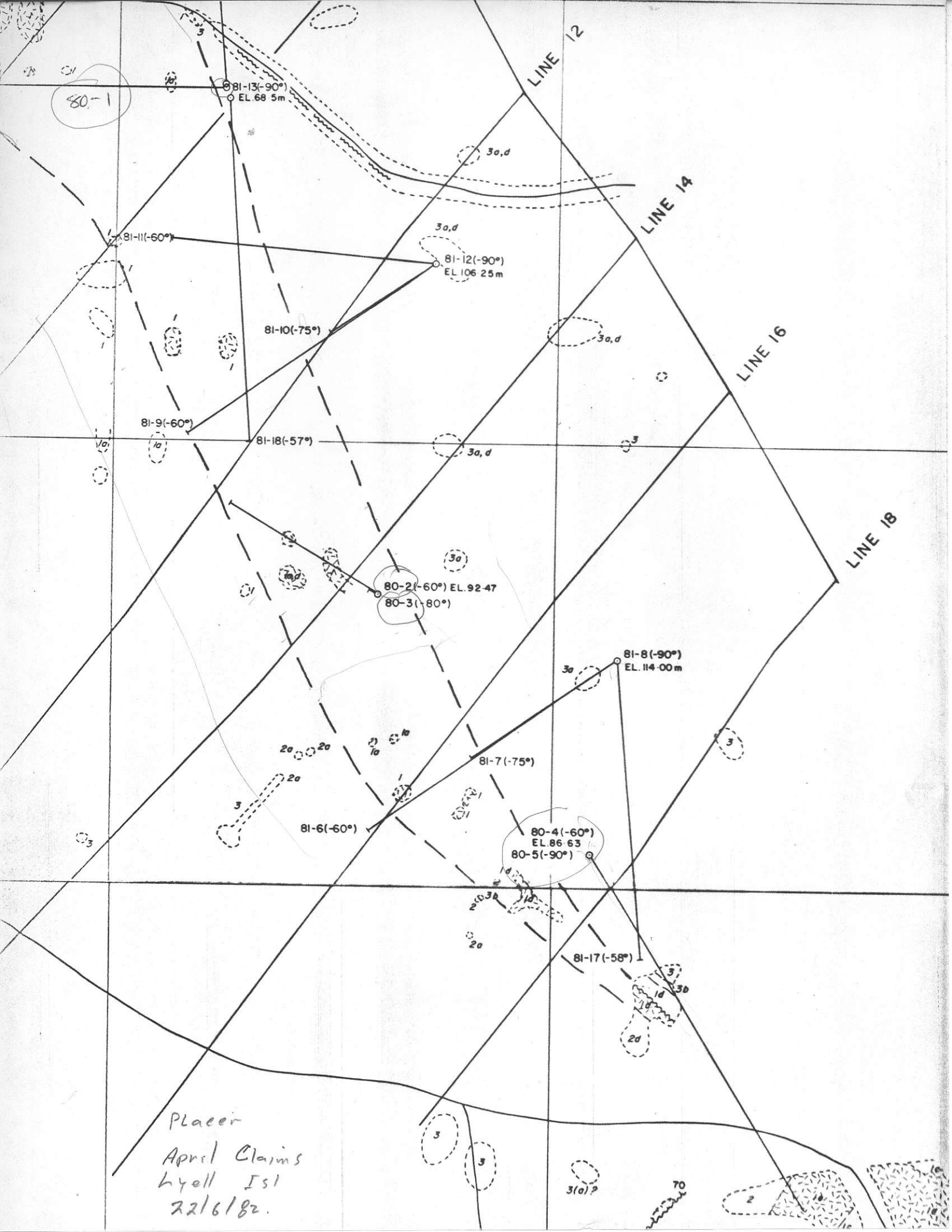
185 Au

600 N

Abund. x x
min float

Portion of fig 7
April claim

550 N



LINE 12

LINE 14

LINE 16

LINE 18

81-13(-90°)
EL. 68.5m

81-12(-90°)
EL. 106.25m

80-2(-60°) EL. 92.47
80-3(-80°)

81-8(-90°)
EL. 114.00m

81-7(-75°)

81-6(-60°)

80-4(-60°)
EL. 86.63
80-5(-90°)

81-17(-58°)

Placer
April Claims
Lyell Isl
22/6/82.

80-1

3a, d

3a, d

3a, d

3a, d

3a

3a

3

2a

2a

1a

3

2a

2d

3

3

3(a)?

70

2

