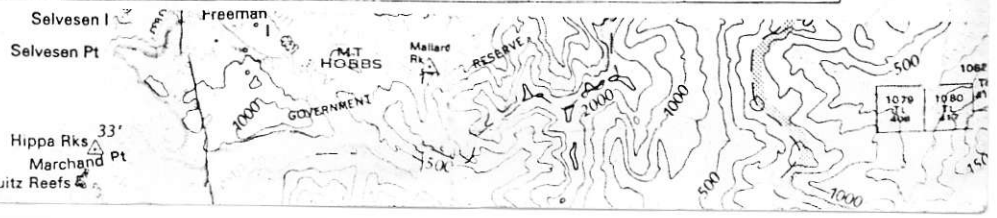
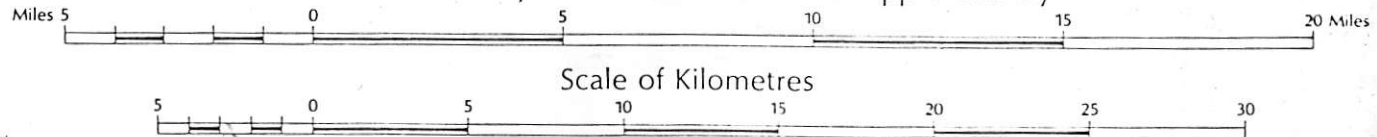


INCONSPICUOUS PROJECT

GRAHAM ISLAND

BRITISH COLUMBIA
QUEEN CHARLOTTE LAND DISTRICT

Scale 1:250,000 or 1 Inch to 4 Miles approximately



J M T SERVICES CORP.

Queen Charlotte Islands NTS 103 F/14 E+15 W

INCONSPICUOUS PROJECT

G E O L O G Y

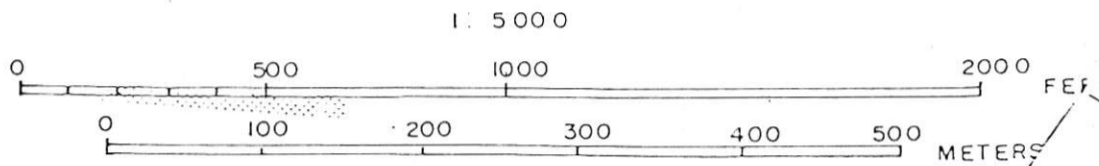
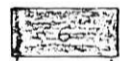
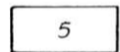


FIG 3

L E G E N D



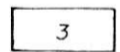
Rhyolite dykes



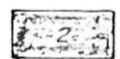
Medium grained diorite



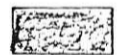
Chunky feldspar porphyry



Hornblende needle andesite - weak feldspar porphyritic texture



Banded rhyolite 2a volcanistic



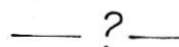
Sandstone and shale: 1H - hornfels
1H? - silicification



Fault



Outcrop



Limit of pyrite includes pyrite-clay ± Silicification Zones



Pyrite-clay ± Silicification zones



Soil sample



Silt sample



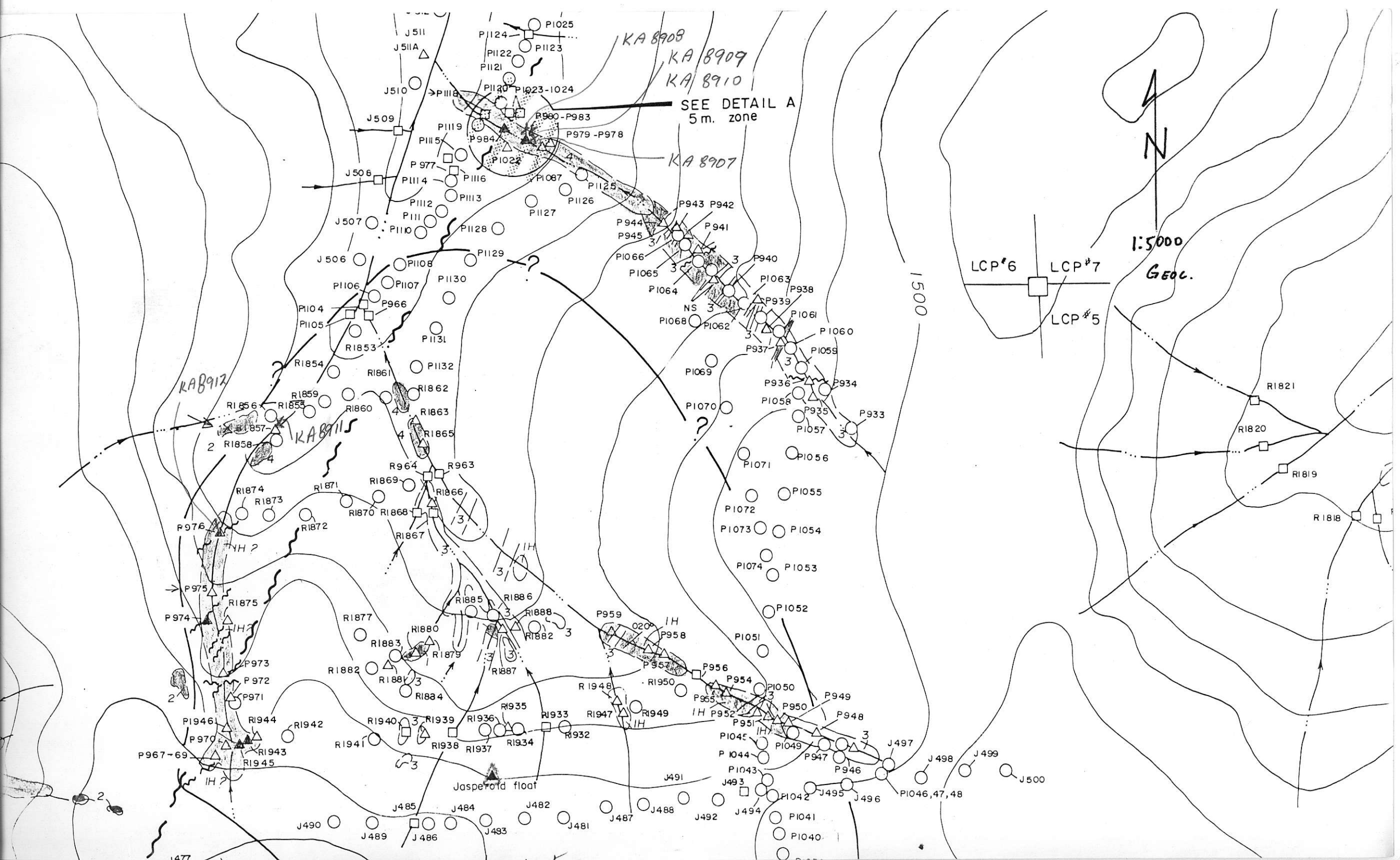
Rock chip



Kerr Addison Rock sample

TERTIARY MASSET FORM

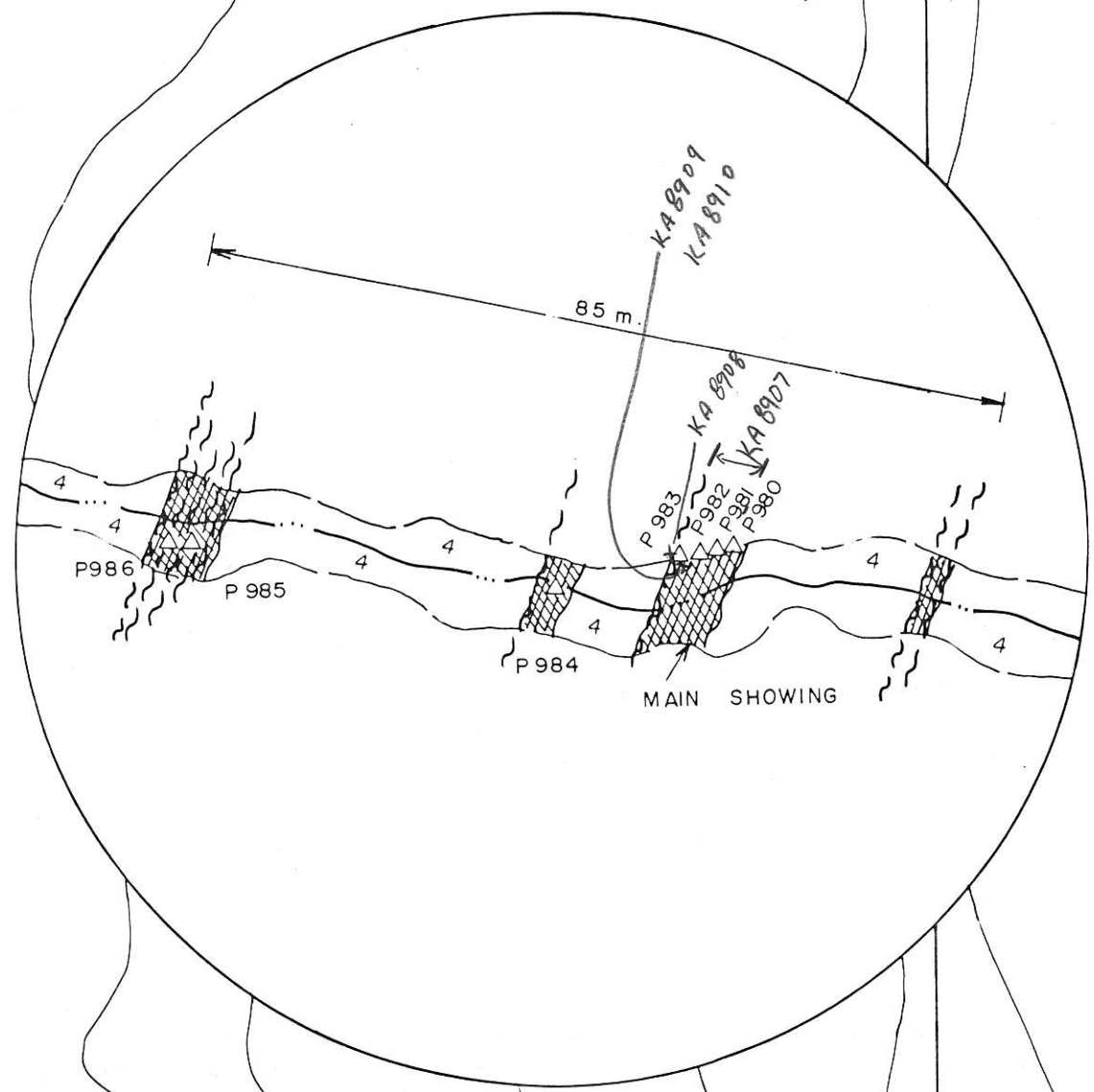
CRETACEOUS HAIDA FORM



DETAIL A



GEOL



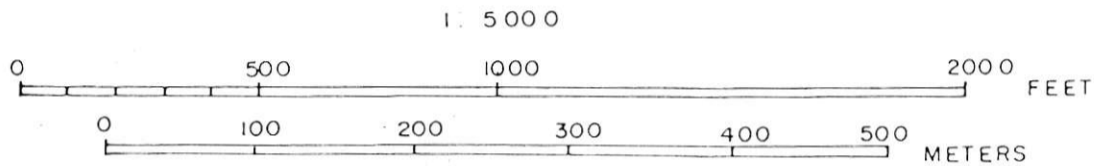
J M T SERVICES CORP.

Queen Charlotte Islands N T S 103 F / 14 E + 15 W

INCONSPICUOUS PROJECT

G O L D G E O C H E M I S T R Y

FIG 4



G O L D G E O C H E M I S T R Y

- > 99 ppb
- 50. - 99 ppb
- 20 - 49 ppb
- 10 - 19 ppb

S O I L G O L D G E O C H E M I S T R Y C O N T O U R S

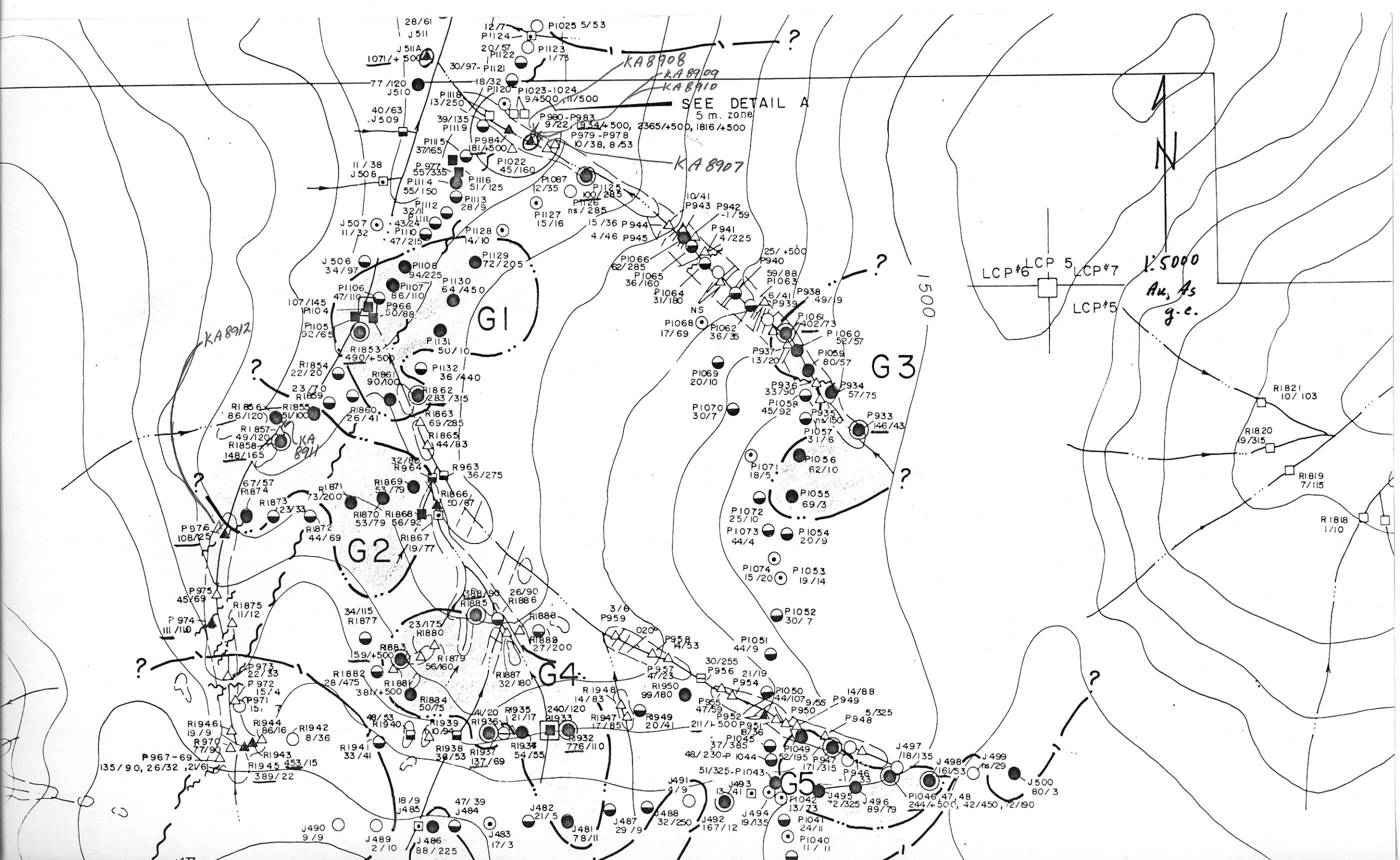
- .. — 50 ppb
- / — 10 ppb

G I to G I O >50 ppb Au soil anomalies discussed in text.

- Soil Sample
- Silt "
- △ Rock "

○
R 2131 Gold (Au) / Arsenic (As)
4/30 ppb. ppm.

X
KA 8907 Kerr Addison Rock sample.



SEE DETAIL A

1:5000
Au, As
g.c.

KA 8908
KA 8909
KA 8910

KA 8907

KA 8912

KA 8911

G1

G2

G3

G4

G5

LCP#6 LCP#5 LCP#7
LCP#5

1500

28/61
J511
J511A
1071/+500
30/97- P1121
18/32
P1124
20/57
P1122
P1123
1/75
P1120
P1023-1024
94500, 11/500

40/63
J509
P1118
13/250
39/135
P1119
P1115
37/165
P984
81/4500
P977
55/335
P1114
55/150
P1112
32/11
P1113
28/9
P1108
94/225
P1130
64/450
P1106
47/110
P1104
107/145
P1105
92/65
R1853
490/+500
R1854
22/20
R1859
23/70
R1856
86/120
R1855
51/100
R1857
49/120
R1858
148/165
R1860
26/41
R1862
283/315
R1863
69/285
R1865
44/83
R1869
53/79
R1871
73/200
R1873
23/33
R1874
67/57
R1877
44/69
R1879
56/60
R1880
23/175
R1882
28/475
R1883
59/+500
R1884
50/75
R1887
32/180
R1888
27/200
R1889
388/90
26/90
R1885
R1886
R1888
R1889

11/38
J506
J507
11/32
43/24
P1110
47/215
P1128
14/10
P1129
72/205
P1107
86/110
P966
50/88
R1854
22/20
R1859
23/70
R1856
86/120
R1855
51/100
R1857
49/120
R1858
148/165
R1860
26/41
R1862
283/315
R1863
69/285
R1865
44/83
R1869
53/79
R1871
73/200
R1873
23/33
R1874
67/57
R1877
44/69
R1879
56/60
R1880
23/175
R1882
28/475
R1883
59/+500
R1884
50/75
R1887
32/180
R1888
27/200
R1889
388/90
26/90
R1885
R1886
R1888
R1889

P976
108/25
P975
45/69
P974
111/110
P973
22/33
P972
15/74
P971
15
R1946
19/9
R970
77/90
R1943
1945 453/15
389/22
R1940
33/41
R1939
0/94
R1938
39/53
R1937
137/69
R1948
14/83
R1947
17/85
R1949
20/41
R1950
99/180
R1951
47/59
R1952
21/19
R1953
14/88
R1954
44/107
R1955
5/325
R1956
21/19
R1957
47/23
R1958
14/53
R1959
30/255
R1960
21/19
R1961
14/88
R1962
5/325
R1963
P948
R1964
14/36
R1965
8/36
R1966
17/315
R1967
-1/33
R1968
161/53
R1969
ns/29
R1970
17/315
R1971
-1/33
R1972
161/53
R1973
89/79
R1974
244/+500, 42/450, 72/190
R1975
17/315
R1976
-1/33
R1977
161/53
R1978
89/79
R1979
244/+500, 42/450, 72/190
R1980
17/315
R1981
-1/33
R1982
161/53
R1983
89/79
R1984
244/+500, 42/450, 72/190
R1985
17/315
R1986
-1/33
R1987
161/53
R1988
89/79
R1989
244/+500, 42/450, 72/190
R1990
17/315
R1991
-1/33
R1992
161/53
R1993
89/79
R1994
244/+500, 42/450, 72/190
R1995
17/315
R1996
-1/33
R1997
161/53
R1998
89/79
R1999
244/+500, 42/450, 72/190

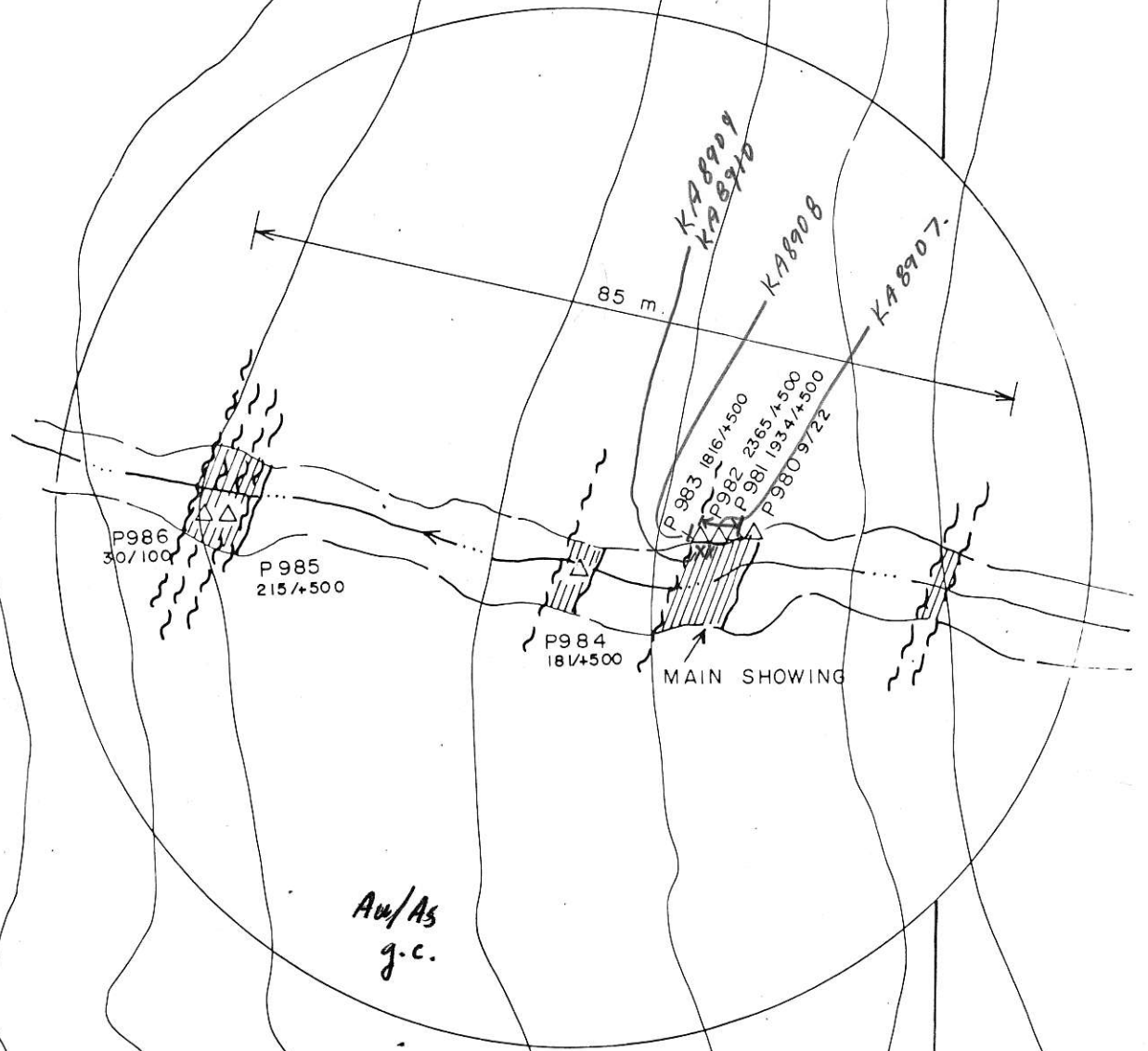
P967-69
135/90, 26/32, 2/61
R1943
1945 453/15
389/22
R1940
33/41
R1939
0/94
R1938
39/53
R1937
137/69
R1948
14/83
R1947
17/85
R1949
20/41
R1950
99/180
R1951
47/59
R1952
21/19
R1953
14/88
R1954
44/107
R1955
5/325
R1956
21/19
R1957
47/23
R1958
14/53
R1959
30/255
R1960
21/19
R1961
14/88
R1962
5/325
R1963
P948
R1964
14/36
R1965
8/36
R1966
17/315
R1967
-1/33
R1968
161/53
R1969
ns/29
R1970
17/315
R1971
-1/33
R1972
161/53
R1973
89/79
R1974
244/+500, 42/450, 72/190
R1975
17/315
R1976
-1/33
R1977
161/53
R1978
89/79
R1979
244/+500, 42/450, 72/190
R1980
17/315
R1981
-1/33
R1982
161/53
R1983
89/79
R1984
244/+500, 42/450, 72/190
R1985
17/315
R1986
-1/33
R1987
161/53
R1988
89/79
R1989
244/+500, 42/450, 72/190
R1990
17/315
R1991
-1/33
R1992
161/53
R1993
89/79
R1994
244/+500, 42/450, 72/190
R1995
17/315
R1996
-1/33
R1997
161/53
R1998
89/79
R1999
244/+500, 42/450, 72/190

J490
9/9
J489
2/10
J488
88/225
J487
17/3
J486
78/11
J485
47/39
J484
21/5
J483
17/3
J482
21/5
J481
78/11
J480
29/9
J479
32/250
J478
167/12
J477
19/135
J476
161/53
J475
ns/29
J474
17/315
J473
-1/33
J472
161/53
J471
89/79
J470
244/+500, 42/450, 72/190
J469
17/315
J468
-1/33
J467
161/53
J466
89/79
J465
244/+500, 42/450, 72/190
J464
17/315
J463
-1/33
J462
161/53
J461
89/79
J460
244/+500, 42/450, 72/190
J459
17/315
J458
-1/33
J457
161/53
J456
89/79
J455
244/+500, 42/450, 72/190
J454
17/315
J453
-1/33
J452
161/53
J451
89/79
J450
244/+500, 42/450, 72/190

DETAIL A



*Au, As
geochem.*



*Au/As
g.c.*

100