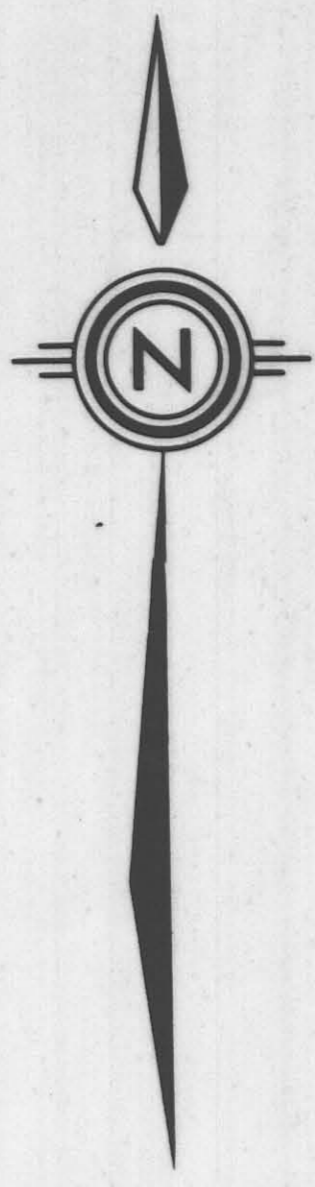


HVI  
522.0



8,848,000N

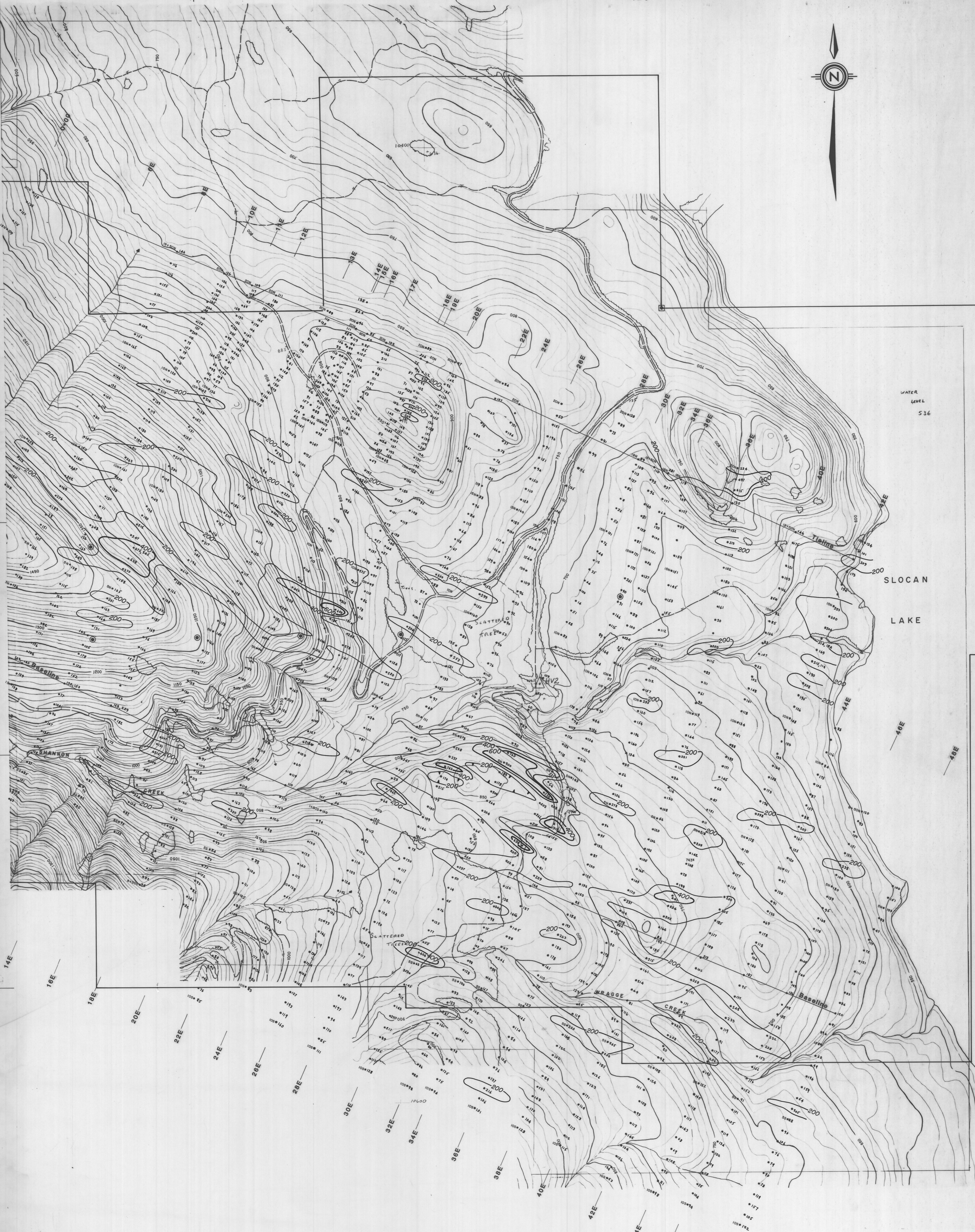
8,848,000N

8,847,000N

8,848,000N

8,848,000N

8,844,000N

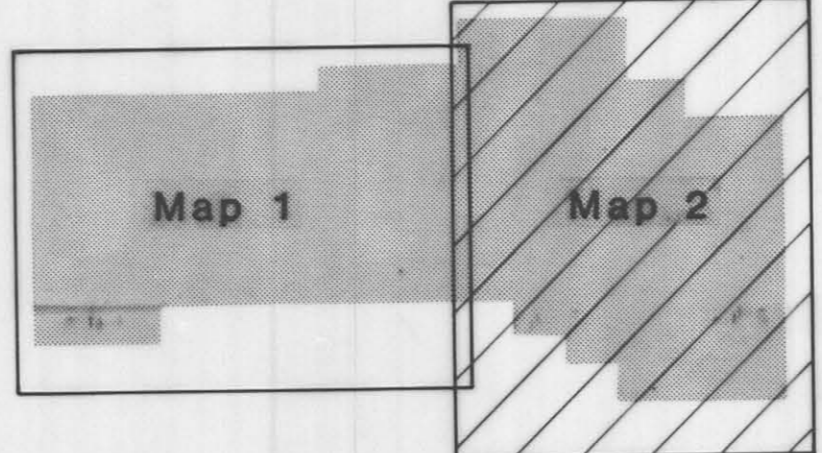


WATER LEVEL  
536

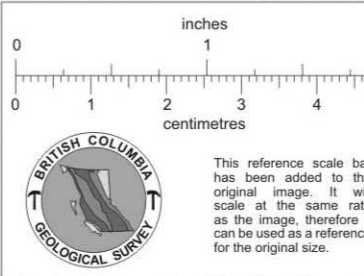
SLOCAN  
LAKE

- CLAIM POST - LOCATED
- CLAIM POST - UNLOCATED
- 200
- 400
- 600

KEY



CYPRUS ANVIL MINING CORPORATION  
 SHANNON CREEK MOLY PROJECT  
 SLOCAN MINING DIVISION - B.C.  
 Zn GEOCHEMISTRY



1:6,000

R.T.S. 824/5.4  
SURVEY BY:  
DRAWN BY: VI

DATE: 813062

Shannon Creek  
Moly  
02/01/82  
1:6000