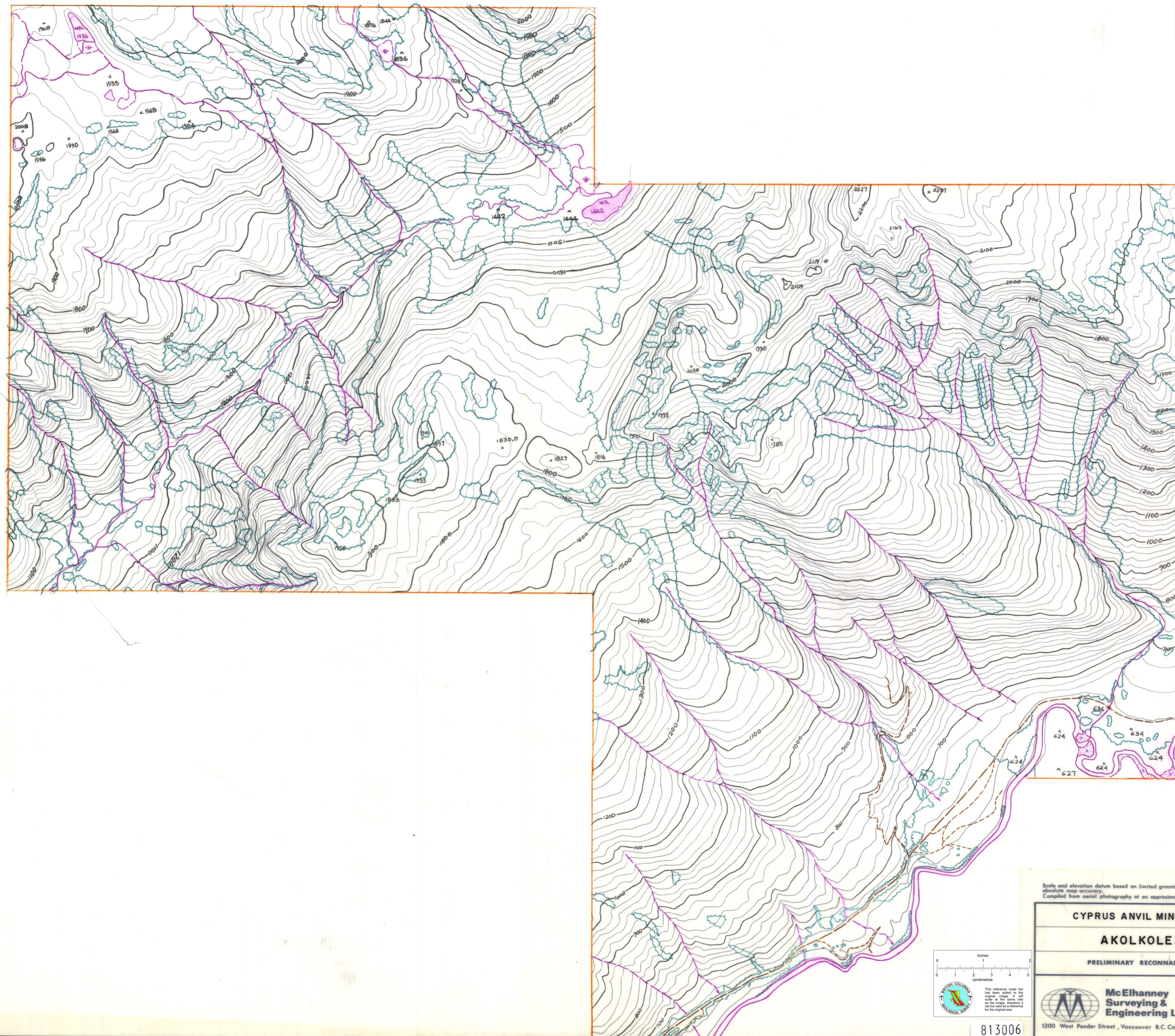


82-K-13
WIGWAM
PROPERTY
TOP
SITING
PROJECT
1" = 10,000'



89° 55' 35"

117° 59' 40"

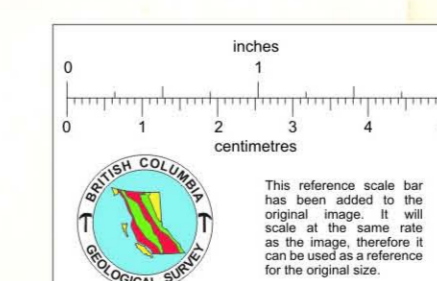


Scale and elevation datum based on limited ground control resulting in good relative, but uncertain absolute map accuracy.
Compiled from aerial photography at an approximate scale of 1 inch equals 5280 feet flown in 1970.

CYPRUS ANVIL MINING CORPORATION
AKOLKOLEX RIVER
PRELIMINARY RECONNAISSANCE TYPE MAPPING

Scale	1:10,000
Contour Interval	20 METERS
Date	MARCH 1977
Job No.	06351-0
Sheet No.	1 OF 1

McElhanney Surveying & Engineering Ltd.
1200 West Pender Street, Vancouver, B.C. Canada



813006