

CANADA
DEPARTMENT OF
MINES AND TECHNICAL SURVEYS
SURVEYS AND MAPPING BRANCH
(Joins Williams Lake-Prince George 93 S.E.)

MERRITT-LAC LA HACHE N.W. 50/124
ELEVATIONS IN FEET

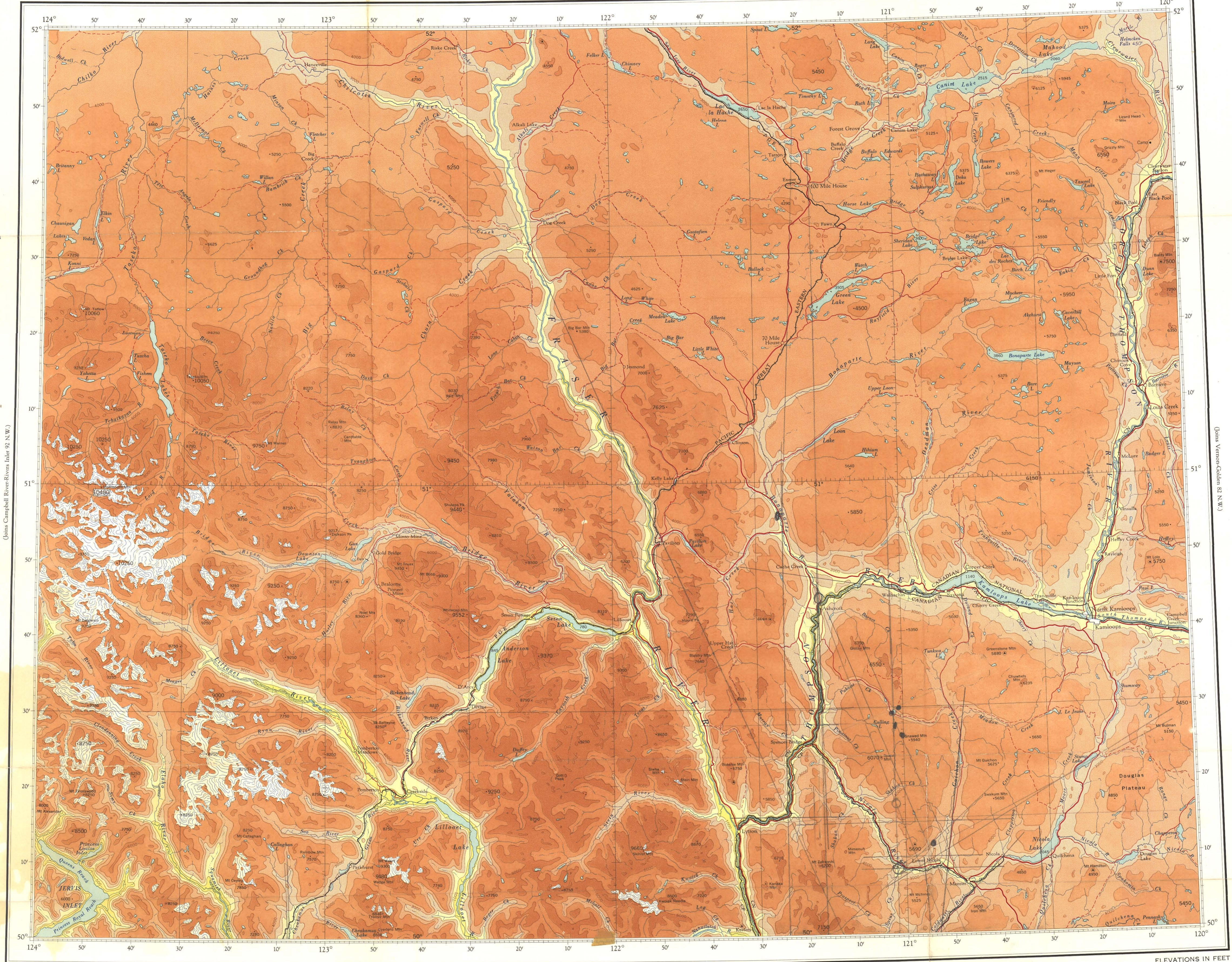
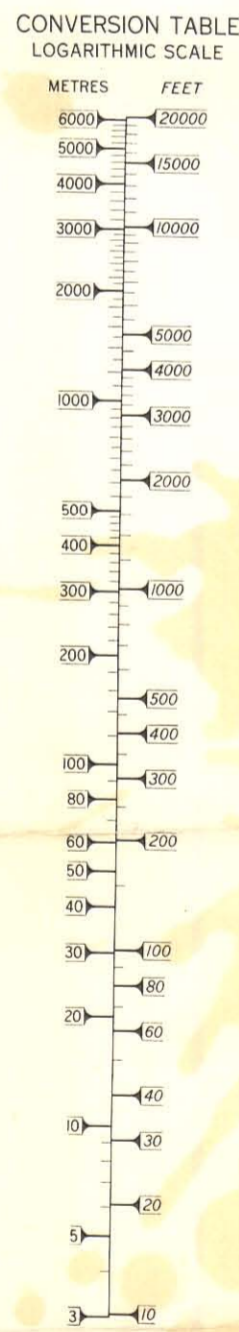
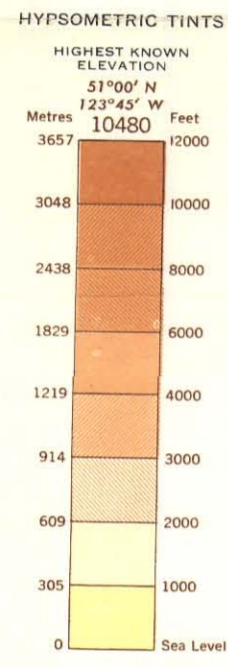
ELEVATIONS IN FEET

ELEVATIONS IN FEET

THIRD EDITION

Transverse Mercator Projection

ELEVATIONS IN FEET



ELEVATIONS IN FEET
Base Map, 3rd Edition 1960

Produced by the Survey and Mapping Branch,
Department of Mines and Technical Surveys.

ELEVATIONS IN FEET

(Joins Victoria-Vancouver 92 S.E.)

ELEVATIONS IN FEET

Copies may be obtained from the Map Distribution Office, Department
of Mines and Technical Surveys, Ottawa, Canada.

MERRITT-LAC LA HACHE N.W. 50/124
N.T.S. No. 92 NE

CYPRUS MINES CORPORATION

812970

MAR 13 1968

SCALE 1:500,000

