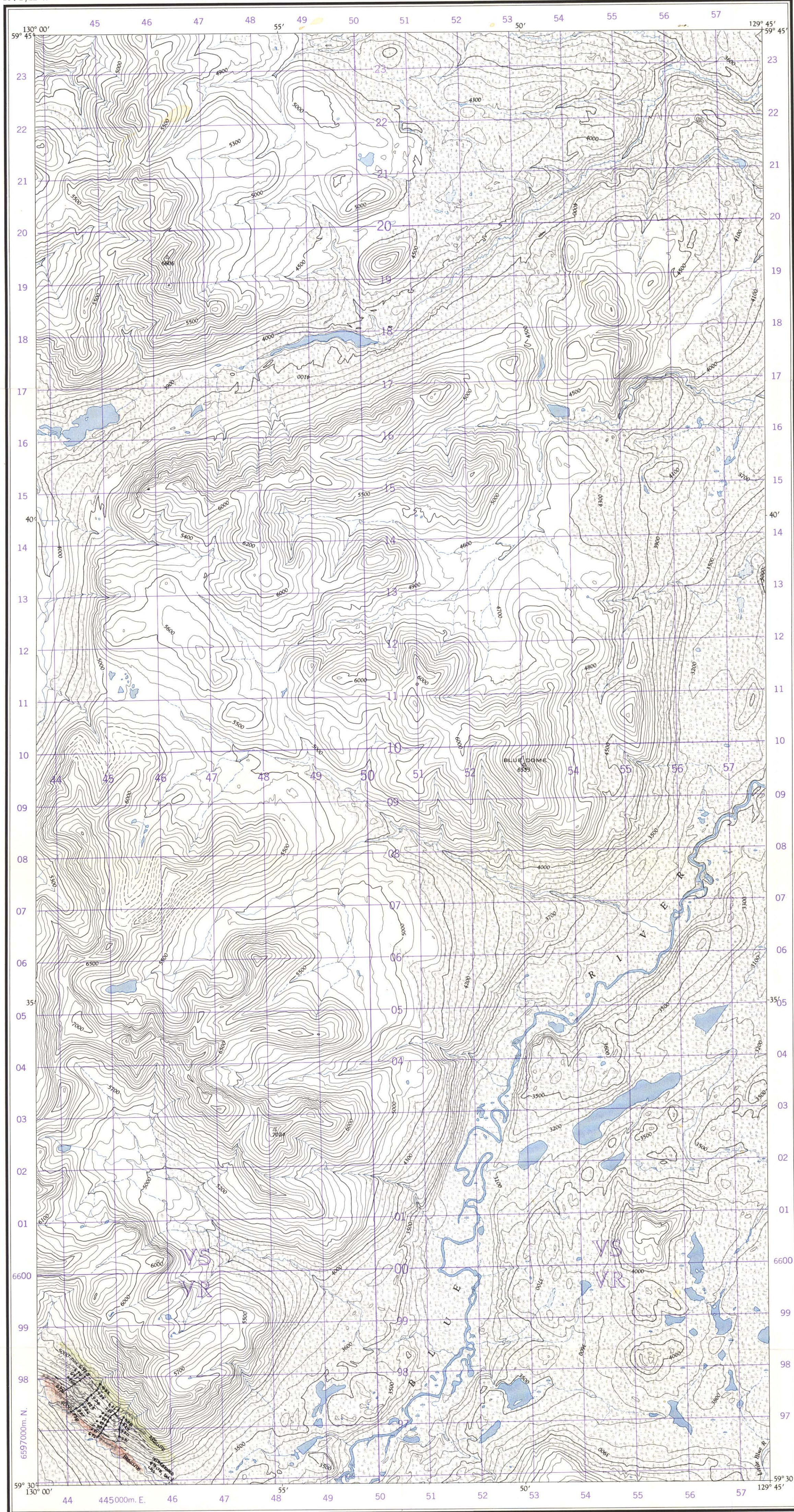


Refer to this map as: 104 P/12 WEST EDITION 1 ASE SERIES A 721



BASE

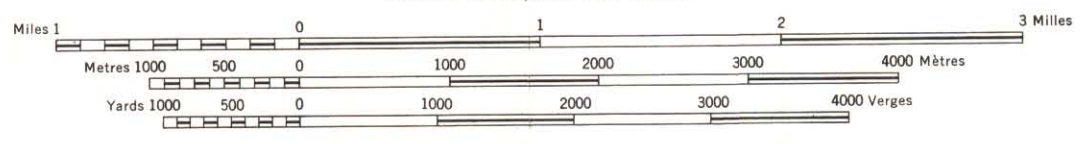
BASE

ORIGINAL

Produced and printed by the SURVEYS AND MAPPING BRANCH, DEPARTMENT OF MINES AND TECHNICAL SURVEYS, 1961, from air photographs taken in 1948.

ORIGINAL  
BLUE DOME  
BRITISH COLUMBIA  
CASSIAR DISTRICT

SCALE 1:50,000 ÉCHELLE



CONTOUR INTERVAL 100 FEET  
Elevations in Feet above Mean Sea Level  
North American Datum 1927  
Transverse Mercator Projection

ÉQUIDISTANCE DES COURBES: 100 PIEDS  
Élévations en pieds au-dessus du niveau moyen de la mer  
Réseau géodésique nord-américain unifié (1927)  
Projection transverse de Mercator

MAGNETIC DECLINATION 32° 00' EAST  
AT CENTRE OF MAP 1961  
Annual change (decreasing) 3.5'

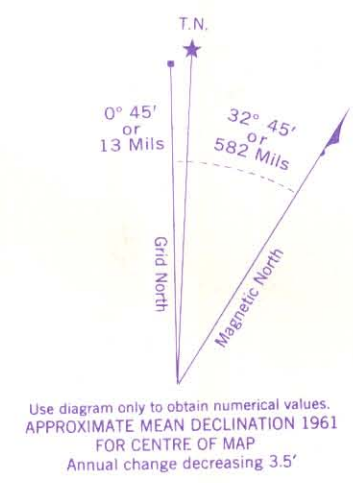
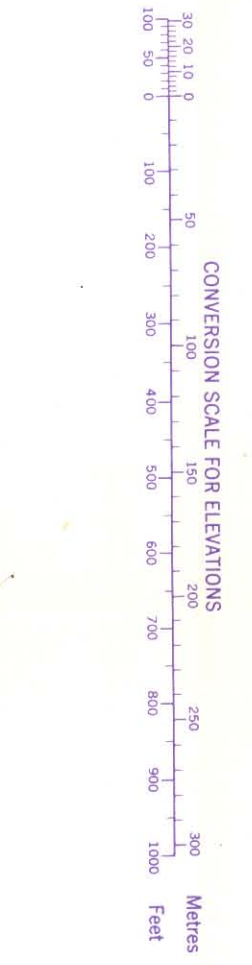
DÉCLINAISON MAGNÉTIQUE AU CENTRE  
DE LA FEUILLE EN 1961: 32° 00' EST  
Variation annuelle (décroissante) 3.5'

The nomenclature on this map has not been submitted to the Canadian Board on Geographical Names and may be subject to revision. Information on names is invited by the Surveys and Mapping Branch.

La nomenclature de la présente carte n'a pas été soumise à la Commission canadienne des noms géographiques et par conséquent, elle pourrait faire l'objet d'une révision. Tous renseignements sur les noms seront bien accueillis par la Direction des levés et de la cartographie.

Établi et imprimé par la DIRECTION DES LEVÉS ET DE LA CARTOGRAPHIE, MINISTÈRE DES MINES ET DES RELEVÉS TECHNIQUES en 1961, d'après les photographies aériennes prises en 1948.

- |                             |       |                                   |       |                           |       |                           |       |
|-----------------------------|-------|-----------------------------------|-------|---------------------------|-------|---------------------------|-------|
| Building                    | ..... | Bâtiment                          | ..... | Ben                       | ..... | Grange                    | ..... |
| School                      | ..... | École                             | ..... | Post Office               | ..... | Bureau de poste           | ..... |
| Church                      | ..... | Église                            | ..... | Cemetery                  | ..... | Cimetière                 | ..... |
| Lighthouse                  | ..... | Phare                             | ..... | Revue with bridge         | ..... | Revue avec pont           | ..... |
| Stream, intermittent or dry | ..... | Cours d'eau intermittent ou à sec | ..... | Lake, intermittent or dry | ..... | Lac intermittent ou à sec | ..... |
| Marsh or Swamp              | ..... | Marais ou marécage                | ..... | Depression contours       | ..... | Courbes de cuestas        | ..... |

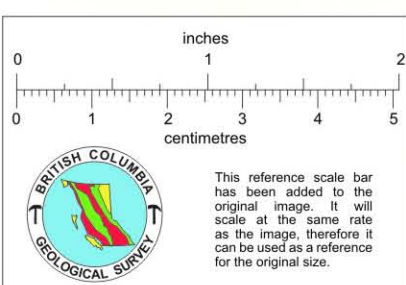


Use diagram only to obtain numerical values.  
APPROXIMATE MEAN DECLINATION 1961  
FOR CENTRE OF MAP  
Annual change decreasing 3.5'

GRID ZONE DESIGNATION	100,000 M. SQUARE IDENTIFICATION
9V	VS 66

TO GIVE A REFERENCE TO NEAREST 100 METRES  
EXAMPLE: STREAM JUNCTION  
EASTING: Read number on grid line immediately to left of point. Estimate tenths of a square from this line eastward to point. 50  
NORTHING: Read number on grid line immediately below point. Estimate tenths of a square from this line southward to point. 10  
MILITARY GRID REFERENCE 502102  
Nearest similar grid reference 100,000 metres (about 62 miles)

ONE THOUSAND METRE  
UNIVERSAL TRANSVERSE MERCATOR GRID  
ZONE 9



This reference scale bar has been added to the original map. It will scale at the same ratio as the original map and can be used as a reference for the original size.

NATIONAL TOPOGRAPHIC SYSTEM  
SYSTÈME DE RÉFÉRENCE CARTOGRAPHIQUE NATIONAL

812915  
Cassiar

104 P/12 W  
EDITION 1