

ROMULUS EXPLORATION COMPANY

CASSIAR PROJECT

GEOLOGY AND SAMPLE LOCATIONS

104 P/~~1~~ 6W

SCALE: 1 : 25,000

SEPTEMBER 1972

812809

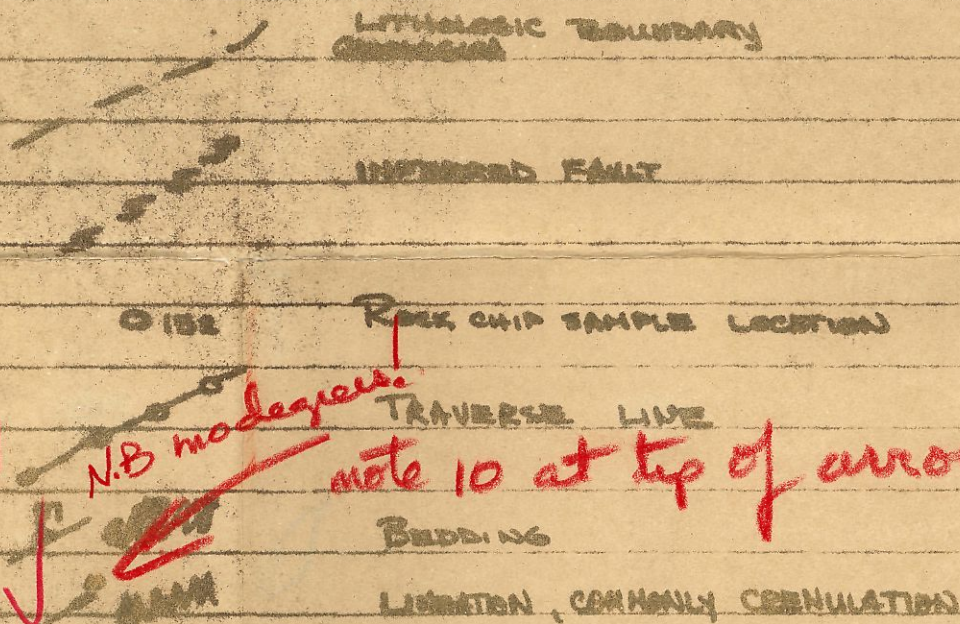
Cassiar

LEGEND

LITHOLOGIES

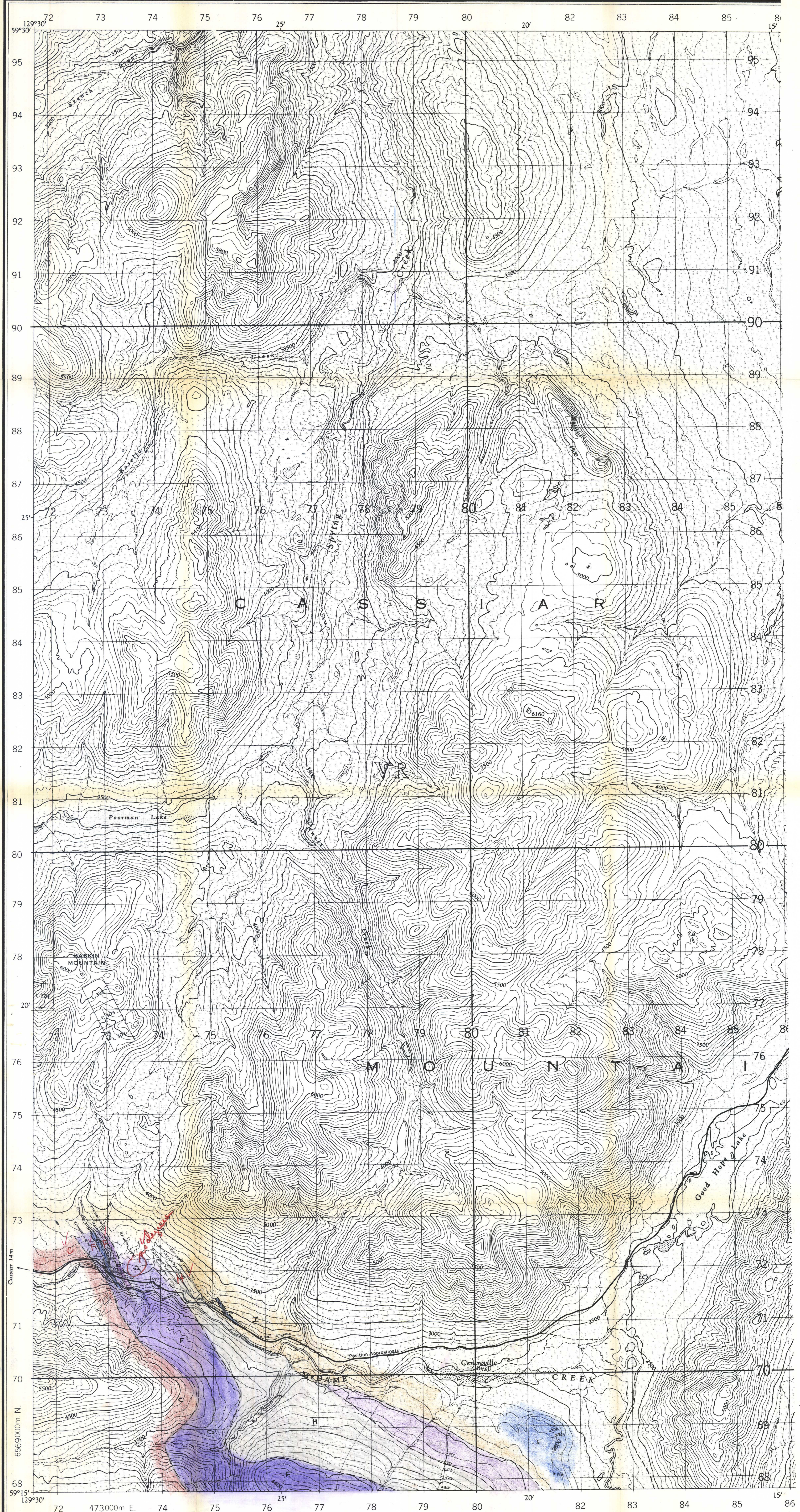
(N.B. NOT NECESSARILY IN STRATIGRAPHIC ORDER)

- A** GRANITIC ROCKS, COMMONLY COARSE GRAINED - PORPHYRITIC
QUARTZ MONZONITE
- B** METAMORPHOSED VOLCANICS, ^{GREYWACKES} AT ^{OFTEN} GREY-GREEN, ~~AND~~ ^{AND} ~~ADHANT~~
ALSO INCLUDES MINOR THINLY BEDDED CHERT
- C** BLACK SILICEOUS ARGILLITE, PHYLLITIC ARGILLITE, COMMONLY
LIMONITE STAINED AND MODERATELY LAMINATED
- D** FETID LIMESTONE, FETID DOLOMITE,
COMMONLY GREY BLACK WEATHERING MEDIUM GREY
- E** LIMESTONE, MINOR DOLOMITE, OFTEN MASSIVE BUT
LOCALLY LAMINATED, ^{Period} MEDIUM GREY - BLACK, COMMONLY WEATHERING
LIGHT - MEDIUM GREY.
- F** DOLOMITE, MINOR LIMESTONE, COMMONLY DARK GREY,
WEATHERING MEDIUM GREY
- G** INTERBEDDED QUARTZITE, LIMESTONE AND DOLOMITE
- H** QUARTZITE, OFTEN DOLOMITIC NEAR TOP
- I** CALCAREOUS ARGILLITE - SLATE, COMMONLY BLACK



N.B. moderate!

note 10 at tip of arrows!

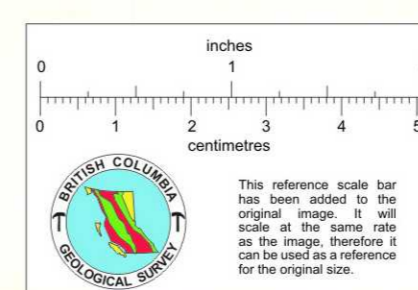


Produced and printed by the SURVEYS AND MAPPING
 BRANCH, DEPARTMENT OF MINES AND TECHNICAL
 SURVEYS, 1959, from air photographs taken in 1948 and 1949.

The nomenclature on this map has not been submitted to the Canadian
 Board on Geographical Names and may be subject to revision.

ROADS:
 all weather

REFERENCE



GOOD HOPE
 CASSIAR DISTRICT
 BRITISH COLUMBIA