

LEGEND

LITHOLOGIES

(N.B. NOT NECESSARILY IN STRATIGRAPHIC ORDER)



GRANITIC ROCKS, COMMONLY COARSE GRAINED - PORPHYRITIC
QUARTZ MONZONITE



METAMORPHOSED VOLCANICS, ^{GREY/BLACK} *note* OFTEN GREY-GREEN, ~~AND ADVANCED~~
ALSO INCLUDES MINOR THINLY BEDDED CHERT



BLACK SILICEOUS ARGILLITE, PHYLLITIC ARGILLITE, COMMONLY
LIMONITE STAINED AND MODERATELY LINEATED



FETID LIMESTONE, FETID DOLOMITE,
COMMONLY GREY BLACK, WEATHERING MEDIUM GREY



LIMESTONE, MINOR DOLOMITE, OFTEN MASSIVE BUT
LOCALLY LAMINATED, MEDIUM GREY - BLACK, COMMONLY WEATHERS
LIGHT-MEDIUM GREY



DOLOMITE, MINOR LIMESTONE, COMMONLY DARK GREY,
WEATHERING MEDIUM GREY



INTERBEDDED QUARTZITE, LIMESTONE AND DOLOMITE



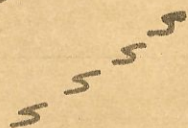
QUARTZITE, OFTEN DOLOMITIC NEAR TOP



CALCAREOUS ARGILLITE - SLATE, COMMONLY BLACK



LITHOLOGIC BOUNDARY
~~GEOLOGICAL~~



INFERRED FAULT

0132

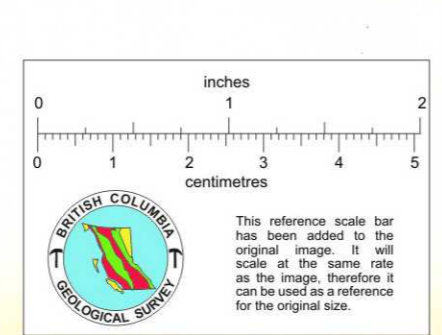
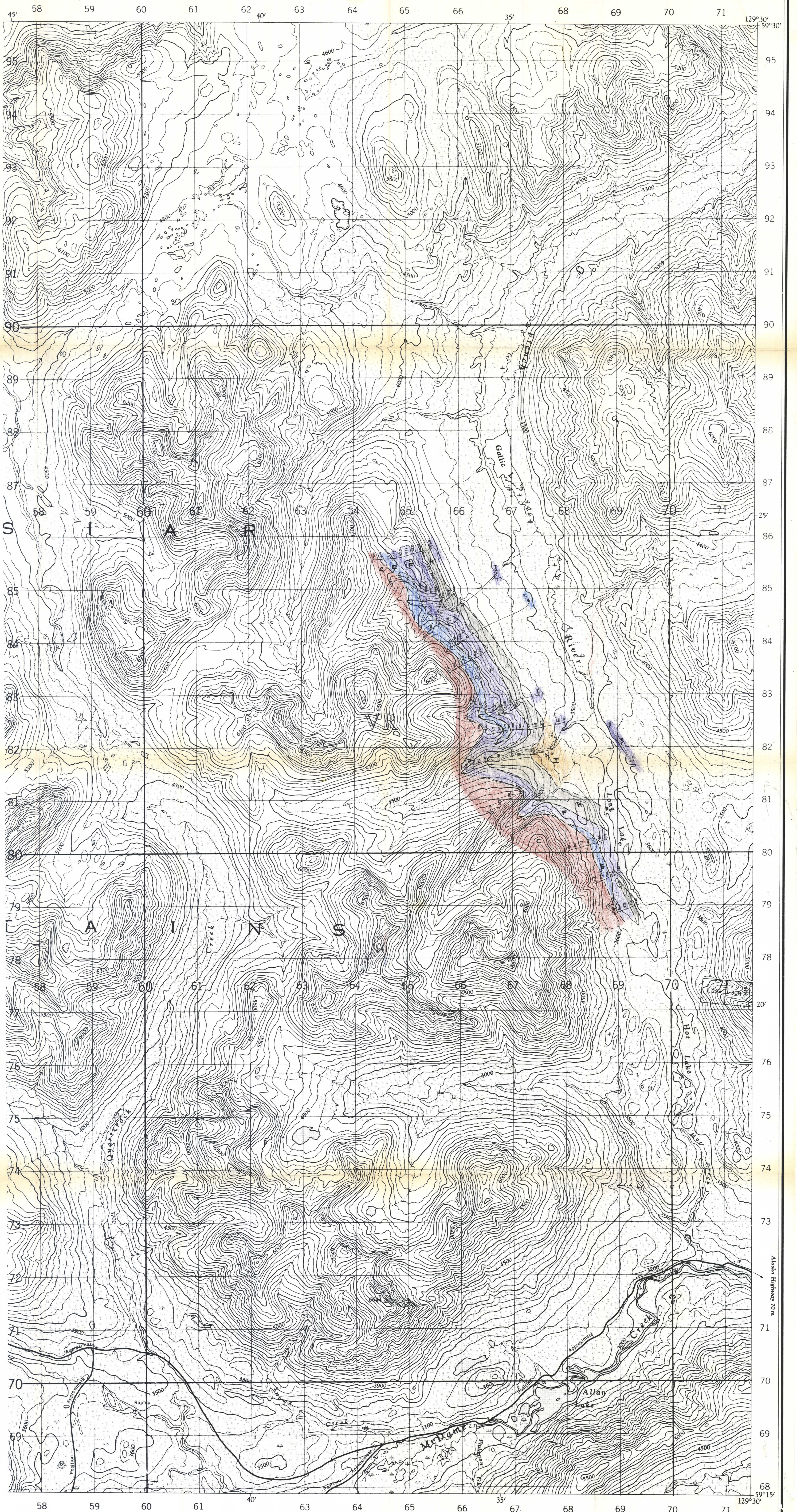
ROCK CHIP SAMPLE LOCATION

note
51
100 ft
note
10

TRAVERSE LINE

BEDDING

LINEATION, COMMONLY CRENUULATION



104 P/5 EV
REFERENCE