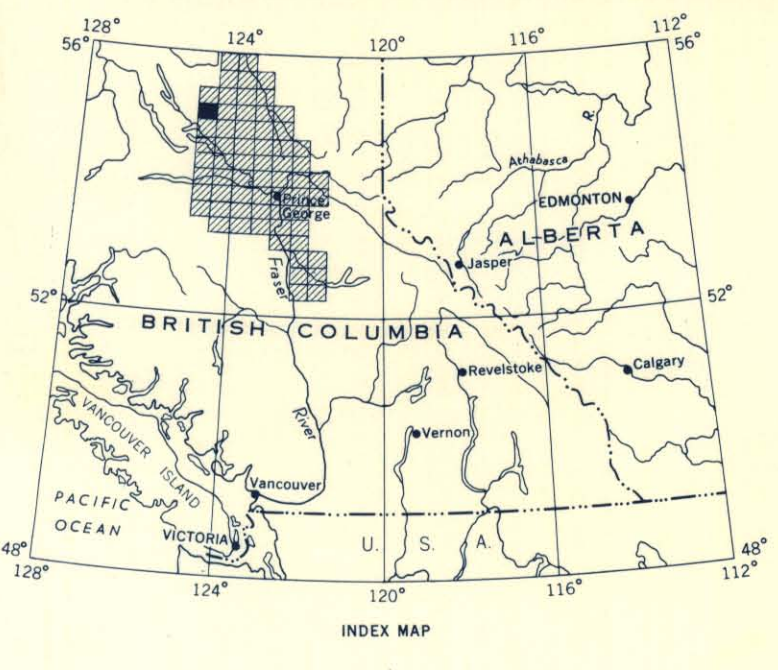
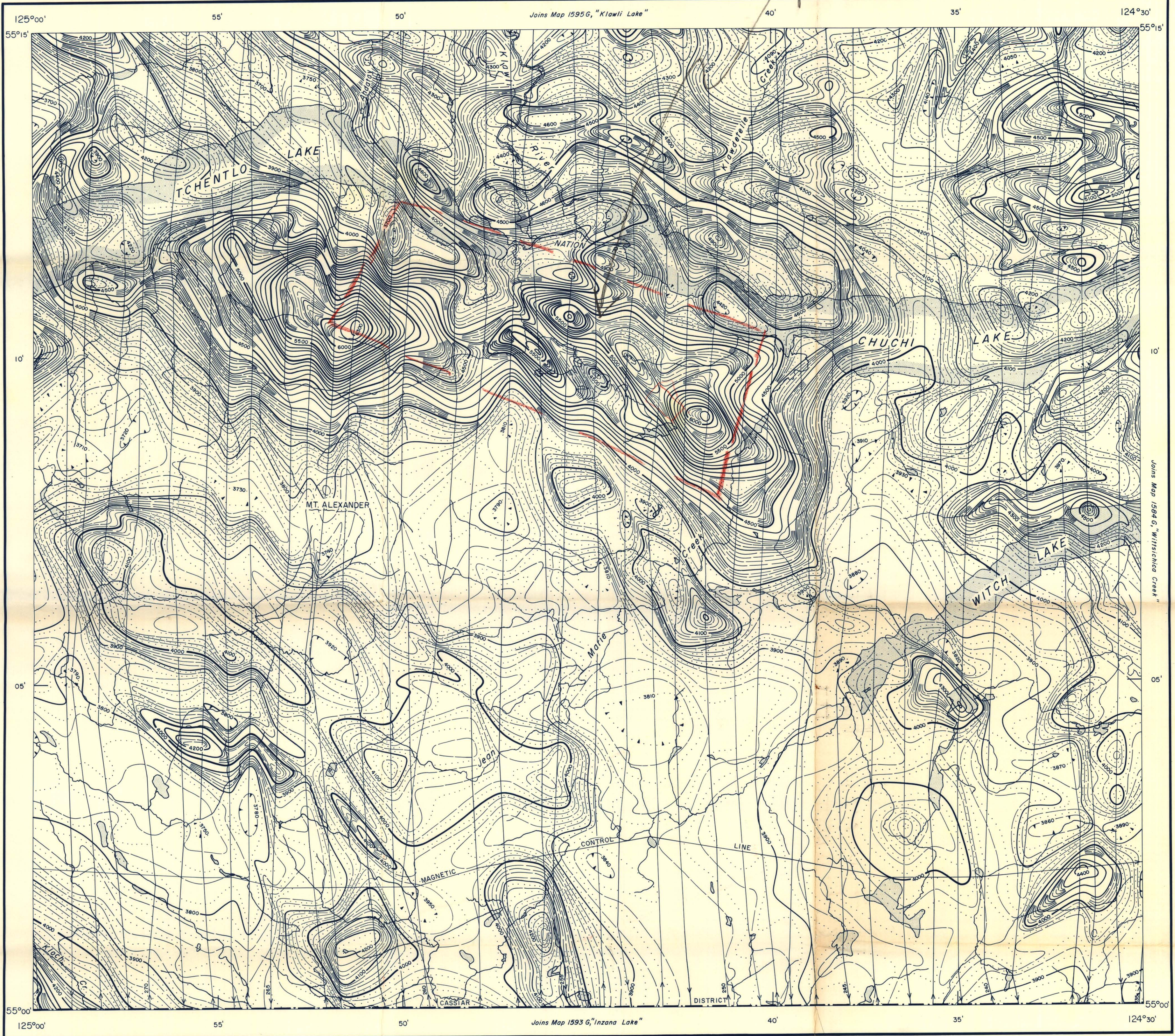


General area of West Coast Nations Co Property



ISOMAGNETIC LINES (total field)

500 gammas

100 gammas

20 gammas

10 gammas

Magnetic depression

Flight lines

Nominal terrain clearance 1000 feet

MAP 1594G

CHUCHI LAKE
BRITISH COLUMBIA

Magnetic survey, June to September, 1961 by
Geophysics Division, Geological Survey of Canada;
Department of Mines and Technical Surveys.

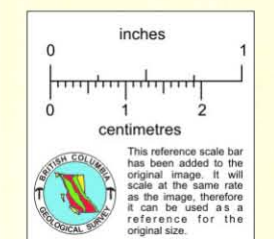
No correction has been made for regional variation.

The planimetry was obtained from topographical
sheets published by the Department of Mines and
Technical Surveys and the British Columbia Surveys
and Mapping Branch, Department of Lands and Forests.

Scale: One Inch to One Mile = $\frac{1}{63,360}$ Miles

1 1/2 0 1 2 3

No correction has been made for Topographical relief.



The magnetic data on this map were compiled from information recorded along the flight lines shown. The anomalies expressed by the magnetic contours are dependent on the variable magnetic intensities of the underlying rocks, and may be due to conditions near, or at unknown depths below the surface. High magnetic anomalies normally indicate the presence of basic rocks, such as diabase, gabbro, or serpentinite, which have a relatively high iron content; but in special instances may be due, or partly due, to concentrations of magnetic ore minerals. By means of the magnetic anomalies, various rocks bodies or structural features, such as faults or folds, may be traced by the geologist into, or across, areas of few or no outcrops. In many instances, however, no interpretation of particular anomalies may be possible without further geological information.

GEOPHYSICS PAPER 1594
CHUCHI LAKE
BRITISH COLUMBIA
SHEET 93 ^N/₂

*93N
Nation Copper*

812780