

CLAIMS HEATH A1-11 NS #1, 11-13, 3C-37

NAG 400' LINE SPACING
100' READINGS

IP 800' SPACING + POSSIBLE FILLING IN.

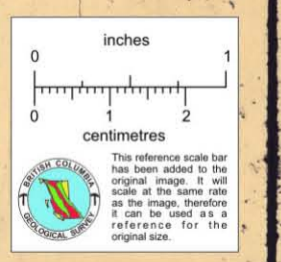
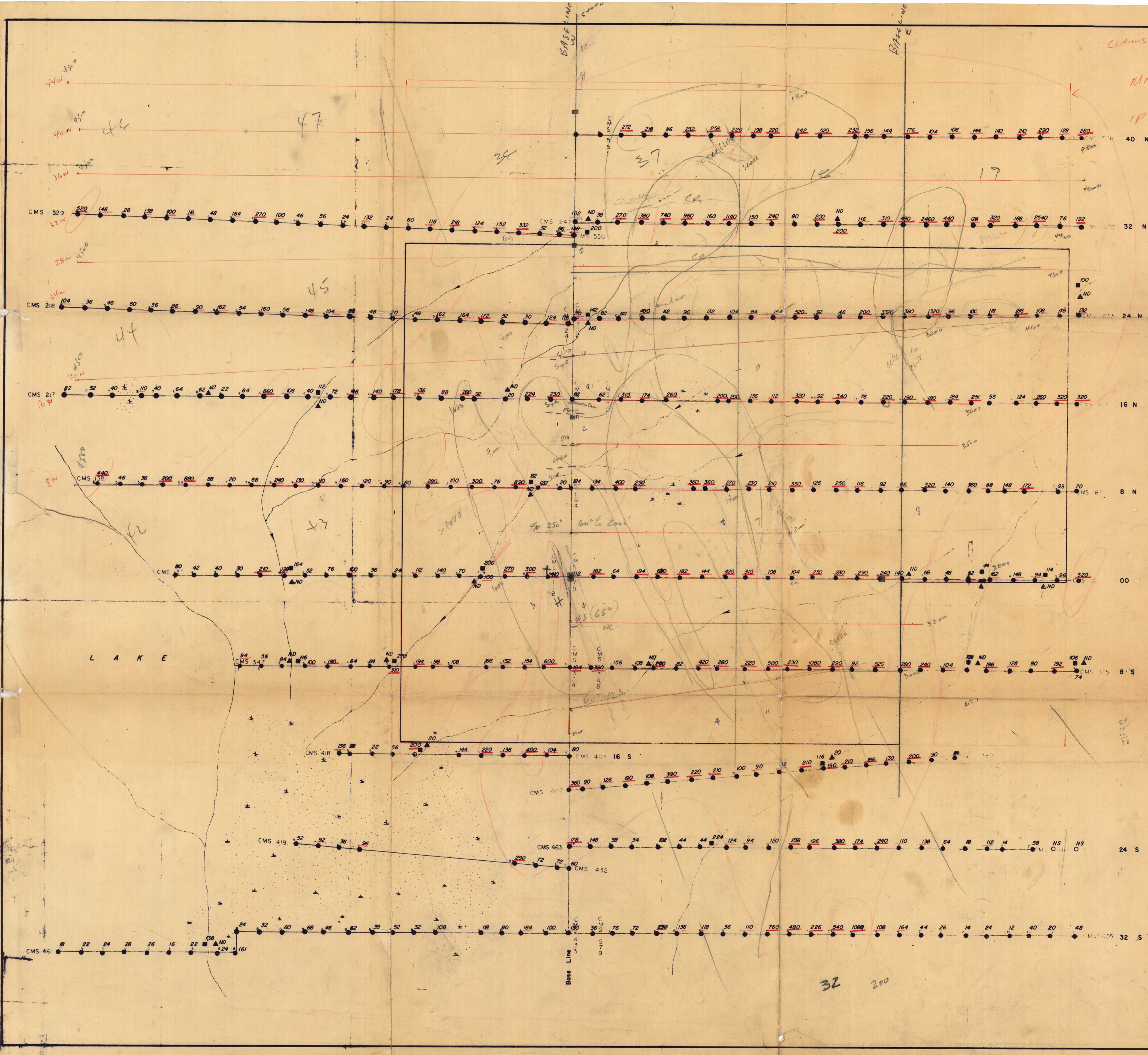


GEOCHEMICAL LEGEND

- SOIL SAMPLE (ppm Cu)**
- < 60 Background
 - 60 - 150 Positive
 - 151 - 300 Anomalous
 - > 300 Highly Anomalous
- SILT SAMPLE (ppm Cu)**
- < 60 Background
 - > 60 Anomalous
- WATER SAMPLE (ppb Cu)**
- ▲ N.D. to 20 (N.D. = Not Detectable)

SYMBOLS

- Soil Sample Site
- Silt Sample Site
- △ Water Sample Site
- ▭ Claim Group Boundary
- ± Swamp Area
- ↔ Creek and Direction of Flow



AMAX EXPLORATION INC.

HEATH Cu PROSPECT
OMINECA MINING DIVISION - BRITISH COLUMBIA

GEOCHEMISTRY

SAMPLE RESULTS AND LOCATION

SCALE 1 INCH = 400 FEET

DATE	DRAWN BY	DATE	FIG. NO.
REVISED	N.S.	August 12, 1969	Fig. 5
DATE	DATE	DATE	DATE
PLotted	Checked	Reviewed	Approved

To Accompany Report "HEATH Cu PROSPECT" by H.T. Dummett and J.F. [unclear] Date Aug 11, 1969

812774

32 200