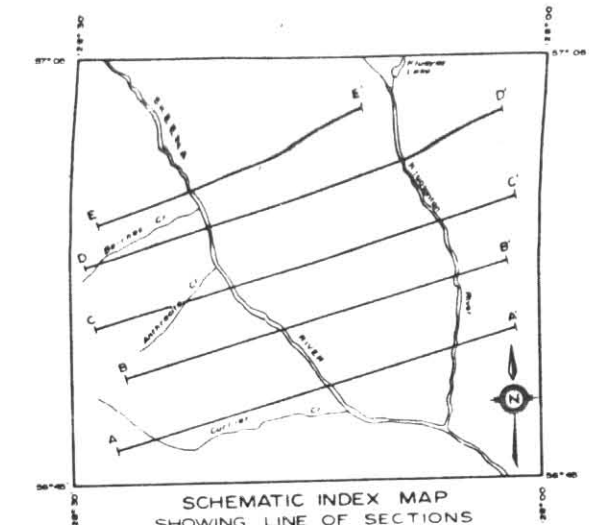
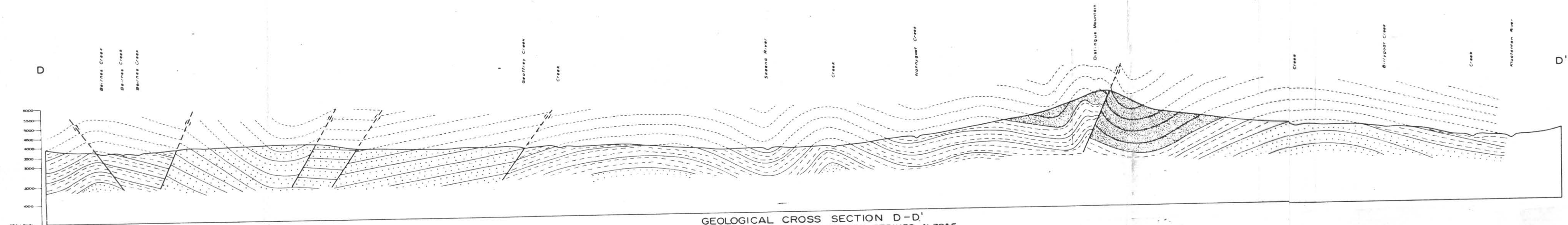


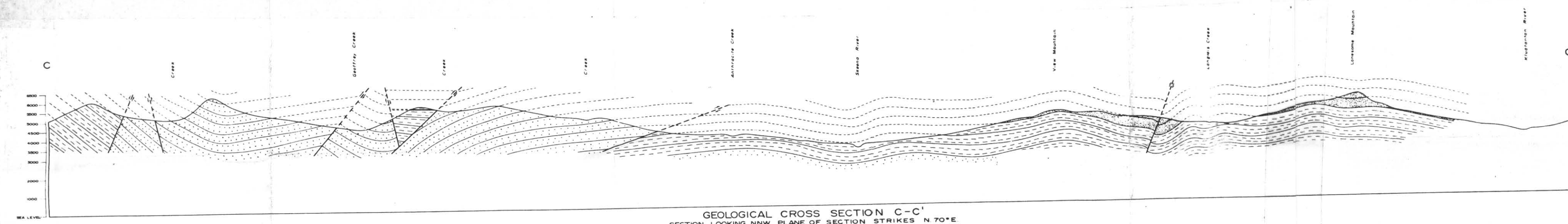
GEOLOGICAL CROSS SECTION E-E'
SECTION LOOKING NNW, PLANE OF SECTION STRIKES N 61° E.



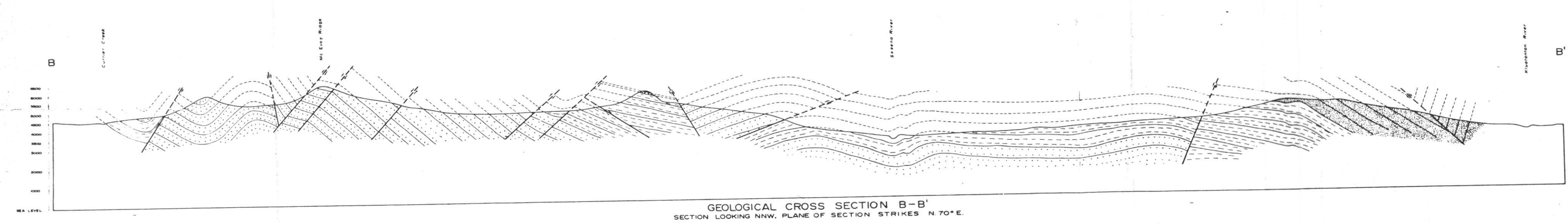
SCHEMATIC INDEX MAP
SHOWING LINE OF SECTIONS



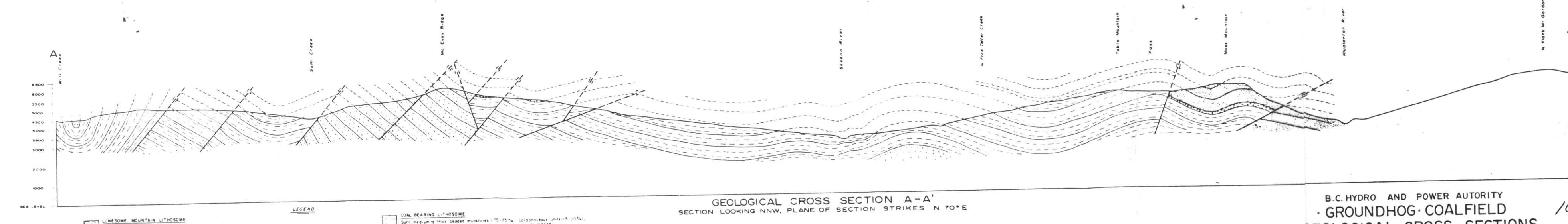
GEOLOGICAL CROSS SECTION D-D'
SECTION LOOKING NNW, PLANE OF SECTION STRIKES N 70° E.



GEOLOGICAL CROSS SECTION C-C'
SECTION LOOKING NNW, PLANE OF SECTION STRIKES N 70° E.

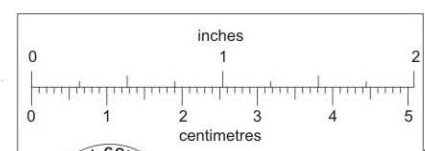


GEOLOGICAL CROSS SECTION B-B'
SECTION LOOKING NNW, PLANE OF SECTION STRIKES N 70° E.



GEOLOGICAL CROSS SECTION A-A'
SECTION LOOKING NNW, PLANE OF SECTION STRIKES N 70° E.

- LEGEND**
- LINGSOME MOUNTAIN LITHOSOME
Sandy, brown colored, well rounded, angular to sub-angular, conchoidal, micaceous, and mica like, elongation 100:1 to 200:1.
 - COAL BEARING LITHOSOME
Silt, shale to fine grained, micaceous, 10:1 to 20:1, conchoidal, lenticular, and gray, carbonaceous, (C₁) with tabular, micaceous, brown to black.
 - DEVILS CLAW CONGLOMERATE LITHOSOME
This banded, coarse grained, chert pebbles conglomerate interbedded with mudstone, sandstone, and siltstone.
 - MCEVOY RIDGE LITHOSOME
Dark colored, well sorted, micaceous, granular, with some fine grained sandstone and some conchoidal mica. Every bedded, 1.5 feet thick.



This reference scale bar has been added to the original image. It will scale at the same rate as the image, therefore it can be used as a reference for the original size.

B.C. HYDRO AND POWER AUTHORITY
GROUNDHOG COALFIELD
GEOLOGICAL CROSS SECTIONS
FEET 2000 0 2000 4000 6000 FEET
SCALE
WILLARD D. TOMPSON

104-A-16

PLATE II

812625