

J+K Claims

MAPS W-150-1 to 13

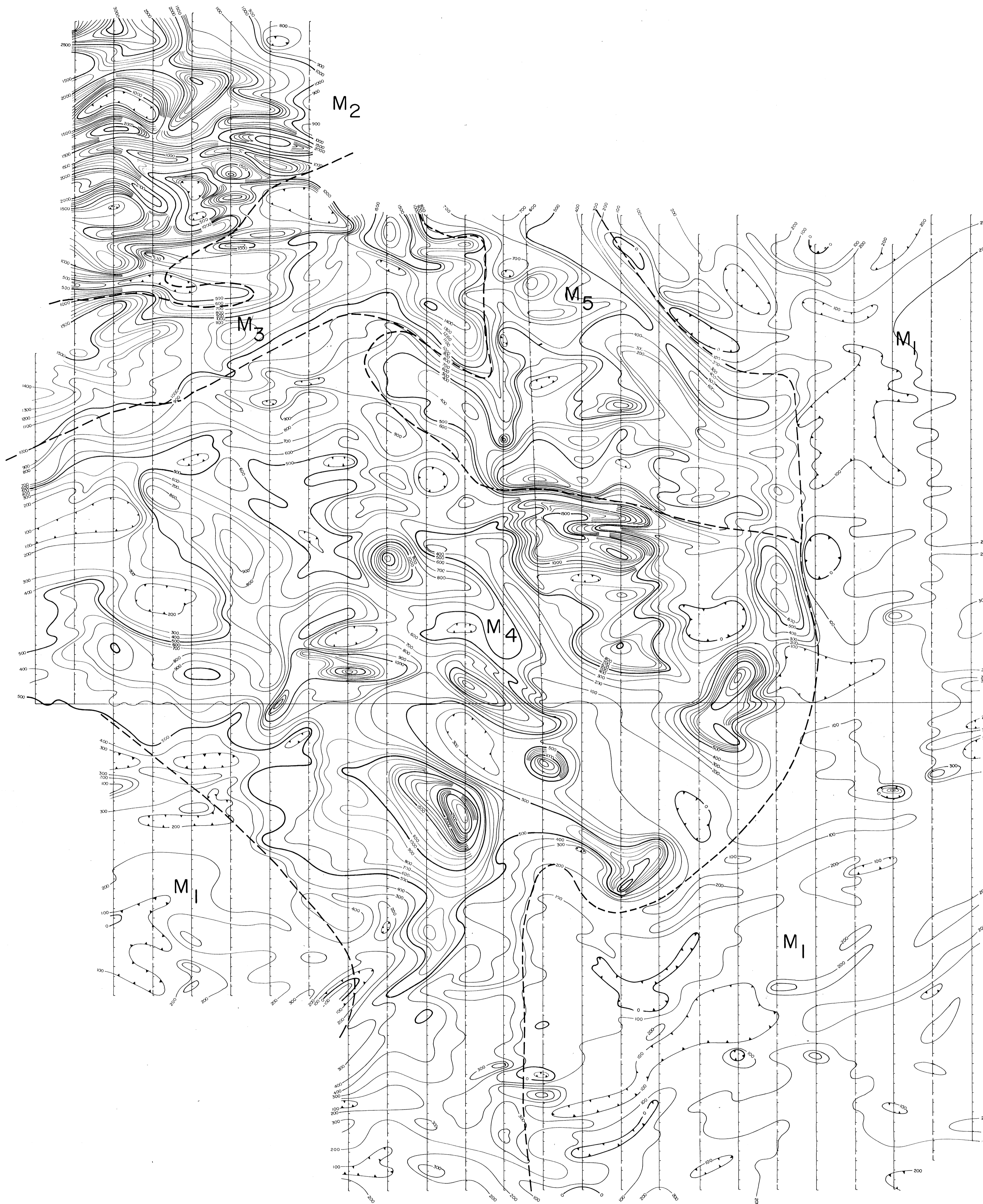
*920-13
Scum
Lake*

to accompany a report by
Peter E. Walcott, P.Eng.

Dated February 1973

812551



260 N
 250 N
 240 N
 230 N
 220 N
 210 N
 200 N
 190 N
 180 N
 170 N
 160 N
 150 N
 140 N

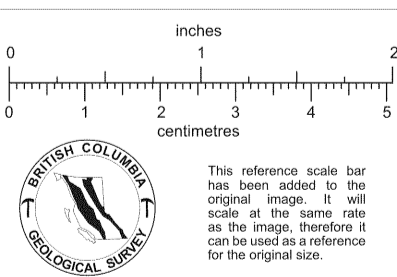


48 E 52 E 56 E 60 E 64 E 68 E 72 E 76 E 80 E 84 E 88 E 92 E 96 E 100 E 104 E 108 E 112 E 116 E 120 E 124 E 128 E 132 E 136 E 140 E 144 E



LEGEND

-  Magnetic Contact
-  Magnetic Rock Unit



CYPRUS EXPLORATION CORPORATION LTD.
 SCUM LAKE PROJECT
 CLINTON MINING DIVISION, BRITISH COLUMBIA

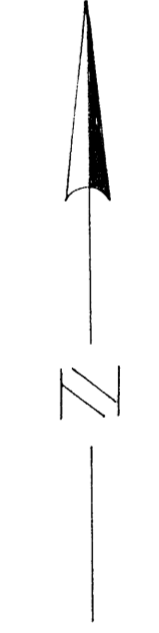
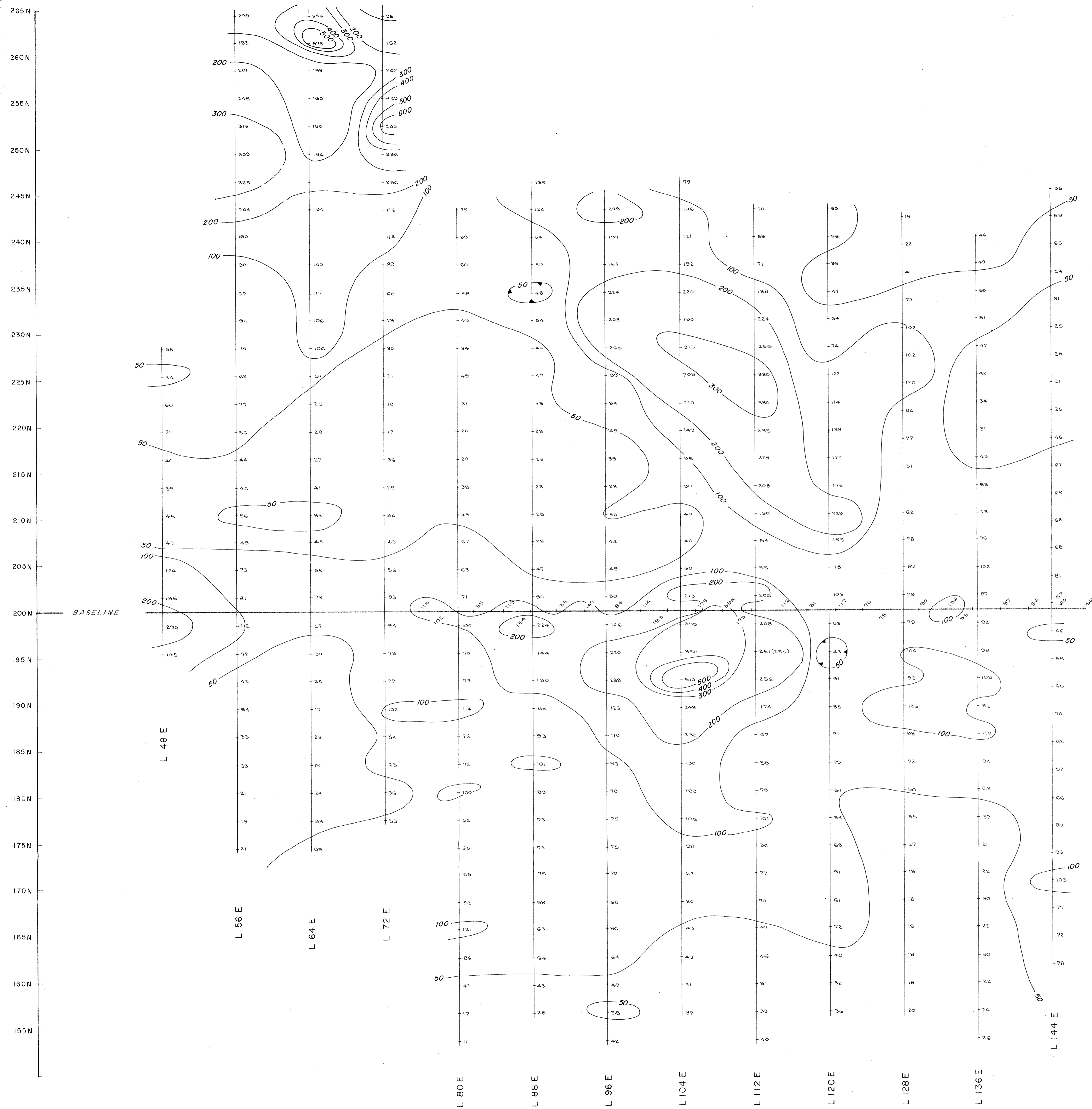
MAGNETOMETER SURVEY CONTOUR PLAN

MAP NO. W-150-13

SCALE IN FEET
 0 500 1000 1500 2000

JUNE, 1972

P. H.



CYPRUS EXPLORATION CORPORATION LTD.

K & J CLAIMS, SCUM LAKE AREA; CLINTON M.D., B.C.

INDUCED POLARIZATION SURVEY
 CONTOURS OF APPARENT RESISTIVITY ($\rho_a/2\pi$)
 $a = 300'$; $n = 1$

SCALE: 1 INCH = 500 FEET

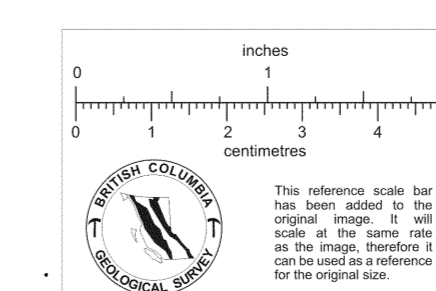


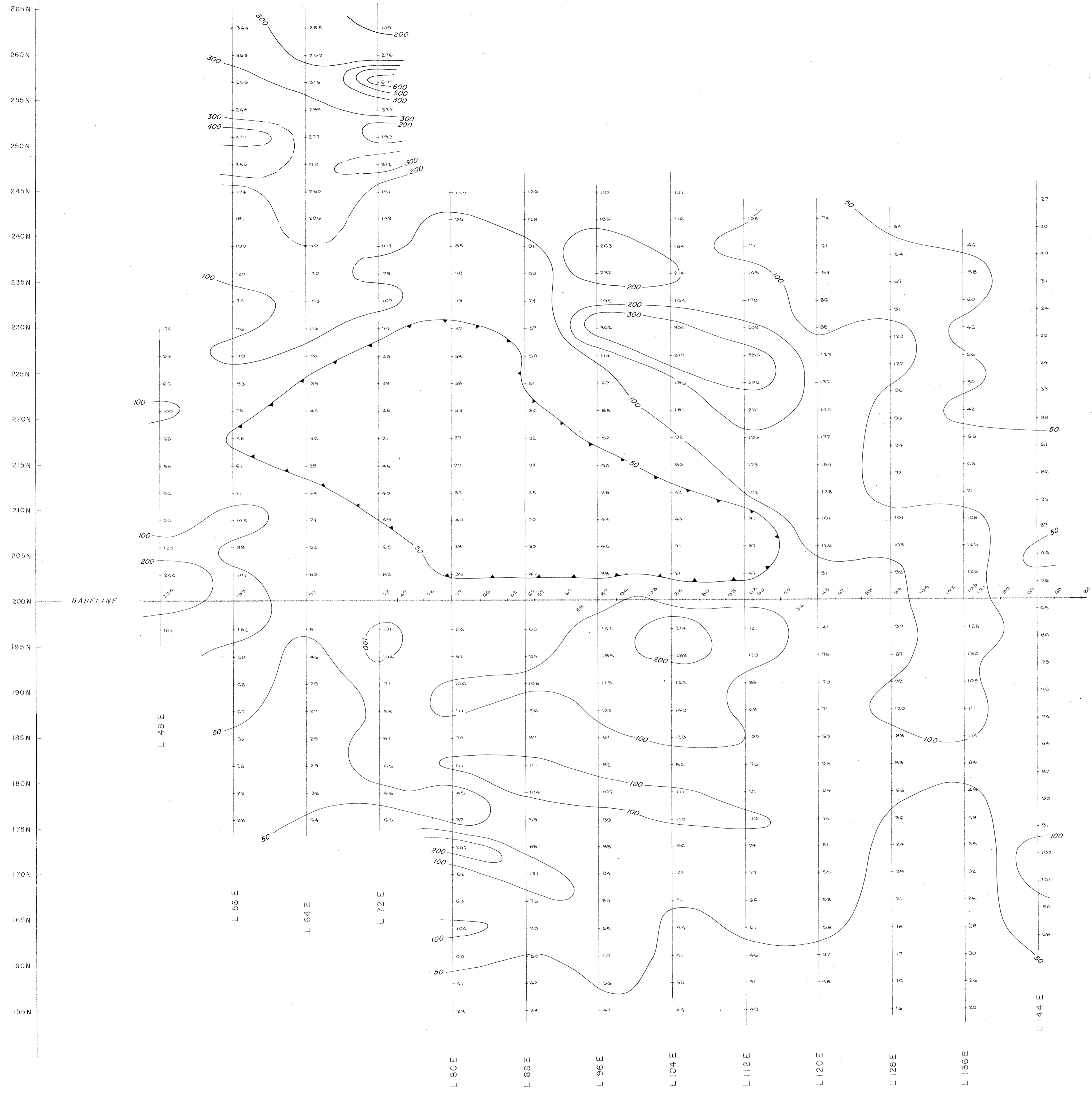
MAP No. W-150-1

TO ACCOMPANY A REPORT BY
 PETER E. WALCOTT, P. Eng.
 DATED - OCTOBER, 1972

PETER E. WALCOTT & ASSOC. LTD.

MAY - JUNE, 1972





CYPRUS EXPLORATION CORPORATION LTD.

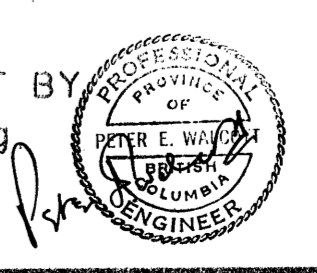
K & J CLAIMS, SCUM LAKE AREA ; CLINTON M.D., B.C.

INDUCED POLARIZATION SURVEY
 CONTOURS OF APPARENT RESISTIVITY ($\rho_a/2\pi$)
 $a = 300''$; $n = 2$

SCALE: 1 INCH = 500 FEET

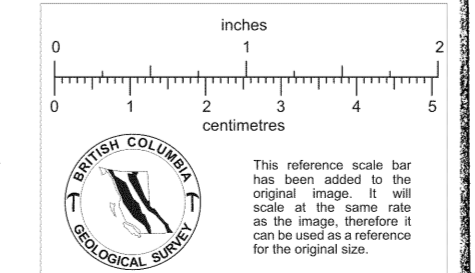


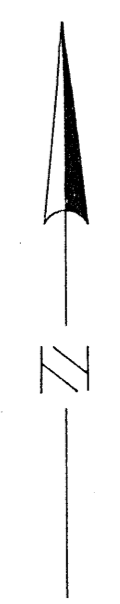
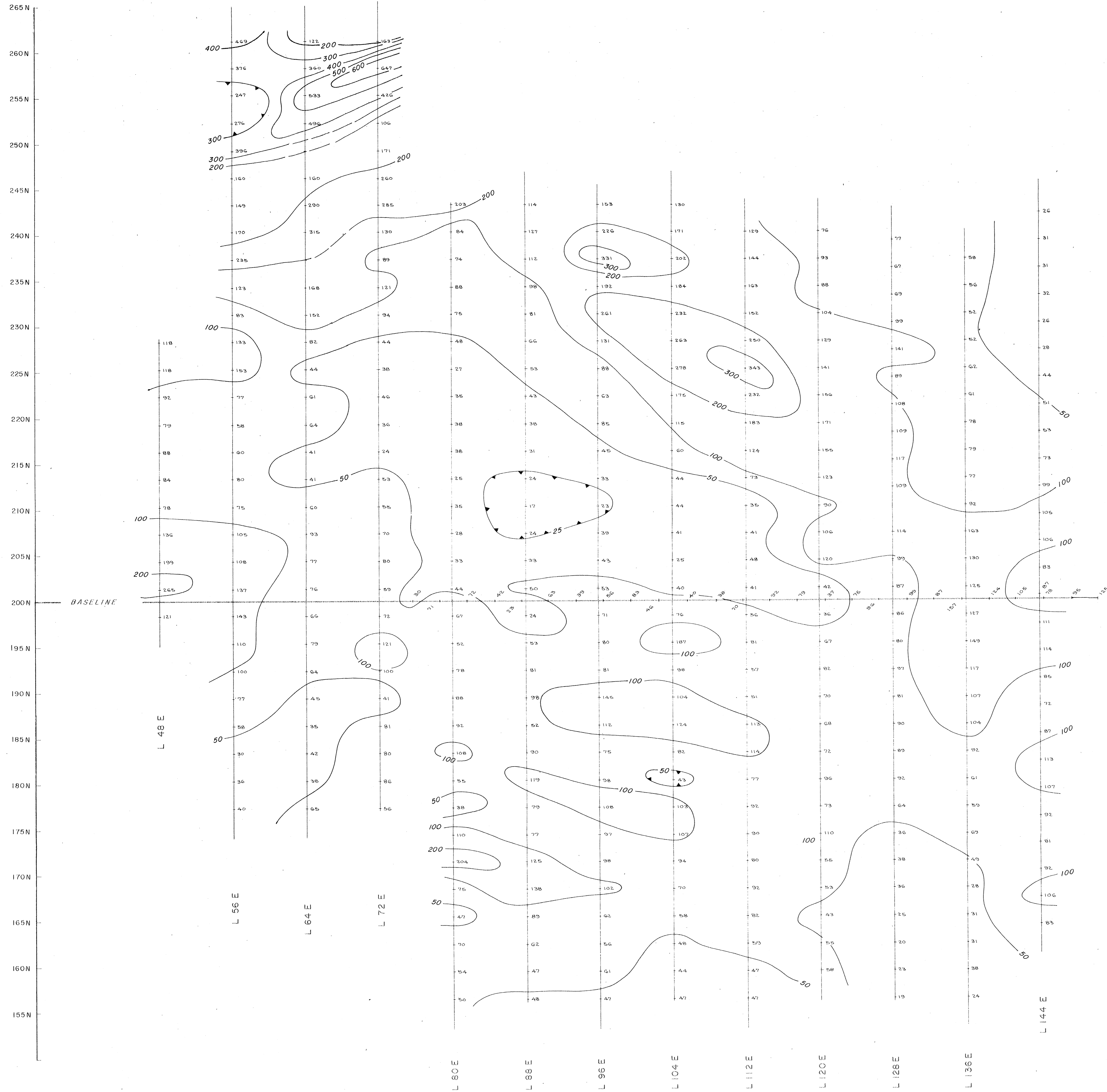
MAP No. W-150-2
 TO ACCOMPANY A REPORT BY
 PETER E. WALCOTT, P. Eng.
 DATED - OCTOBER, 1972



PETER E. WALCOTT & ASSOC. LTD.

MAY - JUNE, 1972



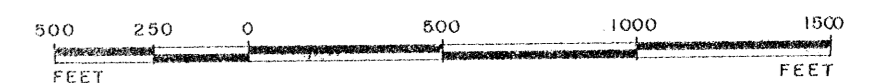


CYPRUS EXPLORATION CORPORATION LTD.

K & J CLAIMS, SCUM LAKE AREA; CLINTON M.D., B.C.

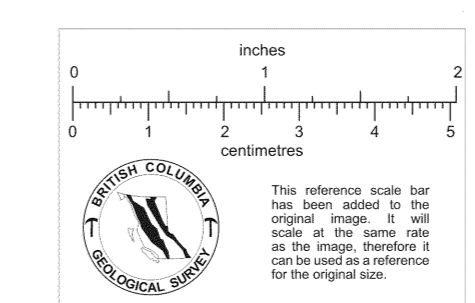
INDUCED POLARIZATION SURVEY
 CONTOURS OF APPARENT RESISTIVITY ($\rho_a/2\pi$)
 $a = 300''$; $n = 3$

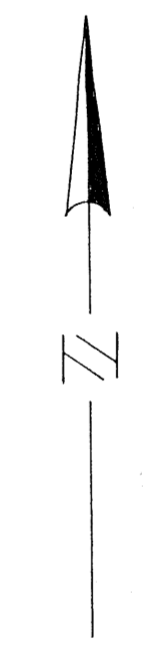
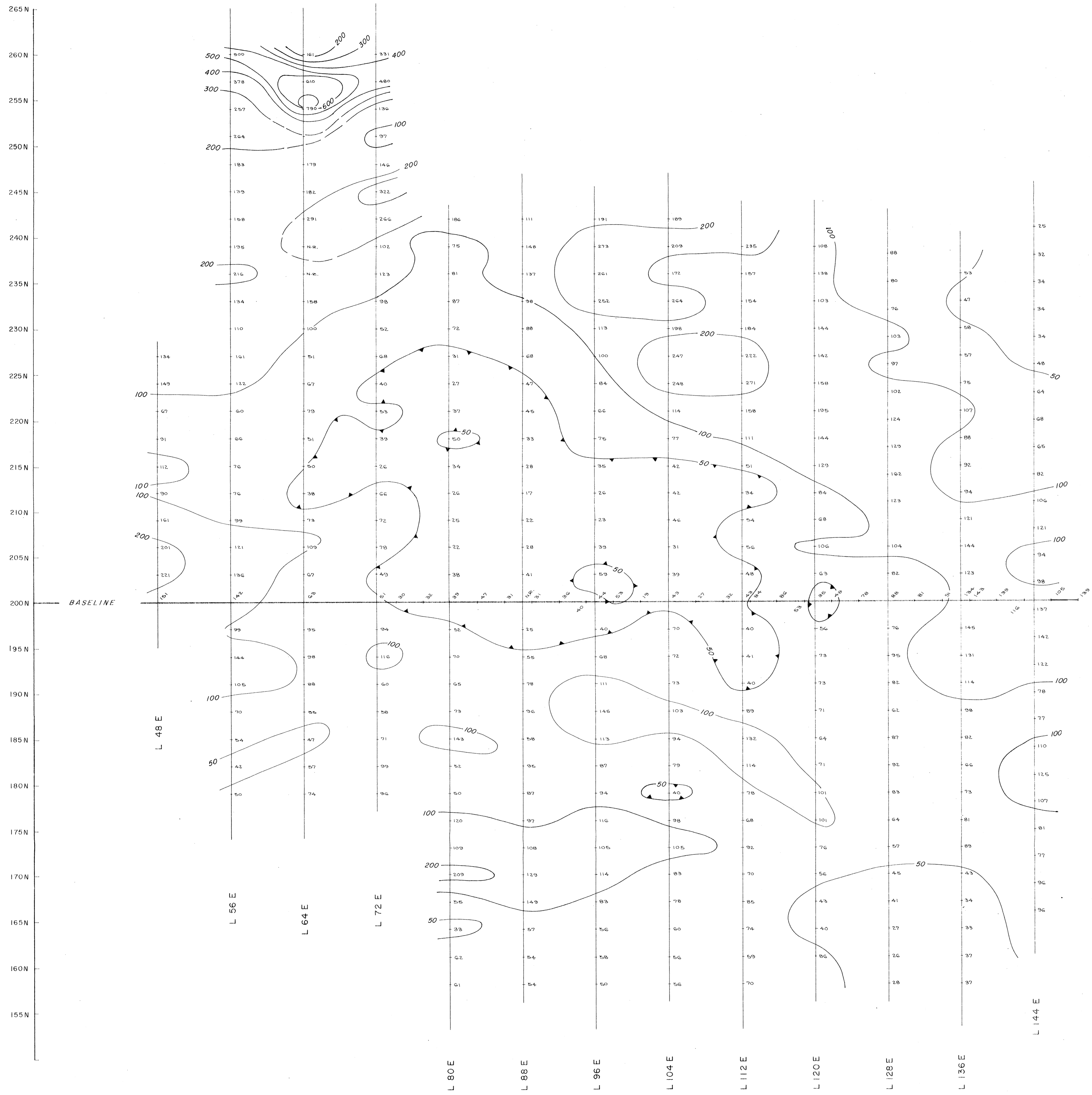
SCALE: 1 INCH = 500 FEET



MAP No. W-150-3
 TO ACCOMPANY A REPORT BY
 PETER E. WALCOTT, P. Eng.
 DATED - OCTOBER, 1972

PETER E. WALCOTT & ASSOC. LTD.
 MAY - JUNE, 1972



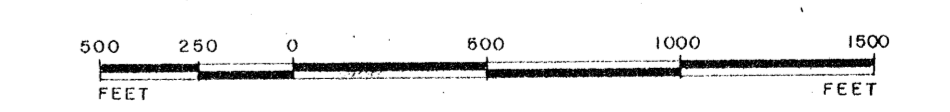


CYPRUS EXPLORATION CORPORATION LTD.

K & J CLAIMS, SCUM LAKE AREA ; CLINTON M.D., B.C.

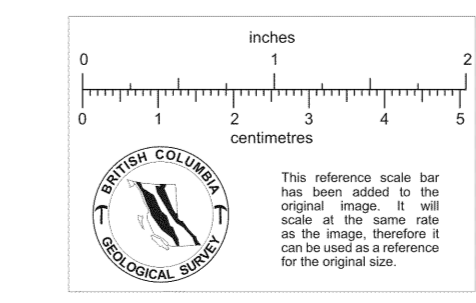
INDUCED POLARIZATION SURVEY
 CONTOURS OF APPARENT RESISTIVITY ($P_a/2\pi$)
 $a = 300'$; $n = 4$

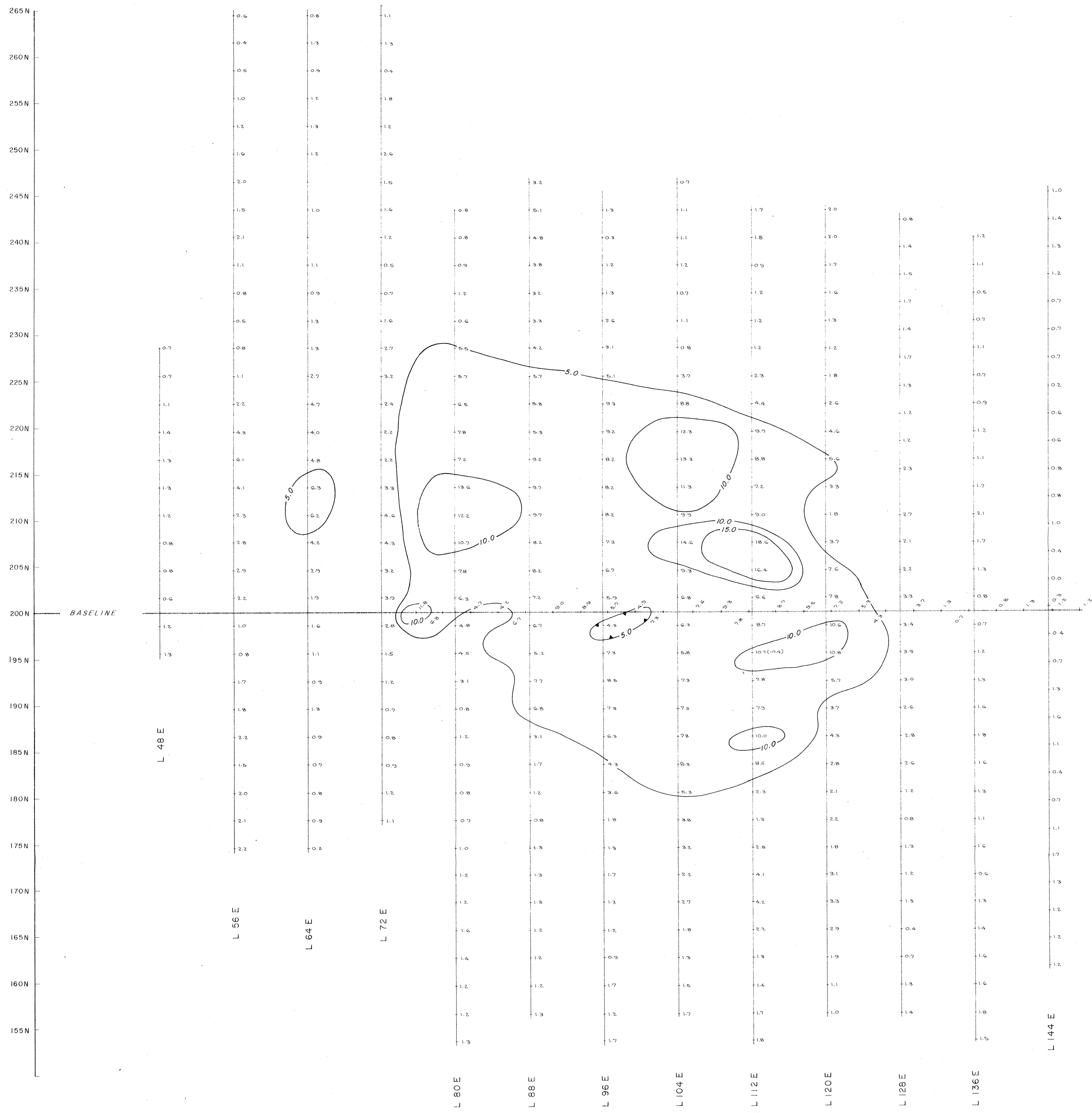
SCALE: 1 INCH = 500 FEET



MAP No. W - 150 - 4
 TO ACCOMPANY A REPORT BY
 PETER E. WALCOTT, P. Eng.
 DATED - OCTOBER, 1972

PETER E. WALCOTT & ASSOC. LTD.
 MAY - JUNE, 1972





CYPRUS EXPLORATION CORPORATION LTD.

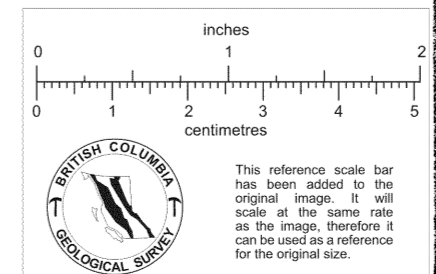
K & J CLAIMS, SCUM LAKE AREA ; CLINTON M.D., B.C.

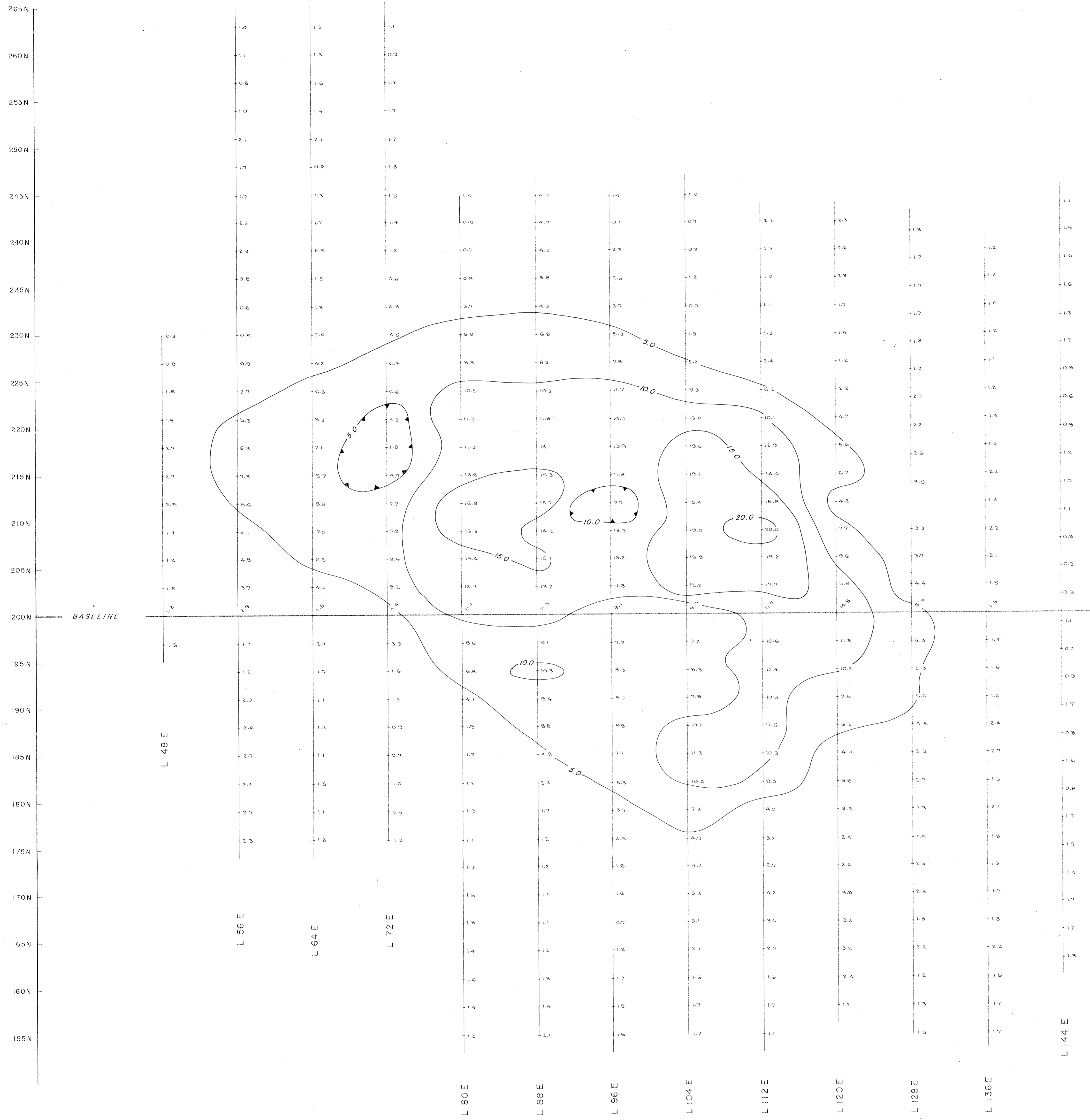
INDUCED POLARIZATION SURVEY
 CONTOURS OF APPARENT FREQUENCY EFFECT (%)
 $\alpha = 300''$; $n = 1$

SCALE : 1 INCH = 500 FEET

MAP No. W - 150 - 5
 TO ACCOMPANY A REPORT BY
 PETER E. WALCOTT, P. Eng.
 DATED - OCTOBER, 1972

PETER E. WALCOTT & ASSOC. LTD.
 MAY - JUNE, 1972



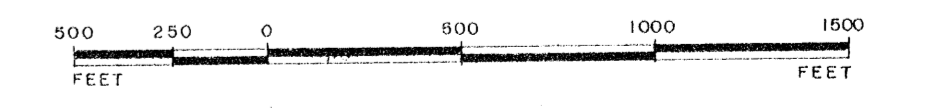


CYPRUS EXPLORATION CORPORATION LTD.

K & J CLAIMS, SCUM LAKE AREA; CLINTON M.D., B.C.

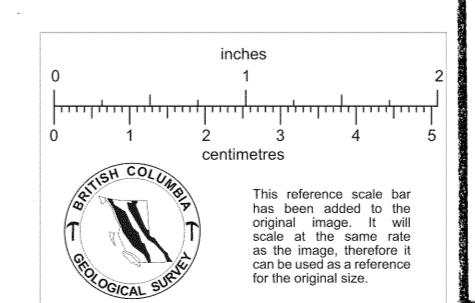
INDUCED POLARIZATION SURVEY
 CONTOURS OF APPARENT FREQUENCY EFFECT (%)
 $\alpha = 300^\circ$; $n = 2$

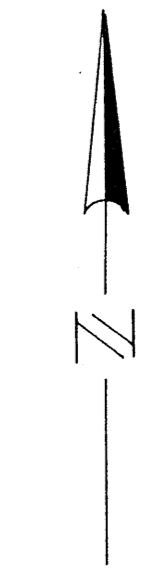
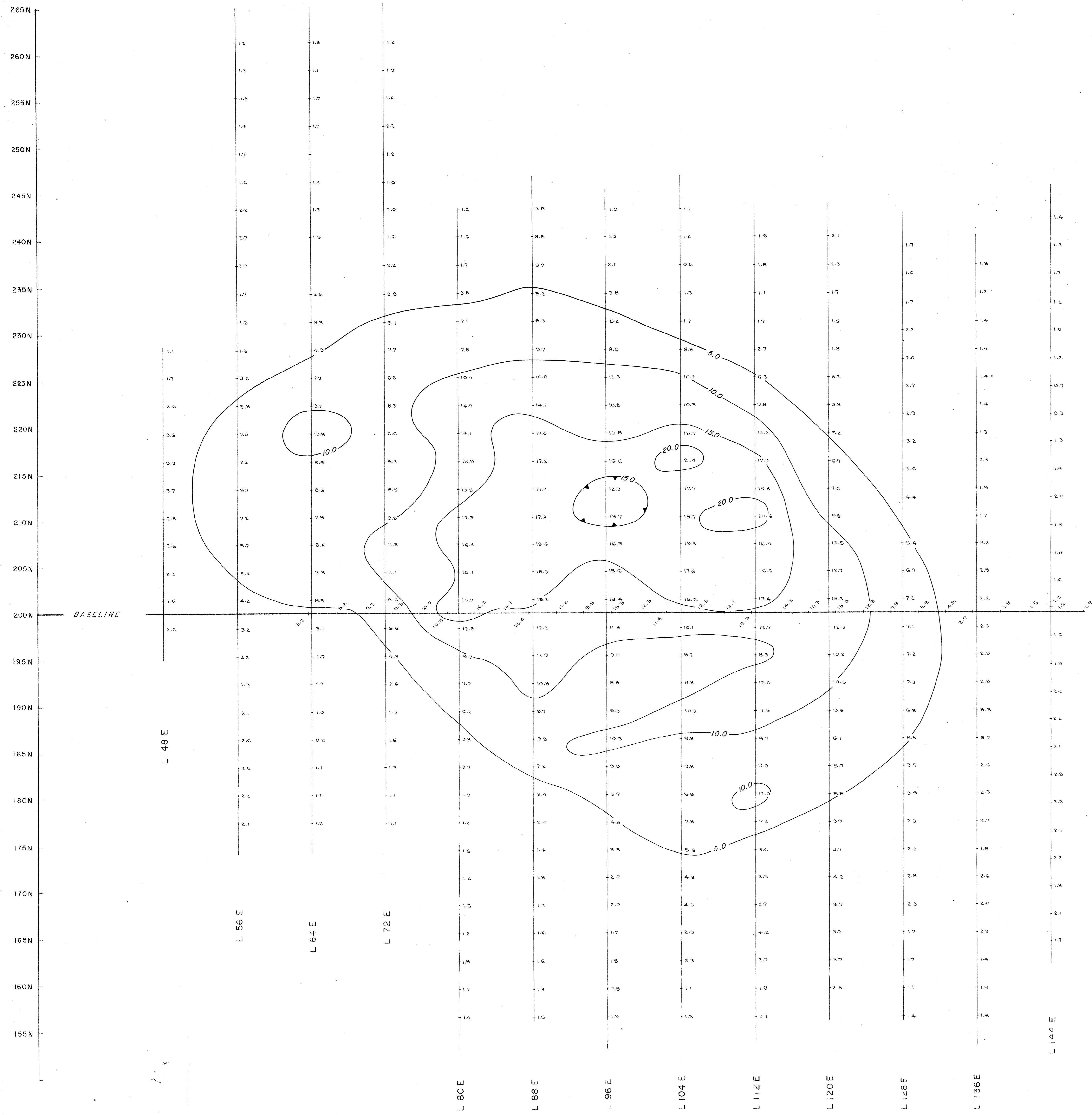
SCALE: 1 INCH = 500 FEET



MAP No. W-150-6
 TO ACCOMPANY A REPORT BY
 PETER E. WALCOTT, P. Eng.
 DATED - OCTOBER, 1972

PETER E. WALCOTT & ASSOC. LTD.
 MAY - JUNE, 1972





CYPRUS EXPLORATION CORPORATION LTD.

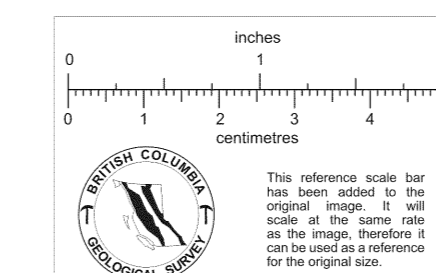
K & J CLAIMS, SCUM LAKE AREA; CLINTON M.D., B.C.

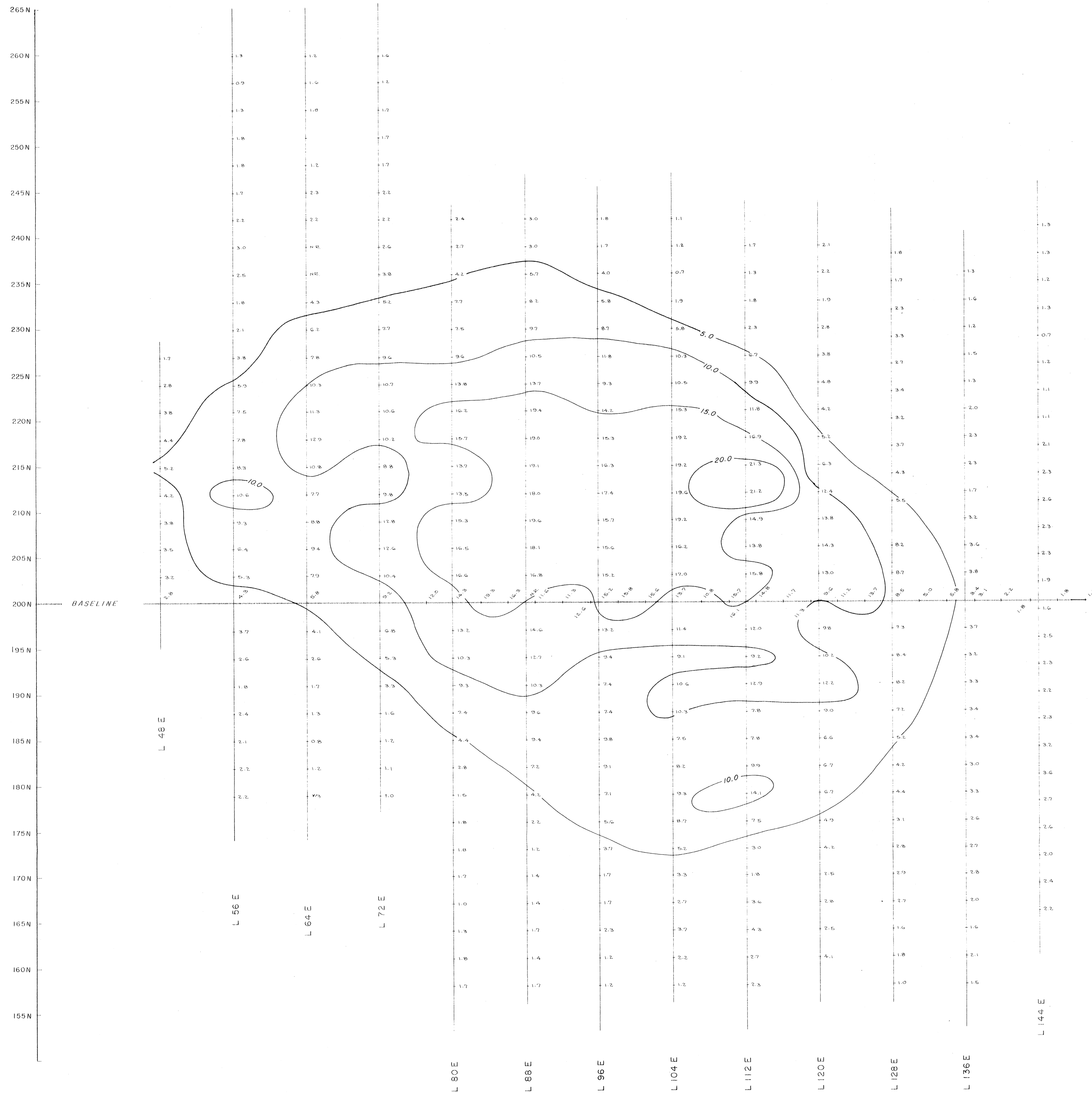
INDUCED POLARIZATION SURVEY
 CONTOURS OF APPARENT FREQUENCY EFFECT (%)
 $a = 300''$; $n = 3$

SCALE: 1 INCH = 500 FEET

MAP No. W-150-7
 TO ACCOMPANY A REPORT BY
 PETER E. WALCOTT, P. Eng.
 DATED - OCTOBER, 1972

PETER E. WALCOTT & ASSOC. LTD.
 MAY - JUNE, 1972



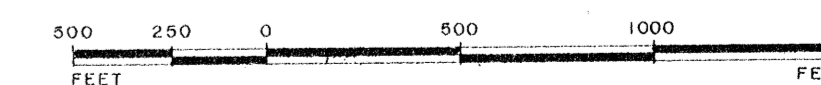


CYPRUS EXPLORATION CORPORATION LTD.

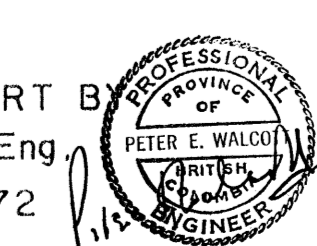
K & J CLAIMS, SCUM LAKE AREA; CLINTON M.D., B.C.

INDUCED POLARIZATION SURVEY
 CONTOURS OF APPARENT FREQUENCY EFFECT (%)
 $a = 300''$; $n = 4$

SCALE: 1 INCH = 500 FEET

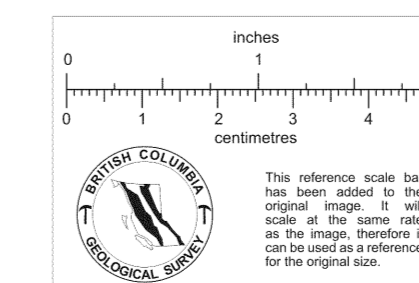


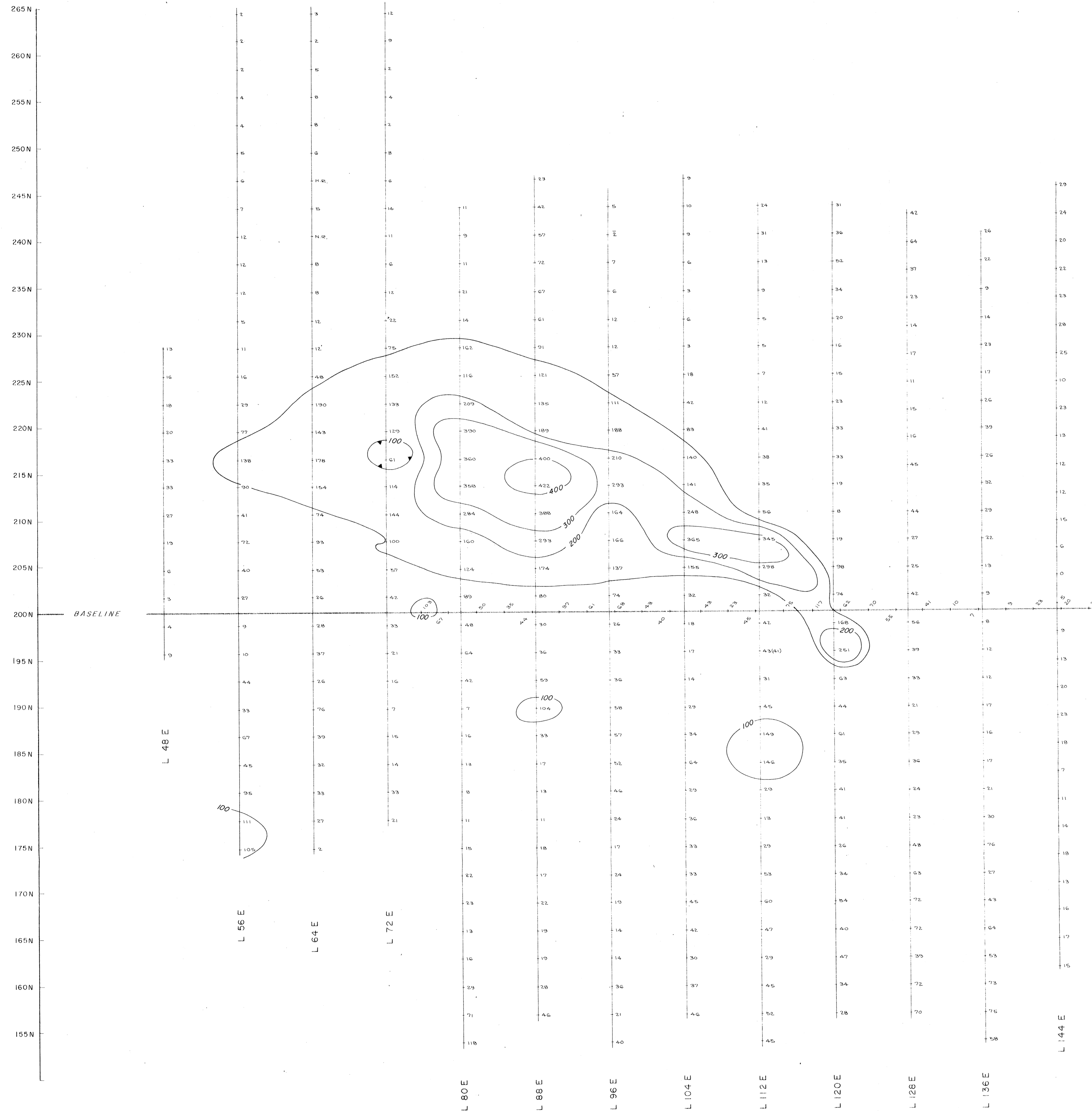
MAP No. W - 150 - 8
 TO ACCOMPANY A REPORT BY
 PETER E. WALCOTT, P. Eng.
 DATED - OCTOBER, 1972



PETER E. WALCOTT & ASSOC. LTD.

MAY - JUNE, 1972





CYPRUS EXPLORATION CORPORATION LTD.

K & J CLAIMS, SCUM LAKE AREA ; CLINTON M.D., B.C.

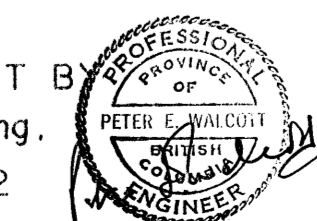
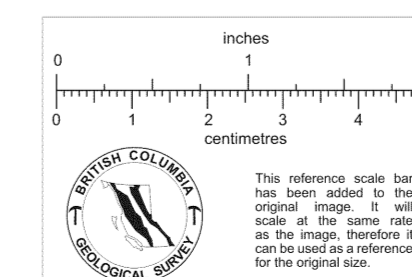
INDUCED POLARIZATION SURVEY
 CONTOURS OF APPARENT METAL FACTOR
 $\alpha = 300''$; $n = 1$

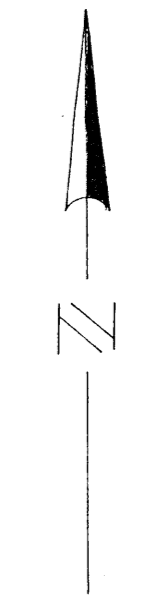
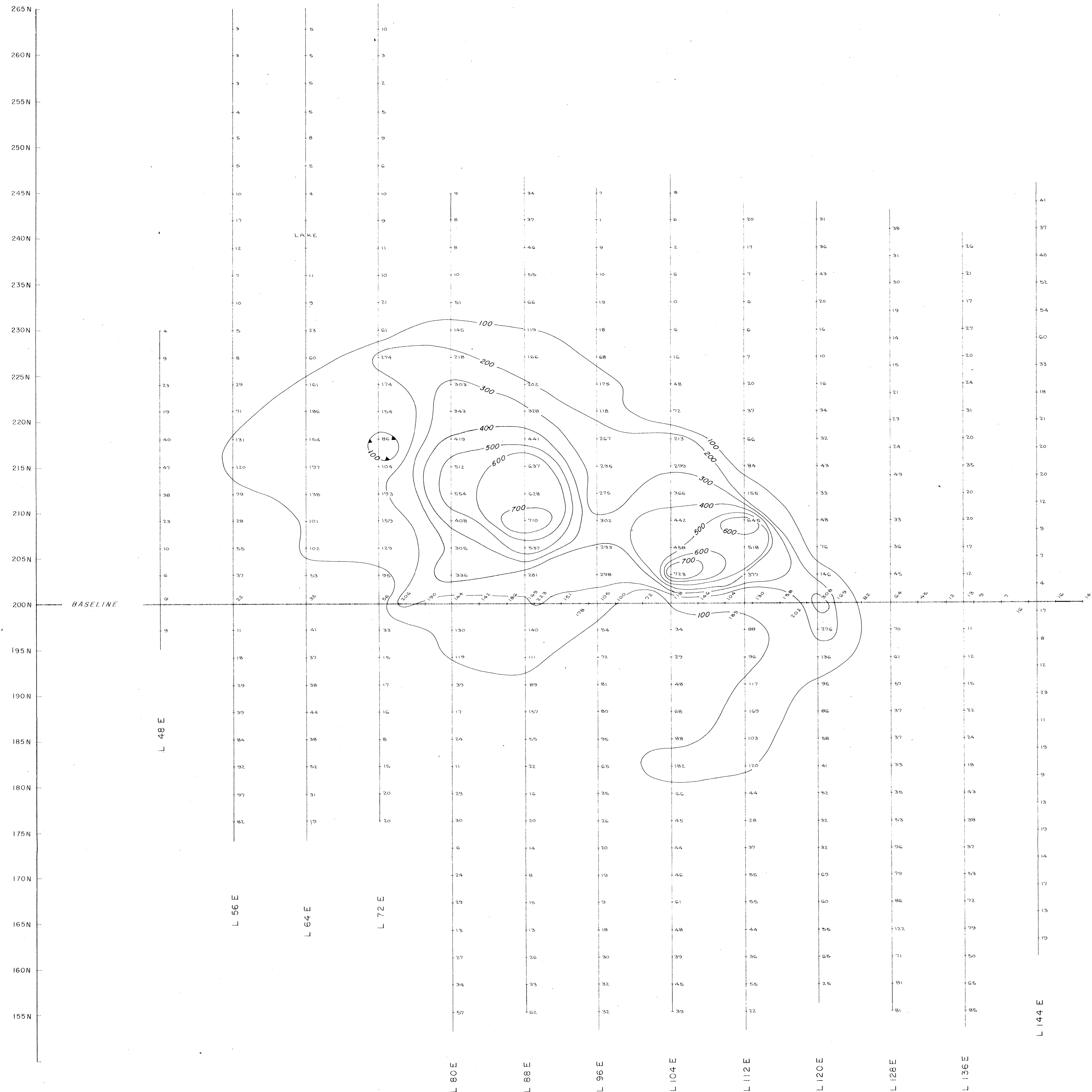
SCALE : 1 INCH = 500 FEET

0 250 500 1000 1500
 FEET FEET

MAP No. W - 150 - 9
 TO ACCOMPANY A REPORT BY
 PETER E. WALCOTT, P. Eng.
 DATED - OCTOBER, 1972

PETER E. WALCOTT & ASSOC. LTD.
 MAY - JUNE, 1972





CYPRUS EXPLORATION CORPORATION LTD.

K & J CLAIMS, SCUM LAKE AREA; CLINTON M.D., B.C.

INDUCED POLARIZATION SURVEY
 CONTOURS OF APPARENT METAL FACTOR
 $a = 300'$; $n = 2$

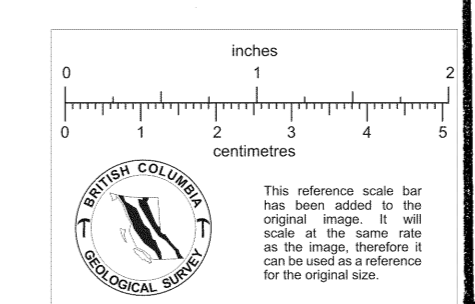
SCALE: 1 INCH = 500 FEET

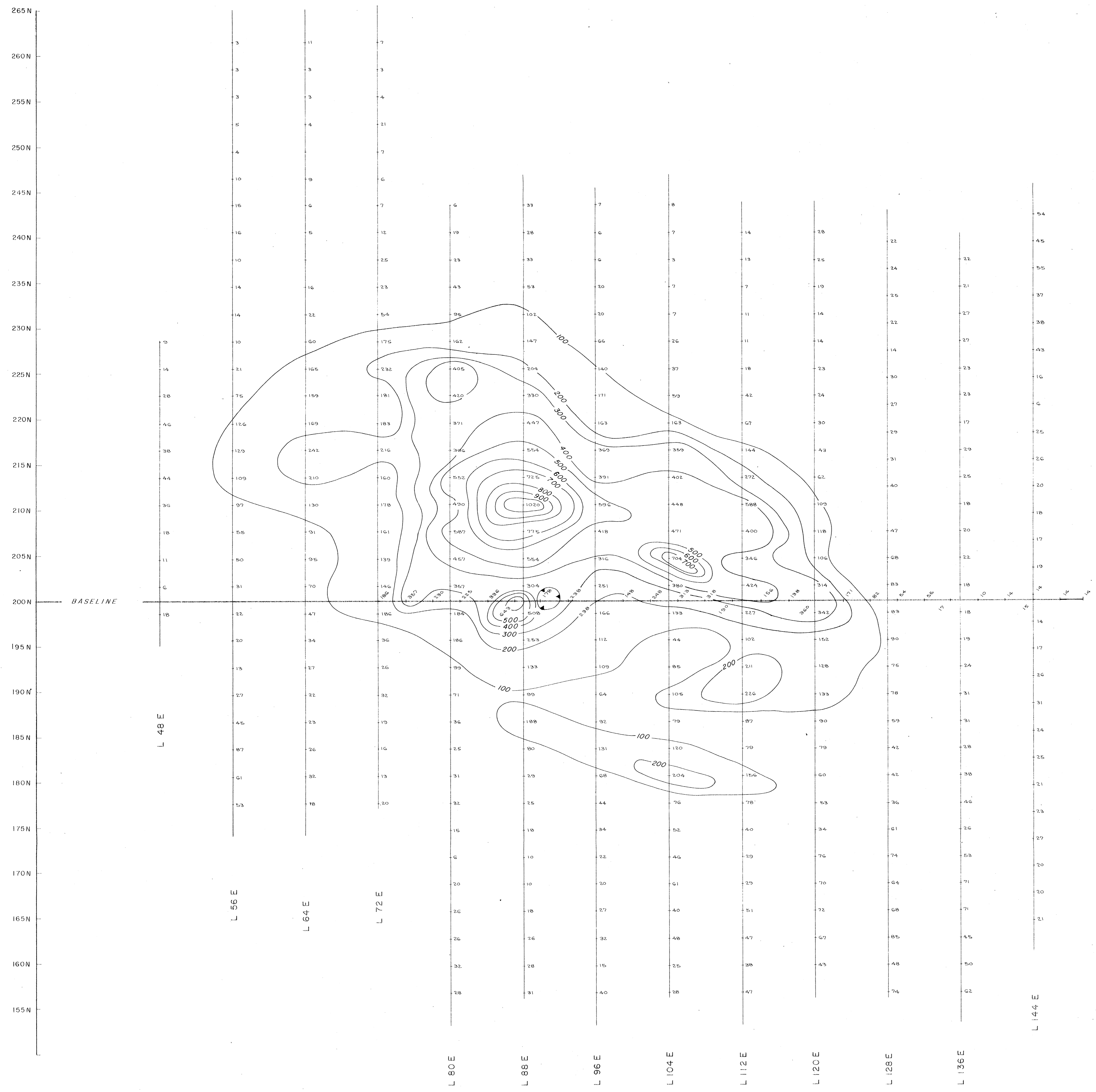


MAP No. W-150-10
 TO ACCOMPANY A REPORT BY
 PETER E. WALCOTT, P. Eng.
 DATED - OCTOBER, 1972

PETER E. WALCOTT & ASSOC. LTD.

MAY - JUNE, 1972





CYPRUS EXPLORATION CORPORATION LTD.

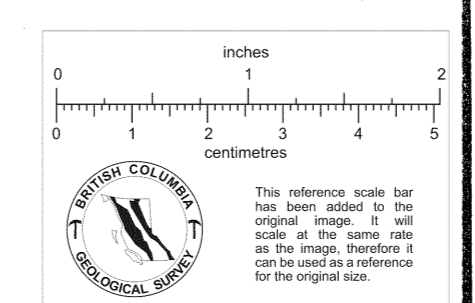
K & J CLAIMS, SCUM LAKE AREA ; CLINTON M.D., B.C.

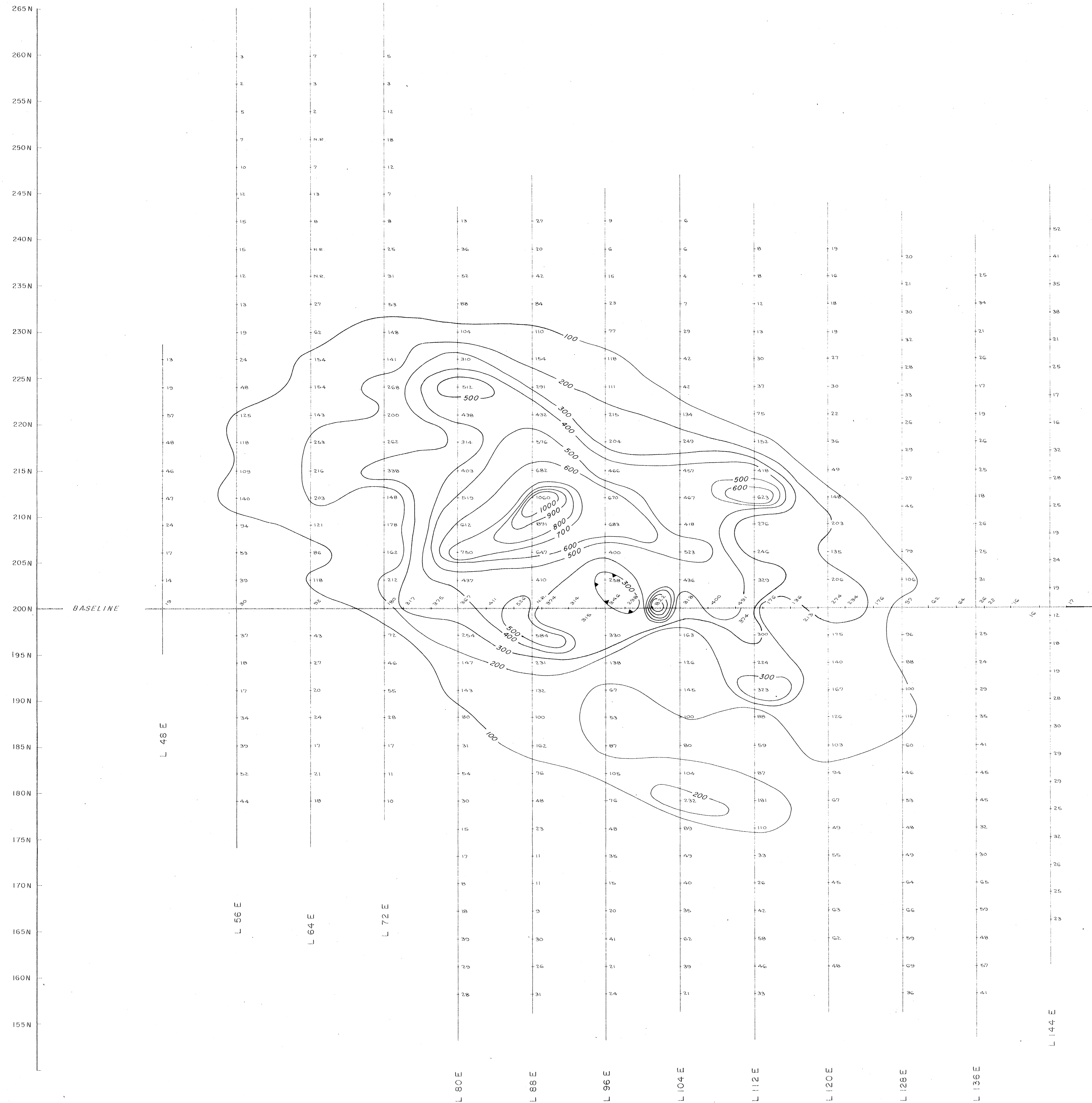
INDUCED POLARIZATION SURVEY
 CONTOURS OF APPARENT METAL FACTOR
 $a = 300''$; $n = 3$

SCALE : 1 INCH = 500 FEET

MAP No. W - 150 - 11
 TO ACCOMPANY A REPORT BY
 PETER E. WALCOTT, P. Eng.
 DATED - OCTOBER, 1972

PETER E. WALCOTT & ASSOC. LTD.
 MAY - JUNE, 1972





CYPRUS EXPLORATION CORPORATION LTD.

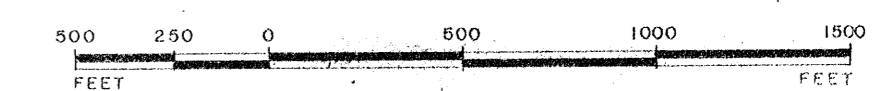
K & J CLAIMS, SCUM LAKE AREA; CLINTON M.D., B.C.

INDUCED POLARIZATION SURVEY

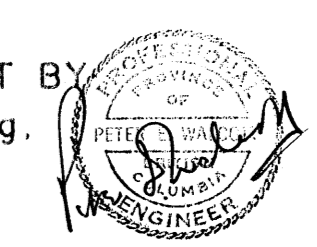
CONTOURS OF APPARENT METAL FACTOR

$a = 300''$; $n = 4$

SCALE: 1 INCH = 500 FEET



MAP No. W-150-12
 TO ACCOMPANY A REPORT BY
 PETER E. WALCOTT, P. Eng.
 DATED - OCTOBER, 1972



PETER E. WALCOTT & ASSOC. LTD.

MAY - JUNE, 1972

