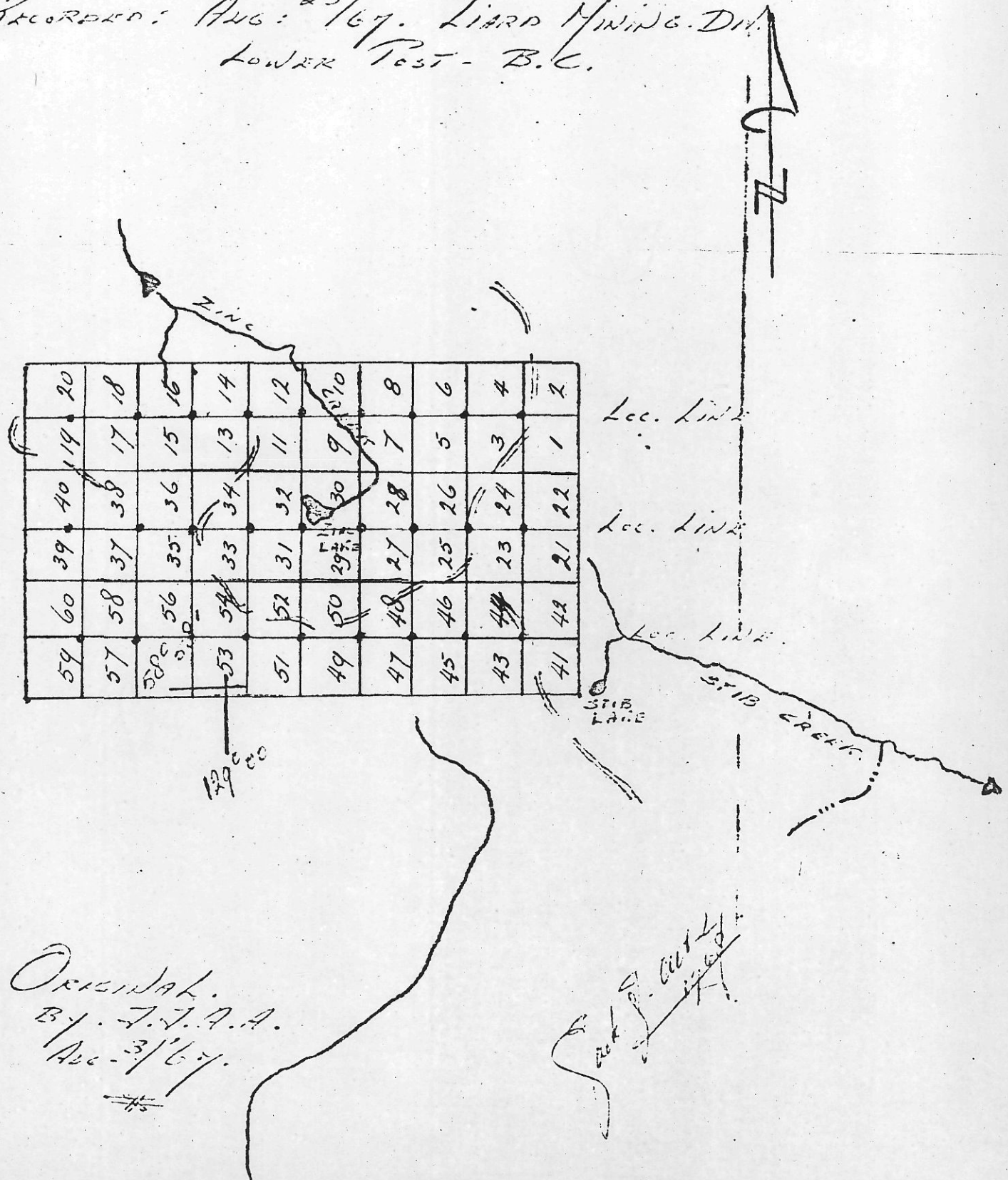




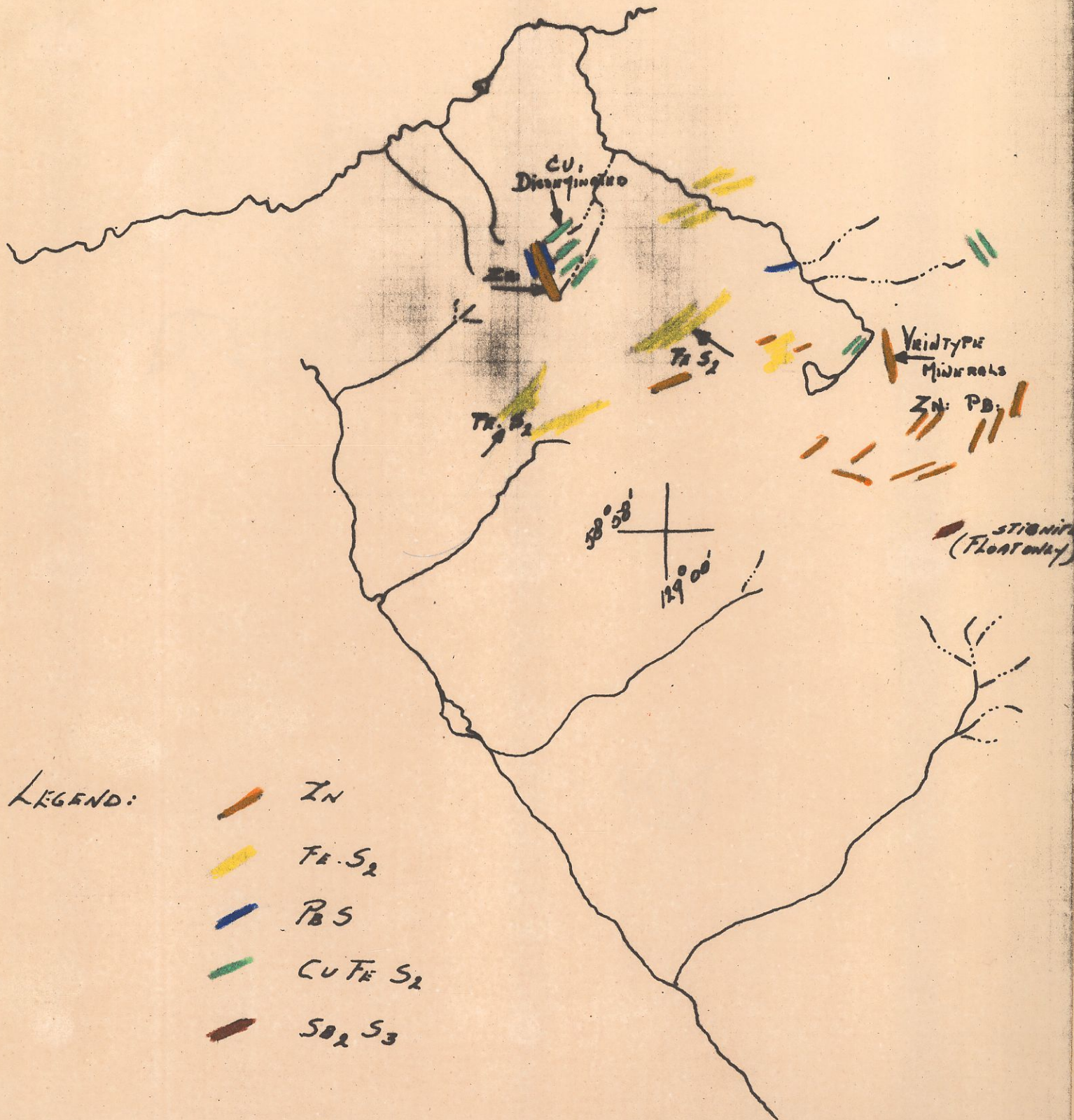
By *W. H. ALTENBURG*. AUG = 25/67. MAP 104-1
 NIZI CREEK - B.C. AIR PHOTO - A-12111-281.
 60 CLAIM GROUP. B.C.

RECORDED: AUG: 25/67. LIARD MINING DIV.
 LOWER TEST - B.C.



ORIGINAL.
 BY J. J. A. A.
 AUG - 3/67.

W. H. ALTENBURG





LEGEND:

-  Zn
-  TR S₂
-  Pb S
-  CU TR S₂
-  SO₂ S₃

Scale: 1" = 3000'



-  Sb_2 S_3
-  Zn & Pb

By: J.J.A. ALTENBURG

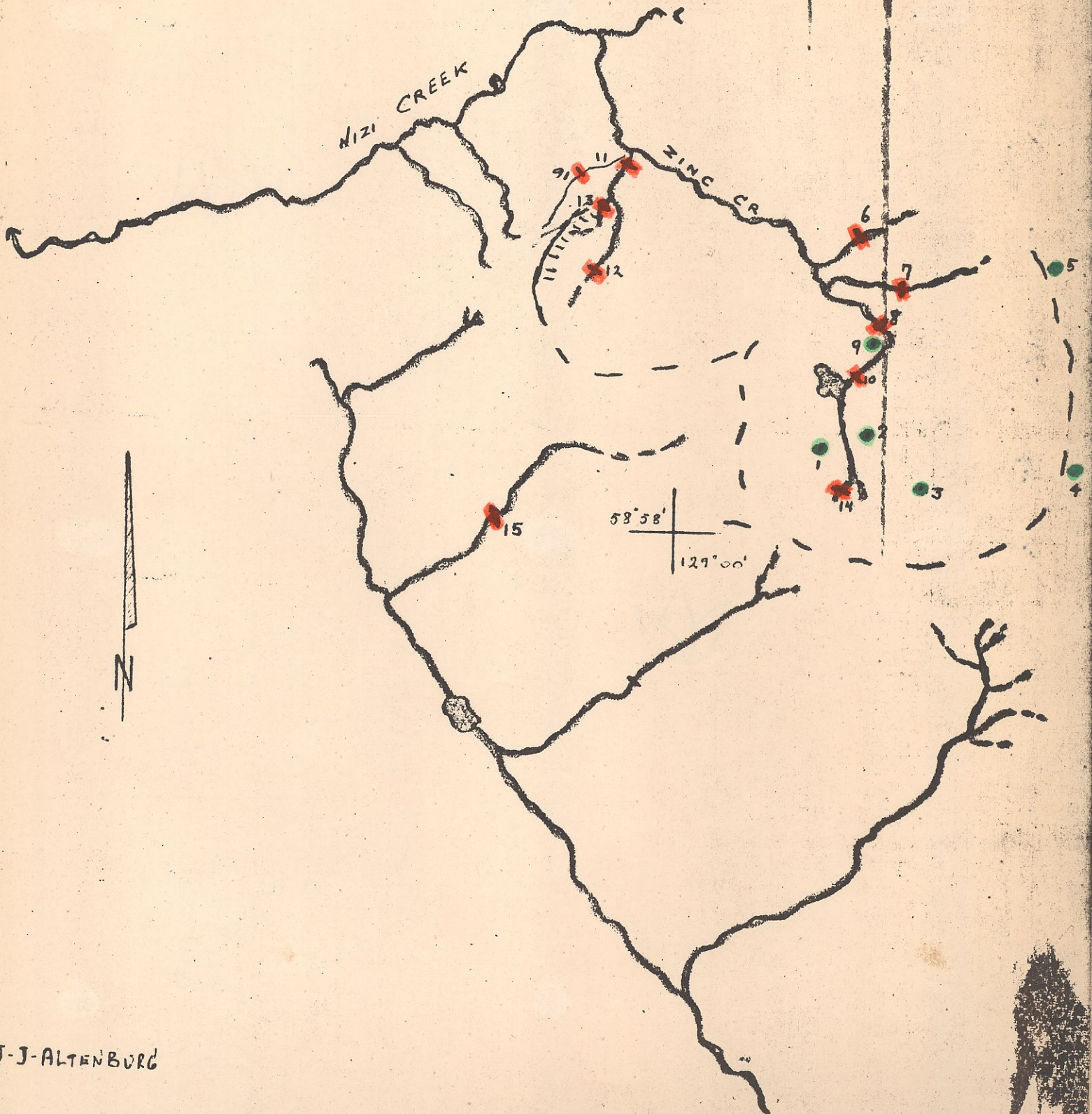
NIZI CREEK CLAIM GROUP

AIR PHOTO A-12111-282-BC

SCALE: 1" = 300' (approx)

MAP: 10-11-1

SOIL SAMPLES ●
SILT SAMPLES ■



J-J-ALTENBURG

SOIL & SILT MAP

CANEX AERIAL EXPLORATION LTD.

AREA NIZ

ANALYST _____

Soil & Silt

DATE June 27/69

PAGE No. 1

SAMPLE NO.	PPM IN SOIL OR SEDIMENT							
	Mo	Cu	Zn	Pb	Cd	Ag		
NIZ 1	2-	40	4000+	95	10+ ^(35.4)	1.73		() = approx value NSF = NOT SUFFICIENT
2	2-	40	2150	200	10+ ^(15.9)	2.12		
3	2-	50	300	33	.77	.26		
4	2-	28	2200	107	10+ ⁽²⁹⁾	2.87		
5	2-	135	97	25	.46	.1-		
6	4	108	100	36	.14	.31		
7	2	80	182	36	1.20	.35		
8	2	88	1460	130	10+ ^(14.3)	2.30		
9	2	1925	4000+	170	10+ ⁽²²⁾	2.08		
10	2-	70	1.8%	95	10+ ^(60.7)	2.80		
11	2-	105	730	170	.73	NSF		
12	2-	50	780	135	10+ ^(4.7)	3.85		
13	3	115	1175	307	6.75	5.30		
14	2-	40	780	53	8.45	70		
15	2-	75	2275	345	10+ ⁽²⁴⁵⁾	5.10		

SILT & SOILS FROM NIZ CREEK PROPERTY
 (SUBMITTED TO CANEX & NOOTKA)
 SEE MAP FOR LOCATIONS

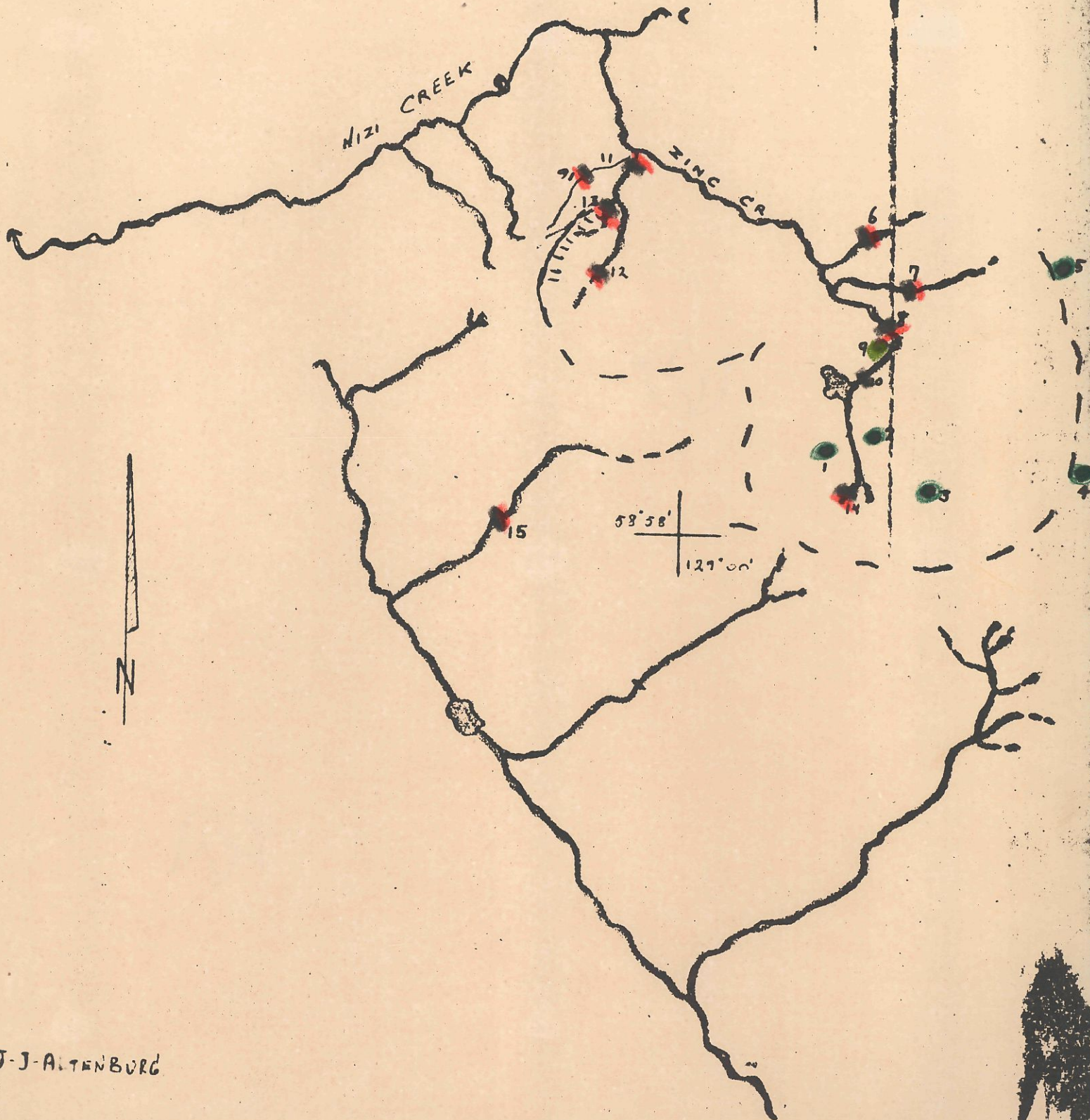
NIZI CREEK CLAIM GROUP

AIRPHOTO A-13111-282-66

SCALE: 1" = 300' (approx)

MAP: 1041

SOIL SAMPLES : ●
SILT SAMPLES : ○



J-J-ALTENBURG

SOIL & SILT MAP



PHONE: (604) 576-4111
TELEX: 04-50253
CABLE ADDRESS:
ELDRICO

Csrex Aerial Exploration Ltd.

700 Burrard Building

Vancouver, B.C.

Certificate of Assay

COAST ELDRIDGE

PROFESSIONAL SERVICES DIVISION
WARNOCK HERSEY INTERNATIONAL LIMITED
125 EAST 4TH AVE. VANCOUVER 10, B.C. CANADA

FILE NO. A.3-C.2-69-6789

DATE July 11, 1969

We Herby Certify that the following are the results of assays made by us upon submitted ORE samples

MARKED	GOLD		SILVER	Lead (Pb)	Tin (Sn)	Zinc (Zn)	Copper (Cu)	PER CENT	PER CENT
	OUNCES PER TON	VALUE PER TON	OUNCES PER TON	PER CENT	PER CENT	PER CENT	PER CENT		
6901	Trace	-	96.6	63.96	Trace	NOD Float			
6902	0.07	2.45	35.1	3.92		36.46	NO 2 SILVER-ZINC		
6903	0.04	1.40	1.8	1.21			0.55		
NO 3 COPPER									
						Property Nizi Creek Submitted by J. Forster			

6902 BOTH
6903 TRAY
Nizi
CLAIM # 19
IN PLACE

Gold calculated at \$ per ounce

Note. Rejects retained one week.
Pulps retained one month.
Pulps and rejects may be stored for a maximum of one year by special arrangement.

Unless it is specifically stated otherwise, gold and silver values reported on these sheets have not been adjusted to compensate for losses and gains inherent in the fire assay process.

Provincial Assayer

SILVER - No ①



PHONE: (604) 876-4111
TELEX: 04-50353
CABLE ADDRESS:
ELDRICO

Seaboard Explorations Company

84 - 615 West Hastings Street

Vancouver, B.C.

Certificate of Assay

WARNOCK HERSEY INTERNATIONAL LIMITED

COAST ELDRIDGE PROFESSIONAL SERVICES DIVISION

125 EAST 4TH AVE. VANCOUVER 10, B.C., CANADA

FILE NO. 461 - 11014

DATE March 18, 1970

We Hereby Certify that the following are the results of assays made by us upon submitted ORE samples

MARKED	GOLD		SILVER	Lead (Pb)	Zinc (Zn)	Cadmium	Antimony	Manganese	PER CENT
	OUNCES PER TON	VALUE PER TON	OUNCES PER TON	PER CENT	PER CENT	PER CENT (Cd)	PER CENT (Sb)	PER CENT (Mn)	
	0.02	\$ 0.70	40.6	3.51	14.64	0.10	0.54	1.78	

Niz:
CLAIM # 7
IN PLACE.


Note: Rejects retained one week.
Pulps retained one month.
Pulps and rejects may be stored for a maximum of one year by special arrangement.

Unless it is specifically stated otherwise, gold and silver values reported on these sheets have not been adjusted to compensate for losses and gain inherent in the fire assay process

Gold calculated at \$ _____ per ounce

H. Staples

Provincial Assayer

NO. 1 SILVER 

TO:

Canex Aerial Exploration Ltd.
 700 Burrard Building
 Vancouver, B.C.



Certificate of Assay
COAST ELDRIDGE
 PROFESSIONAL SERVICES DIVISION
 WARNOCK HERSEY INTERNATIONAL LIMITED
 125 EAST 4TH AVE. VANCOUVER 10, B.C., CANADA



PHONE: 122-1111
 TELEX: 0425
 CABLE: ASSAYERS
 Vancouver

FILE NO. A-3-C-2229-107

DATE July 15, 1963

We Hereby Certify that the following are the results of assays made by us upon submitted ORE

MARKED	GOLD		SILVER	Lead (Pb)	Zinc (Zn)	Cadmium (Cd)	PER CENT.	PER CENT.
	OUNCES PER TON	VALUE PER TON	OUNCES PER TON	PER CENT.	PER CENT.	PER CENT.		
3301	0.14	\$ 4.90	36.0	2.06	6.09	0.02		
						Property: Niaz Creek Submitted by D. A. Howard		

*Niaz
 CLAIM # 19
 "IN PLACE"*

Gold calculated at \$ _____ per ounce

Note. Rejects retained one week.
 Pulps retained one month.
 Pulps and rejects may be stored for a maximum of one year by special arrangement.

Unless it is specifically stated otherwise, gold and silver values reported on these sheets have

Howard

Provincial Assayer

No 2 Silver-Zinc



PHONE: (604) 876-4111
TELEX: 04-50353
CABLE ADDRESS
ELDRICO

Seaboard Explorations Ltd.,

Certificate of Assay

85 - 615 West Hastings Street

WARNOCK HERSEY INTERNATIONAL LIMITED

Vancouver, B.C.

COAST ELDRIDGE PROFESSIONAL SERVICES DIVISION

FILE NO. 461 - 10609

125 EAST 4TH AVE. VANCOUVER 10, B.C., CANADA

DATE February 26, 1970

We Herby Certify that the following are the results of assays made by us upon submitted 021 samples

MARKED	GOLD		SILVER	Lead-(Pb) CENT.	Zinc-(Zn) CENT.	Cadmium (Cd) CENT.	PER CENT.	PER CENT.	PER CENT.
	OUNCES PER TON	VALUE PER TON	OUNCES PER TON						
	0.02	\$ 0.70	40.5	0.24	44.70	0.36			

*NIZ:
CLAIM # 7
IN PLACE*

Note. Rejects retained one week.
Pulps retained one month.
Pulps and rejects may be stored for a maximum
of one year by special arrangement.

Unless it is specifically stated otherwise, gold
and silver values reported on these sheets have
not been adjusted to compensate for losses and
gain inherent in the fire assay process.

Gold calculated at \$ per ounce

Provincial Assayer

To: **N^o (3) COPPER**



PHONE: (604) 876-4111
 TELEX: 04-50353
 CABLE ADDRESS
 ELDRICO

Seaboard Explorations Ltd.,
 84 - 615 West Hastings Street
 Vancouver, B.C.

Certificate of Assay

WARNOCK HERSEY INTERNATIONAL LIMITED
 COAST ELDRIDGE PROFESSIONAL SERVICES DIVISION
 125 EAST 4TH AVE. VANCOUVER 10, B.C., CANADA

FILE NO. **460-A-10317**

DATE **January 22, 1970**

We Hereby Certify that the following are the results of assays made by us upon submitted ORE samples

MARKED	GOLD		SILVER	Copper (Cu) CENT.	Total Molybdenum (Mo) CENT.	PER CENT	PER CENT	PER CENT	PER CENT
	OUNCES PER TON	VALUE PER TON	OUNCES PER TON						
		0.01	\$ 0.35						

Niz:
CLAIM # 19
"IN PLACE."

Note: Rejects retained one week
 Pulps retained one month.
 Pulps and rejects may be stored for a maximum
 of one year by special arrangement.

Gold calculated at \$ _____ per ounce

H. Hayes

Provincial Assayer