

Conrad Provencher Property,  
Hottah Lake

File: 104-I-7

MEMO

This submission was made by Provencher in early July, 1970. It does not really seem likely that he has anything to offer, as Falconbridge and he has undoubtedly approached them to examine it.

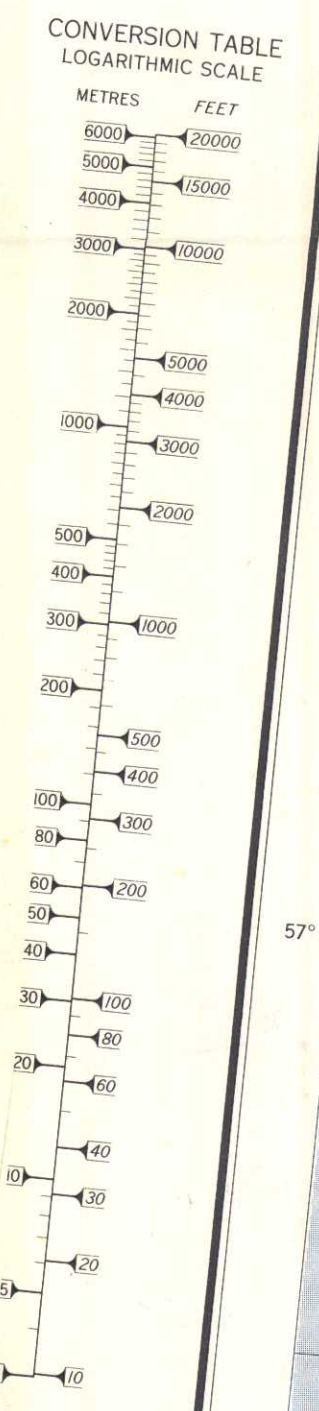
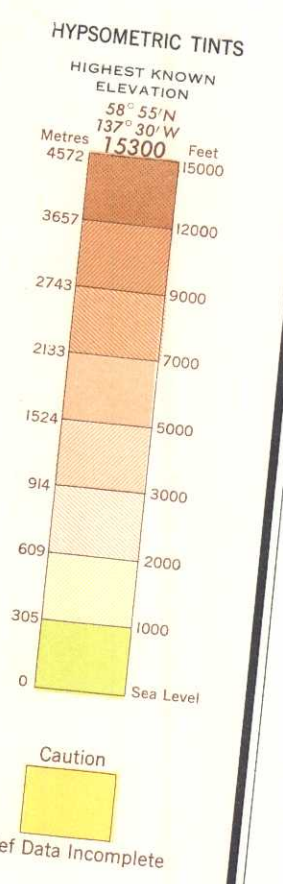
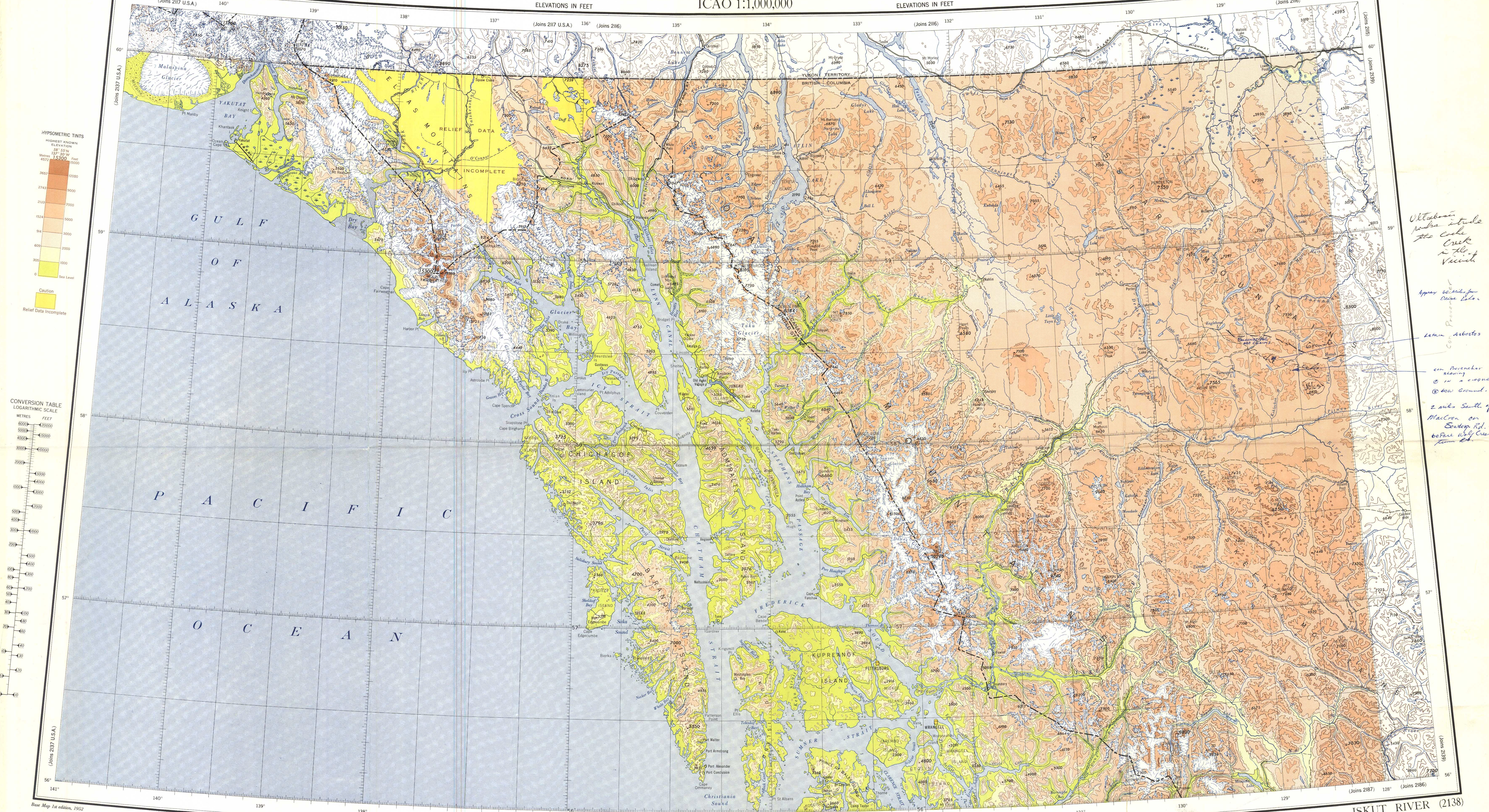
I don't think it is worth our while to examine the occurrence at present.

M.E. (Tim) Coates

ELEVATIONS IN FEET  
(2138) ISKUT RIVER

# WORLD AERONAUTICAL CHART ICAO 1:1,000,000

ELEVATIONS IN FEET  
Lambert Conformal Conic Projection  
Standard Parallels 56° 40' and 59° 20'



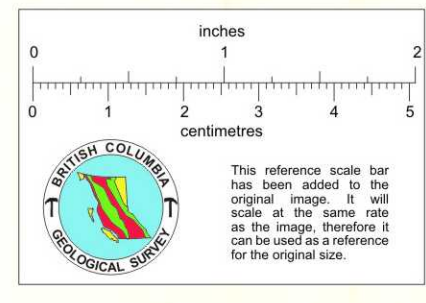
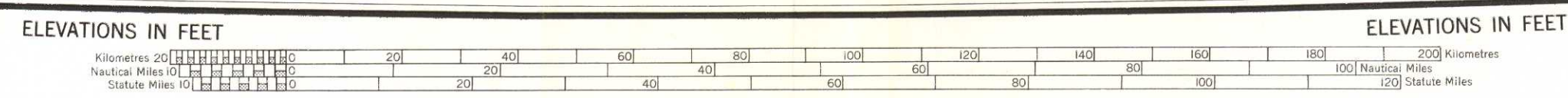
*Uttuboni  
Naba at the  
the Creek  
in the  
Vicinity*

*Upper section of  
River etc.*

*Letim Asbestos*

*on Riverbank  
showing  
a low ground  
2 miles south of  
MacKen on  
Seward Rd.  
before the Creek  
turns E.*

- REFERENCE**
- Boundary - International
  - Boundary - Provincial
  - Railway (single track)
  - Primary Road
  - Secondary Road
  - Trail
  - Contour
  - Contoural Contour
  - Shoals and Sand Bars
  - Mud and Tidal Flats
  - Glacier
  - Swamp
  - Residual Stream
  - Cliff
  - City or Large Town
  - Town or Village
  - Mine
  - Spot Elevation (in feet)

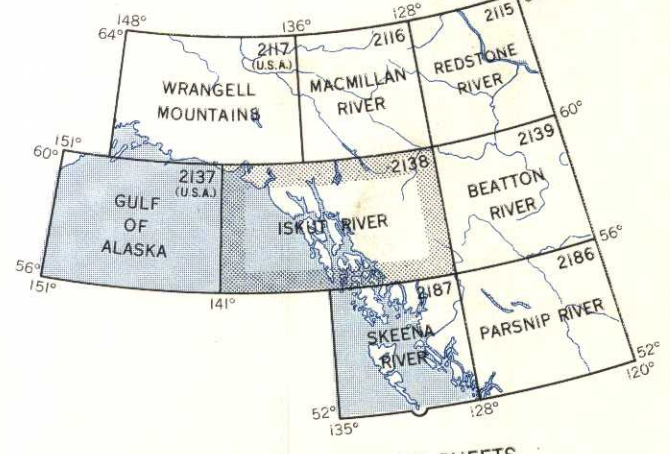


Price 25 cents

Produced by the Survey and Mapping Branch,  
Department of Mines and Technical Surveys,  
OTTAWA, CANADA.

ELEVATIONS IN FEET  
Copies may be obtained from the Map Distribution Office,  
Department of Mines and Technical Surveys, Ottawa.

**ISKUT RIVER (2138)**  
CANADA - UNITED STATES



812274

N.T.S. Nos. 104 and 114 E 1/2

INDEX TO ADJACENT SHEETS