

# J. R. WILLIAMS & SON LTD.

PROVINCIAL ASSAYERS AND CHEMISTS

Office and Laboratory:

580 Nelson Street, Vancouver 2, B. C.

**I Hereby Certify** that the following are the results of assays made by me upon samples of ORE  
 herein described and received from MR. D. TULLY. April 11th 19 67

MARKED	GOLD		SILVER		Copper				GROSS TOTAL VALUE (2000 lbs.) Per Ton
	Ounces Per Ton	Value Per Ton	Ounces Per Ton	Value Per Ton	Per Cent.	Value Per Ton	Per Cent.	Value Per Ton	
		\$		\$		\$		\$	\$
4185					0.14				
4186					0.20				
4187					0.53				
4188					0.26				
4189					0.22				

812230

Gold calculated at \$ \_\_\_\_\_ per ounce.

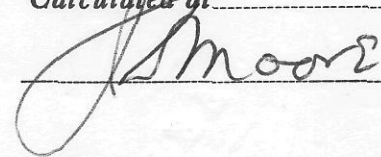
Silver calculated at \_\_\_\_\_ cents per ounce.

Calculated at \_\_\_\_\_ cents per lb.

Calculated at \_\_\_\_\_ cents per lb.

Calculated at \_\_\_\_\_ cents per lb.

NOTE—Pulps of Samples retained 2 months from date of Receipt.  
 Rejects 1 week unless otherwise instructed.



Provincial Assayer.

PHONE: 685-5821

File #301197/201

CERTIFICATE OF ASSAY

4-3-68 *Jmh*

J. R. WILLIAMS & SON LTD.

PROVINCIAL ASSAYERS AND CHEMISTS

Office and Laboratory:

580 Nelson Street, Vancouver 2, B. C.

*File - San Jacinto Ex.*

**I Hereby Certify** that the following are the results of assays made by me upon samples of ORE herein described and received from Messrs. Cyprus Explorations Ltd. February 27 1968

MARKED	GOLD		SILVER		Copper		Mo		GROSS TOTAL VALUE (2000 lbs.) Per Ton
	Ounces Per Ton	Value Per Ton	Ounces Per Ton	Value Per Ton	Per Cent.	Value Per Ton	Per Cent.	Value Per Ton	
Y 251) GREYHOUND Trace MINE (GRAB)		\$	Trace	\$	0.10				\$
Y 252) GRAB					0.80		Nil		
Y 253) OSOYOS - MULTIPLE MINING GRAB					0.10		Trace		
Y 254) GRAB					0.08		Trace		
Y 255) GRAB					Trace		Nil		

CYPRUS EXPLORATION CORP. LTD. VANCOUVER, B.C.	
TO <i>DWT</i>	REPLY
RETURN TO	COMMENT
4-3-68	
1	5
2	6
3	7
4	8

Gold calculated at \$ \_\_\_\_\_ per ounce.  
Silver calculated at \_\_\_\_\_ cents per ounce.

Calculated at \_\_\_\_\_ cents per lb.  
Calculated at \_\_\_\_\_ cents per lb.  
Calculated at \_\_\_\_\_ cents per lb.

NOTE—Pulps of Samples retained 2 months from date of Receipt.  
Rejects 1 week unless otherwise instructed.

*J. Moore*  
Provincial Assayer.

PHONE: 685-5821

CERTIFICATE OF ASSAY

File #288728/732

J. R. WILLIAMS & SON LTD.

PROVINCIAL ASSAYERS AND CHEMISTS

Office and Laboratory:

580 Nelson Street, Vancouver 2, B. C.

I Hereby Certify that the following are the results of assays made by me upon samples of ORE herein described and received from M. R. D. TULLY April 12th 19 67.

Table with columns: MARKED, GOLD (Ounces Per Ton, Value Per Ton), SILVER (Ounces Per Ton, Value Per Ton), Mo (Per Cent., Value Per Ton), and GROSS TOTAL VALUE (2000 lbs. Per Ton). Rows 4185-4189. Includes handwritten signature 'H. H. STEWART - Bückhorn'.

Gold calculated at \$ per ounce.

Silver calculated at cents per ounce.

NOTE—Pulps of Samples retained 2 months from date of Receipt. Rejects 1 week unless otherwise instructed.

Calculated at cents per lb.

Calculated at cents per lb.

Calculated at cents per lb.

Signature of Provincial Assayer.

CERTIFICATE OF ASSAY

File #288369/373

J. R. WILLIAMS & SON LTD.

PROVINCIAL ASSAYERS AND CHEMISTS

Office and Laboratory:

580 Nelson Street, Vancouver 2, B. C.

I **Hereby Certify** that the following are the results of assays made by me upon samples of ORE  
 herein described and received from M. R. D. TULLY. April 11th 19 67

MARKED	GOLD		SILVER		Copper				GROSS TOTAL VALUE (2000 lbs.) Per Ton
	Ounces Per Ton	Value Per Ton	Ounces Per Ton	Value Per Ton	Per Cent.	Value Per Ton	Per Cent.	Value Per Ton	
		\$		\$		\$		\$	\$
4185					0.14				
4186					0.20				
4187					0.53				
4188					0.26				
4189					0.22				

*H. H. SHERR - Buckhorn*

Gold calculated at \$.....per ounce.

Silver calculated at.....cents per ounce.

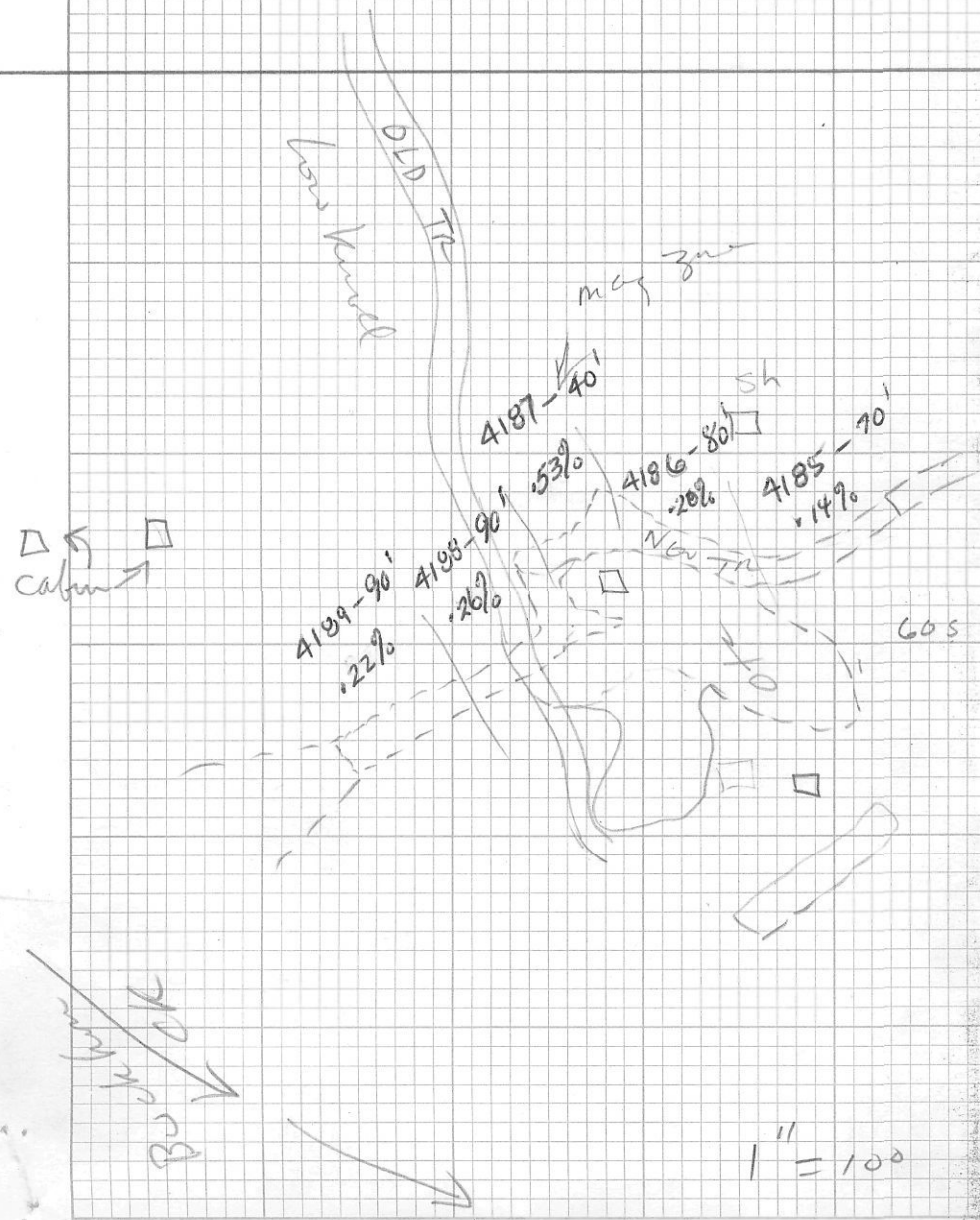
Calculated at.....cents per lb.

Calculated at.....cents per lb.

Calculated at.....cents per lb.

NOTE—Pulps of Samples retained 2 months from date of Receipt.  
 Rejects 1 week unless otherwise instructed.

*J. Moore* Provincial Assayer.



do not  
control Machine

- Buchan 1107
- Morree FR 1109
- Little Ruth 8915-11227
- TINTIC lit 146M
- Red Metal FR 15685-11226
- XLCK 15665
- Jim McRae FR No 1
- ✓ — — No 2
- ✓ — — No 1
- ✓ — — No 2
- ✓ — — No 3
- ✓ — — FR 1
- ✓ — — 2

- Sydney M. Johnson 1961
- Ah there 1960
- Pluto 2393
- Hordsonville FR
- Peacock 1243-11122
- Ragmapack FR
- C.G. Butte City 1230
- C.G. Toronto FR 1013-11189
- FRANCIE FR

1" = 100'



MOTHER  
LOOSE

CUSTOMERS NAME

RESOURCES

SUNSET

1014

1014

16

20

24

28

32

36

40

44

48

52

56

60

64

68

72

76

80

GEM

Silver Dome Crown Block  
(Utah Construction)

1107

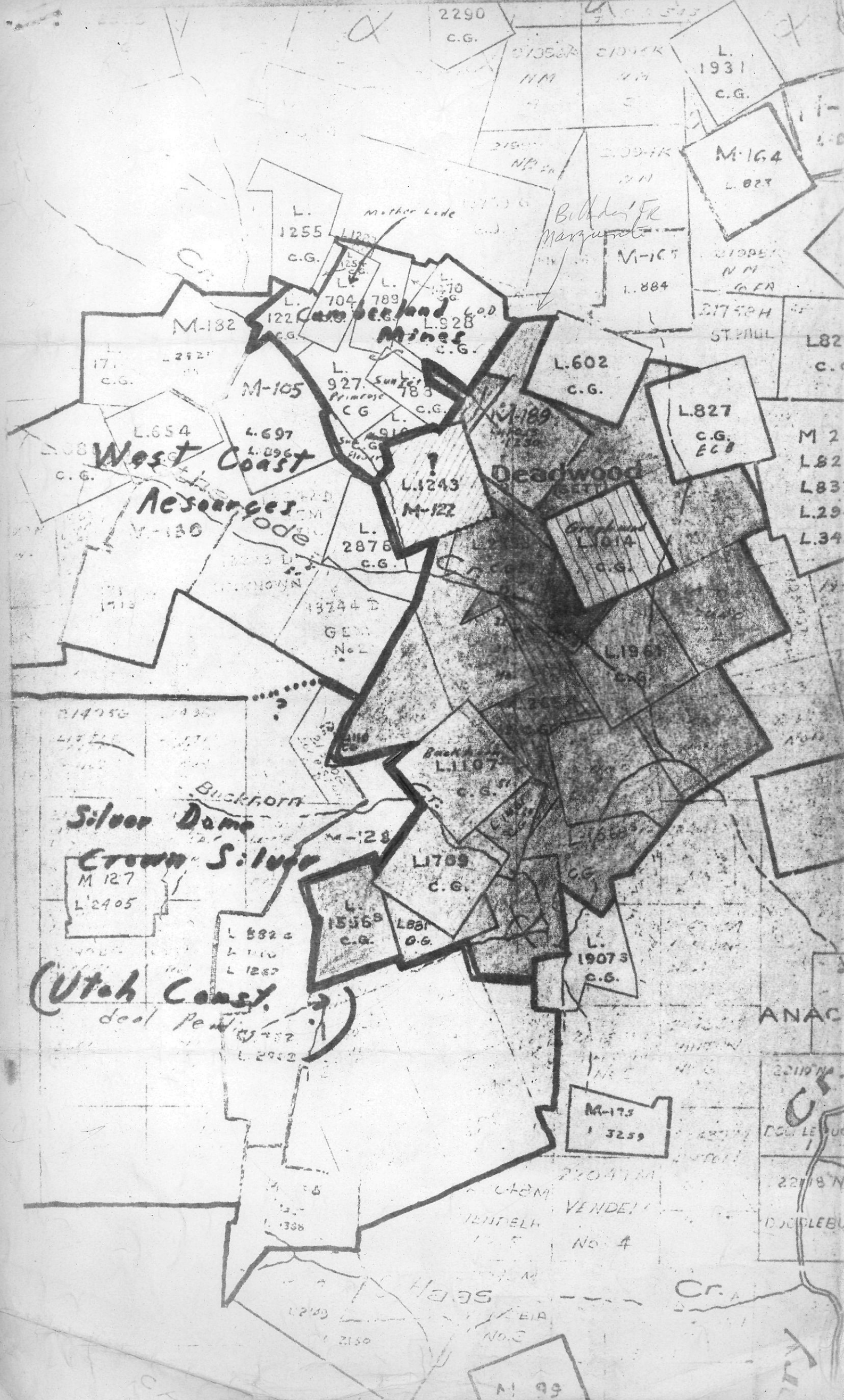
1769

1556

1831

80

SAN JACINTO EXPLORATIONS LTD. (N.P.L.)  
Owensboro Property - Owensboro, O.K.  
REPORT ON GEOPHYSICAL INTERPRETATION  
AND  
FRACTURE DENSITY STUDY



2290  
C.G.

L. 1931  
C.G.

M-164  
L. 827

L. 1255  
C.G.

Mother Lode

Bullhead Fr  
Marquette

M-165  
L. 884

M-182  
L. 122  
C.G.

Carroll's Land  
Mines  
L. 704  
L. 789  
L. 928  
C.G.

M-105  
L. 927  
C.G.

L. 602  
C.G.

L. 827  
C.G.  
ECB

West Coast  
L. 654  
L. 697  
L. 896  
C.G.

Deadwood  
L. 1243  
M-122

Reservoir  
V-130

L. 2876  
C.G.

L. 1914  
C.G.

Buckhorn

Silver Dome

Crown Silver

M 127  
L 2405

L 1759  
C.G.

L. 1556  
C.G.

L. 881  
C.G.

L. 19073  
C.G.

Utah Const.

deal pending

M-175  
L 3259

Haas

M 99

SAN JACINTO

CORE	NO	LOC	LOC	SECTION	CORE	NO	LOC	LOC	SECTION
INCOMPLETE	S <sub>1</sub> -543	✓	GREYHOUND	INCOMPLETE FOR THIS GROUP	X	B 14	X	GREYHOUND	X
✓	544	✓	HOLES NOT ON MAP	✓	X	B 15	X	"	X
✓	545-569	✓	GREYHOUND	X	X	B 16	X	"	✓
✓	570+	✓	NOT SHOWN ON MAP	X					
✓	571	X	"	X					
✓	572-575	✓	"	X					
✓	576-577	X	"	X					
✓	578-582	✓	"	X					
X	A 15	X	GREYHOUND	X					
X	A 16	X	"	X					
X	A 17	X	"	✓					
X	A 18	X	"	X					
X	A 19	X	"	X					
X	A 20	X	"	↑					
X	A 21	X	"	↑					
X	A 22	X	"	X					
X	A 23	X	"	✓					
X	A 24	X	"	↑					
X	A 25	X	"	X					
X	A 26	X	"	X					
X	A 27	X	"	X					
X	A 33	✓	PERCOK	X					
X	A 33 A	✓	PERCOK	X					
X	A 34	✓	PERCOK	X					
X	V 2	X	GREYHOUND	X					
X	V 3	X	"	X					
X	V 4	X	"	X					
X	V 5	✓	HOLES NOT SHOWN	X					
X	V 6	✓	"	X					
X	B 6		GREYHOUND	✓					
X	B 7		"	✓					
X	B 9	X	GREYHOUND	X					
X	B 10	X	"	✓					
X	B 11	X	"	X					
X	B 12	X	"	✓					
X	B 13	X	"	X					