

FILE COPY

Prop. Submission

812182

SAMPLING REPORT

INEZ CLAIMS

N.T.S. 82-E-5 W

By: A. A. Walker
Hudson Bay Exploration and Development Company Limited

PROPERTY SUBMITTAL
C. I. Brett

9. 1000
1. 1000

map

SAMPLING REPORT

by A. A. Walker

Hudson Bay Exploration and Development Company Limited

INEZ GROUP CLAIMS

OLALLA, B.C.

OSOYOOS MINING DISTRICT
Lat. 49°18' Long 119° 49'

Owner - C. I. Brett, Kelowna, B.C.

July 4, 1979

Introduction

On June 4th 1979, A.A. Walker and E. W. Yarrow of Hudson Bay Exploration and Development Co. Ltd. conducted an examination of Mr. C. I. Brett's claim group situated near Olalla, B.C. In the course of examination of the property considerable time was spent in sampling the numerous trenches and showings. This is a report on that sampling together with a statement of expenditures which is hereby submitted for assessment purposes.

Location and Access

The property is located just east of provincial highway 3 between Keremeos and Penticton about 4 kilometres north of Olalla. The showings are on a bench on a steep mountainside high above the road at an elevation of about 760 metres above sea level. Access to the showings is by gravel road east from the highway for about 1 kilometre and then by foot trail for about another kilometre up the mountainside.

Claims (see attached claim map)

Mr. Brett hold 4 claims, Inez 1 and 2 and Gwen 3 and 4. The claim block is truncated to the north by Indian Reserve No. 12 and is surrounded to the south and east by other claims.

Geology (see Plate 1.)

Regionally, the property lies within the Intermontane Tectonic belt near its eastern margin, adjacent to the Omineca crystalline belt. Locally, a stock of quartz monzonite intrudes the Triassic (?) Old Tom and Shoemaker Formations. This stock is probably an offshoot of the Okanagan batholith.

Lenses of skarn occur at the contact of the quartz monzonite with the Shoemaker Formation. The skarn zones appear to lie within a quartzite member of the Shoemaker Formation and are restricted to embayments within the intrusive. No limestone or limy quartzite was observed on the property although it is probable that the skarn zones represent an alteration of lenses of such material.

Molybdo-scheelite, with minor molybdenite, chalcopyrite and pyrrhotite, occurs within the skarn zones.

Sampling (see Plate 1.)

Sampling was aimed at determining an average grade for the tungsten bearing skarns as well as indicating the potential of the country rocks for tungsten, molybdenum and precious metals. Most of the sampling was conducted in and adjacent to the existing trenches and consisted of continuous chip sampling with minor grab sampling. Sample locations are shown on Plate 1 and the following is a tabulation of sample results.

Sample No.	Method	Width	Description	Results			
				Mo%	W ₃ %	Ag (opt)	Au (opt)
22303	Chip	1.5 metres	Quartzite	0.001	0.01	-	-
22304	Chip	1.5 "	Skarn	0.008	0.21	-	-
22305	Chip	1.5 "	Skarn	0.009	0.41	-	-
22306	Chip	1.0 "	Quartz vein	0.019	0.02	0.03	0.001
22307	Chip	3.0 "	Skarn	0.031	0.66	-	0.002
22308	Chip	2.0 "	Skarn	0.006	0.22	-	-
22309	Chip	2.0 "	Skarn	0.012	0.28	-	-
22310	Chip	5.0 "	Quartz Monzonite	0.001	0.02	-	0.01
22311	Chip	0.8 "	Shear Zone	0.019	0.25	-	-
22313	Chip	3.0 "	Skarn	0.002	0.07	-	-

In addition the following three samples were collected for rock geochemistry:

Sample No.	Method	Description	Results (in ppm)			
			W	Mo	Au	Ag
22301	Grab	Volcanics	0	2	0.040	0.5
22302	Grab	Quartzite	2	8	0.005	-
22312	Grab	Volcanics	0	2	0.010	-

A. A. Walker

A. A. Walker
Sr. Geologist

Hudson Bay Exploration and Development Co. Ltd.
440-1055 West Hasting St.
Vancouver, B.C. V6E 2E9

STATEMENT OF EXPENDITURES

Geologist's Time - 1 Man Day	\$ 300.00
Assay Costs (see attached statement)	<u>179.90</u>
Total	\$ 479.90

A. A. Walker

A. A. Walker
4th July, 1979

A. ALASTAIR WALKER

Born at Wigtown, Scotland - 1940

Graduated from University of Glasgow in 1963 with B.Sc Honours in Geology.

- 1963 - 1966 - Employed by Seismograph Service Ltd. of London, England in oil exploration conducting gravity and seismic surveys in England, Nigeria, Middle East and the Netherlands.
- 1966 - 1974 - Employed by Anglo American Corporation at the Nchanga Mine on the Zambian Copperbelt. Performed mine geology duties both underground and in the open pits. Held the position of Assistant Chief Geologist (Open Pits) for final three years.
- 1974 - 1976 - Employed by Hudson Bay Mining and Smelting's associate, Compania Cuprifera La Verde as project geologist on the La Verde copper porphyry prospect in Michoacan State, Mexico. Involved in drilling, ore reserve estimation and open pit feasibility studies.
- 1976 - 1979 - Employed as senior geologist in the Vancouver Office of Hudson Bay Exploration and Development Co. Involved in exploration projects in British Columbia and Yukon Territory.

ACME ANALYTICAL LABORATORIES LTD.

PHONE: 253-3158

6455 LAUREL STREET, BURNABY, B.C. V5B 3B4

PHONE: 299-5242

852 East Hastings St., Vancouver, B.C. V6A 1R5

June 8, 1979

File 0156

Hudson Bay Exploration & Development Co. Ltd.
 1695 - 555 Burrard St.
 Vancouver, B.C.
 V7X 1G6

TERMS:
 NET TWO WEEKS INTEREST AT
 1 1/2% PER MONTH CHARGED ON
 OVERDUE ACCOUNTS.

NUMBER	ASSAY	PRICE	AMOUNT
1	Geochem Cu assay with rock preparation @	\$ 2.80	\$ 2.80
3	Geochem Mo, Au & W assays with rock preparation @	8.80	26.40
1	Additional geochem Ag assay @	.50	.50
10	Mo% & WO ₃ % Assays @	14.00	140.00
1	Additional Ag Assay @	3.25	3.25
3	Additional Au Assays @	3.25	9.75
			\$ 182.70
<i>Deduct</i>			<i>2.80</i>
<i>(not B.H.'s property)</i>			<i>179.90</i>
SHIPPING CHARGES:			
<i>7038-04</i>			



ACME ANALYTICAL LABORATORIES LTD.

Assaying & Trace Analysis

852 E. Hastings St., Vancouver, B. C. V6A 1R6

Telephone: 253 - 3158

To:

Hudson Bay Exploration & Development Co. Ltd.
1695 - 555 Burrard St.
Vancouver, B. C.
V7X 1G6

File No. 0156

Type of Samples Rock

Disposition _____

ASSAY CERTIFICATE

No.	Sample	Mo%	WO ₃ %	Ag oz/ton	Au oz/ton			No.
1	22303	.001	.01					1
2	22304	.008	.21					2
3	22305	.009	.41					3
4	22306	.019	.02	.03	.001			4
5	22307	.031	.66		.002			5
6	22308	.006	.22					6
7	22309	.012	.28					7
8	22310	.001	.02		.01			8
9	22311	.019	.25					9
10	22312 ³	.002	.07					10
11								11
12								12
13								13
14								14
15								15
16								16
17								17
18								18
19								19
20								20

All reports are the confidential property of clients.

DATE SAMPLES RECEIVED June 6, 1979

DATE REPORTS MAILED June 8, 1979

ASSAYER *[Signature]*

DEAN TOYE, B.Sc.
CHIEF CHEMIST
CERTIFIED B.C. ASSAYER

7



ACME ANALYTICAL LABORATORIES LTD.

Assaying & Trace Analysis

852 E. Hastings St., Vancouver, B. C. V6A 1R6

phone: 253 - 3158

To:
Hudson Bay Exploration &
Development Co. Ltd.
1695 - 555 Burrard St.
Vancouver, B.C.
V7X 1G6

File No. 0156

Type of Samples Rock

Disposition

GEOCHEMICAL ASSAY CERTIFICATE

SAMPLE No.	Mo	Ag	Au	W	Cu						
22301	2	.5	.040	0							1
22302	8		.005	2							2
22312	2		.010	0							3
											4
											5
											6
											7
											8
											9
											10
											11
											12
											13
											14
											15
											16
											17
											18
											19
											20
											21
											22
											23
											24
											25
											26
											27
											28
											29
											30
											31
											32
											33
											34
											35
											36
											37
											38
											39
											40

All reports are the confidential property of clients
All results are in PPM.

DIGESTION:.....

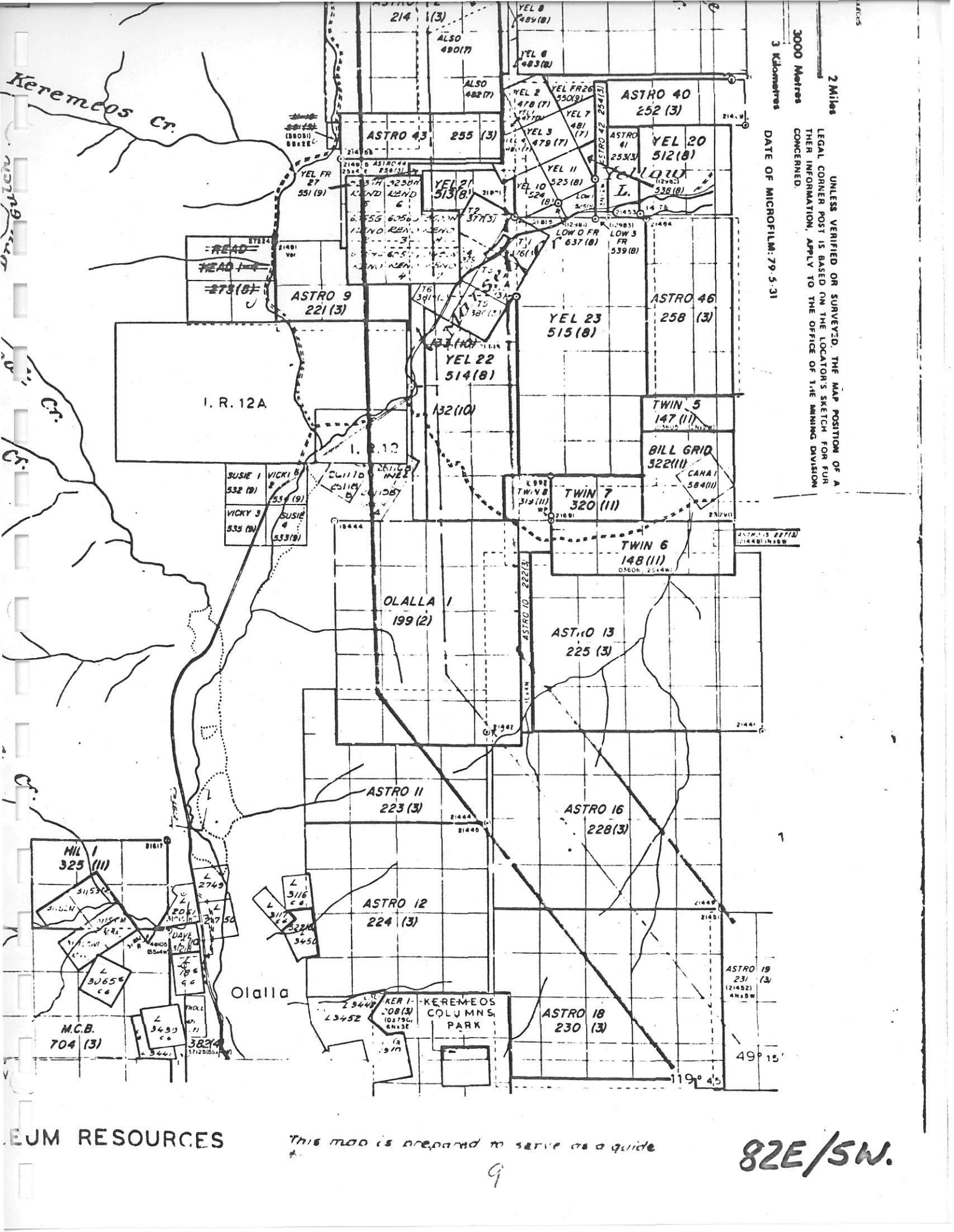
DETERMINATION:.....

DATE SAMPLES RECEIVED June 6, 1979

DATE REPORTS MAILED June 8, 1979

ASSAYER *Dean Toy*

DEAN TOYE, B.Sc.
CHIEF CHEMIST
CERTIFIED B.C. ASSAYER



2 Miles
3 Kilometres
UNLESS VERIFIED OR SURVEYED, THE MAP POSITION OF A LEGAL CORNER POST IS BASED ON THE LOCATOR'S SKETCH FOR FURTHER INFORMATION, APPLY TO THE OFFICE OF THE MINING DIVISION CONCERNED.
DATE OF MICROFILM: 79-5-31

EUM RESOURCES

This map is prepared to serve as a guide

82E/SW.

9



SYMBOLS

- Oxidized Area
- Rock Type Determination
- ▭ Trench
- ▭ Shaft
- Claim Post
- Survey Station
- A Chip Sample
- Outcrop
- ▭ Dump
- ▭ Geological Contact (Defined, approx., assumed)
- ▭ Strike and Dip of Layered Rocks
- ▭ Strike and Dip of Joints (Inclined, vertical)
- ▭ Fault
- ▭ Aplite Dyke
- 22301 Sample Location and Number

LEGEND

- Ub Ultrabasic Dyke
- Skarn
- Quartz Monzonite
- 4 Granodiorite (Not shown - same as 5)
- 3 South Volcanics
- Quartzite
- North Volcanics

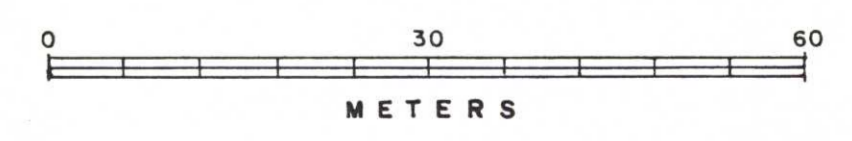
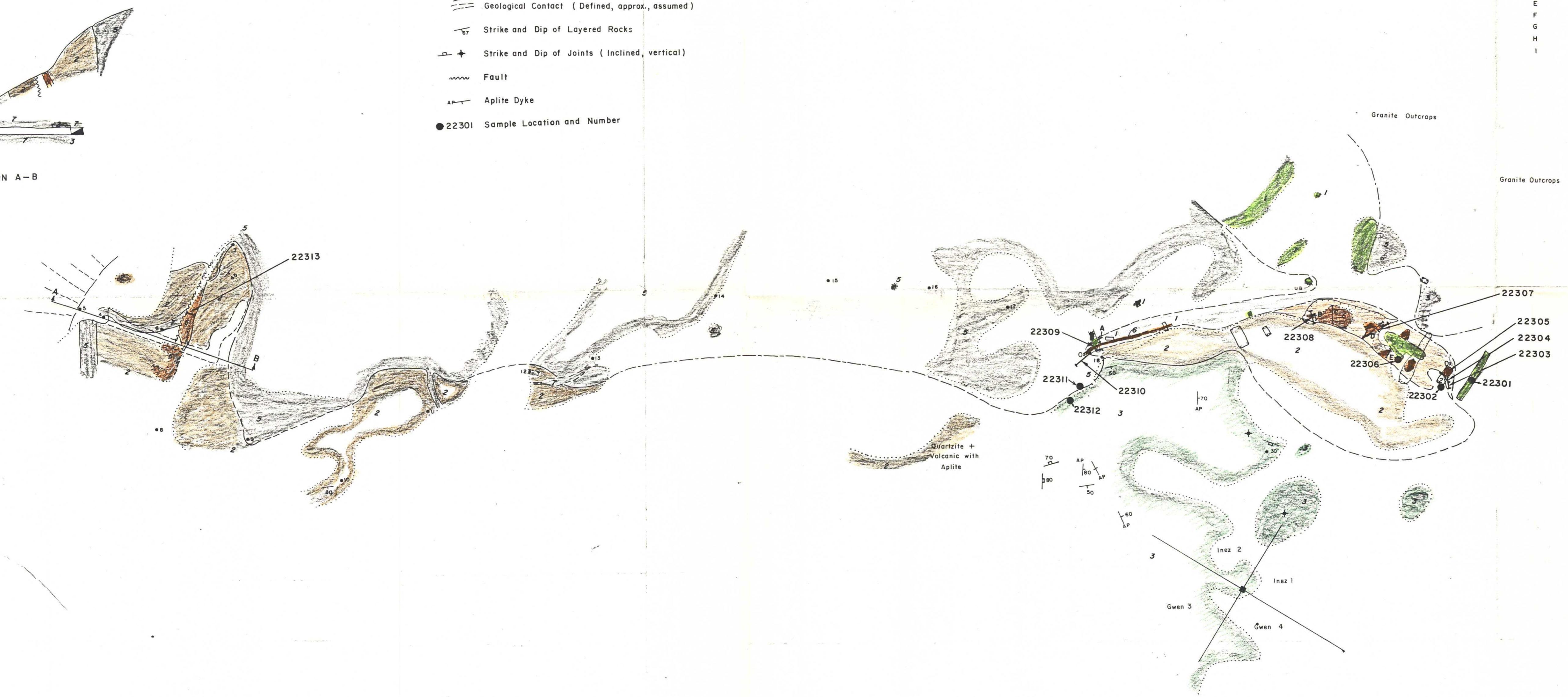
705.4 meters Elev.

SECTION A-B

South Boundary Indian Reserve

From Union Carbide Exploration (1973)

Chip Sample	WO	Cu	MoS ₂
A	0.20	0.06	0.016
B	.46	.24	.014
C	.24	.06	.036
D	.34	.02	.031
E	.17	.02	.011
F	—	—	—
G	.26	.11	.017
H	.25	.02	.024
I	.70	.05	.019



HUDSON BAY EXPLORATION & DEVELOPMENT CO. LTD.
VANCOUVER, B. C.

INEZ GROUP
(C. I. BRETT)
GEOLOGY & ASSAYS
OLALLA, OSOYOOS M.D., B. C.

Traced by: C.G.U. Date: July 4, 1979

PLATE I **SCALE 1:600**

This reference scale bar has been added to the original map. It will not be used as a reference for the original map.

Charles I. Brett
440 R. R. 4, Okaview Road
Kelowna, B. C. V1Y 7R3