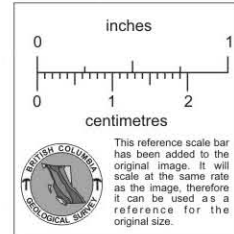
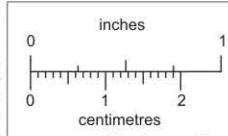
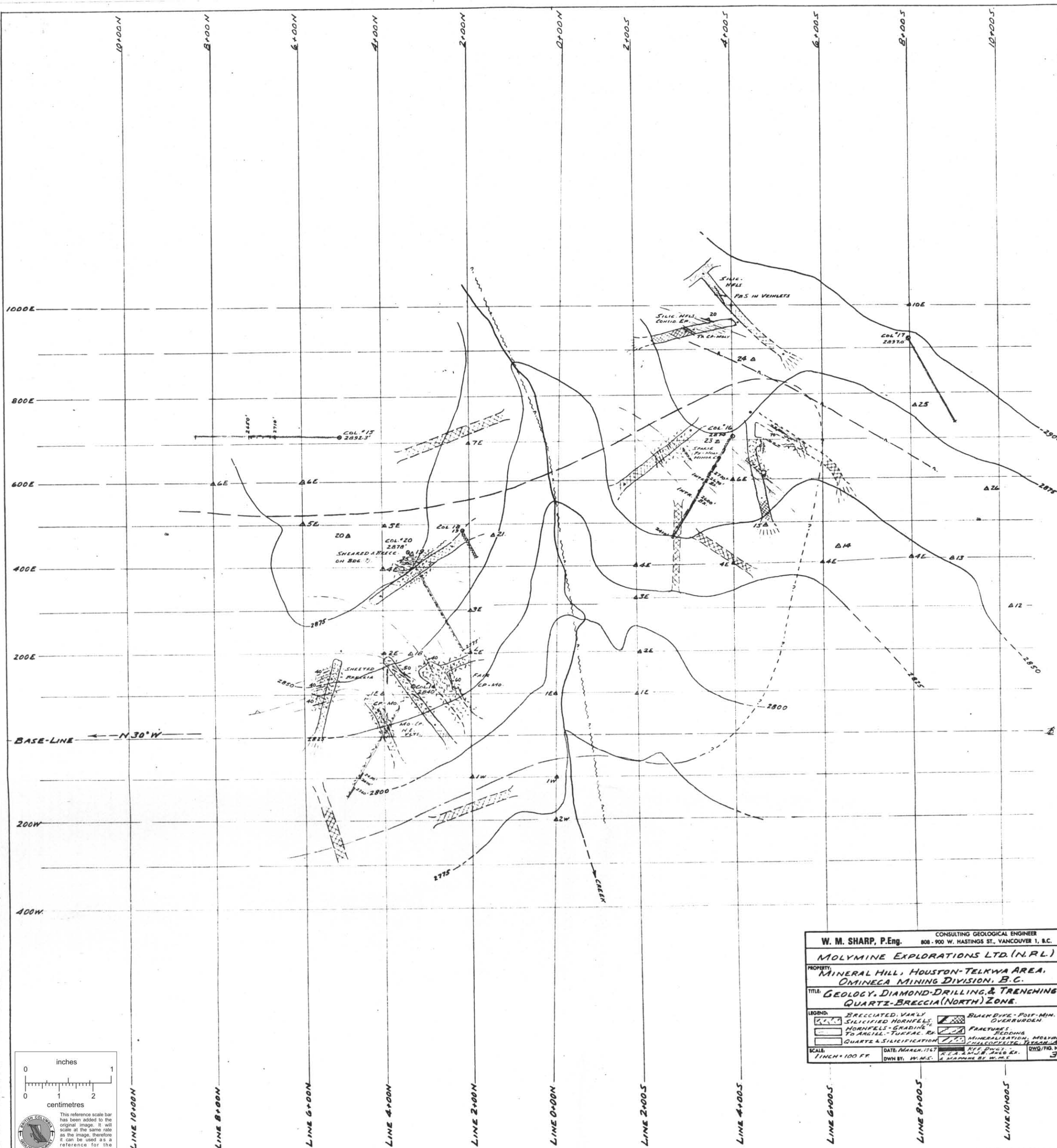


MOLYBDENE EXPLORATIONS LTD (NPL)
 MICROWAVE HILL PROJECT
 SOIL SURVEY PPM-ZN

Scale 1" = 200'



0-199	ppm Zn, T.S.G.
200-499	"
500-999	"
1000-1499	"
1500-1999	"
> 2000	"
Z	Heavy Metal Results - (On Field Technique?)
- - -	SCHEDULED TRENCHING



This reference scale bar has been added to the original image. It will scale at the same rate as the image, therefore it can be used as a reference for the original size.

W. M. SHARP, P.Eng. CONSULTING GEOLOGICAL ENGINEER
 808 - 900 W. HASTINGS ST., VANCOUVER 1, B.C.
MOLYBDENE EXPLORATIONS LTD. (N.R.L.)
 PROPERTY: MINERAL HILL, HOUSTON-TELKWA AREA,
 Omineca Mining Division, B.C.
 TITLE: GEOLOGY, DIAMOND-DRILLING & TRENCHING
 QUARTZ-BRECCIA (NORTH) ZONE.

LEGEND:
 BRECCIATED, VAR'LY SILICIFIED HORNFELS
 HORNFELS - GRABING TO ARGILL. TUFFAC. EX.
 QUARTZ & SILICIFICATION
 BLACK DYKE - POST-MIN. OVERRIDEN
 FRACTURES
 BEDDING
 MINERALISATION, MOLYBD. CHALCOPYRITE, TRACONITE

SCALE: 1 INCH = 100 FT. DATE: MARCH, 1967
 DWN BY: W.M.S. R.C.A. & L.L.B. S.H.C. K.F. R.M.G./P.D. No. 3

W X Y Z C F I L O R U

HUBER No. 3.

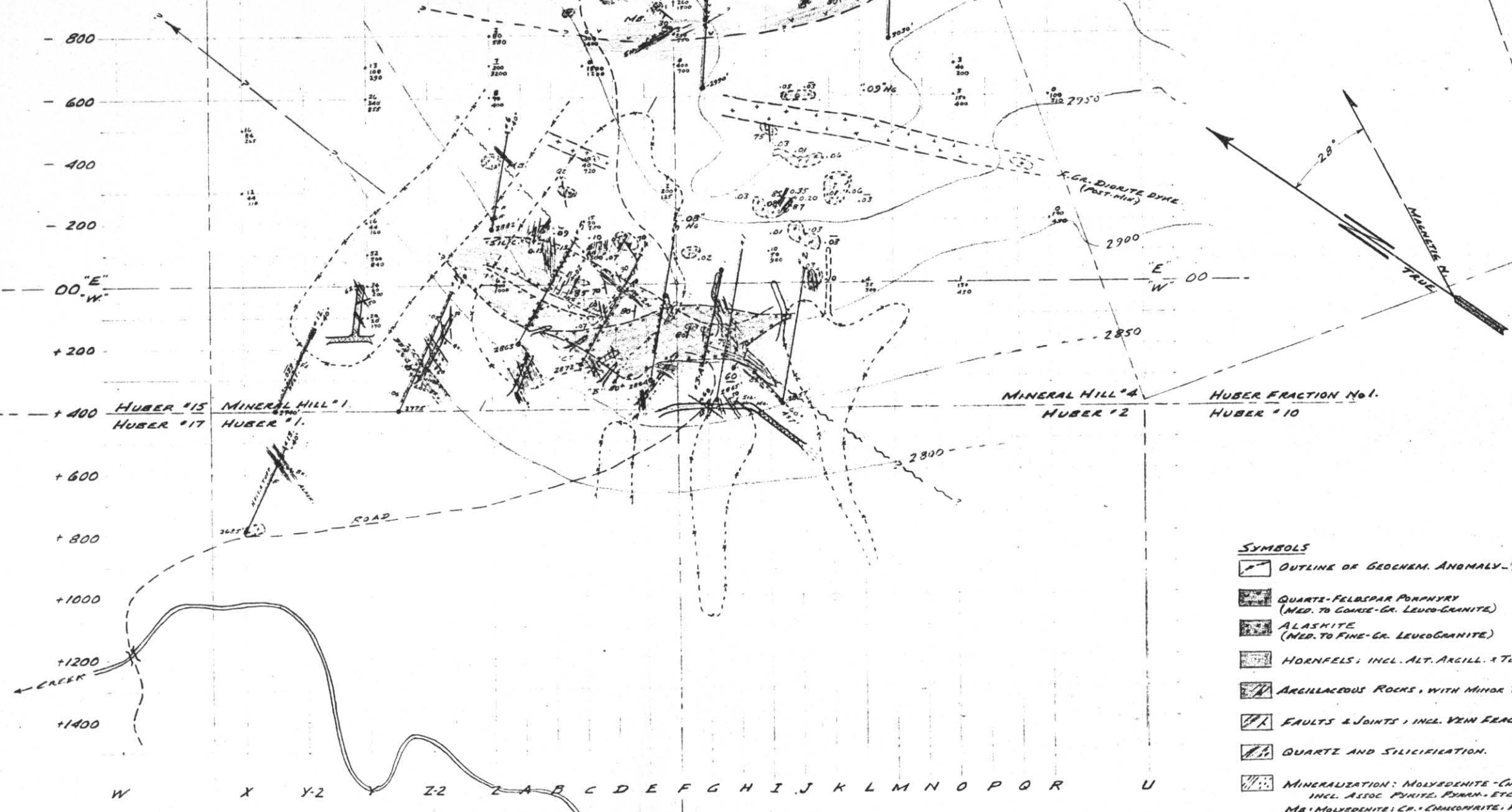
-3400
-3200
-3000
-2800
-2600
-2400
-2200
-2000
-1800
-1600
-1400
-1200
-1000
-800
-600
-400
-200
00 "E"
"W"
+200
+400
+600
+800
+1000
+1200
+1400

HUBER #11 HUBER #4
HUBER #13 MINERAL HILL #2

HUBER #15 MINERAL HILL #1
HUBER #17 HUBER #1

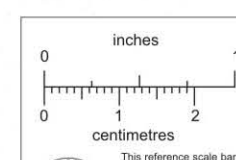
MINERAL HILL #8
MINERAL HILL #7

MINERAL HILL #4
HUBER #2 HUBER #10



W X Y Z Z2 Z A B C D E F G H I J K L M N O P Q R U

- SYMBOLS**
- OUTLINE OF GEOCHRON. ANOMALY - (MO/CU/Zn)
 - QUARTZ-FELDSPAR PORPHYRY (NEED. TO COARSE-GR. LEUCOGRANITE)
 - ALASKITE (NEED. TO FINE-GR. LEUCOGRANITE)
 - HORNFELS; INCL. ALT. ARGILL. & TURFAC. RR.
 - ARGILLACEOUS ROCKS, WITH MINOR TUFF. ETC.
 - FAULTS & JOINTS; INCL. VEIN FRACTURES.
 - QUARTZ AND SILICIFICATION.
 - MINERALIZATION: MOLYBDENITE-CALCOPHYRITE, INCL. ASSOC. PYRITE, PIRARITE, ETC. MO = MOLYBDENITE; CP = CALCOPHYRITE; PI = PIRARITE; SP = SPARSE; TH = TRACE



The reference scale bar has been added to the original image. It will scale at the same rate as the map, therefore it can be used as a reference for the original size.

W. M. SHARP, P.Eng. CONSULTING GEOLOGICAL ENGINEER
808 - 900 W. HASTINGS ST., VANCOUVER 1, B.C.

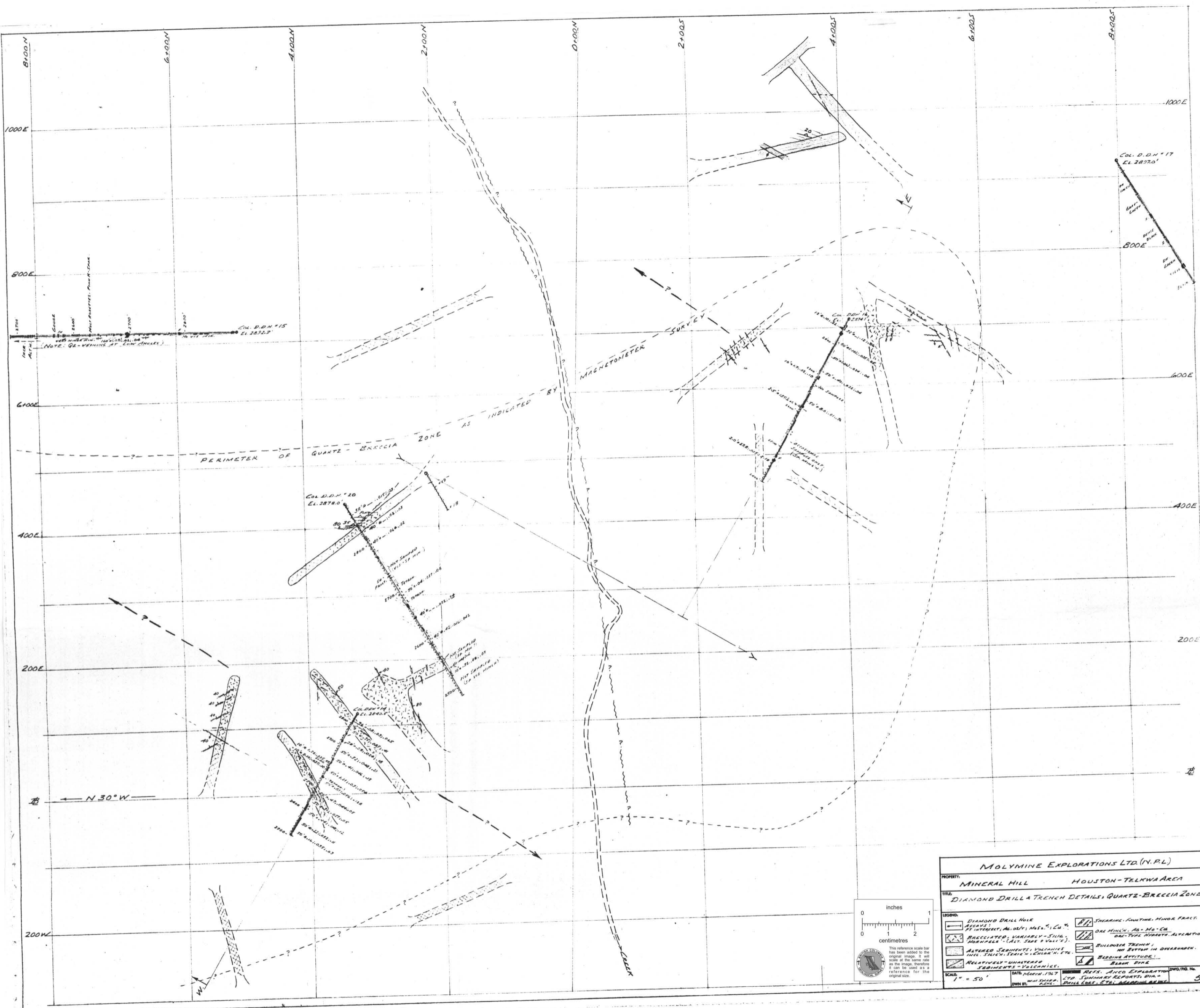
MOLYBDENE EXPLORATIONS LTD. (NRL)

PROPERTY: MINERAL HILL-HUBER MO-CU ZONE

TITLE: GEOLOGY, MINERALIZATION, & GEOCHRON. ANOMALIES. WITH D.D.M. NOS. 1 TO 13.

LEGEND:	D.D.M. #	DIAMOND DRILL HOLE	0.07	DOT # NOS.
		TRENCH / OVERLAP	0.07	0.08 P.M. No.
		OUTCROP, WITH SAMPLE	0.07	SYNCHRONOUS DYKE

SCALE: 1 IN. = 200 FT. DATE: MARCH 1967 REVISION: A ADDITIONS TO V.A. 1967-68 DWG/FIG. No. 1-A



MOLYBDENE EXPLORATIONS LTD. (N.P.L.)

PROPERTY: **MINERAL HILL HOUSTON-TELKWA AREA**

TITLE: **DIAMOND DRILL TRENCH DETAILS, QUARTZ-BRECCIA ZONE**

LEGEND:

DIAMOND DRILL HOLE	SHEAR/FRACTURE, MINOR FRACT.
BRECCIATED, VARIABLY SILICIFIED, IRON-IMPREGNATED (SILT, SAND & GRAVEL)	ORE MINERAL, AS - Mo - Cu
ALTERED SEDIMENTS, VOLCANIC	BULLSEYE TRENCH, NO BOTTOM IN OVERBURDEN
RELATIVELY UNALTERED SEDIMENTS - VOLCANIC	BEDDING ATTITUDE
	BLANK SPACE

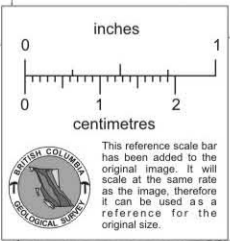
SCALE: 1" = 50'

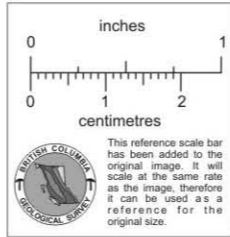
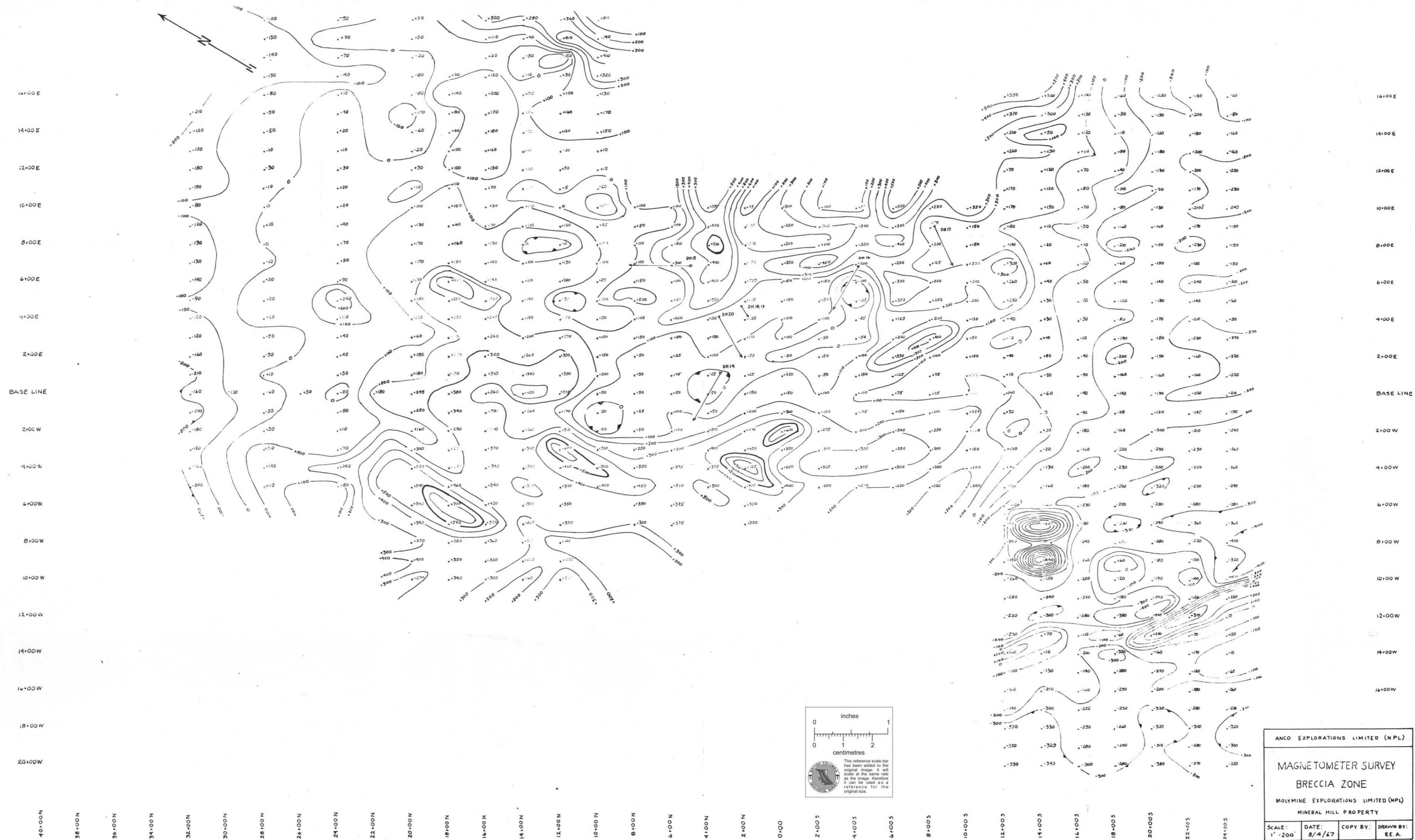
DATE: MARCH 1967

OWN BY: MRS. SHARP

REFS. AND EXPLO. REPTS. DIA. DRILL LOGS, ETC., APPROPRIATE

DWO/PRO No. 5





ANCO EXPLORATIONS LIMITED (NPL)

MAGNETOMETER SURVEY

BRECCIA ZONE

MOLYBDENE EXPLORATIONS LIMITED (NPL)

MINERAL HILL PROPERTY

SCALE: 1" = 200' DATE: 8/4/67 COPY BY: DRAWN BY: RE. A.