

Elevation:

3420'

3380'

3340'

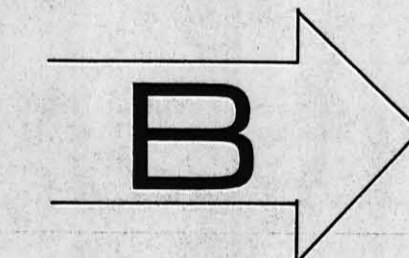
3300'

3260'

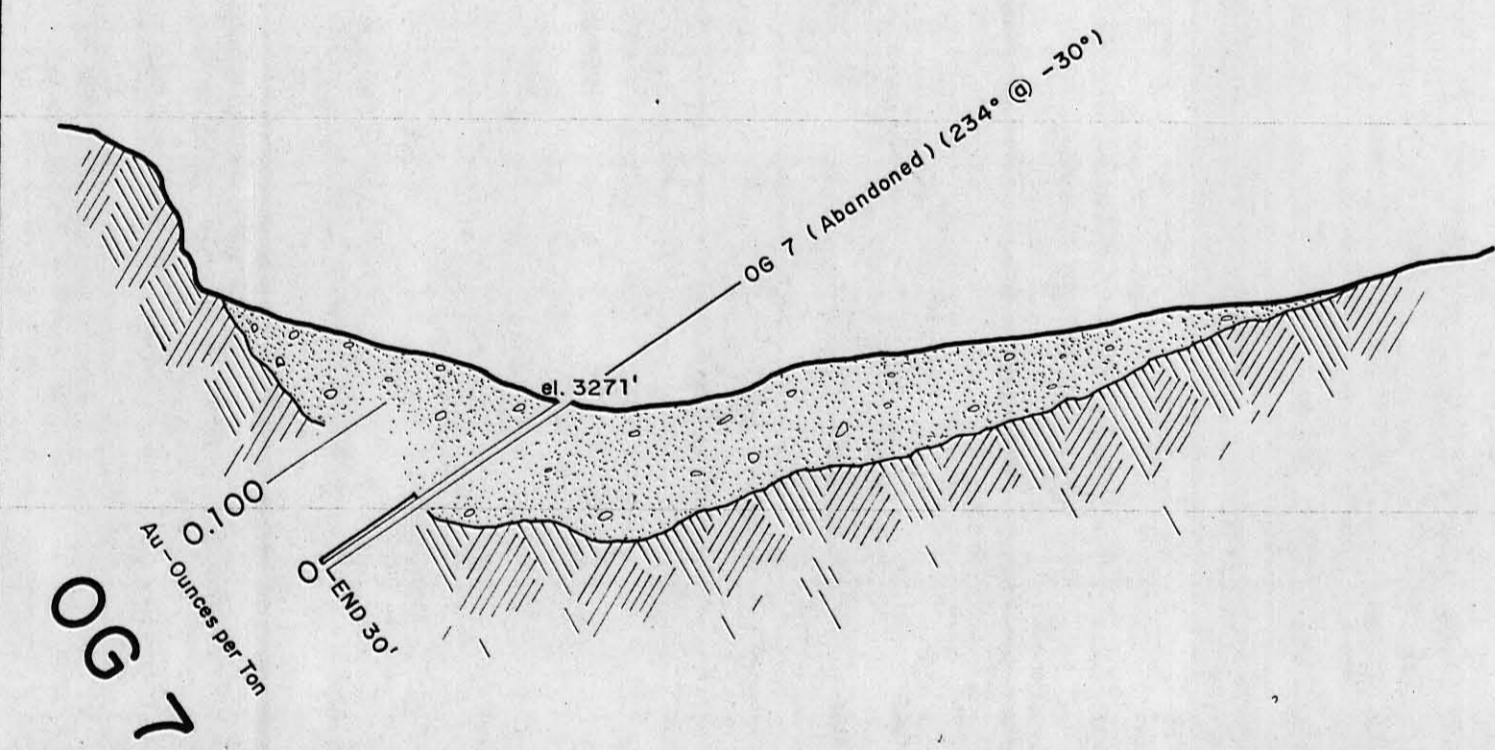
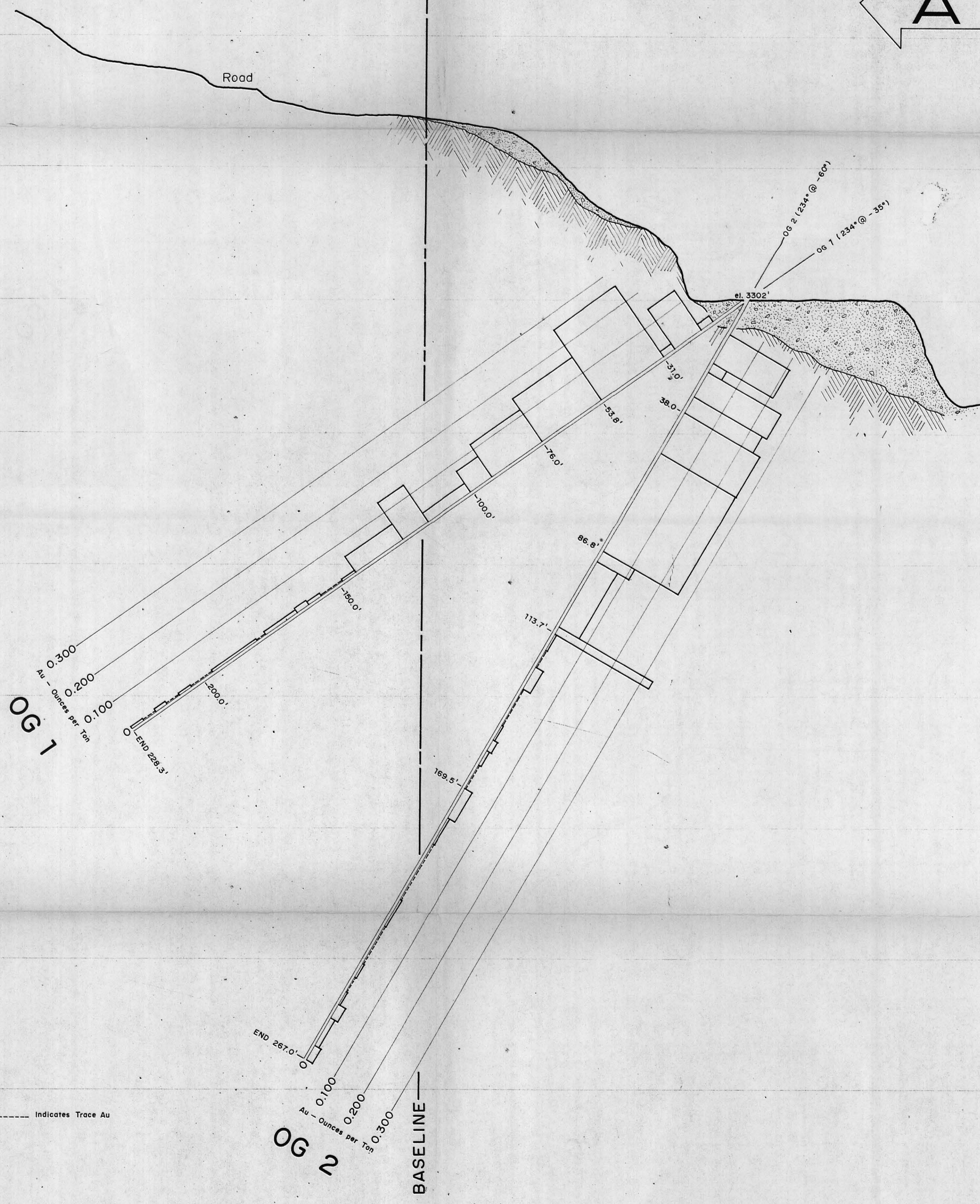
3220'

3180'

3140'



Note: "B" portion of Section is 23 feet North West of "A"

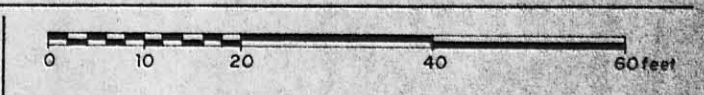


### DIAMOND DRILL HOLE CROSS SECTION

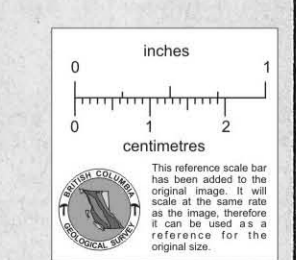
**carolin mines limited**  
Aurum/Idaho/Pipestem Project  
Coquihalla River/Ladner Creek Area  
New Westminster Mining Division, B. C.

SECTION N<sup>o</sup> 2. DDH OG 1, 2 & 7. FACE NORTH WEST  
BAR CHART

Scale: one inch equals twenty feet  
Vertical equals horizontal. Drawn: B.A.C.



Legend: ----- Indicates Trace Au



Checked:

N.T.S. 92 H/11 west half  
To accompany a report by D.R. COCHRANE, P. Eng.  
dated June 21, 1974.

Cochrane Consultants Limited  
4882 Delta Street Delta B.C.

Fig. 16 B

811774