

Oct. 27, 1972

To: Dr. J. G. Simpson

From: M. R. Swanson.

811751

Subject: PROPERTY EXAMINATION: IRISH CLAIMS, TULAMEEN, B.C.

The property examined is called the Irish Claims and is controlled by Seamus Young of Vancouver, B.C. It is made up of the IRA 2, 4, 6, 8 through 25, 38, 40, 42 and the CJH Nos. 1 through 18 totalling 42 full size claims. These claims are approximately ten miles west of Tulameen along Skwum Creek above its junction with Lawless Creek.

The access to the property is excellent as logging is currently being carried out in the area. Old camp frames are present at the junction of Irish Creek and Skwum Creek. These are still usable.

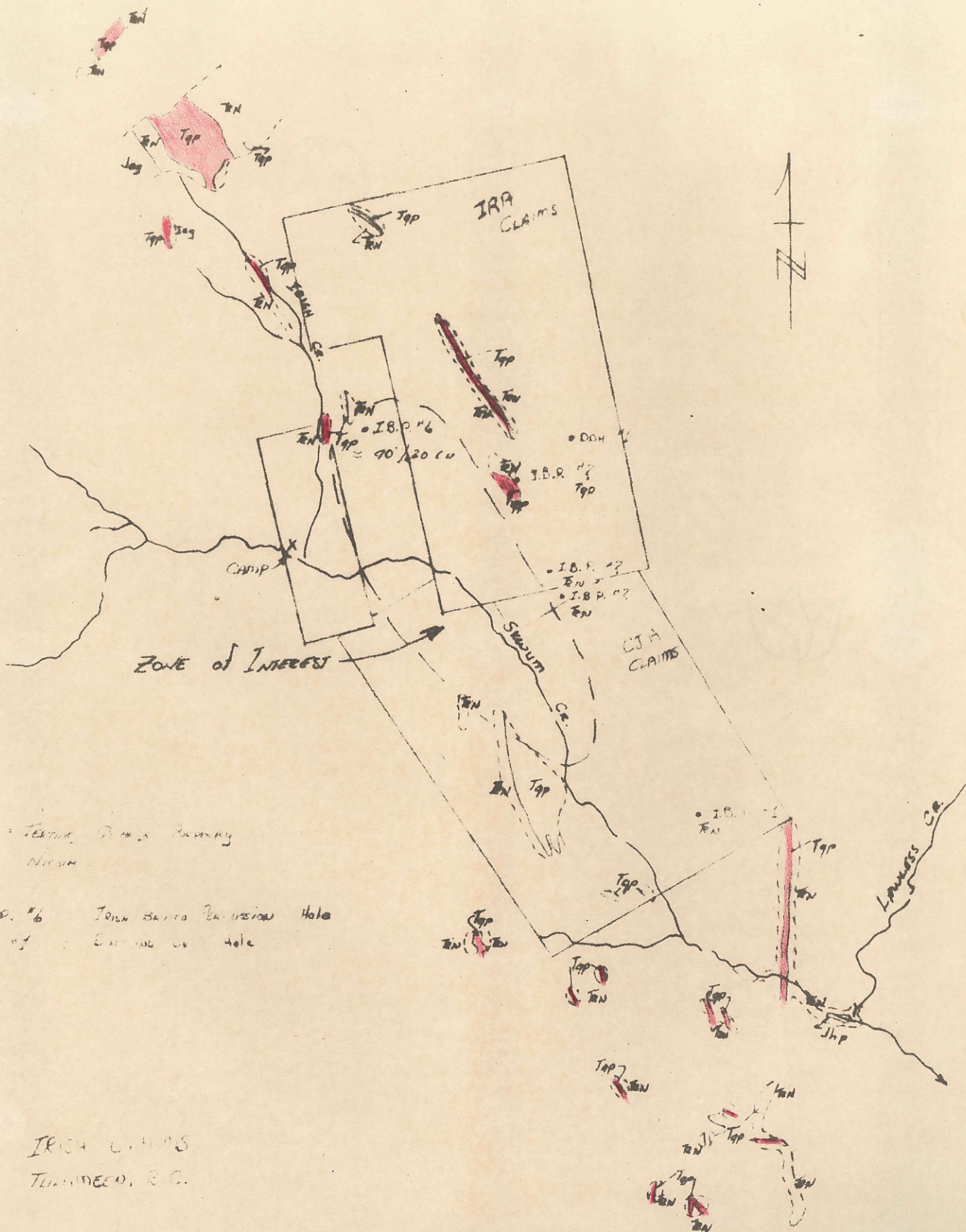
The ground was originally staked by Copper Range Corp. Ltd. The staking was initiated because of stream silt anomaly as well as airborne magnetometer anomaly. Geologic mapping showed a quartz porphyry, presumably early Tertiary, intruding the Triassic Nicola. This intrusive is apparently a dyke type body with small subsidiary dykes striking parallel to it at N40°W. The quartz porphyry is altered with fracture filling and disseminated pyrites as well as minor chalcopyrites throughout. One exposure near hole I.B.P. #6 had a small quartz vein carrying molybdenite. The porphyry is exposed for a couple of miles along strike and a few thousand feet across. Near the contact it is more mafic and in places slightly magnetic.

Copper Range drilled nine percussion holes and one diamond drill hole based primarily on the airborne magnetic anomaly (high). A few of these holes were located <sup>during the examination,</sup> and it is my understanding that most were drilled in the Nicola.

The magnetic high could well be the contact zone between the porphyry dyke and the Nicola.

This property makes a good exploration bet despite the fact that it has been looked at previously. The location is geologically right and much ground is left unexplored that could potentially be a mine. Access is good to any part of the property, water is present in adequate amounts for drilling and the camp is already on a prepared site. These factors make for a low cost drilling project in a part of British Columbia that does contain large tonnages of near ore grade mineralization. It is recommended that five or six 500 to 600 foot holes be put down in the covered, unexplored central portion of the dyke zone. This program of 2,500 to 3,500 feet of BQ drilling should cost approximately \$40,000.





File Properties - Sh is Young

Oct. 27, 1972

To: Dr. J. G. Simpson  
From: M. R. Swanson  
Subject: PROPERTY EXAMINATION; IRISH CLAIMS, TULAMEEN, B.C.

The property examined is called the Irish Claims and is controlled by Seamus Young of Vancouver, B.C. It is made up of the IRA 2, 4, 6, 8 through 25, 38, 40, 42 and the CJH Nos. 1 through 18 totalling 42 full size claims. These claims are approximately ten miles west of Tulameen along Skwum Creek above its junction with Lawless Creek.

The access to the property is excellent as logging is currently being carried out in the area. Old camp frames are present at the junction of Irish Creek and Skwum Creek. These are still usable.

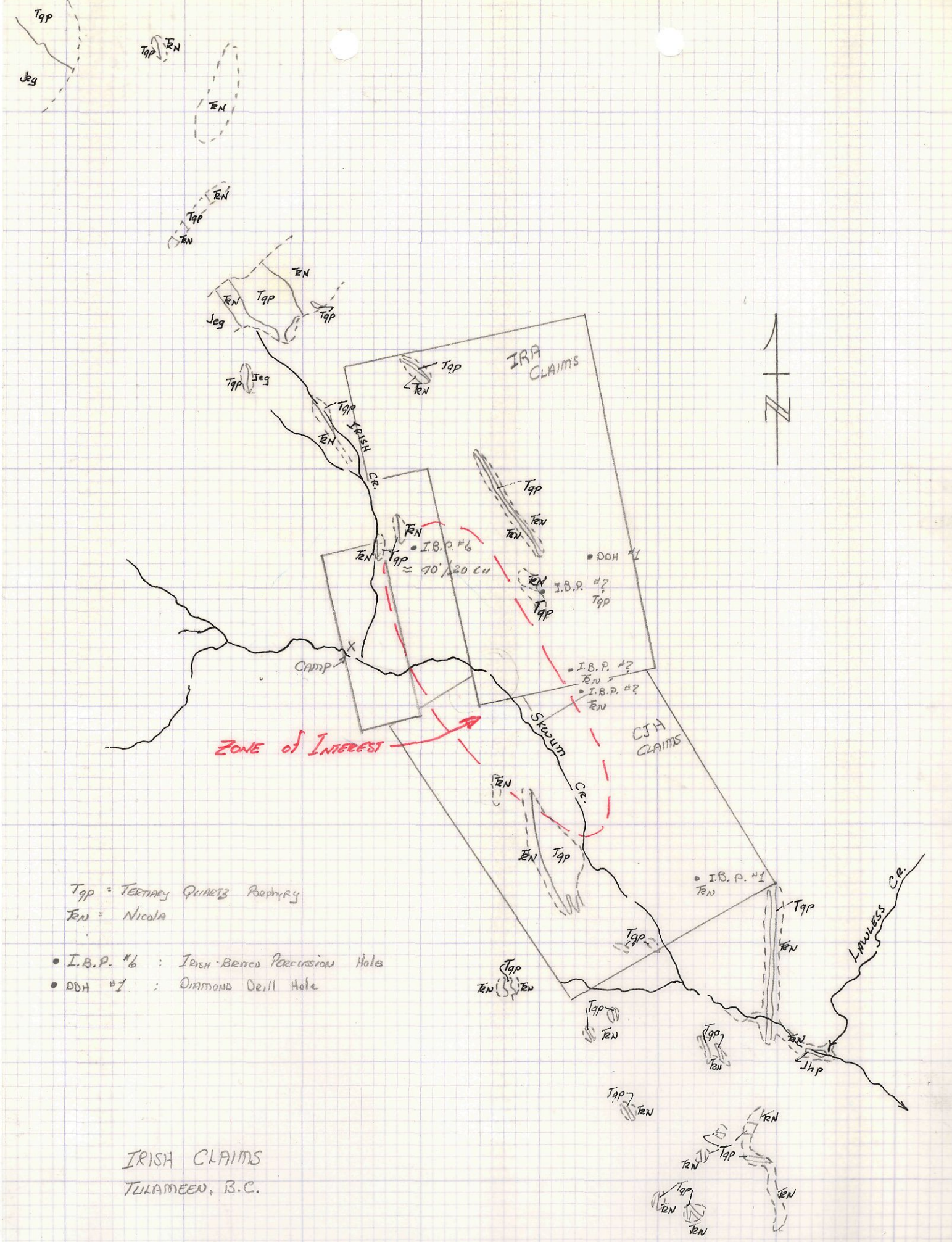
The ground was originally staked by Copper Range Corp. Ltd. The staking was initiated because of stream silt anomaly as well as airborne magnetometer anomaly. Geologic mapping showed a quartz porphyry, presumably early Tertiary, intruding the Triassic Nicola. This intrusive is apparently a dyke type body with small subsidiary dykes striking parallel to it at N40°W. The quartz porphyry is altered with fracture filling and disseminated pyrites as well as minor chalcopyrites throughout. One exposure near hole I.B.P. #6 had a small quartz vein carrying molybdenite. The porphyry is exposed for a couple of miles along strike and a few thousand feet across. Near the contact it is more mafic and in places slightly magnetic.

Copper Range drilled nine percussion holes and one diamond drill hole based primarily on the airborne magnetic anomaly (high). A few of these holes were located <sup>during the examination,</sup> and it is my understanding that most were drilled in ~~the~~ the Nicola.

The magnetic high could well be the contact zone between the porphyry dyke and the Nicola.

This property makes a good exploration bet despite the fact that it has been looked at previously. The location is geologically right and much ground is left unexplored that could potentially be a mine. Access is good to any part of the property, water is present in adequate amounts for drilling and the camp is already on a prepared site. These factors make for a low cost drilling project in a part of British Columbia that does contain large tonnages of near ore grade mineralization. It is recommended that five or six 500 to 600 foot holes be put down in the covered, unexplored central portion of the dyke zone. This program of 2,500 to 3,500 feet of BQ drilling should cost approximately \$40,000.





TQP = TERTIARY QUARTZ PORPHYRY  
 TEN = NICOLA

- I.B.P. #6 : IRISH-BENEDICT PERCUSSION HOLE
- DOH #1 : DIAMOND DRILL HOLE

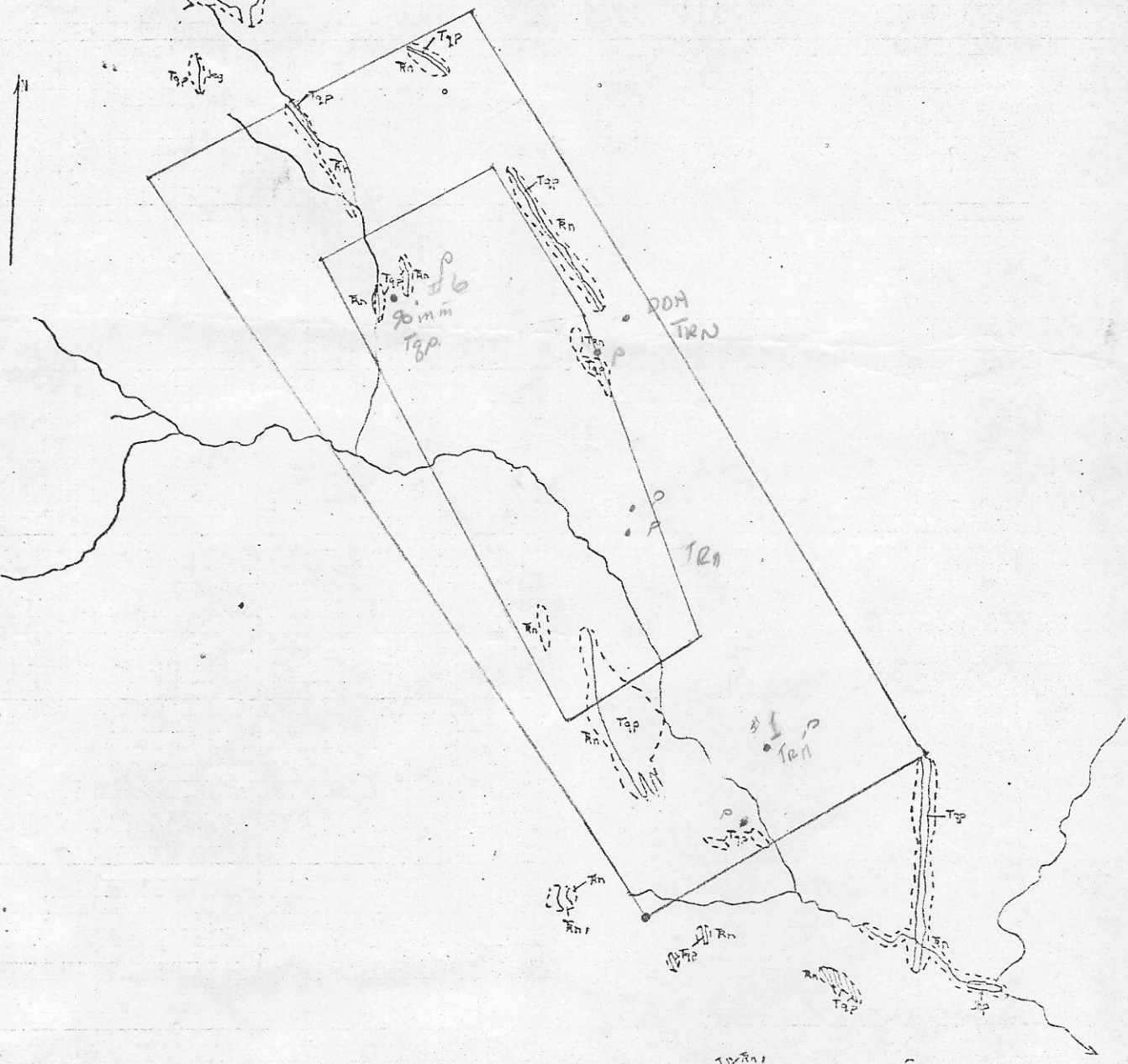
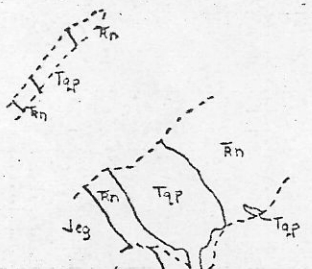
IRISH CLAIMS  
 TULAMEEN, B.C.



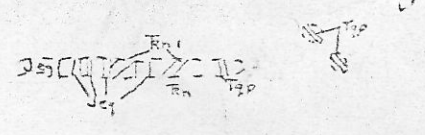




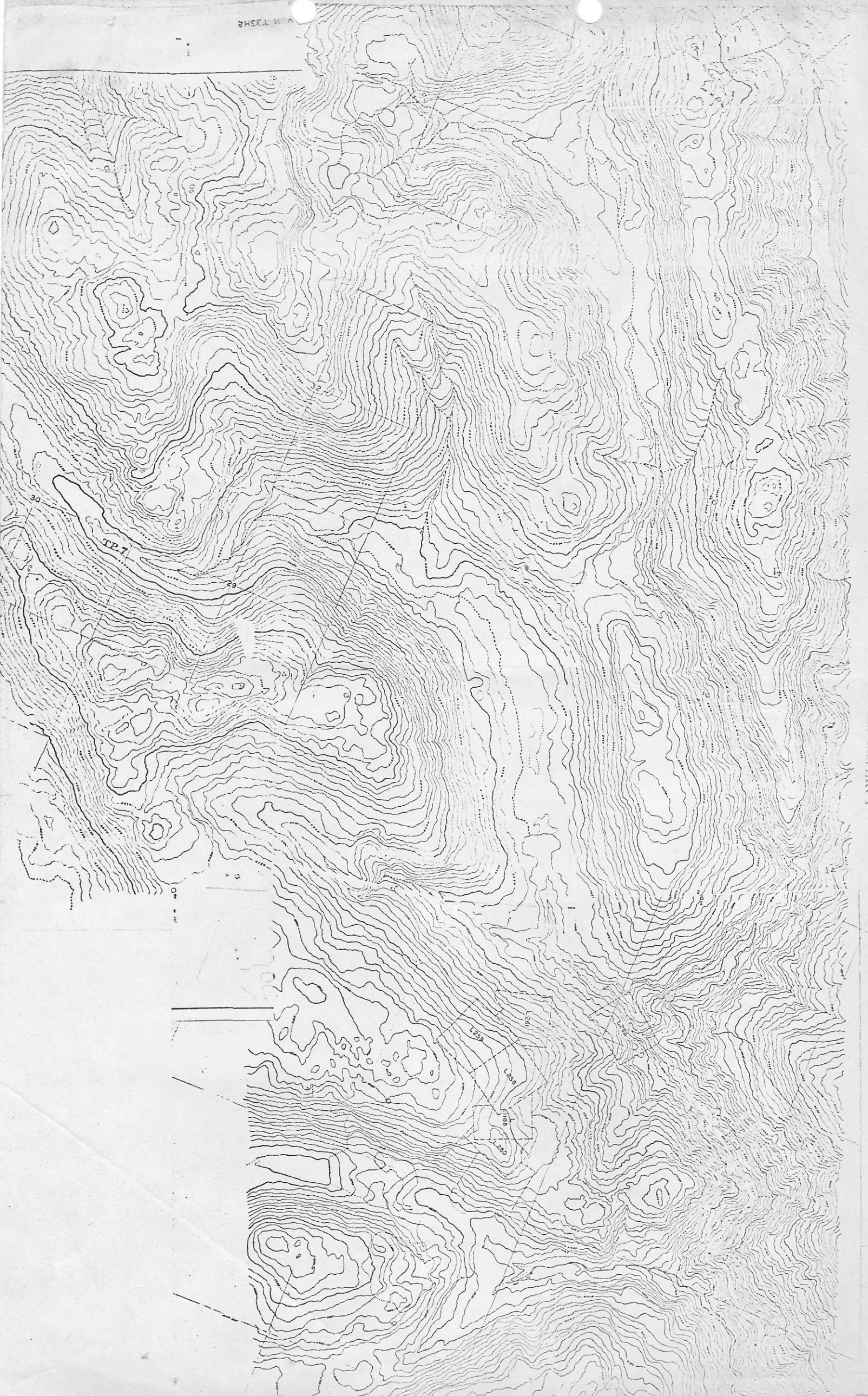
+



+













This map is prepared to serve as a guide only.  
Positions of unsurveyed claims and placer leases  
are plotted from locators' sketches  
and are not guaranteed.  
Letters C.G. indicate claim is Crown-Granted.  
Symbol "C" indicates claim has forfeited.  
**B. C. DEPARTMENT OF MINES AND  
PETROLEUM RESOURCES**