

811726

92 I/7 - Mammit L. 150,000

92H & I  
Malaspina Mining  
Co.  
Jemi-Kay-Gem  
Groups

Nicola geological Suet 886A.

104 hys } Claims  
46 Kay }

174 cls.

Reus & Wind } 24 cls.  
1-20            3-6

Available @ \$100/claim approx.

---

Only showing is in  
touch (by Noranda) on Wind cls. Barite, chlorite, quartz  
in shear zone.

---

Geochem. spring is

# MALASPINA MINING COMPANY LIMITED

(N.P.L.)

470 Granville Street

Vancouver 2, B. C.

Canada

June 14, 1972

Cyprus Exploration Corp. Ltd.,  
#1101 - 510 W. Hastings St.,  
Vancouver 2, B.C.

Dear Sirs:

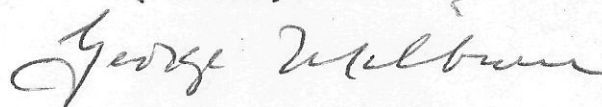
Our company has three mineral properties for sale:

1. Jemi Group, 43 claims, 11 miles east of Ashcroft, Kamloops Mining Division, covering approximately one mile of contact between a tongue of the Guichon Batholith and Kamloops volcanics.
2. Kay Group, 46 claims, 7½ miles north of Upper Nicola, Nicola Mining Division, covering over 1½ miles of contact between the Central Nicola Batholith and Nicola volcanics and sediments of Upper Triassic age.
3. Gem Group, 47 claims, 5½ miles east of Nelway adjoining the U.S. border, Nelson Mining Division, underlain by the Josephine horizon of the Metaline formation, host for the important mines at Metaline Falls, Wash., and the Emerald Limestone member of the Laib formation, host for the Reeves McDonald and Jersey mines.

Data is enclosed covering #1 and #2 properties. The report of A.R. Bullis, P. Eng., and a copy of an option agreement covering the #3 property is available to those interested in discussing the purchase of that property.

Yours very truly,

MALASPINA MINING COMPANY LIMITED  
(N.P.L.)



George Milburn, president



# MALASPINA MINING COMPANY LIMITED

(N.P.L.)

470 Granville Street

Vancouver 2, B. C.

Canada

## 43 Mineral Claims - Kamloops Mining Division

LOCATION: 11 miles east of Ashcroft  
2 " northwest of Mt. Fehr  
13 " north of Bethlehem Copper

GEOLOGY: According to the Ashcroft geological map 1010 A, this claim group covers approximately one mile of contact between intrusive rocks of the Guichon Batholith and Kamloops volcanics. The Guichon Batholith is the host rock for the copper deposits of the Highland Valley mines, Bethlehem, Lornex etc.

GENERAL: Provincial claim maps indicate that the entire Guichon Batholith is staked at this time.

MALASPINA MINING COMPANY LIMITED



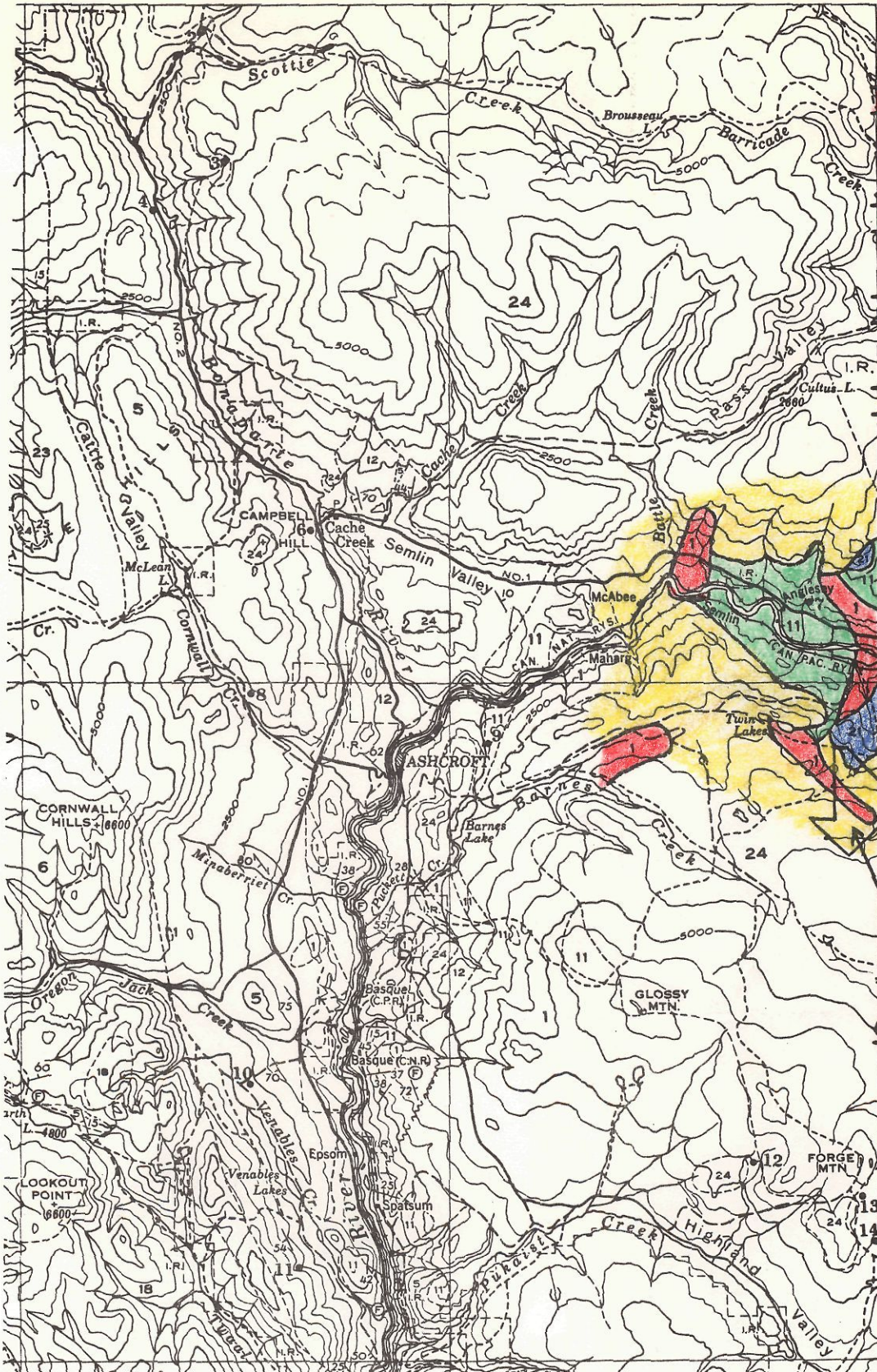
George Milburn, President

30'

15'

121°00'

51°00'



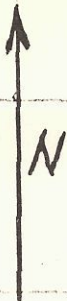
- 1** Guichon Creek Batholith
- 11** Nicola Volcanics
- 21** Cretaceous Sediments
- 24** Kamloops Group Volcanics

**JEMI CLAIMS**

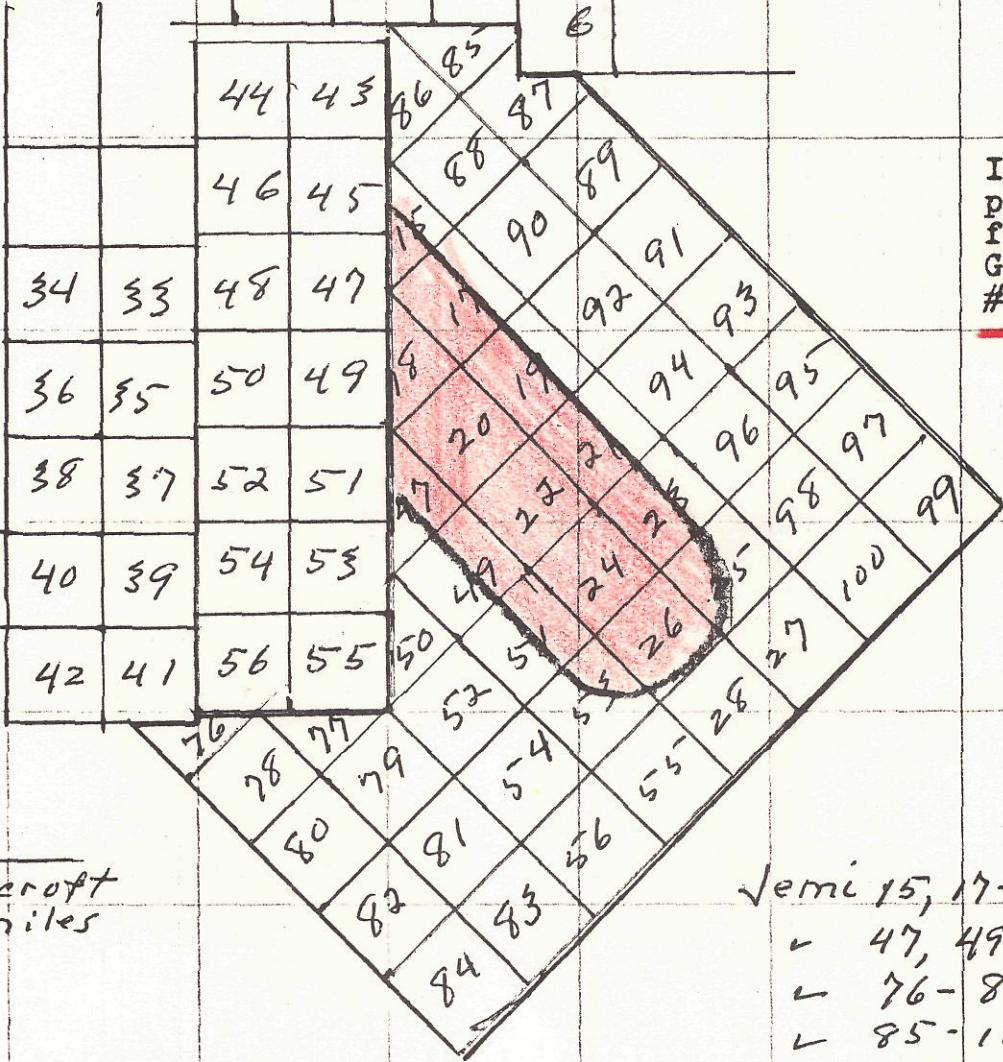
30'

886A, "Nicola"

MALASPINA MINING CO. LTD.  
 (N.P.L.)  
 470 GRANVILLE ST.  
 VANCOUVER 115, B. C.  
 CANADA



17	19	21	
	Hasso		5
18	20	22	Star
			6



Intrusive  
 plotted to scale  
 from Ashcroft  
 Geological Map  
 # 1010 A

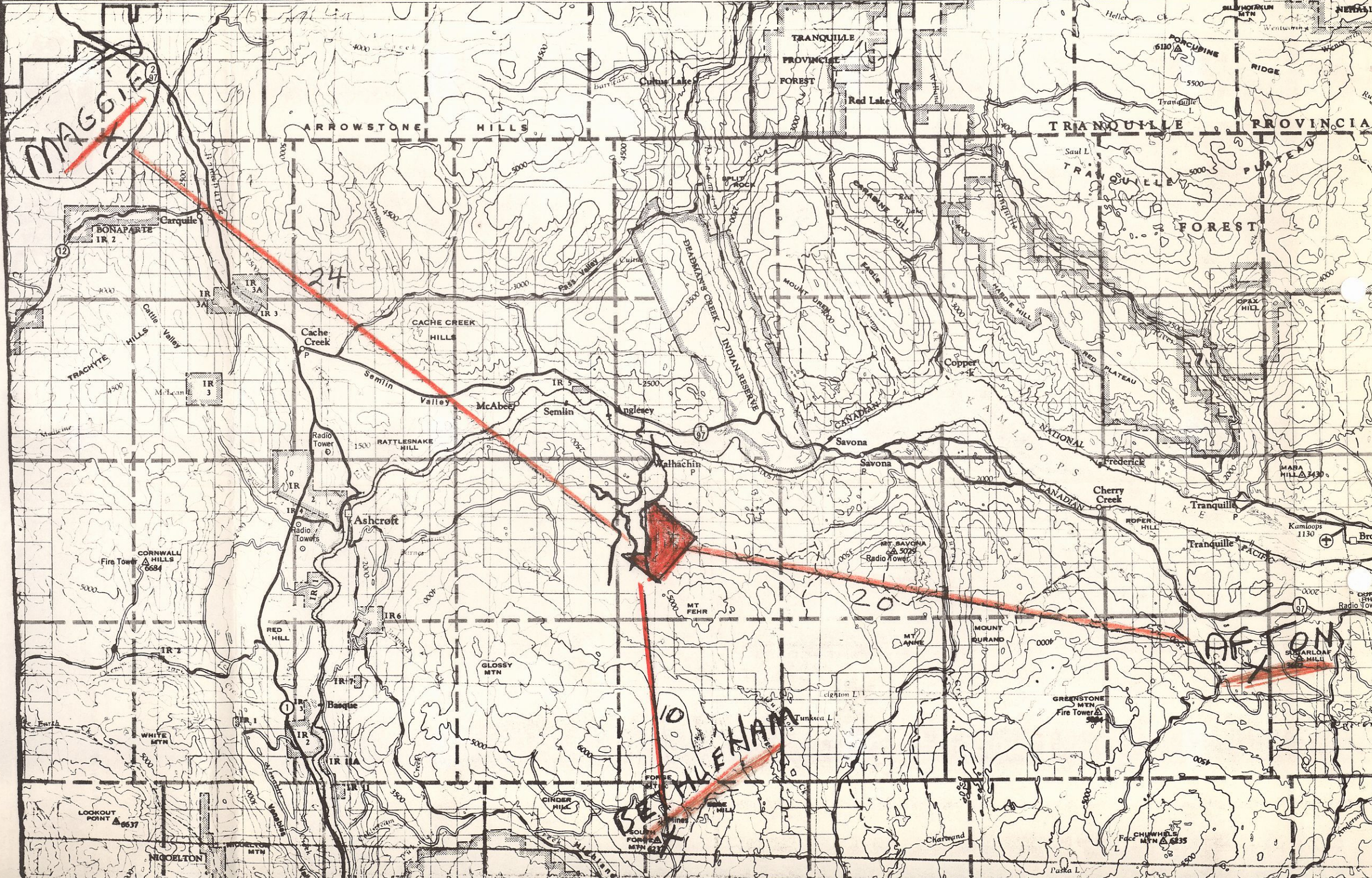
Timmy

← Ashcroft  
 11 miles

Verni 15, 17-28  
 ↳ 47, 49-56  
 ↳ 76-84  
 ↳ 85-100

↓ Bethlehem  
 Copper  
 13 miles

↘ Mt. Fehr  
 2 miles



**MAGGIE**

24

20

**AF**

**SEKLENNAN**

ARROWSTONE HILLS

TRANQUILLE PROVINCIA

TRANQUILLE FOREST

BONAPARTE IR 2

IR 3A

IR 3

Cache Creek

CACHE CREEK HILLS

McAbee

Semlin

Waltham

Savona

MT SAVONA Radio Tower

Cherry Creek

Tranquille

Tranquille

MARA HILL

Kamloops 1130

CORNWALL HILLS Fire Tower 6694

IR 2

IR 6

IR 7

IR 1

IR 2

IR 3

IR 4

IR 5

IR 6

IR 7

GREENSTONE MEN Fire Tower 5844

CHUMWEL'S Fire Tower 5835

NICOELTON

WHEATLAND MTN

SOUTH FORK MTN 6637

Chartwand

Paska L.

# MALASPINA MINING COMPANY LIMITED

(N.P.L.)

470 Granville Street

Vancouver 2, B. C.

Canada

August 18, 1972

## KAY & LYN GROUP - 150 claims - NICOLA M.D.

This group, approximately 5 miles north of Upper Nicola, covers an area from the east side of Clapper-ton Creek to a point west of Revelle Lake, south of Swakum Mt. A short distance to the northwest two com-panies are currently drilling a porphyry copper pros-pect and a lead-zinc property on which a substantial tonnage of ore has been outlined. On Swakum Mt., im-mediately to the north, over 350,000 tons of copper-tngsten ore was proven by diamond drilling in the early 60's.

We have completed a reconnaissance geochemical survey which has outlined copper and lead-zinc anom-alies. If you are interested in examining this data with a view to acquiring a major position in the property please contact us.

Yours very truly,

MALASPINA MINING COMPANY LIMITED  
(N.P.L.)

*George Milburn*

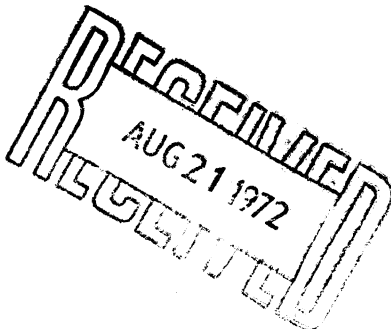
George Milburn, President

P.S. Tel: 683-5685 If you telephone and I am not  
in please talk to Fritz Orth

*G.M.*

*Asarco @ Reyh.*

*@ Talman Co.*



# MALASPINA MINING COMPANY LIMITED

(N.P.L.)

470 Granville Street

Vancouver 2, B. C.

Canada

May 29, 1972

## MINERAL CLAIMS KAY #1-28, 31-48, Nicola M.D.

The Kay group of mineral claims is situated on Clapperton Creek approximately 7½ miles NNE of Upper Nicola and 2½ miles ESE of Swakum Mt. Part of the group was formerly held by Noranda Mineral Explorations Ltd. as the Coke group.

The westerly part of the claim group is underlain by Nicola volcanics and the easterly part by intrusive rocks. The contact runs approximately ½ mile west of the easterly boundary of the claim group in a north-south line. Some ultrabasic rocks were observed in the area of M.C. Kay 37-40 where some bulldozer trenching had been done. Rocks west of the contact are altered and show some sulphides, mainly pyrite.

Government aeromagnetic maps show a high anomaly of 3,120 gammas centered near the initial post of M.C. Kay #1, another relative high of 2,820 gammas on the northern part of MC Kay #8 and a low of 2,380 gammas roughly covering M.C. Kay #13 and 15. Such dipoles have been found to be associated with commercial copper deposits in the Highland Valley and at the recent discovery on the Afton property near Kamloops.

On Swakum Mt. Torwest Resources Ltd. outlined approximately 350,000 tons of copper tungsten ore by drilling in the early 1960's but values at that time were not considered commercial. Higher metal prices have raised values to probable commercial levels if reserves can be increased by further drilling, according to Sherwin F. Kelly, P. Eng., geologist for Gomara Resources Ltd., now exploring the Swakum Mt. deposits. A magnetic high of 3,700 gammas on the NW flank of Swakum Mt. indicates a possible association of ultrabasic rocks and/or magnetite with that deposit. Magnetic conditions on the Kay group, as shown on the aeromagnetic map, indicate a similar situation.

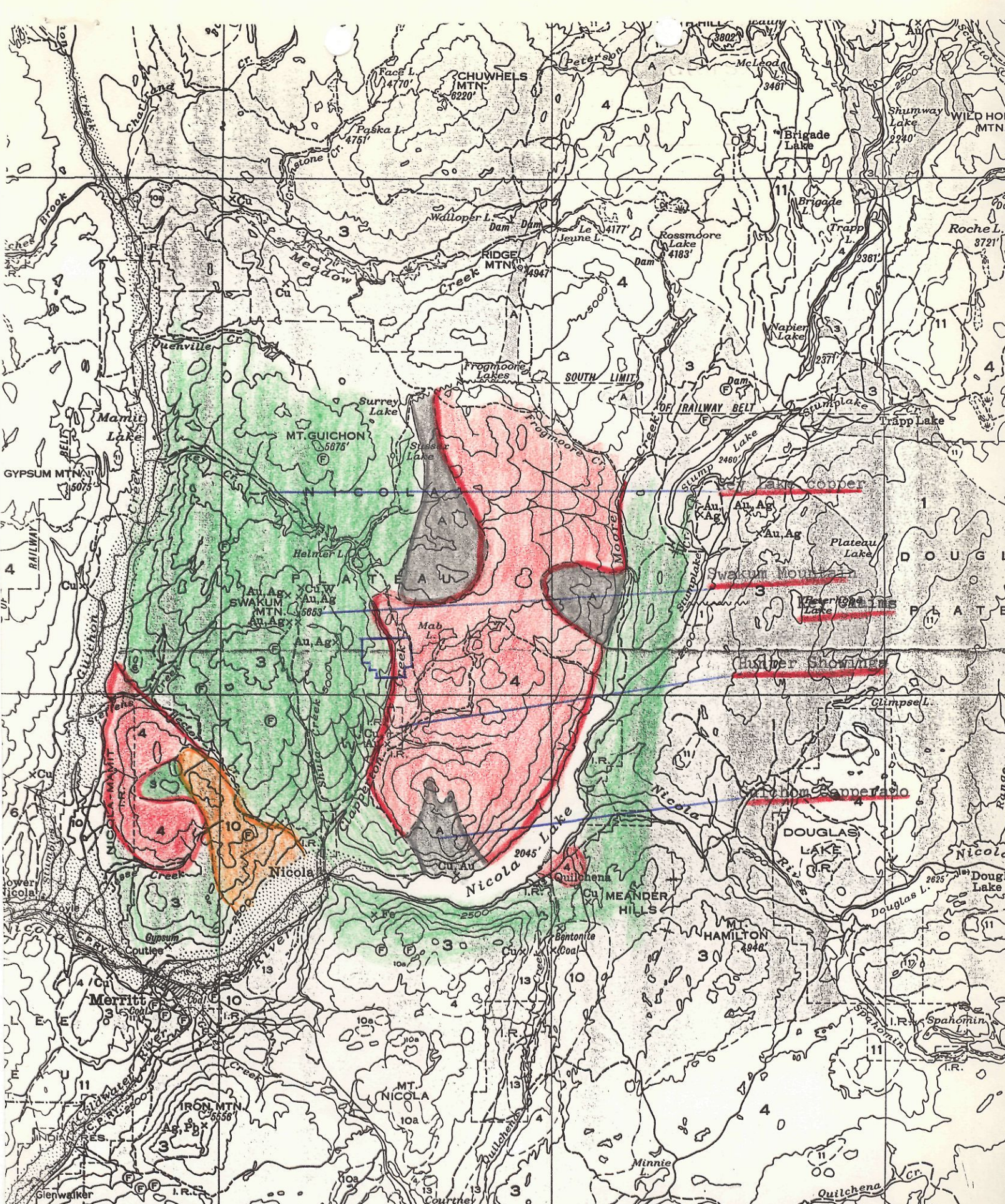
Some 6 miles south of the Kay group high grade copper ore was shipped to smelters from the 400 ft. shaft of the old Guichon Copperado mine many years ago.

MALASPINA MINING COMPANY LIMITED  
N.P.L.



Fritz Orth





47. REPRINTED, 1971

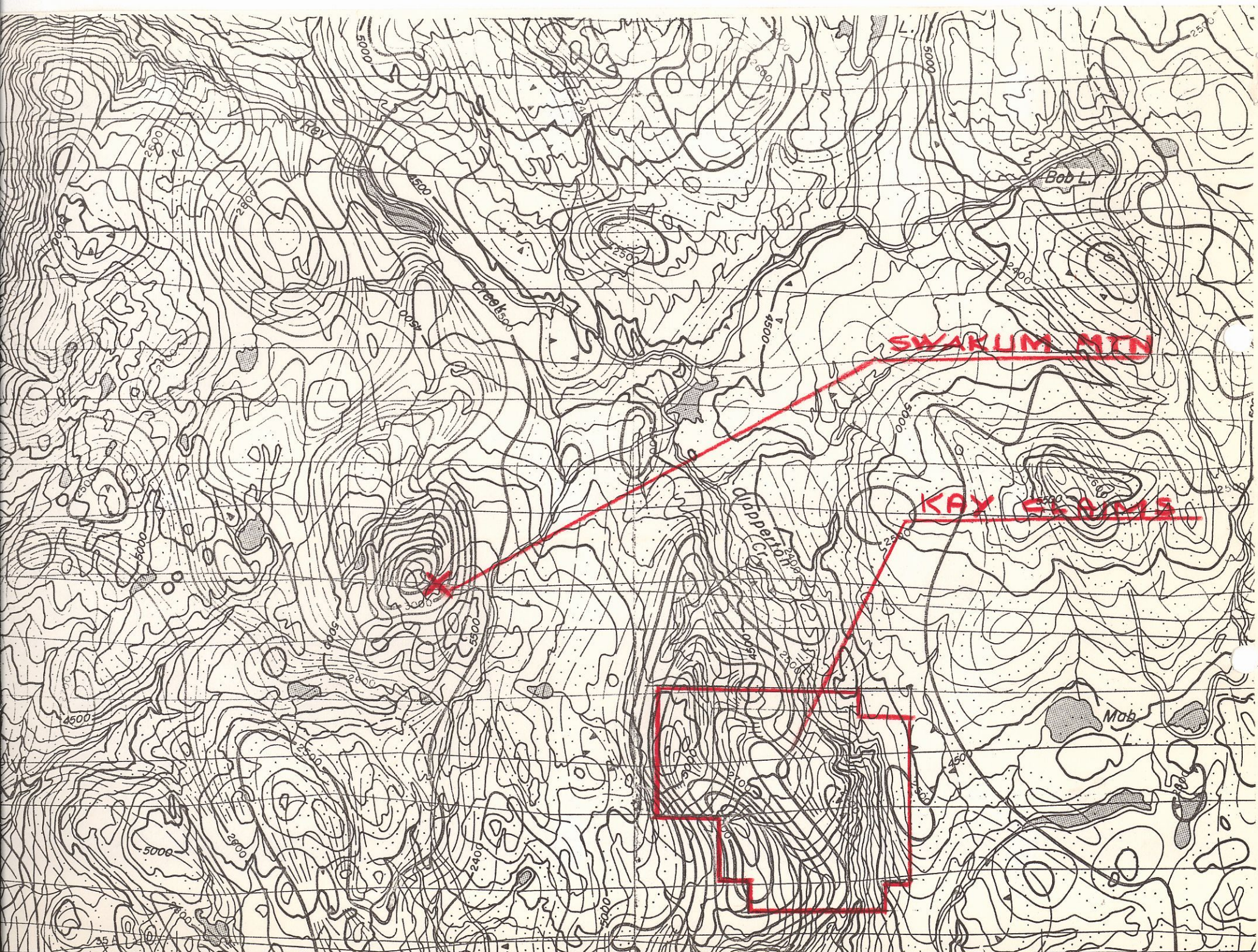
may be obtained from the  
of Canada, Ottawa

- 1 Pre - Palaeozoic
- 2 Nicola Volcanics
- 3 Coast Intrusives
- 4 Colswater Bas.

Joins Map 888A, "Princeton."

MAP 886A

# NICOLA



# MALASPINA MINING COMPANY LIMITED

(N.P.L.)

470 Granville Street

Vancouver 2, B. C.

Canada

683-5686

## Notes and Comments on Geochemical Reconnaissance Kay & Lyn Claims, Nicola M.D.

### Procedure:

For reconnaissance purposes, sampling was concentrated on drainage. The sampling pattern therefore is governed by the drainage pattern. Samples were taken and marked as follows:

- Silts: D- active, dry, clay, organic according to conditions and composition.
- Gullies: G- where topography and/or vegetation suggest underground drainage, but no evidence of surface run-off exists. These gullies have largely a fully developed soil profile, of which the Bf horizon was sampled.
- Rocks: R- chips taken from outcrops encountered during traverses.
- Soils: S- taken only in a small area W of Kirby Creek in order to narrow the sample spacing. All Bf horizon.

Samples were processed by Crest Laboratories (B.C.) Ltd. by digesting the -80 fraction of the sample in  $\text{HClO}_4 + \text{HNO}_3$  and

analyzing through Atomic Absorption for Cu, Zn, and Pb.

Results were plotted in three categories: background, "moderately high" and "anomalous". Ppm-values for these categories were derived by grouping the samples in 10, 20, and 30 ppm intervalls, and plotting the numbers of samples in each group against the ppm-intervalls.

For Cu, these curves peak at 40 -60 ppm, dropping off sharply to 90 ppm, attaining a small secondary peak at 100 ppm. The curves reverse curvature and begin to flatten out at appx.

~~100~~ 75 ppm. The arithmetic mean of samples with less than 100 ppm is 53 ppm. Background therefore has been tentatively set at 50 ppm, with more than 100 ppm to be considered "anomalous", and 75 - 100 ppm "moderately high".

Pb and Zn values are rather low and uniform, and are considered significant only as supplementary information. ( On Swakum Mtn. are several occurrences of Cu-Zn association.)

### Topography and general Geology:

Surface rocks W of Clapperton Creek are of the Nicola Group, on and E of Clapperton Creek Coast Intrusives, the contact running N-S appx. 500 feet W of Clapperton Creek (according to GSC Map #886A ). Bedding of Nicola rocks strikes S-SE, dipping gently W.

Overburden is shallow, and there is abundant outcrop at elevations above 4800', except on M.C.'s Lyn # 11-16, and Kay # 17-26, where glacial overburden reaches depths of over 20'. Ice movement in the area, as evidenced by glacial striae on Swakum Mtn., has been S to SE.

Main drainages of the area are Shuta, Kirby, and Clapperton Creeks, all Three running southerly in deeply cut valleys with steep sides. smaller drainages almost uniformly follow depressions between "sawtooth" edges formed by the erosion of the slightly tilted Nicola beds, running either S-SE or N-NW. All drainages run through small swamps or bogs at intervals of 500 - 1500', which may have somewhat obscured the geochemical picture.

Observations:

In the immediate vicinity (Swakum Mtn., Clapperton Cr.) known mineral occurrences are associations of Cu, Pb, Zn, W with values in Au, Ag. All of of them are in Quartz veins, Quartz blowouts, or in stockworks of Quartz veinlets. GSC reports point out the similarity between the Swakum Mtn. showings and the mineral deposits on Mineral Hill, SE of Stump Lk. Occurrences of Quartz and Zones of silicification are therefore to be considered significant in exploration for commercial ore deposits.

Earlier this summer, Asarco was drilling some Cu showings at Rey Lake, reputed to be Cu disseminations in altered Nicola Volcanics.

Since work on the property has hardly progressed beyond the geochemical reconnaissance phase, only the following features have been noted:

A zone of silicification in the area of M.C. Lyn # 2,4,21,32. Rocks, mainly Volcanics, are shattered and altered, intersected by irregular stringers of Quartz, with rust- and Mn- stain. Some sulphides were observed, mainly Pyrite. There are some old trenches. A bod of porphyritic material outcrops directly to the N and NW. Drainages from the area are anomalous in Cu. A weak magnetic dipole with a differential of 180 gammas straddles the zone (GSC Aeromagnetic Series # 5212 G).

A silicified zone directly W and NW of Hensell Lake. Some alteration, and drainages from the divide running E- W between location lines Lyn # 33 - 40 and Lyn # 44 - 50 register anomalous values in Cu in both drainage directions.

An area of particular Interest is a 1/2 mile wide strip parallel to and directly W of Kirby Creek. Three strong fault or shear zones have been identified: (1) striking southerly 2,000' W of Kirby Creek on Lyn # 53, (2) striking easterly on the N-edge of Lyn # 56, 58, (3) striking westerly near #2-post of Lyn # 54, 55, on the E bank of Kirby Creek. The latter (3) has been exposed by bulldozer trenching. This shear is more than 20' wide, the gauge material silicified, carrying some bornite and chalcocite with malachite and azurite staining. The footwall (S) consists of shattered Mn-stained, highly altered rock intersected by a stockwork of quartz-veinlets showing some Cu-sulphides. The hanging wall (N) is strongly foliated. Streams draining E-SE into Kirby Creek are consistently anomalous in Cu with moderately high Zn-values.

GSC Memoir # 249 mentions some Au, Ag workings in the area of M.C.'s Lyn # 53,55,76, and Reno # 17 (according to GSC Map # 887A, item 61: A group). The GSC publication gives no further information about these workings, and they have as yet not been re-located by the writer, however their location, as plotted on GSC Map 887A, coincides with a magnetic "low" on Aeromagnetic Series Map # 5212G.

*Prospect dr.*

# MALASPINA MINING COMPANY LIMITED

(N.P.L.)

402 West Pender Street

Vancouver 3, B. C.

Canada

Jan. 22, 1968

Dear Sirs:

Due to concentration of our exploration work in areas where the following equipment cannot be used we offer for sale:

- 1 Atlas Copco compressor, Model HR4V, Serial #97453 driven by diesel engine HR4-k11580. Unit is on 4 wheel trailer with towing arm. Extra wheel and tire. Good condition. Located Kamloops. Price: \$2,500.00
- 1 GMC 6x6 truck, 5 ton, gross weight 11,360 lbs. Factory rebuilt 6 cylinder 270 cu. in. engine with less than 100 miles service. This unit has heavy steel insulated body with 7 ft. headroom. Good condition. Located Kamloops. Price: \$2,500.00
- 1 Camp tender, 40 ft., diesel powered. Heavy fir hull. Radiotelephone, depth sounder, oil stove, 4 bunks, completely equipped. Located Vancouver. Price: \$9,500.00
- 2 Rock drills, Atlas Copco RH-656-4W with air legs. Located Kamloops. Price: \$575.00 each.

If interested please call our office or write to above adress. Office telephone is 683-0116.

Yours very truly,

MALASPINA MINING COMPANY LIMITED  
(N.P.L.)

*George Milburn*

George Milburn, President

