

# LEGEND

## TERTIARY:

KAMLOOPS GROUP -  
ANDESITES, BASALTS  
TRACHYBASIC BLS

## JURASSIC & LATER (?)

IRON MASK BATHOLITH -  
MICRODIOKITE, MICROMONZONITE  
GABBRO, DIORITE, PYROXENITE, MAMMOGUSITE, SYENITE

## POST TRIASSIC:

PELTITES - BRINT & CORRELITES

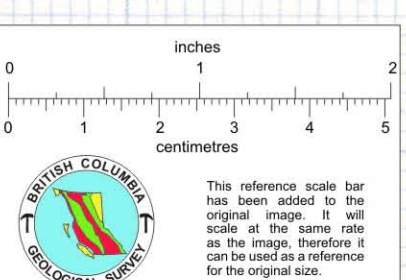
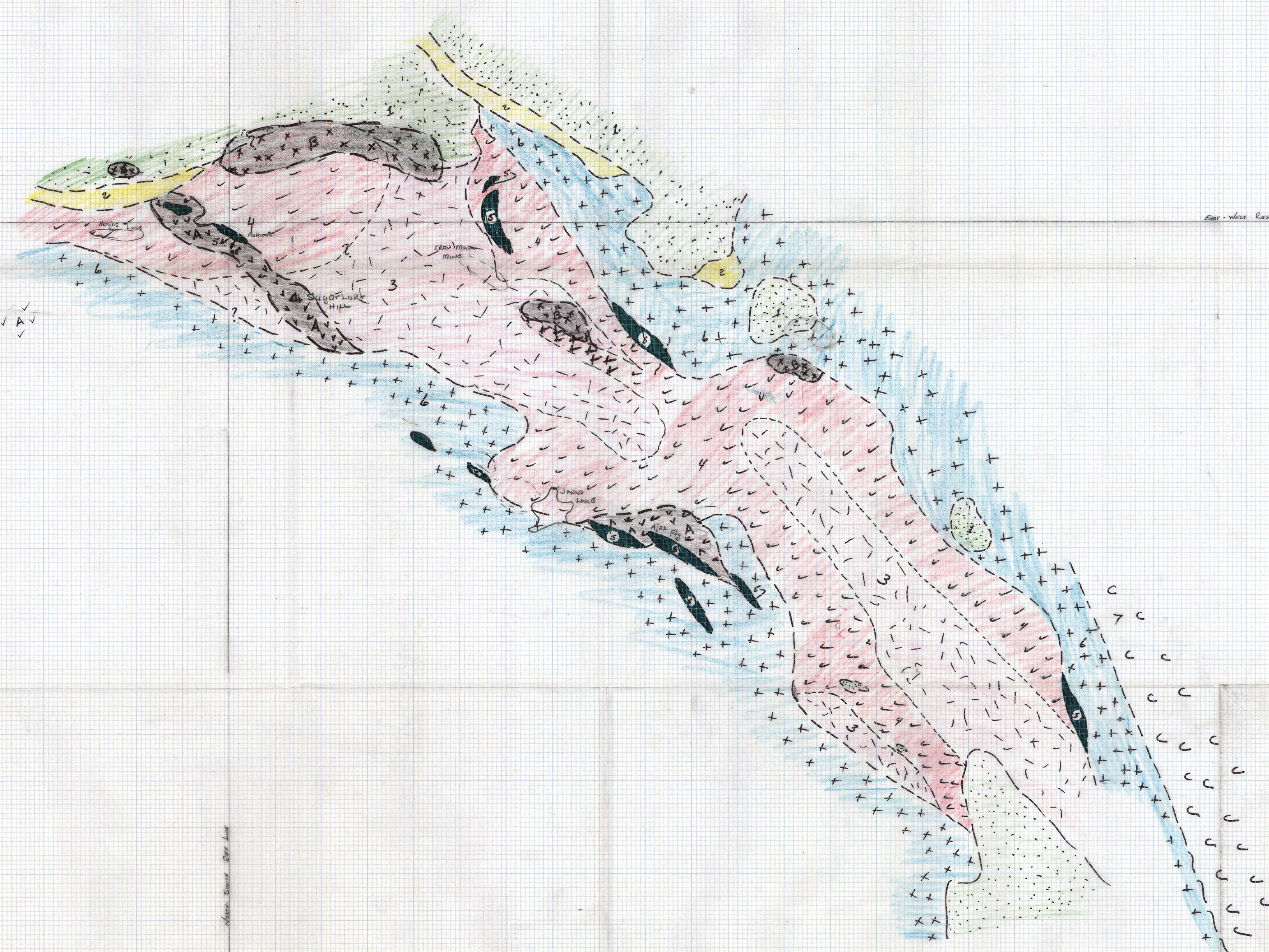
## TRIASSIC:

NICOLA GROUP -  
ANDESITE & BASALT INTRA, Tuff, AGGLOMERATE

## CARBONIFEROUS & PERMIAN:

CACHE CREEK GROUP -  
ANDESITE & PYROXENITE, GRANITE

--- GEOLOGIC CONTACT



IRON MASK BATHOLITH GEOLOGY  
DERIVED FROM MAPS BY P. W. HARRIS, ANNUAL REPORT 1954

SCALE: 1 IN. = 5000 FT.