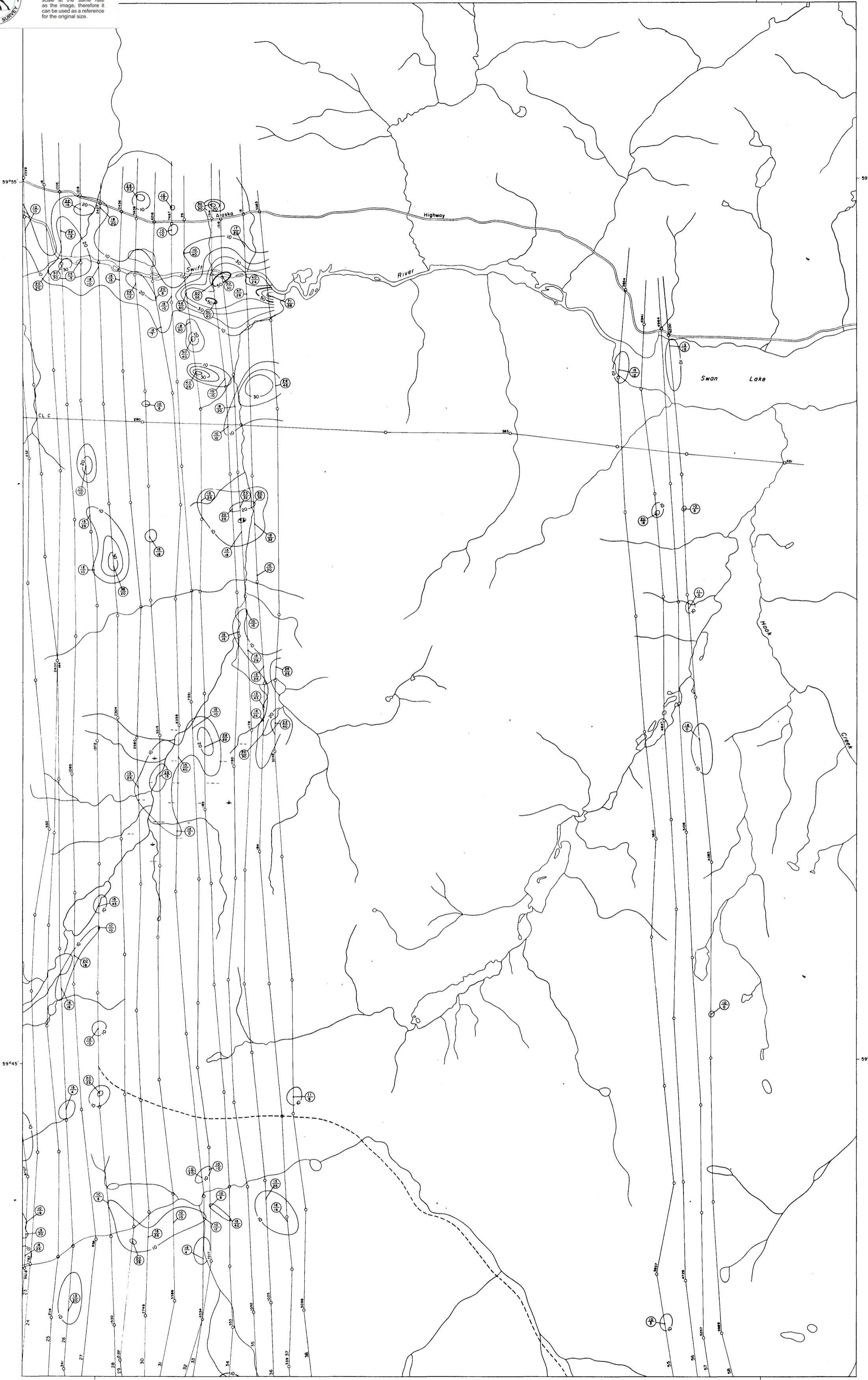


This reference scale bar has been added to the original image. It will scale at the same rate as the image, therefore it can be used as a reference for the original size.

# CYPRUS EXPLORATION CORPORATION LIMITED

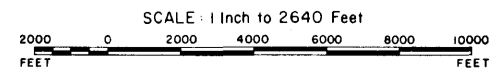
## AIRBORNE GEOPHYSICAL SURVEY

131°25'

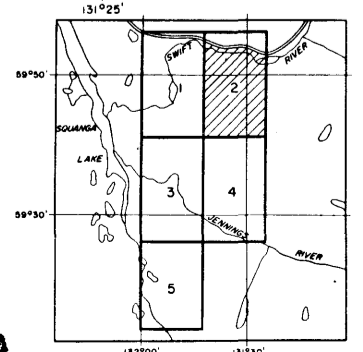


MEAN FLIGHT LINE SPACING ..... 1320 FEET  
 MEAN TERRAIN CLEARANCE ..... 250 FEET  
 FIDUCIAL POINTS ..... 0 3680  
 FLIGHT LINES .....  
 ELECTROMAGNETIC CONTOURS 0, 50, 100, etc .....  
 10, 20, 30, etc .....  
 THE CONTOURS REPRESENT THE ELECTROMAGNETIC RESPONSE OF THE IN PHASE COMPONENT OF THE SECONDARY FIELD IN UNITS OF 10 PARTS PER MILLION  
 (20) REPRESENTS IN PHASE COMPONENT OF SECONDARY FIELD  
 (20) REPRESENTS OUT OF PHASE COMPONENT

### ELECTROMAGNETIC MAP JENNINGS RIVER AREA BRITISH COLUMBIA



SCALE: 1 inch to 2640 Feet  
 Flown and Compiled by  
 LOCKWOOD SURVEY CORPORATION LIMITED  
 TORONTO, CANADA  
 1970



811300